

HOLES:
A-.116 DIA. (81 REQ.)
B-.189 DIA. (2 REQ.)

MATERIAL:
3/32 THICK G11 EPOXY

A4481-1
MACHINING

MARK TMC P/N
1/8 HIGH GOTHIC
W/LATEST REV.
LETTER.
(A4481 -)
ON REAR

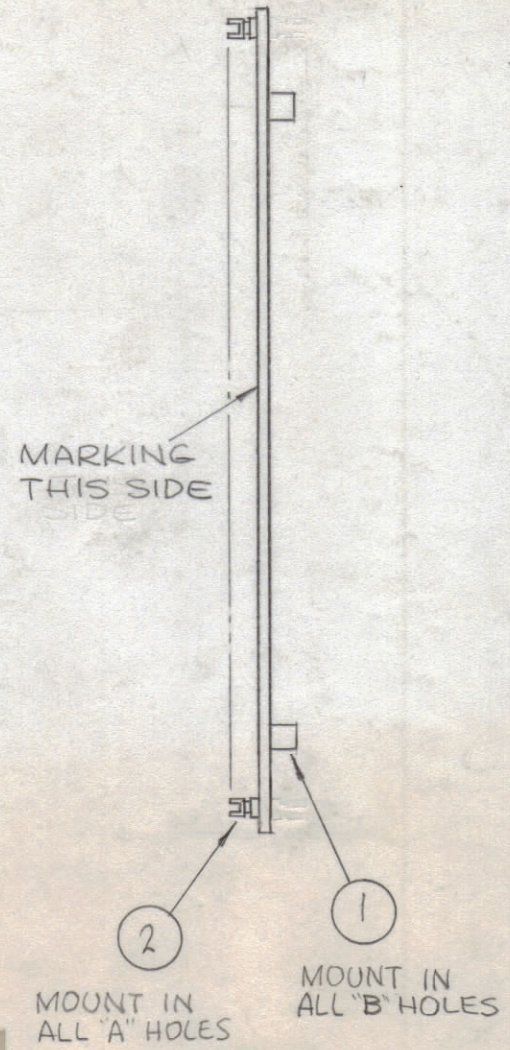
- L8100 L8118
- C8100 C8109
- L8101 L8119
- L8102 L8120
- C8101 C8110
- L8103 L8121
- L8104 L8122
- C8102 C8111
- L8105 L8123
- L8106 L8124
- C8103 C8112
- L8107 L8125
- L8108 L8126
- C8104 C8113
- L8109 L8127
- L8110 L8128
- C8105 C8114
- L8111 L8129
- L8112 L8130
- C8106 C8115
- L8113 L8131
- L8114 L8132
- C8107 C8116
- L8115 L8133
- L8116 L8134
- C8108 C8117
- L8117 L8135

FUNGUS PROOFING PER
TMC SPECIFICATION S-113

MARKING PROCESS: AS PER TMC SPECIFICATION S-727.

LETTERING: 1/8 HIGH BLACK GOTHIC, LOCATED AS SHOWN.

A4481-2
MARKING

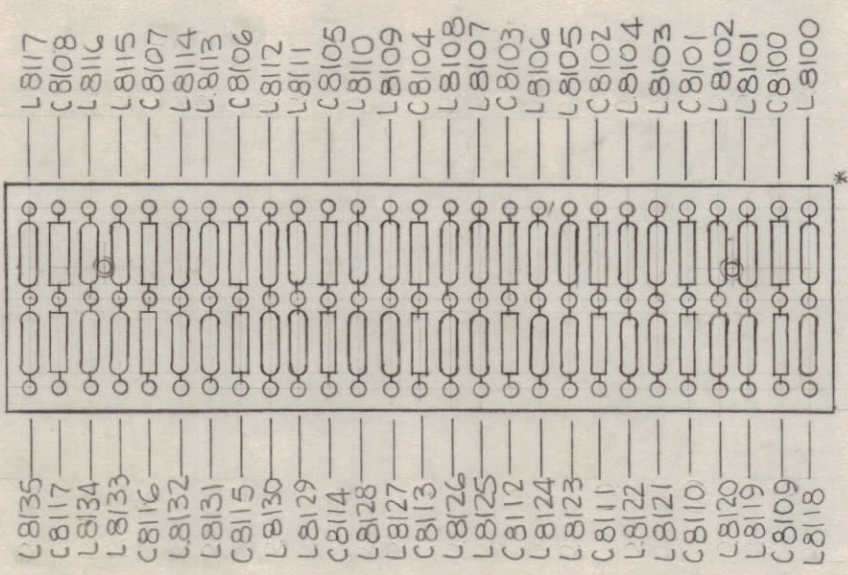


A4481-3
SUB-ASSY

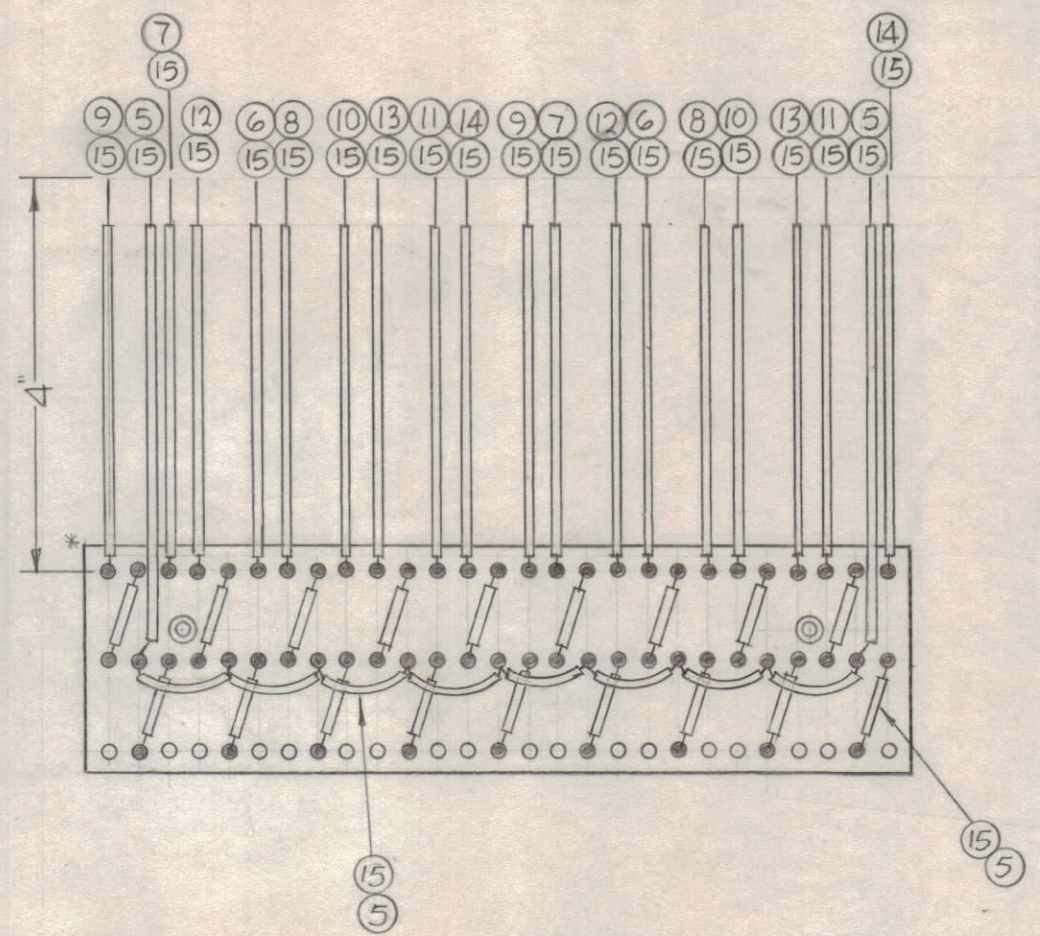
REVISIONS						
ZONE	SYM	DESCRIPTION	DATE	E.M.N. NO.	DRAFT	CHKD
	X	EXP. RELEASE	7-25-66	X		
	X1	REVISED & UPDATED	8-8-66	X1		
	X2	ITEM 2 WAS 18 REQ. INS. REV. ON ITEM 15	9-27-66	X2		
	X	ORIGINAL RELEASE FOR PRODUCTION	12-14-66	B	RME	

A4481-1 (MACHINING AS SHOWN)
A4481-2 (MARKING AS SHOWN)

A4481



TOP VIEW



BOTTOM VIEW

A4481-4
FINAL ASSY

● = DENOTES SOLDER
○ = DENOTES NO SOLDER

NOTES

1EA	RAK-110-2	BMA160
Q'TY./UNIT	MODEL USED ON	ASS'Y. NO.
SCALE 1:2	CODE A	

THE CONTENTS OF THIS DRAWING ARE THE EXCLUSIVE PROPERTY OF THE TECHNICAL MATERIEL CORP. ITS UNAUTHORIZED USE OR REPRODUCTION IN WHOLE OR IN PART IS STRICTLY FORBIDDEN.

REQ'D.	ITEM	PART NUMBER	DESCRIPTION	SYMBOL
X	16	BS100	SOLDER, TIN ALLOY	
X	15	WL100-7	WIRE, ELECT. BUSS	
X	14	PX104-0-034	INS. SLVG. ELECT	
	13	-9		
	12	-8		
	11	-7		
	10	-6		
	9	-5		
	8	-4		
	7	-3		
	6	-2		
X	5	PX104-1-034	INS. SLVG. ELECT.	
18	4	CM15F511J03	CAPACITOR, FIXED, MICA, DIELECTRIC	C810078 C8117
36	3	CL270-10	COIL, RF	L810070 L8135
81	2	TE109-2	TERMINAL STUD	
2	1	TE108-2	NUT, PLAIN CLINCH	

F. BUDETTI		LIST OF MATERIAL	
MATERIAL SEE DWG		THE TECHNICAL MATERIEL CORP. MAMARONECK, NEW YORK	
FINISH SEE DWG		TITLE TERMINAL BOARD ASS'Y	
DRAWN	DATE 7-22-66	FINAL APPROVAL	DATE
CHECKED			
ELECT. DES.	DATE 8-26-66	A4481	
MECH. DES.	DATE 8-26-66	SHEET	REV. LTR.