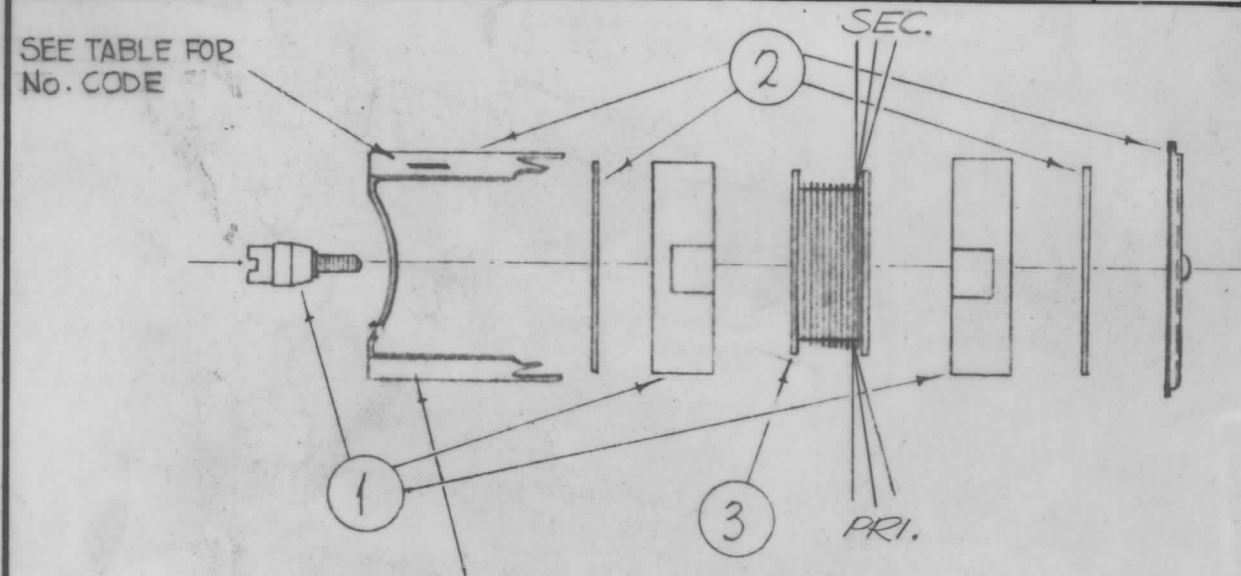


	TEST FREQ	INDUCT	Q	DC RES		
PRI	250 KC	1.36Mh±5%	140 MIN @ 250KC	APPROX 1.2Ω		
SEC				" .3Ω		



STAMP TMC NO.
3/32 HIGH BLACK
GOTHIC W/LATEST
REVISION LETTER

1. PRIMARY WIND 88 TURNS OF ITEM 6 ON ITEM 3 STAKE WITH ITEM 5, TAPPED AT 8 TURNS
2. SECONDARY WIND 16 TURNS OF ITEM 6 OVER PRIMARY AND IN THE SAME DIRECTION, STAKE WITH ITEM 5, CENTER TAPPED
3. SECONDARY WINDING MUST BREAK OUT FROM OPPOSITE SIDE OF PRIMARY.
4. KEEP ALL LEADS 1 1/2" LONG.
5. STRIP AND TIN ALL LEADS TO WITHIN 3/4" OF COIL.
6. COLOR CODE ALL LEADS AS SHOWN IN WIRING DETAIL.
7. BAKE COIL FOR 15 MIN. AT 150°F REMOVE FROM OVEN AND COAT COIL WITH ITEM #4.
8. PLACE ITEM 3 INSIDE OF ITEM 1 AND ASSEMBLE AS PER ASSEMBLY DRAWING.
9. BEND THE FOUR SMALL TABS DOWN.
10. STAMP TMC PART NO. AS SHOWN.
11. TEST INDUCTANCE, AND "Q" AS SHOWN ABOVE ON "Q" METER.
12. BAKE COMPLETED ASSEMBLY FOR ONE HOUR AT 212°F.
13. REMOVE COMPLETED ASSEMBLY FROM OVEN AND ALLOW TO COOL TO ROOM TEMPERATURE.
14. REPEAT STEP NO. 11.
15. USING "Q" METER SET INDUCTANCE PRECISELY TO 1.36 MH AND SEAL ADJUSTER WITH ITEM 8

Ref. TT 283

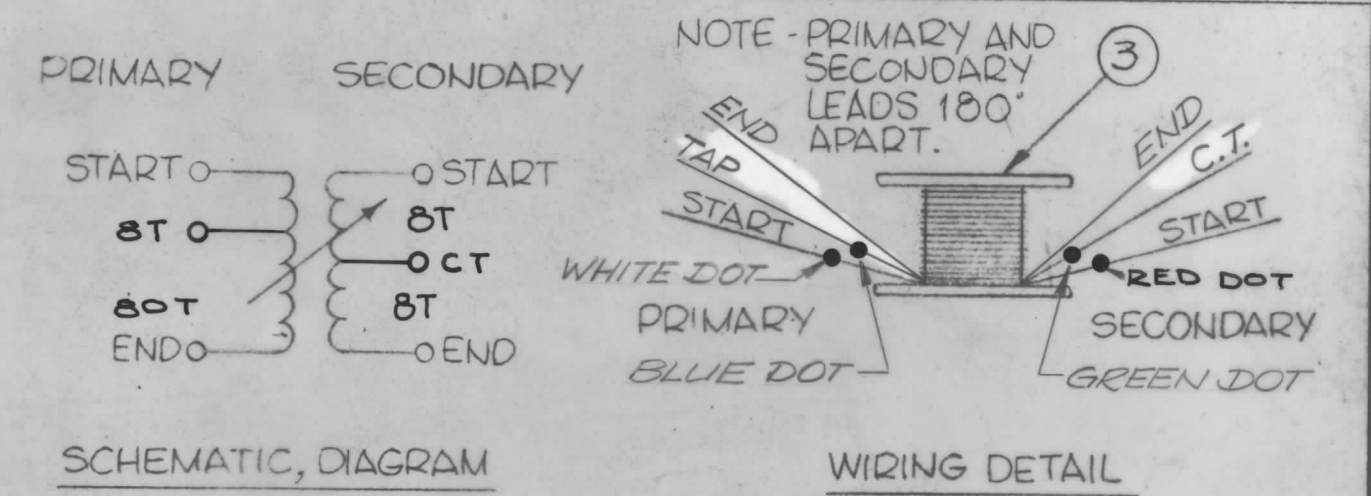
1	CFA-2	A4353
Q'TY./UNIT	MODEL USED ON	ASS'Y. NO.
SCALE	CODE	

THE CONTENTS OF THIS DRAWING ARE THE EXCLUSIVE PROPERTY OF THE TECHNICAL MATERIEL CORP. ITS UNAUTHORIZED USE OR REPRODUCTION IN WHOLE OR IN PART IS STRICTLY FORBIDDEN.

NOTES

A4458

REVISIONS					
SYM	DESCRIPTION	DATE	E.M.N. NO.	DRAFT	CHKD APPD
X	EXPERIMENTAL RELEASE	7-29-64		SRG	
X ₁	DRWG CLARIFIED	5-19-66	X ₁	WWD	
X ₂	"Q" WAS 150 MIN., STEP 14, NO. 11 WAS NO. 9	8-3-66	-M-	Jc	Jc
Ø	ORIGINAL RELEASE FOR PRODUCTION	9-27-66	Ø	RME	
A	PRI & SEC. ON PICT. TAP & C.T ON WIRING DET. ADD	4/29/70	19835	JT+	Jc



REQ'D.	ITEM	PART NUMBER	DESCRIPTION	SYMBOL
X	8	GL110	WAX, IMPREGNATING	
X	7	BS100	SOLDER, TIN ALLOY	
X	6	WI 141-32-9		
X	5	GL103	ADHESIVE, N-CEL	
X	4	GL130	ADHESIVE, Q-DOPE	
1	3	CF135-9	FORM, COIL, 2 FLANGE	
1	2	CU158-1	RETAINER	
1	1	CI137-9	CORE, ADJUSTABLE, TUNING	

DUDDLES LIST OF MATERIAL

MATERIAL		THE TECHNICAL MATERIEL CORP. MAMARONECK, NEW YORK			
FINISH		TITLE ASS'Y, XFMR, R.F ADJUSTABLE			
UNLESS OTHERWISE SPECIFIED DIMENSIONS ARE IN INCHES AND INCLUDE CHEMICALLY APPLIED OR PLATED FINISHES		DRAWN	DATE	FINAL APPROVAL	DATE
DECIMALS .X ± .05 .XX ± .01 .XXX ± .005		CHECKED	DATE	A4458	A
FRACTIONS ± 1/64 ANGLES ± 0° 30'		ELECT. DES. MECH. DES.	DATE		
TOLERANCES		DATE		SHEET	REV. LTR.