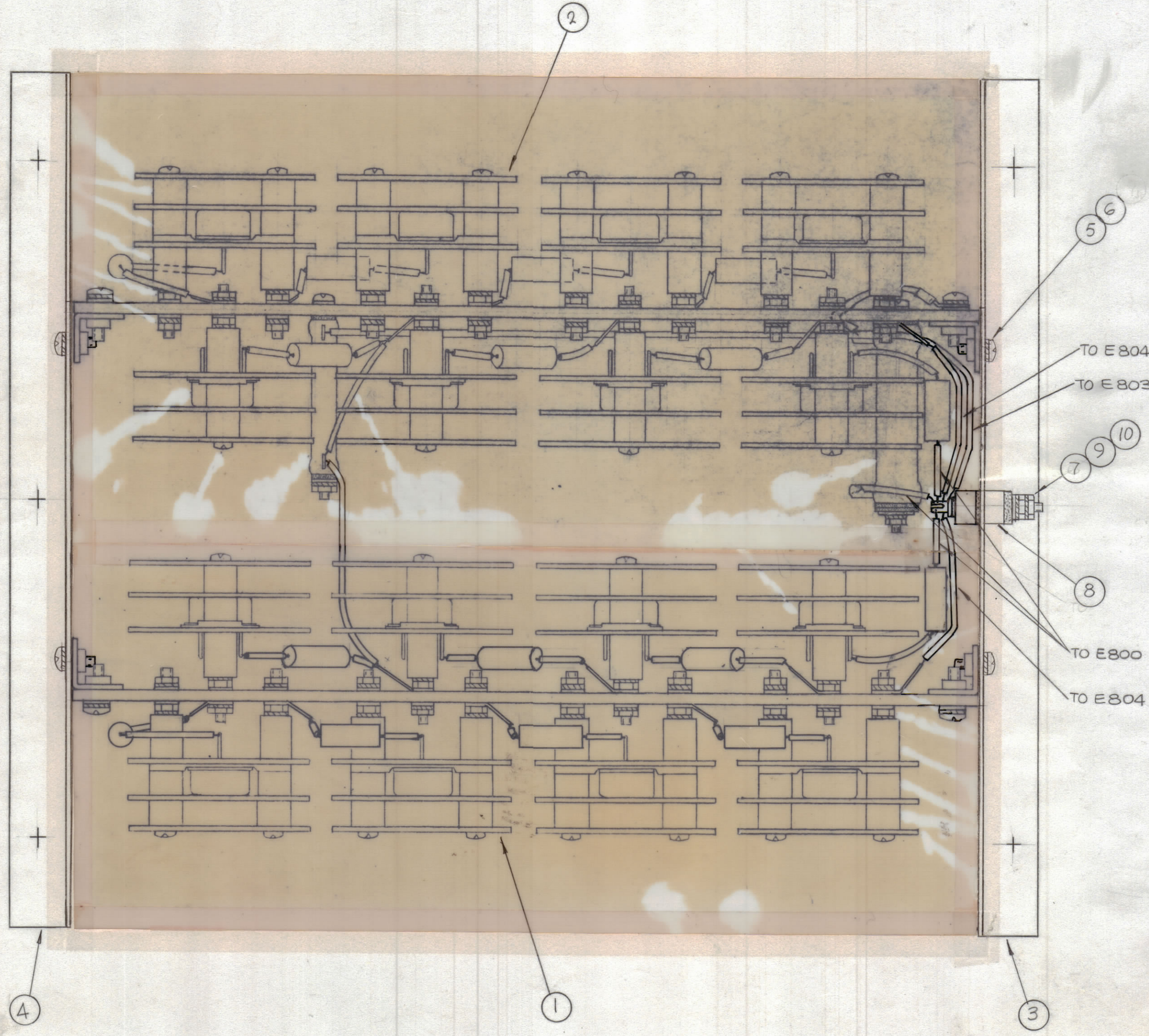


REVISIONS							
ZONE	SYM	DESCRIPTION	DATE	E.M.N. NO.	DRAFT	CHKD	APPD
	Ø	ORIGINAL RELEASE FOR PRODUCTION	3/7/66		HLA		<i>[Signature]</i>



REQ'D.	ITEM	PART NUMBER	DESCRIPTION	SYMBOL
X	11	BS100	SOLDER, TIN ALLOY	
6	10	NTH0632BNS	NUT, PLAIN HEX	
6	9	LWE06MRN	WASHER, LOCK, EXT.	
3	8	TE101-3	INS, FD, THRU	
3	7	FW06HBN	WASHER, FLAT	
8	6	LWE08MRN	WASHER, LOCK, EXT.	
8	5	SCBP0832BNG	SCREW, MACHINE	
1	4	MS 4217	PLATE, SIDE, LEFT	
1	3	LD1700/MS 4213	PLATE, SIDE, RIGHT	
1	2	A4309	SECOND DEVICE SET ASSY	
1	1	A4310	SECOND DEVICE SET ASSY	

F. BUDETTI LIST OF MATERIAL			
MATERIAL	THE TECHNICAL MATERIEL CORP. MAMARONECK, NEW YORK		
FINISH	TITLE SEMI CONDUCTOR, DEVICE SET, FINAL ASSY		
	DRAWN <i>[Signature]</i>	DATE 3-4-66	FINAL APPROVAL <i>[Signature]</i>
	CHECKED <i>[Signature]</i>	DATE 3-4-66	DATE 3/7/66
	ELECT. DES. <i>[Signature]</i>	DATE	A4438
	MECH. DES. <i>[Signature]</i>	DATE	Ø
	SHEET	REV. LTR.	

Q'TY/UNIT	MODEL USED ON	ASS'Y. NO.
1	GPT-10KLF	AP125
SCALE 1:1	CODE A	

NOTES
THE CONTENTS OF THIS DRAWING ARE THE EXCLUSIVE PROPERTY OF THE TECHNICAL MATERIEL CORP. ITS UNAUTHORIZED USE OR REPRODUCTION IN WHOLE OR IN PART IS STRICTLY FORBIDDEN.