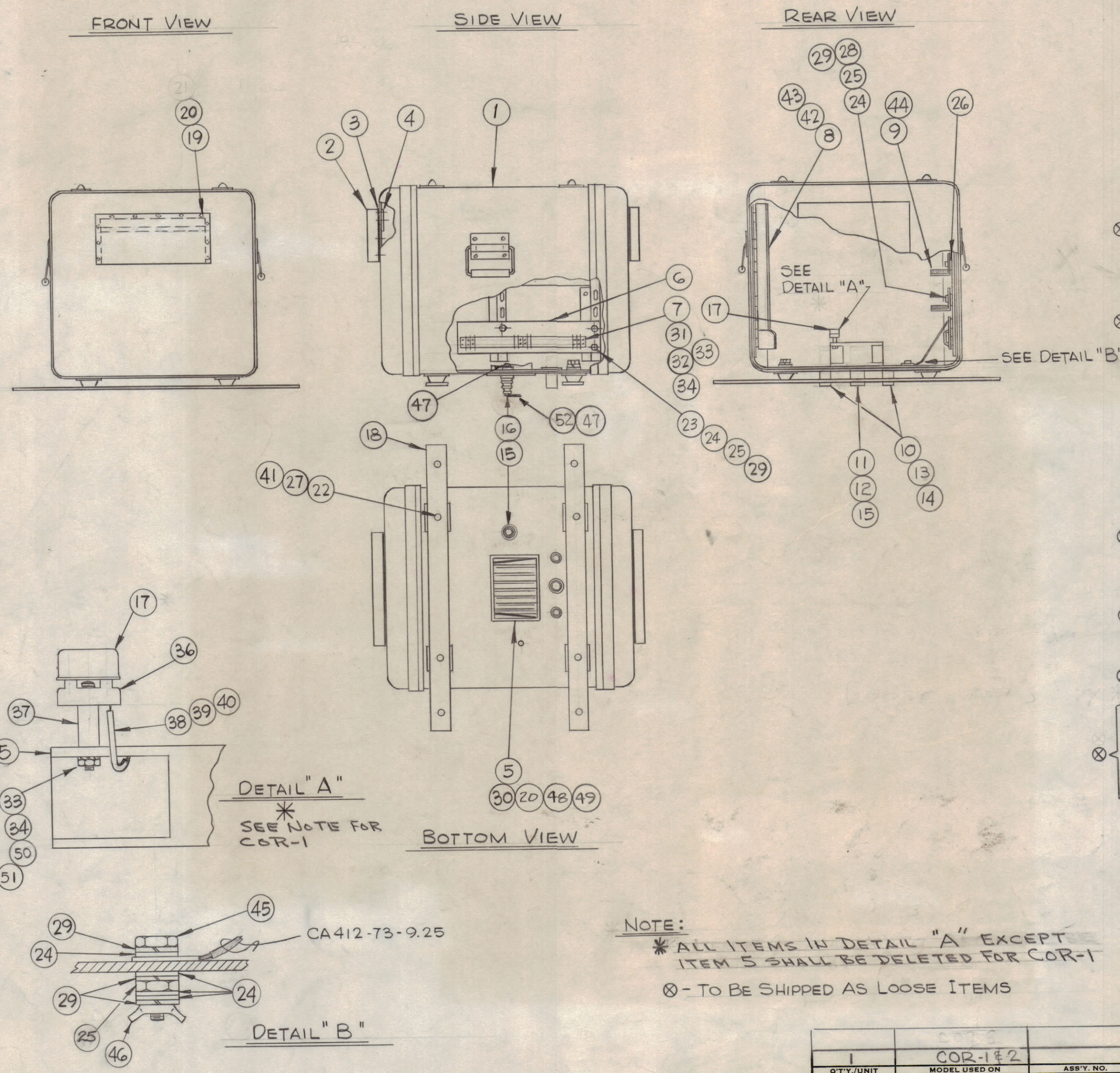


REVISIONS							
ZONE	SYM	DESCRIPTION	DATE	E.M.N. NO.	DRAFT	CHKD	APPD
		ORIGINAL RELEASE FOR PRODUCTION	1/14/66				
	A	ITEMS (50), (51) & (52) ADDED. QTY. ITEM (12) WAS 4, ITEM (13) WAS 2, ITEM (15) WAS 4 & ITEM 35 WAS 8	3-4-66	15910	G.D.L.	QCB	MM



REQ'D.	ITEM	PART NUMBER	DESCRIPTION	SYMBOL
1	52	TE141-4	TERM. LUG- No 1/4	
1	51	WA109-17	WASHER, FIBER	
1	50	SCBP0440BN20	SCREW, MACHINE	
4	49	FW06HBN	WASH., FLAT	
4	48	NTH0632BN8	NUT, FLN, HEX	
⊗	2	47	NTH2520BN4	NUT, PLN, HEX
1	46	NT110-2520BN	NUT, PLN, WING	
1	45	SCHH2520BN 24	SCREW, MACHINE	
8	44	TA111-2-10-2.50A	TAPE, URETHANE	
2	43	NT154-1-2520	NUT, SHEET SPRING	
2	42	SCHH2520BN6	BOLT, MACHINE	
⊗	4	41	LWS31MRN	WASHER, LOCK, SPLIT
X	40	BS100	SOLDER, TIN ALLOY	
X	39	PX830-18-1	INS, SLEEVING - SHRINK	
3"	38	MWC18(16)UO	WIRE, ELEC, INSULATED	
1	37	TE117-31	SPACER, SLV	
1	36	TS104-1	SOCKET, XTAL	
8	35	SCBP0440BN10	SCREW, MACHINE	
9	34	NTH0440BNG	NUT, PLN, HEX	
9	33	LWE04MRN	WASHER, LOCK, EXT	
4	32	MS154-1	PLATE, MTG, TERM. BD	
2	31	PX337-14	INS, TERM. BD	
4	30	SCFPO632BNG	SCREW, MACHINE	
40	29	LWS25MRN	WASHER, LOCK, SPLIT	
34	28	SCHH2520BN10	SCREW, MACHINE	
⊗	4	27	FW31HBN	WASHER, FLAT
9	26	MS1306	PLATE, MTG.	
38	25	NTH2520BN14	NUT, HEX	
41	24	FW25HBN	WASHER, FLAT	
3	23	SCHH2520BN8	SCREW, MACHINE	
⊗	4	22	SCHH3118BN20	SCREW, MACHINE
<del>21</del>		<del>DELETED</del>	<del>---</del>	
26	20	LWE06MRN	WASHER, LOCK	
⊗	22	19	SCBP0632BN4	SCREW, MACHINE
2	18	PM1287	PLATE, MTG, OUTSIDE	
1	17	SS109-1-35NO	SWITCH, THERMOSTATIC	
1	16	NS107	INSULATOR, FEEDTHRU	
2	15	GA140-10N4	GASKET	
4	14	GA140-BN4	GASKET	
4	13	FW100-10AE	WASHER, FLAT	
2	12	FW100-9AE	WASHER, FLAT	
1	11	PO206-3	TUBE, TERMINAL	
2	10	PO206-2	TUBE, TERMINAL	
8	9	MS4783	BRACKET, MOUNTING	
1	8	AX622	STRIP ASSY., AC	
2	7	TM100-14	TERM. STRIP, BARRIER	
1	6	MS4777	PLATE, MTG, TERM. STRIP	
1	5	BL106-4	FAN, VENTILATING	
2	4	MS4782	SCREEN, VENTILATING	
2	3	GA10	GASKET, HOOD	
2	2	MS4781	HOOD	
1	1	CW105	CASE, MODIFIED (CW104)	

A4409

DETAIL "A"  
\* SEE NOTE FOR COR-1

NOTE:  
\* ALL ITEMS IN DETAIL "A" EXCEPT ITEM 5 SHALL BE DELETED FOR COR-1  
⊗ - TO BE SHIPPED AS LOOSE ITEMS

LIST OF MATERIAL				
MATERIAL		THE TECHNICAL MATERIEL CORP. MAMARONECK, NEW YORK		
FINISH		TITLE ASSEMBLY, CASE		
UNLESS OTHERWISE SPECIFIED DIMENSIONS ARE IN INCHES AND INCLUDE CHEMICALLY APPLIED OR PLATED FINISHES		DRAWN H. AUSTIN	DATE 12-17-65	FINAL APPROVAL <i>[Signature]</i>
		CHECKED <i>[Signature]</i>	DATE 1-13-66	
		ELECT. DES. <i>[Signature]</i>	DATE 1-10-66	
		MECH. DES.	DATE	
		SHEET		REV. LTR.

COR-1 & 2		
QTY./UNIT	MODEL USED ON	ASS'Y. NO.
SCALE	CODE	
THE CONTENTS OF THIS DRAWING ARE THE EXCLUSIVE PROPERTY OF THE TECHNICAL MATERIEL CORP. ITS UNAUTHORIZED USE OR REPRODUCTION IN WHOLE OR IN PART IS STRICTLY FORBIDDEN.		

NOTES