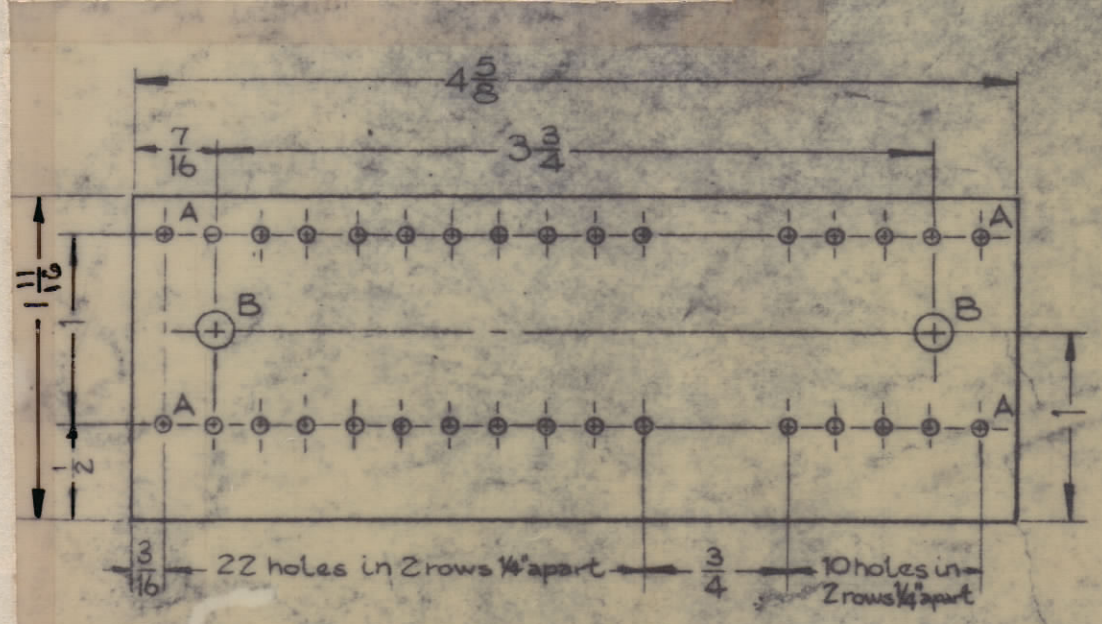


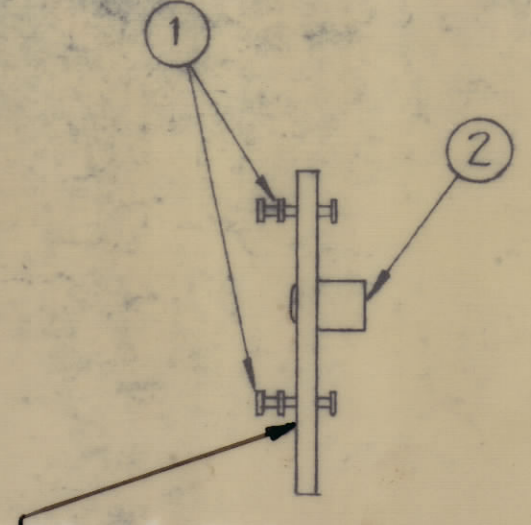
Holes	REQ'D.
A ~ 5/64 (.078) Dia.	32
B ~ .189 Dia.	2

REVISIONS					
ZONE	SYM	DESCRIPTION	DATE	E.M.N. NO.	APPD
	Ø	- ORIGINAL RELEASE FOR PRODUCTION	1/20/66		
	A	ITEM 14 WAS IN100	3-13-67	17956	C DL



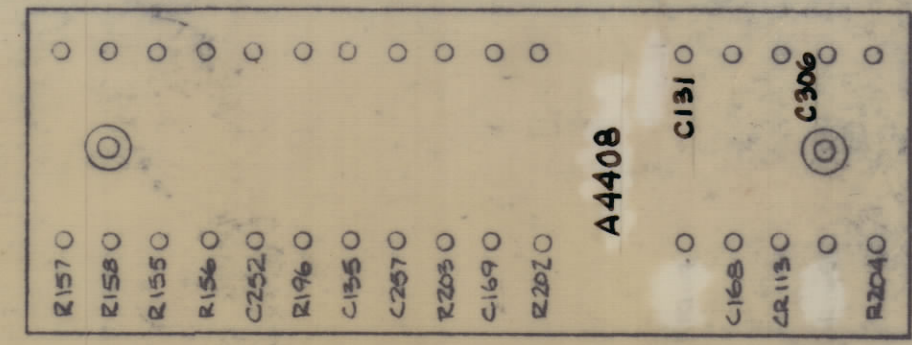
A4408-1  
MACHINING (TOP)

Material: 1/16thick, Natural Phenolic, XXXP Laminated.



A4408-3  
~ SUB-ASSEMBLY

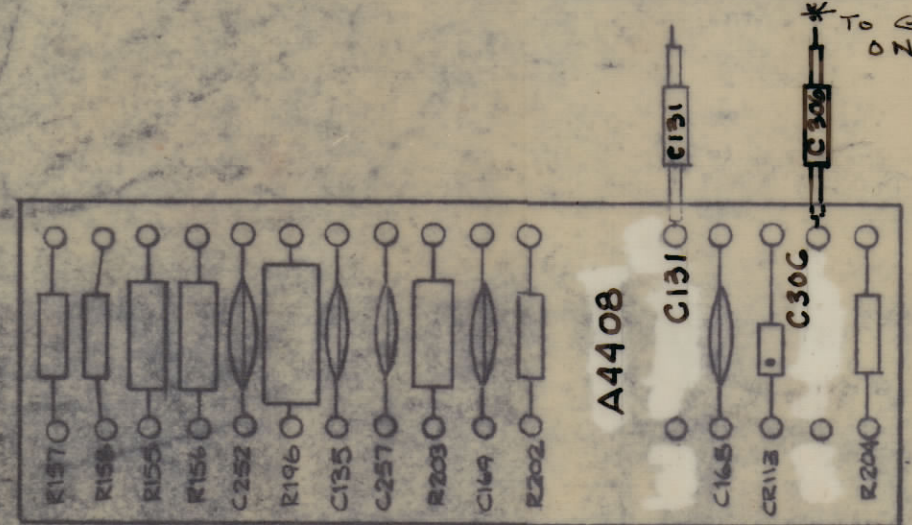
MARKING PROCESS: AS PER TMC SPECIFICATION S-727.  
LETTERING: 1/8 HIGH BLACK GOTHIC, LOCATED AS SHOWN.



Stamp as Shown

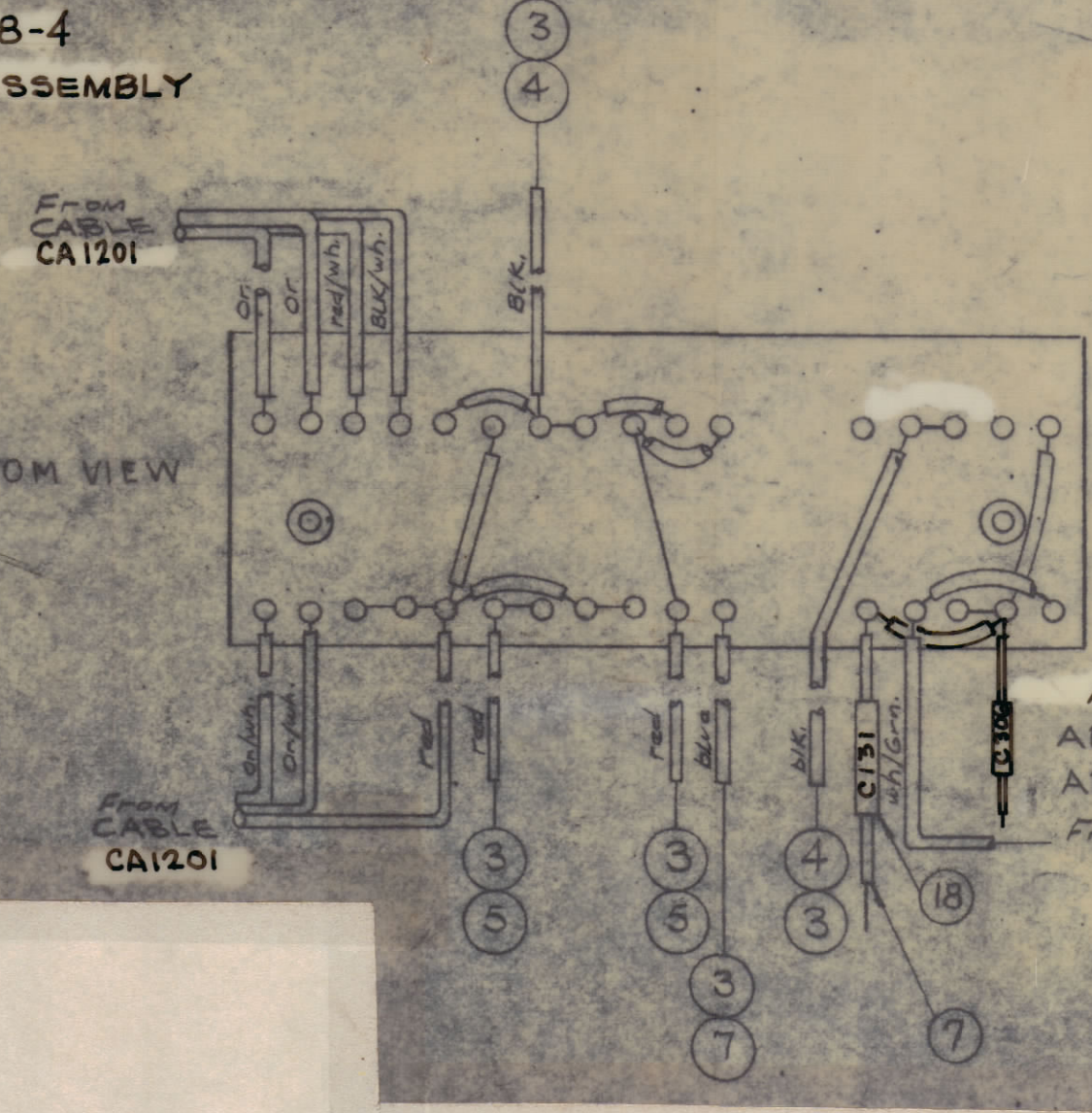
A4408-2  
~ STAMPING

TOP VIEW



A4408-4  
FINAL ASSEMBLY

BOTTOM VIEW



Note:  
All Jumpers will be item 3  
All Jumper Sleeving will be item 4.  
From CABLE CA1201

REQ'D.	ITEM	PART NUMBER	DESCRIPTION	SYMBOL
	C131 C306	2 18	CC21SLR5C	CAPACITOR, FIXED, CER
	R156, R155	X 17	BS 100	SOLDER, TIN ALLOY
	R158, R157	2 16	RC32GF223J	RESISTOR, FIXED, COMP.
	C2113	1 14	1N252	DIODE, XTAL
		1 13	RC42GF103J	RESISTOR, FIXED, COMP. R196
		1 12	RC32GF122J	RESISTOR, FIXED, COMP. R203
		1 11	RC20GF224J	RESISTOR, FIXED, COMP. R204
		1 10	RC20GF473J	RESISTOR, FIXED, COMP. R202
		9	DELETED	
	C135, C168 C169, C252 C257	5 8	CC100-1G	CAPACITOR, FIXED
		X 7	PX104-6-.034	INSULATION, SLEEVING BLUE
		6	DELETED	
		X 5	PX104-3-.034	INSULATION, SLEEVING RED
		X 4	PX104-1-.034	INSULATION, SLEEVING BLK
		X 3	WL100-7	WIRE, BUSS #22
		2 2	TE108-1	STANDOFF
		32 1	TE168-4B	TERMINAL, MINIATURE

LIST OF MATERIAL				
MATERIAL	THE TECHNICAL MATERIEL CORP. MAMARONECK, NEW YORK			
FINISH	TITLE RF CHASSIS TERMINAL BOARD ASS'Y.			
UNLESS OTHERWISE SPECIFIED DIMENSIONS ARE IN INCHES AND INCLUDE CHEMICALLY APPLIED OR PLATED FINISHES	DRAWN H. AUSTIN	DATE 1-19-66	FINAL APPROVAL <i>[Signature]</i>	DATE 1/20/66
DECIMALS X ± .05 .XX ± .01 .XXX ± .005	TOLERANCES ± 1/64 ANGLES ± 0° 30'	ELECT. DES. <i>[Signature]</i>	DATE 1-20-66	REV. LTR. A
		MECH. DES.	DATE	SHEET

1	SBE-8,9,10	AXG21
QTY./UNIT	MODEL USED ON	ASS'Y. NO.
SCALE	CODE	

THE CONTENTS OF THIS DRAWING ARE THE EXCLUSIVE PROPERTY OF THE TECHNICAL MATERIEL CORP. ITS UNAUTHORIZED USE OR REPRODUCTION IN WHOLE OR IN PART IS STRICTLY FORBIDDEN.

NOTES

A4408  
A