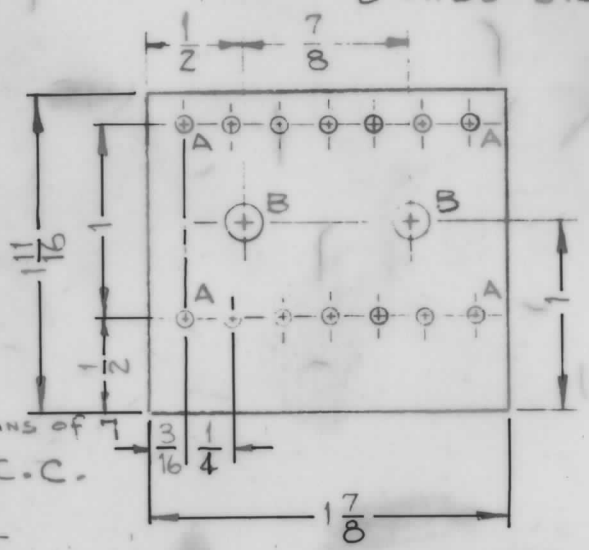


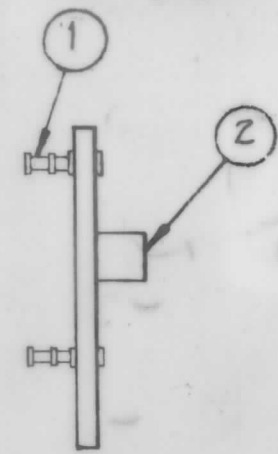
A4407

Holes Req'd.
 A ~ 5/64 (.078) Dia. 14
 B ~ .189 Dia. 2



A4407-1

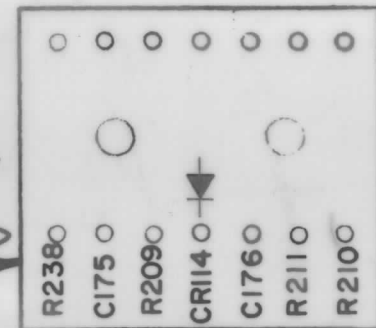
MATERIAL: NATURAL PHENOLIC, XXXP 1/16 THICK.



A4407-3
 ~SUB-ASSEMBLY

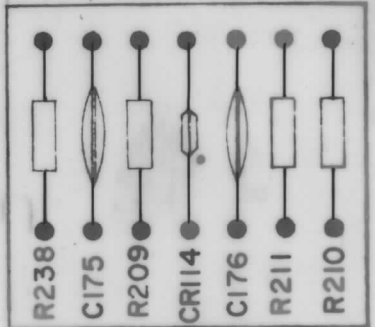
MARKING PROCESS: AS PER TMC SPECIFICATION S-727.
 LETTERING: 1/8 HIGH BLACK 'GOTHIC', LOCATED AS SHOWN.

MARK TMC PT. No.
 W/LATEST REV.
 LETTER ON REAR

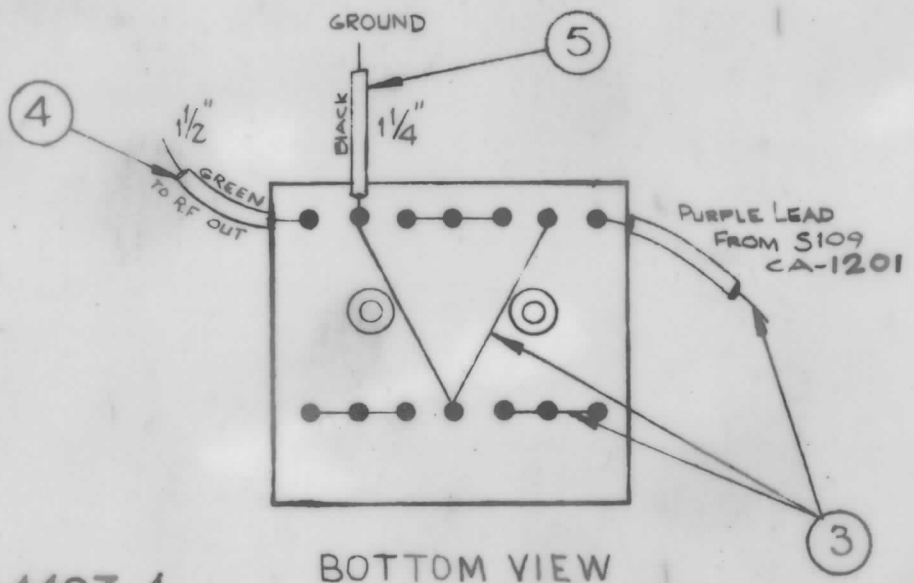


A4407-2
 ~STAMPING

NOTE: SOLDER ALL SPOTS MARKED ●.



TOP VIEW



A4407-4

BOTTOM VIEW

X	13	BS100	SOLDER, TIN ALLOY	
1	12	1N252	DIODE	CR114
1	11	CM15F101J03	DISK CAPACITOR	C176
1	10	CC100-29	DISK CAPACITOR	C175
1	9	RC20GF564J	RESISTOR, FIXED, COMP.	R238
1	8	RC20GF394J		R209
1	7	RC20GF561J		R211
1	6	RC20GF102J	RESISTOR, FIXED, COMP.	R210
1"	5	PX104-1-.034	INSULATION SLEEVING	BLACK
1 1/4"	4	PX104-4-.034	INSULATION SLEEVING	GREEN
X	3	WL100-7	WIRE, BUSS-BAR, TINNED	
2	2	TE108-1	STANDOFF, RIVET TYPE	
14	1	TE168-4B	TERMINAL, MINIATURE	

C	POLARITY SYMBOL ADDED	3/30/71	20298	GE	OW	Red
B	ITEM 12 WAS 1N100	3-13-67	17956	C.D.L	W	Red
A	IT 9 WAS RC20GF564J	6/21/66	16438	uw	W	Red
Ø	ORIGINAL RELEASE	1/20/66	Ø			

TOLERANCES		SCALE:	
DEC. DIM. ±		MAXIMUM ALLOWABLE TOLERANCES HAVE BEEN DETERMINED AND ANY DEVIATIONS WILL BE CAUSE FOR REJECTION.	
FRAC. DIM. ±		REMOVE ALL BURRS AND SHARP EDGES	
ANGULAR DIM. ±			

REQ. PER UNIT	MODEL	PROJECT NO.	ASS'Y. NO.	DATE
1	SBE-8,9,10	AX621		1-13-66
USED ON				

REQ. ITEM	PART NO.	DESCRIPTION	SYMBOL
1/16"		THE TECHNICAL MATERIEL CORP.	
STOCK SIZE		MAMARONECK, NEW YORK	
PHENOLIC		TERMINAL BOARD,	
MATERIAL		RF OUTPUT METER	
XXX		H. AUSTIN	JDE 1/20/66
TYPE & TEMPER	HEAT TREAT. SPEC.	DRAWN	CHECKED
NATURAL			
FINISH & SPEC. NO.	ELEC. DES. APP.	MECH. DES. APP.	FINAL APPROVAL
			A4407 C