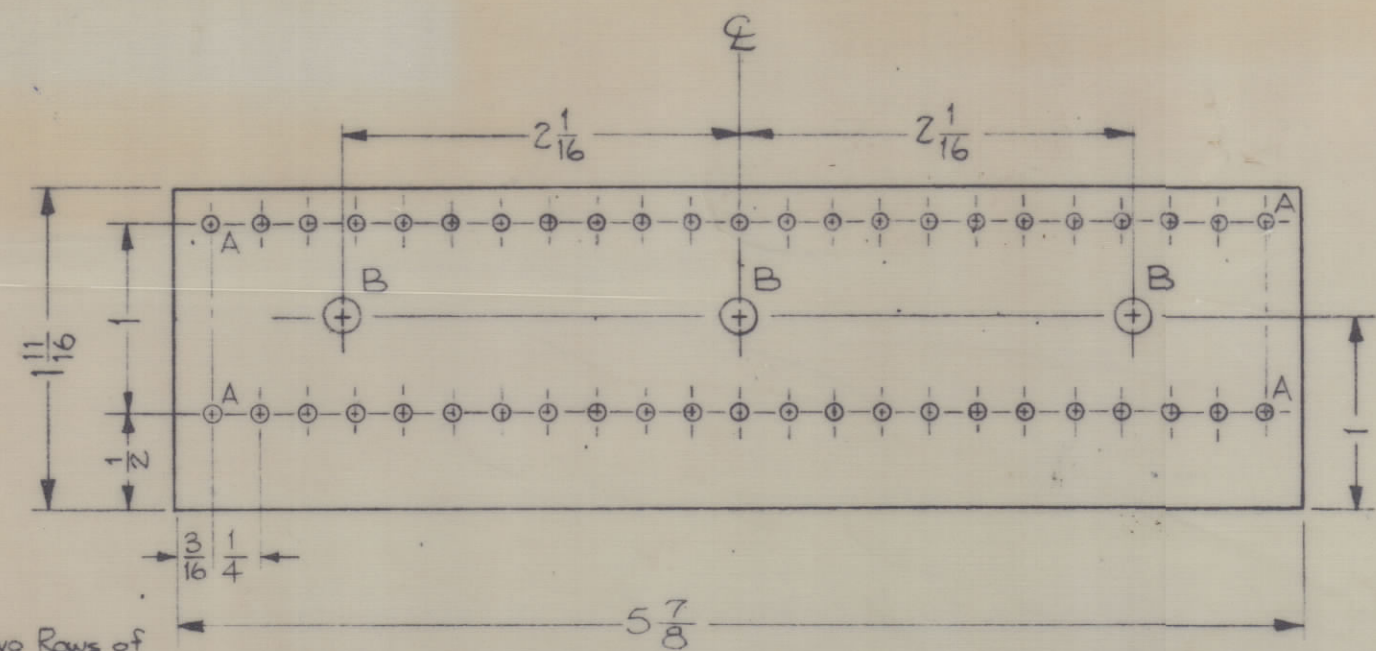


IF IT IS FOUND DESIRABLE TO CHANGE ANY TOLERANCE OR OTHER DETAIL SPECIFIED ON THIS DRAWING NOTIFY THE PURCHASER PROMPTLY.
 MAXIMUM ALLOWABLE TOLERANCES HAVE BEEN DETERMINED AND DEVIATIONS WILL BE CAUSE FOR REJECTION. REMOVE ALL BURRS AND SHARP EDGES.

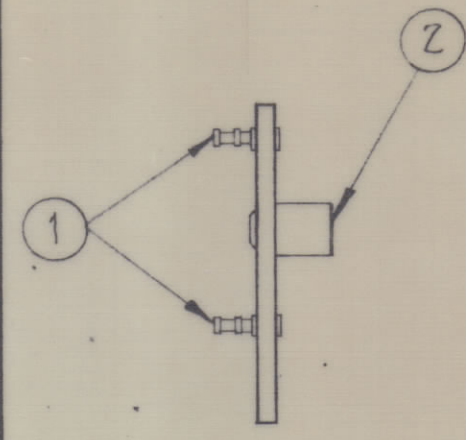
HOLES REQ'D.
 A ~ 5/64 (.078) Dia 46
 B ~ #12 drill (.189) Dia 3



NOTE:
 46 holes into Rows of 23, 1/4" C.to.C.

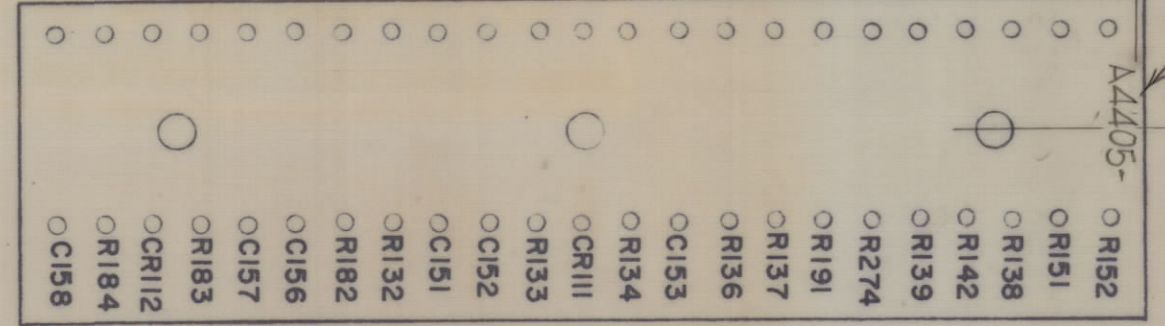
A4405-1 MACHINING
 (TOP)

MATERIAL: 1/16THK PHENOLIC, XXXP
 FINISH: NATURAL



A4405-2 SUB-ASSEMBLY
 (SIDE)

MARKING PROCESS AS PER TMC SPECIFICATION S727.
 ALL LETTERING 1/8 HIGH BLACK GOTHIC

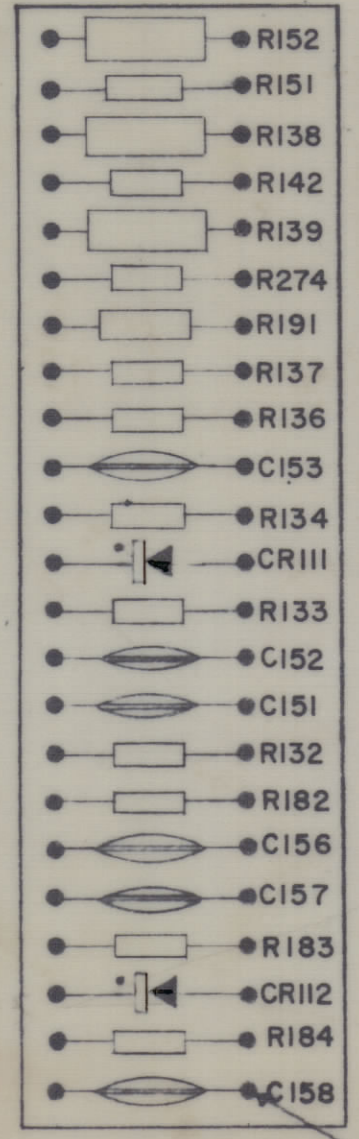


MARK TMC PART NO. W/LATEST REVISION LETTER.

FINISH: (AFTER MARKING) S113-FUNGUS PROOF VARNISH.

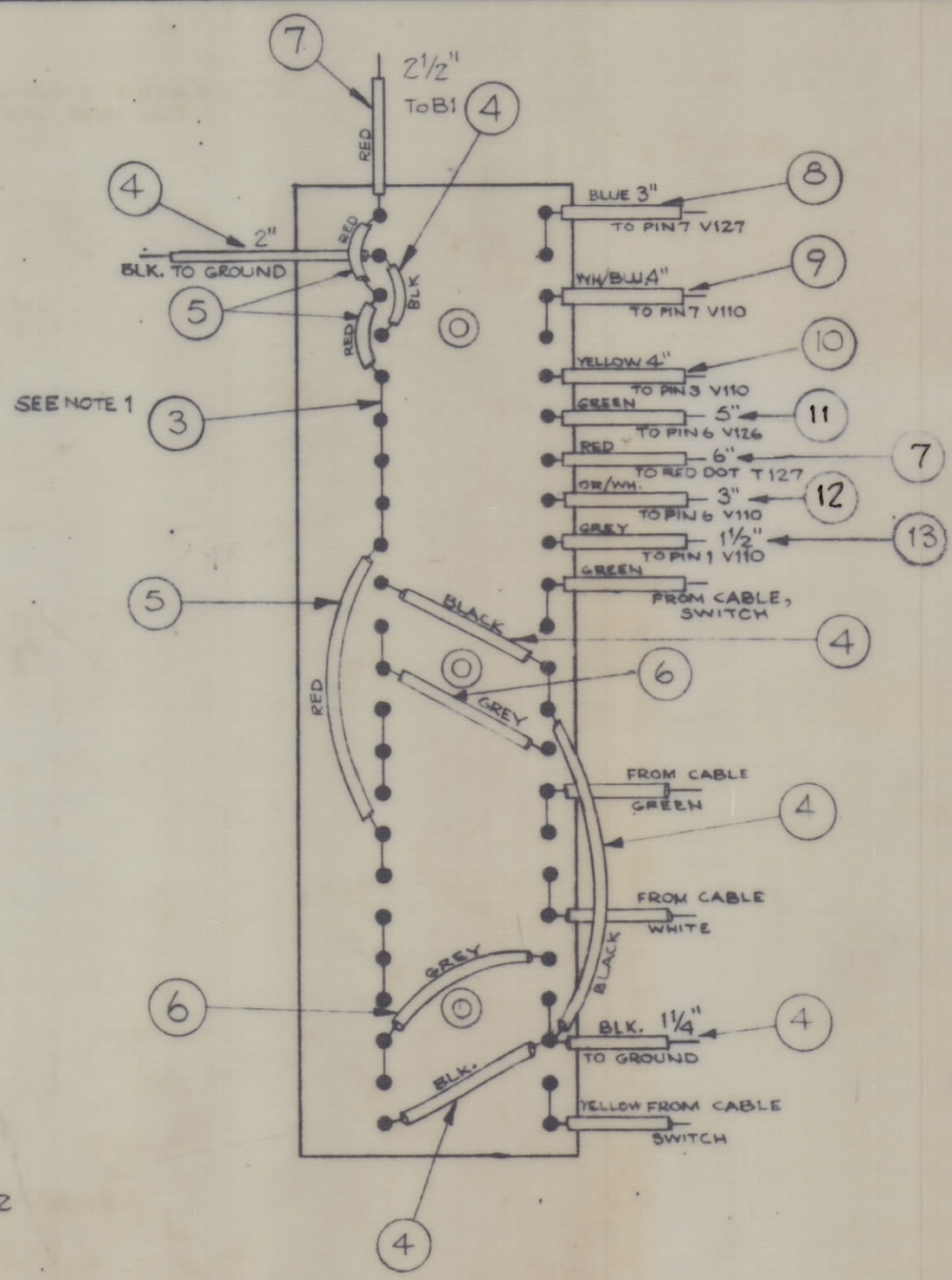
A4405-3 STAMPING
 (TOP)

~NOTES~
 1. ALL BUSS WIRE USED IS WL-100-7 (#22 WIRE).
 2. ALL SPOTS MARKED ● ARE TO BE SOLDERED WITH BS-100.



COMPONENT LAYOUT (TOP)

A4405-4



WIRING (BOTTOM)

REQ. ITEM	PART NO.	POSE	DESCRIPTION	SYMBOL
	2	24	IN463	DIODE
	6	23	CC100-16	CAPACITOR, DISK
	2	22	RC20GF106J	RESISTOR, FIXED, COMP.
	2	21	RC20GF684J	
	1	20	RC32GF102J	
	1	19	RC20GF823J	
	1	18	RC42GF104J	
	4	17	RC20GF104J	
	1	16	RC20GF102J	
	1	15	RC20GF821J	
	2	14	RC42GF823J	RESISTOR, FIXED, COMP.
	1 1/2	13	MWC22(7)U8	WIRE, ELECTRICAL, INSULATED
	3"	12	93	
	5"	11	5	
	4"	10	4	
	4"	9	96	
	3"	8	MWC22(7)U6	
	8 1/2"	7	MWC22(7)U2	WIRE, ELECTRICAL, INSULATED
	X	6	PX-104-7-034	INSULATION, SLEEVING
	X	5	PX-104-3-034	
	X	4	PX-104-1-034	INSULATION, SLEEVING
	X	3	WL-100-7	WIRE, BUSS-BAR, TINNED
	3	2	TE-108-1	STANDOFF, RIVET TYPE
	46	1	TE-168-4B	TERMINAL, MINIATURE

ISSUE	ITEM	CHANGED FROM	DATE	CH. NO.	DRAFTS	CHECKER	ENG. APP.
		IT 21 WAS RC20GF681J	11/10/66	17237	RME		
		ORIGINAL RELEASE	1/20/66				

REQ. PER UNIT	MODEL	PROJECT NO.	ASSY. NO.	DATE
1	GBE-8, 9, 10	A X 205-8		12-13-65

THE TECHNICAL MATERIEL CORP. MAMARONECK, NEW YORK		
STOCK SIZE		
MATERIAL WEIGHT PER FC.		
TYPE & TEMPER		
HEAT TREAT. SPEC.		
FINISH & SPEC. NO.		
DRAWN		MECH. DES. APP.
CHECKED		FINAL APPROVAL
		A4405