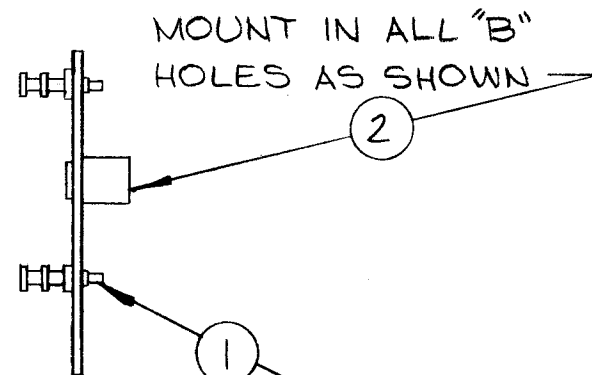


HOLE	DESCRIPTION	REQ'D
A	.078 DIA	8
B	.189 DIA	2

A4403-1 ~ MACHINING  
TOP VIEW

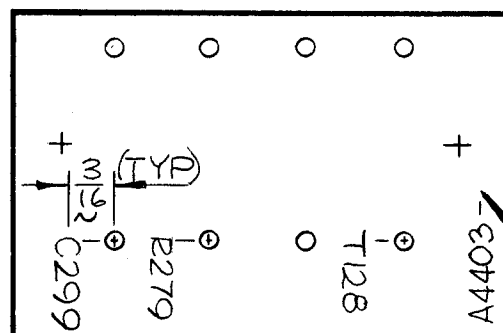
1/16 THK PHENOLIC XXXP  
FINISH: S113 FUNGUS PROOF VARNISH



MOUNT IN ALL "A"  
HOLES AS SHOWN

A4403-3 ~ SUB-ASSEMBLY  
SIDE VIEW

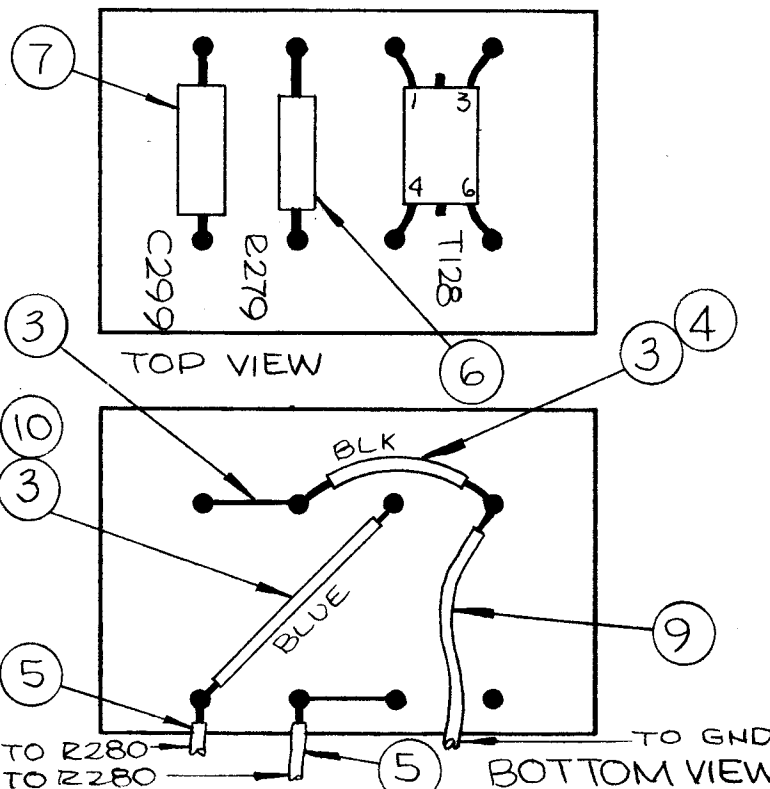
A4403-2 ~ MARKING  
TOP VIEW



MARK TMC PT/No. 1/8 HIGH  
GOTHIC W/LATEST REVISION LETTER

MARKING PROCESS: AS PER TMC  
SPEC S727  
LETTERING: 1/8 HIGH BLACK GOTHIC,  
LOCATED AS SHOWN

NOTE ~ ALL BUSS WIRE  
USED IS WL100-7 (#22 AWG)  
(ITEM NO. 3)



TOP VIEW

BOTTOM VIEW

A4403

REVISIONS

SYM	DESCRIPTION	DATE	E.M.N. NO.	DRAFT	CHKD	APPD
X3	REDRAWN	6.2.66	++	WFW		
Ø	ORIGINAL RELEASE FOR PRODUCTION	12-22-66	Ø	RME		

REQ'D.	ITEM	PART NUMBER	DESCRIPTION	SYMBOL
X	11	BS100	SOLDER, TIN ALLOY	
2"	10	PX106-6-034	INSULATION, SLEEVING	
4"	9	MWC22(7)U0	WIRE, ELECT, INS	
1	8	TF228K15	TRANSFORMER, PULSE	T128
1	7	CM20FG81G03	CAPACITOR, MICA	C299
1	6	RC20GF102J	RES, FIXED, COMP	R279
10"	5	MWC22(7)U6	WIRE, ELECT, INS	
X	4	PX104-1-034	INSULATION, SLEEVING	
X	3	WL100-7	WIRE, BUSS-BAR, TINNED	
2	2	TE108-1	STANDOFF, RIVET	
8	1	TE168-4B	TERMINAL, MINIATURE	

POSE LIST OF MATERIAL

MATERIAL		THE TECHNICAL MATERIEL CORP. MAMARONECK, NEW YORK			
FINISH		TITLE TERMINAL BOARD SBE-8,9,10			
UNLESS OTHERWISE SPECIFIED DIMENSIONS ARE IN INCHES AND INCLUDE CHEMICALLY APPLIED OR PLATED FINISHES		DRAWN WFW	DATE 6.2.66	FINAL APPROVAL	
DECIMALS .X ± .05 .XX ± .01 .XXX ± .005		CHECKED [Signature]	DATE 12/22/66	DATE	
TOLERANCES		ELECT. DES. [Signature]	DATE 12/22/66	A4403	
FRACTIONS ± 1/64 ANGLES ± 0° 30'		MECH. DES.	DATE	SHEET	
				REV. LTR.	

NOTES

THE CONTENTS OF THIS DRAWING ARE THE EXCLUSIVE PROPERTY  
OF THE TECHNICAL MATERIEL CORP. ITS UNAUTHORIZED USE OR  
REPRODUCTION IN WHOLE OR IN PART IS STRICTLY FORBIDDEN.

SBE-8,9,10		AX205-8
Q'TY./UNIT	MODEL USED ON	ASS'Y. NO.
SCALE 1/1	CODE	