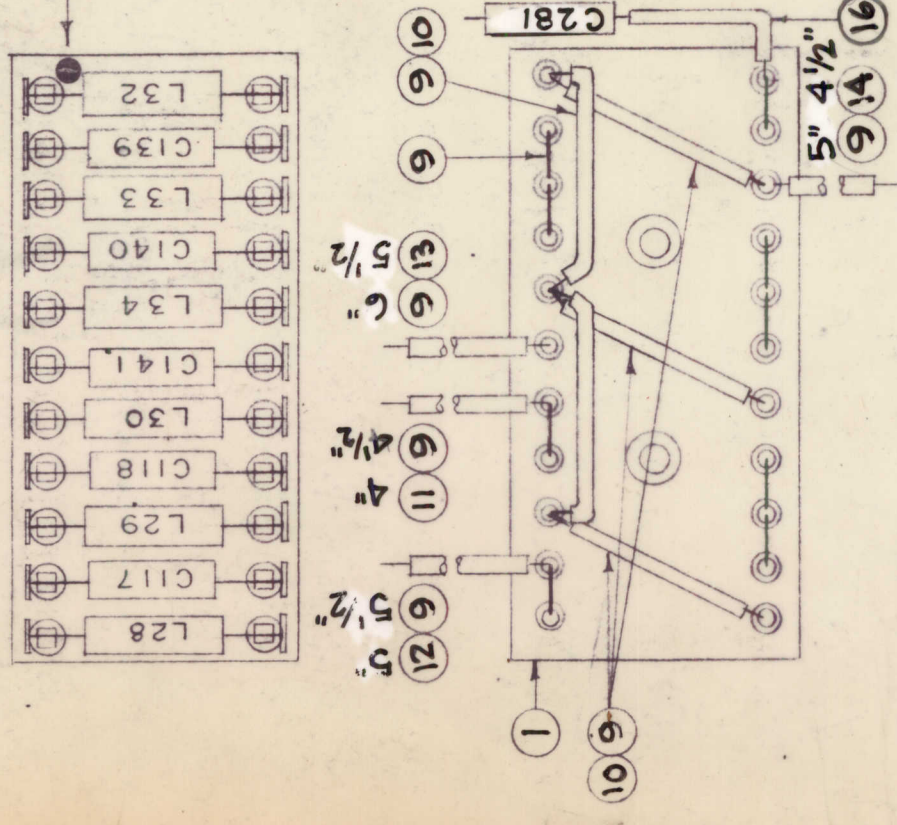


SYMBOL(S)	ITEM NO.	USED TO MOUNT	QUAN.	REQ. PER UNIT	USED ON			A4400	Ø
					MODEL	ASS'Y. NO.	DATE		
				1	GPT-40K		11-23-65		
B7101	2								
CB7101	3								
	4	SW 271	2						
		MO 110 & SW 271	2						
	5	SW 271	2						
		MO 110 & SW 271	2						
	6	SW 271	2						
		MO 110 & SW 271	2						
	7	SW 271	2						

2	7	SCHH2520BN48	BOLT, MACH.
4	6	NTH2520BN14	NUT, HEX
4	5	LWS25MRN	WASHER, LOCK, SPLIT
4	4	FW25HBN	WASHER, FLAT
1	3	SW 271	CKT, BREAKER, MAIN
1	2	MO 110	MOTOR, BKR
1	1	LD 2026/PX 541	BOARD, BKR MTG

REQ.	ITEM	PART NO.	F. BUDETTI DESCRIPTION				SYMBOL
			THE TECHNICAL MATERIEL CORP. MAMARONECK. NEW YORK				
			CIRCUIT BREAKER ASS'Y				
			MATERIAL				
			TYPE & TEMPER	HEAT TREAT. SPEC.	DRAWN	CHECKED	FINAL APPR VAL
					ML		A4400 Ø
			FINISH & SPEC. NO.		ELEC. DES. APP.	MECH. DES. APP.	



YELLOW DOT - AT LEAST 1/8 DIA.

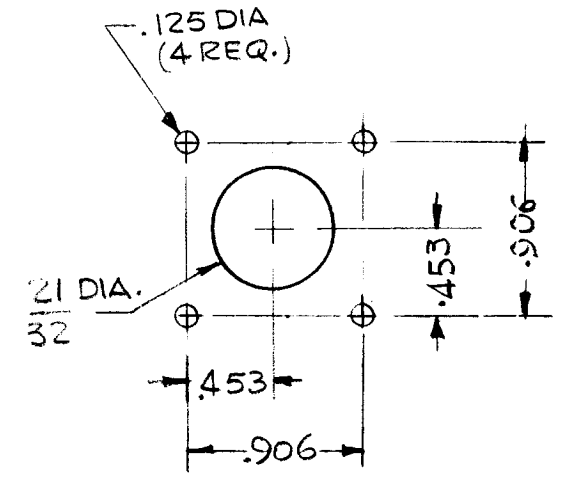
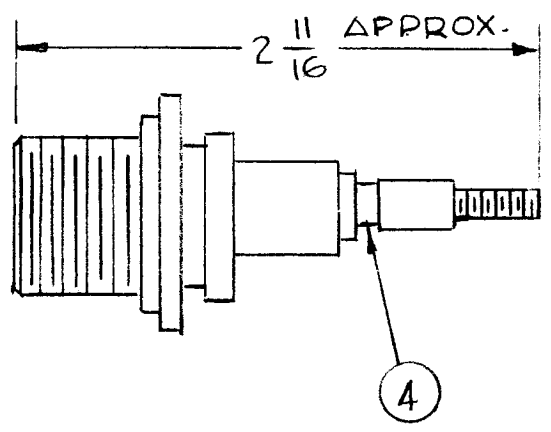
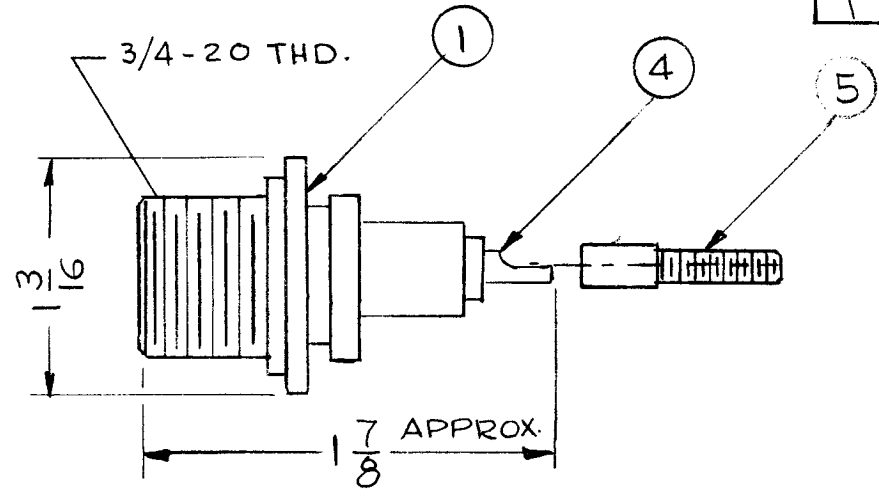
REQ. ITEM	PART NO.	DESCRIPTION	SYMBOL
16	PX-104-4-.022	INSULATION, SLEEVING	GRN
X 15	BS-100	SOLDER, SOFT	
14	PX-104-9-.022	INSULATION, SLEEVING	VNO.
13	PX-104-3-.022		RED
12	PX-104-6-.022		BLUE
11	PX-104-2-.022		YEL
X 10	PX-104-1-.022	INSULATION, SLEEVING	BLK
X 9	WL-100-7	WIRE, BUSS BAR	
2 8	CM15F111G03	CAPACITOR, FIXED	C281
2 7	CM15C56G03	CAPACITOR, FIXED	C139
2 6	CM15F151G03	CAPACITOR, FIXED	C140
3 5	A-1345	COIL ASSY.	C117
4	DELETED		L28
1 3	A-1077	COIL ASSY	L29
2 2	CL180	COIL ASSY	L30
1 1	A-1346	TERMINAL BD. SUB ASSY	L32
LONGHI		DESCRIPTION	
THE TECHNICAL MATERIEL CORP. MAMARONECK, NEW YORK			
TERN. BD. ASSEMBLY, HI PASS			
FILTER			GPR-92A
CJAD			17/31/65
DRAWN			FINAL APPROVAL
CHECKED			
ELEC. DES. APP.			
MECH. DES. APP.			
FINISH & SPEC. NO.			A4411 B

ISSUE ITEM	CHANGED FROM	DATE	CH. NO.	DRAFTS	CHECKER	ENG. APP.
B	DELG. LGTHS ON B/M; REV. LGTHS. ON PICT.	3/8/66	15862	HLA	<i>[Signature]</i>	<i>[Signature]</i>
A	REV. IT. 2, 6, 7, 8, 12 & 13	1/24/66	15622	HLA	<i>[Signature]</i>	<i>[Signature]</i>
Ø	ORIGINAL RELEASE	1/4/65	Ø	Ø	<i>[Signature]</i>	<i>[Signature]</i>

TOLERANCES: MAXIMUM ALLOWABLE TOLERANCES HAVE BEEN DETERMINED AND ANY DEVIATIONS WILL BE CAUSE FOR REJECTION. REMOVE ALL BURRS AND SHARP EDGES

DEC. DIM. ±
 FRAC. DIM. ±
 ANGULAR DIM. ±

REQ. PER UNIT	USED ON			A4413	A
	MODEL	ASS'Y. NO.	DATE		
1	RFTA-1	A 5234	1-21-66		

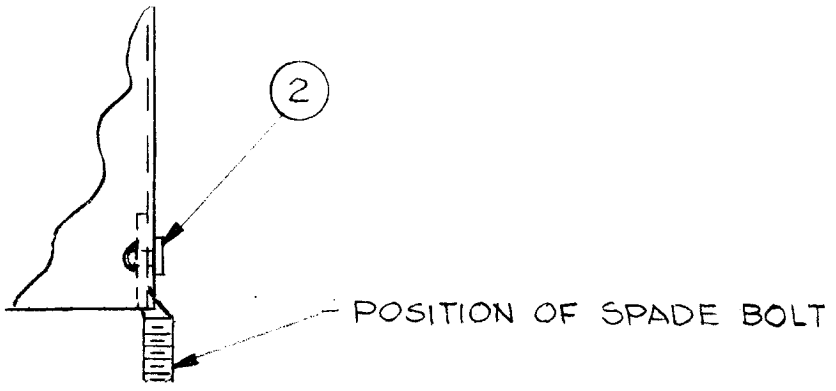
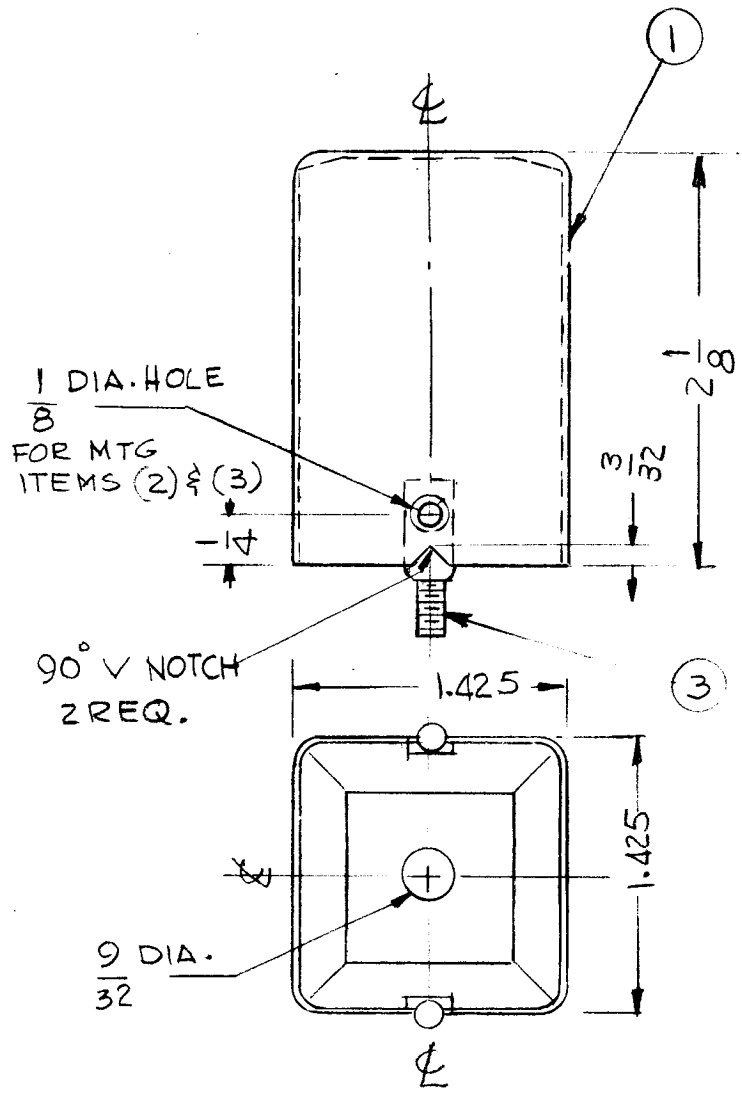


1	5	PM1203	ADAPT. CONN. RF	
3	4	BS 101-1	BRZG., ALY. SILVER	
		DELETED		
		DELETED		
1	1	UG560*10	CONNECTOR, RECP. HN	J214
REQ. ITEM	PART NO.		BUDETTI DESCRIPTION	SYMBOL

A	IT 2 & 3 DEL. IT 5 ADDED	4-2-66	16079	WUW	QC/B	QOS
Ø	ORIGINAL RELEASE FOR PRODUCTION	3-31-66	Ø	WUW		
SYM	DESCRIPTION	DATE	CH. NO.	DRAFTS	CHECKER	ENG. APP.
UNLESS OTHERWISE SPECIFIED DIMENSIONS ARE IN INCHES AND INCLUDE CHEMICALLY APPLIED OR PLATED FINISHES		SCALE DO NOT SCALE				
DECIMALS .X ± .05 .XX ± .01 .XXX ± .005	TOLERANCES	FRACTIONS ± 1/64 ANGLES ± 0° 30'	CODE			

#		THE TECHNICAL MATERIEL CORP. MAMARONECK, NEW YORK			
#		CONNECTOR ASSY., RF (4N SERIES)			
#	#	G.D.I. ^{PO. 5}	QC/B	A. H. H. [Signature]	
TYPE & TEMPER	HEAT TREAT. SPEC.	DRAWN	CHECKED	FINAL APPROVAL	
#	#	aa ^{1/2/66}		A4413 A	
FINISH & SPEC. N.		ELEC. DES. APP.	MECH. DES. APP.		

REQ. PER UNIT	USED ON			A4427	Ø
	MODEL	ASS'Y. NO.	DATE		
3	FFR-3		3-11-66		



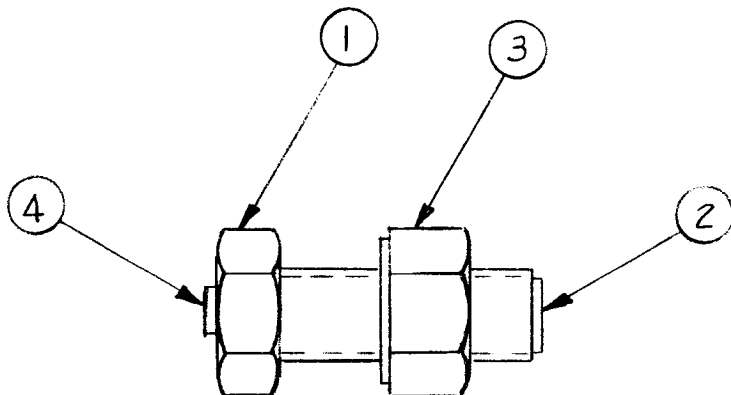
2	3	SC107-1	SPADE BOLT		
2	2	EY100-1	EYELET		
1	1	FP108-1	CAN (MODIFIED AS SHOWN)		
REQ. ITEM	PART NO.		POSE	DESCRIPTION	SYMBOL
STOCK SIZE			THE TECHNICAL MATERIEL CORP. MAMARONECK, NEW YORK		
MATERIAL			I, F. CAN ASSEMBLY		
UNLESS OTHERWISE SPECIFIED DIMENSIONS ARE IN INCHES AND INCLUDE CHEMICALLY APPLIED OR PLATED FINISHES			SCALE	1:1	
DECIMALS .X ± .05 .XX ± .01 .XXX ± .005			TOLERANCES		
FRACTIONS ± 1/64 ANGLES ± 0° 30'			CODE		
FINISH & SPEC. NO.			ELEC. DES. APP.	MECH. DES. APP.	A4427

Ø	ORIG RELEASE FOR PROB	6/2/67	Ø	CV		
SYM	DESCRIPTION	DATE	CH. NO.	DRAFTS	CHECKER	ENG. APP.

G.D.L. ³⁻¹¹⁻⁶⁶ *JCB* *Re*
 TYPE & TEMPER HEAT TREAT. SPEC. DRAWN CHECKED FINAL APPROVAL
 A4427 Ø

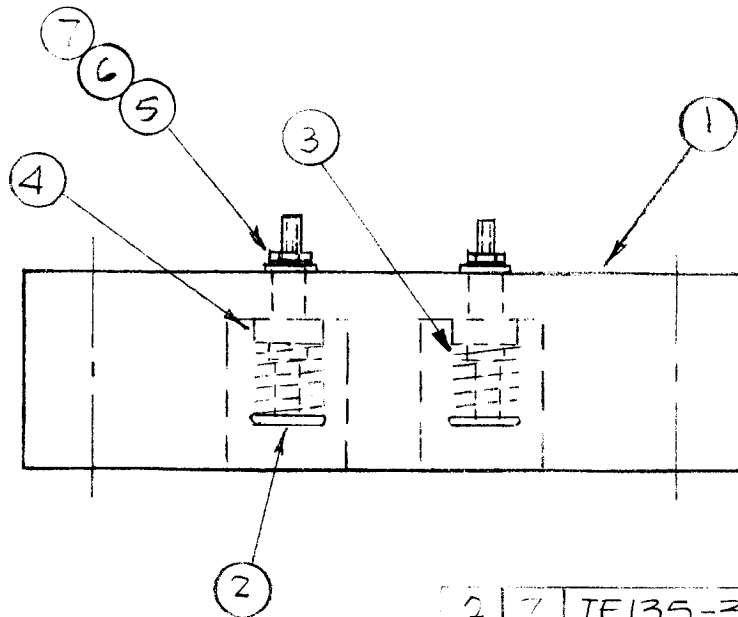
REQ. PER UNIT	USED ON		
	MODEL	ASS'Y. NO.	DATE
2	40K BASIC	AT106	3-9-66
2	KIT 285	AT106	

A4440 A



1	4	TE135-25	NUT, PLN., RD	
1	3	NT137-5013	NUT, PLN., HEX., N	
1	2	SC165-1	CONTACT, BUTTON	
1	1	SC167	SCREW MACHINE, NYLON	
REQ. ITEM	PART NO.		F. BODETTI DESCRIPTION	SYMBOL
STOCK SIZE			THE TECHNICAL MATERIEL CORP. MAMARONECK, NEW YORK	
MATERIAL			CONTACT, BUTTON ASSY	
UNLESS OTHERWISE SPECIFIED DIMENSIONS ARE IN INCHES AND INCLUDE CHEMICALLY APPLIED OR PLATED FINISHES		SCALE	1:1	
DECIMALS .X ± .05 .XX ± .01 .XXX ± .005	TOLERANCES		FRACTIONS ± 1/64 ANGLES ± 0° 30'	CODE
TYPE & TEMPER		HEAT TREAT. SPEC.	DRAWN	CHECKED
FINISH & SPEC. NO.		ELEC. DES. APP.	MECH. DES. APP.	
		G.D.L. 3-10-66		Final Approval
		A444C		A

REQ. PER UNIT	USED ON			A4441	A
	MODEL	ASS'Y. NO.	DATE		
1	40K BASIC		3-9-66		
1	KIT-285				



2	7	TE135-3	STANDOFF, SPACER	
2	6	NTH02328NB	NUT, PLAIN HEX	
2	5	FW06HBN	WASHER, FLAT	
2	4	PM1194	SPACER, CONTACT	
2	3	SPI16-S	SPRING, HEL, COMPR	
2	2	SC165-2	CONTACT, ELE. BUTTON	
1	1	LD2060/PX978	BLOCK MTG ELECT CONTACT	

A	ITEM 7 WAS LWS 06MRN	2-20-67	17829					
Ø	ORIGINAL RELEASE FOR PRODUCTION	3-22-66	Ø					
XI	ITEMS 1, 3, 5, 6, 7, 8, 9, 10, 11, 12, 13, 14, 15, 16, 17, 18, 19, 20, 21, 22, 23, 24, 25, 26, 27, 28, 29, 30, 31, 32, 33, 34, 35, 36, 37, 38, 39, 40, 41, 42, 43, 44, 45, 46, 47, 48, 49, 50, 51, 52, 53, 54, 55, 56, 57, 58, 59, 60, 61, 62, 63, 64, 65, 66, 67, 68, 69, 70, 71, 72, 73, 74, 75, 76, 77, 78, 79, 80, 81, 82, 83, 84, 85, 86, 87, 88, 89, 90, 91, 92, 93, 94, 95, 96, 97, 98, 99, 100	6/17/66						
ISSUE	ITEM	CHANGED FROM	DATE	CH. NO.	DRAFTS	CHECKER	ENG. APP.	
TOLERANCES		SCALE: 1:1						
DEC. DIM. ±		MAXIMUM ALLOWABLE TOLERANCES HAVE BEEN DETERMINED AND ANY DEVIATIONS WILL BE CAUSE FOR REJECTION. REMOVE ALL BURRS AND SHARP EDGES						
FRAC. DIM. ±								
ANGULAR DIM. ±								

REQ. ITEM	PART NO.	F. BUDETTI	DESCRIPTION	SYMBOL
THE TECHNICAL MATERIEL CORP. MAMARONECK. NEW YORK				
BLOCK & ELECT CONTACT ASSY				
MATERIAL				
TYPE & TEMPER		HEAT TREAT. SPEC.	DRAWN	CHECKED
FINISH & SPEC. NO.		ELEC. DES. APP.	MECH. DES. APP.	
				A4441
				A

A4470 Ø

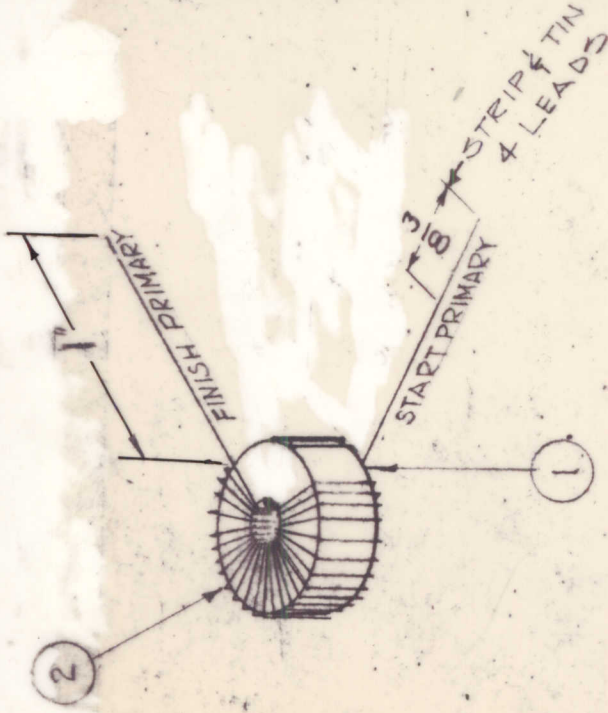
REQ. PER UNIT	MODEL	USED ON ASS'Y. NO.	DATE
1	STR-1,2		7-6-66
1	TTR-10		7-6-66
1	SMR-1		7-6-66

WINDING PROCEDURE

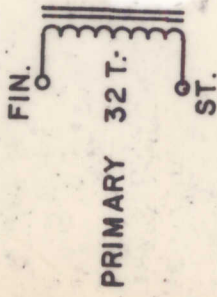
1. WIND 32 TURNS (PRI) OF ITEM 2 ON ITEM 1, CLOSE WOUND.
2. STAKE LEADS SECURELY WITH ITEM 3. (Q-MAX)
3. BAKE FOR 1/2 HOUR AT 215°F TO REMOVE MOISTURE
4. COAT COIL & CORE WITH ITEM 3 AND BAKE 1/2 HOUR AT 215°F.
5. TEST AS NOTED BELOW IN ELECTRICAL SPECIFICATIONS.

ELECTRICAL SPECIFICATIONS

STRIP & TIN ENTIRE LEAD LENGTH ALL 4 LEADS CLAMP COIL INTO Q-METER 3/8 INCH AWAY FROM START & FINISH LEAD ENDS WITH START LEAD TO LOW SIDE OF Q METER
 INDUCTANCE (PRI) L= 4.5 UHY ±.200 UHY
 MIN. Q= 200 AT 7.9 MC
 (Q METER-BOONTON 260)



— SCHEMATIC —



REQ. ITEM	PART NO.	DESCRIPTION	SYMBOL
X 4	BS-100	SOLDER, SOFT	
X 3	GL-102	ADHESIVE, Q-MAX	
X 2	WI-123-25	WIRE, MAGNET, SIZE 25	
1	CI-127-1	CORE, TOROID	
STOCK SIZE			
MATERIAL			
THE TECHNICAL MATERIEL CORP. MAMARONECK. NEW YORK			
COIL, INTERMEDIATE FREQUENCY (CL400 ASS'Y)			
TYPE & TEMPER		HEAT TREAT. SPEC.	DRAWN
FINISH & SPEC. NO.			CHECKED
			FINAL APPROVAL

Ø	DESCRIPTION	DATE	CH. NO.	DRAFTS	CHECKER	ENG. APP.
	ORIGINAL RELEASE FOR PRODUCTION	7-6-66	M	Jc	Jc	Jc
UNLESS OTHERWISE SPECIFIED DIMENSIONS ARE IN INCHES AND INCLUDE CHEMICALLY APPLIED OR PLATED FINISHES						
TOLERANCES						
DECIMALS	FRACTIONS					
.X ± .05	± 1/64					
.XX ± .01	ANGLES ± 0° 30'					
.XXX ± .005	A					
DO NOT SCALE						

A4470 Ø