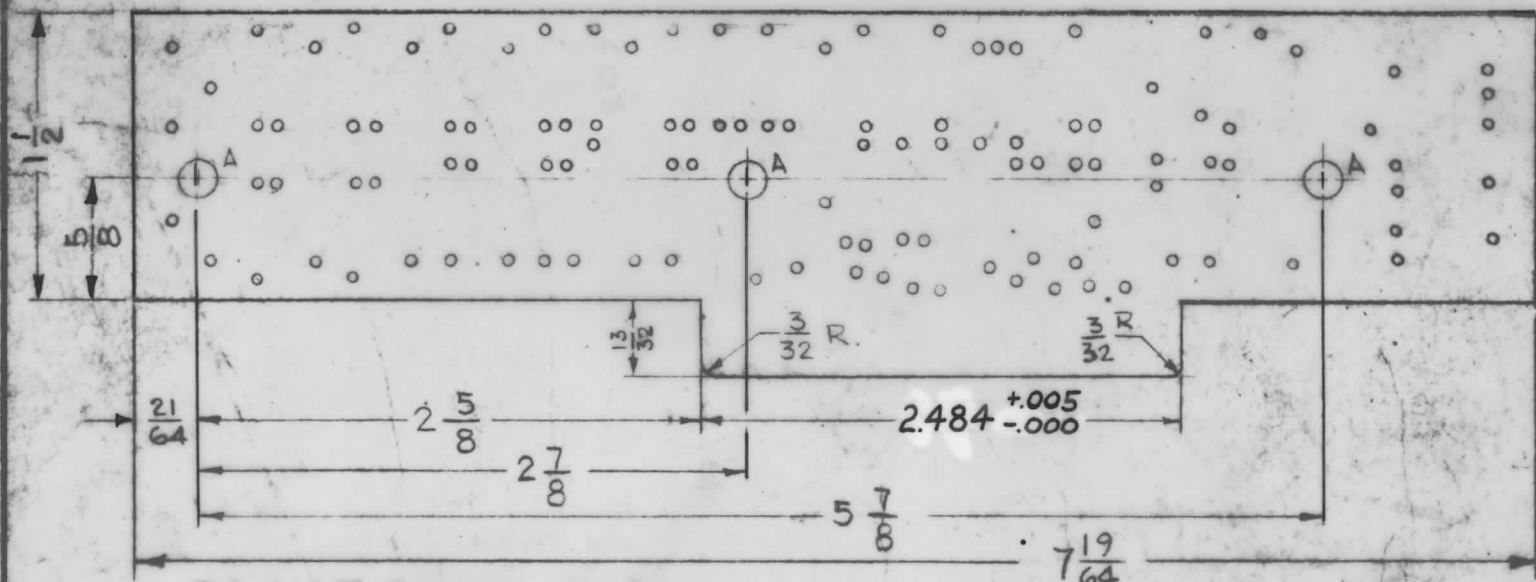


A4368  
 1 set of Positives  
 Out to M. Palladino  
 Taken By  
 J. Massi

ORIGINAL ARTWORK TO BE REMOVED FROM PROTECTIVE POCKETS WHEN PHOTOGRAPHING.



DO NOT SCALE DWG.  
 MACHINING  
 A4368-2

A	MSA-1	AX469
Q'TY./UNIT	MODEL USED ON	ASSY. NO.
SCALE 1:1	CODE A	

NOTES

THE CONTENTS OF THIS DRAWING ARE THE EXCLUSIVE PROPERTY OF THE TECHNICAL MATERIEL CORP. ITS UNAUTHORIZED USE OR REPRODUCTION IN WHOLE OR IN PART IS STRICTLY FORBIDDEN.

REVISIONS					
SYM	DESCRIPTION	DATE	E.M.N. NO.	DRAFT	CHKD APPD
Ø	ORIGINAL RELEASE FOR PROD	10/26	Ø		
A	2.484 WAS 2 1/2	3-31-67	18071	L.A.K	<i>[Signature]</i>

ORIGINAL ARTWORK TO BE REMOVED FROM PROTECTIVE POCKETS WHEN PHOTOGRAPHING.

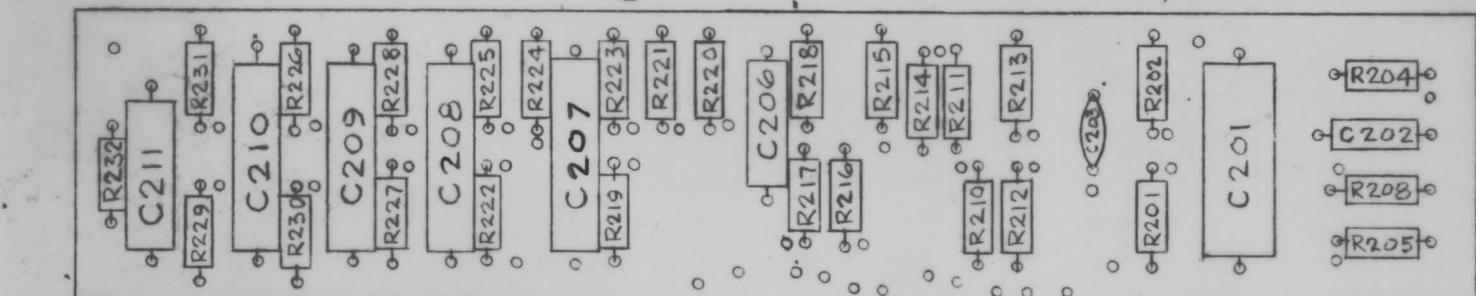
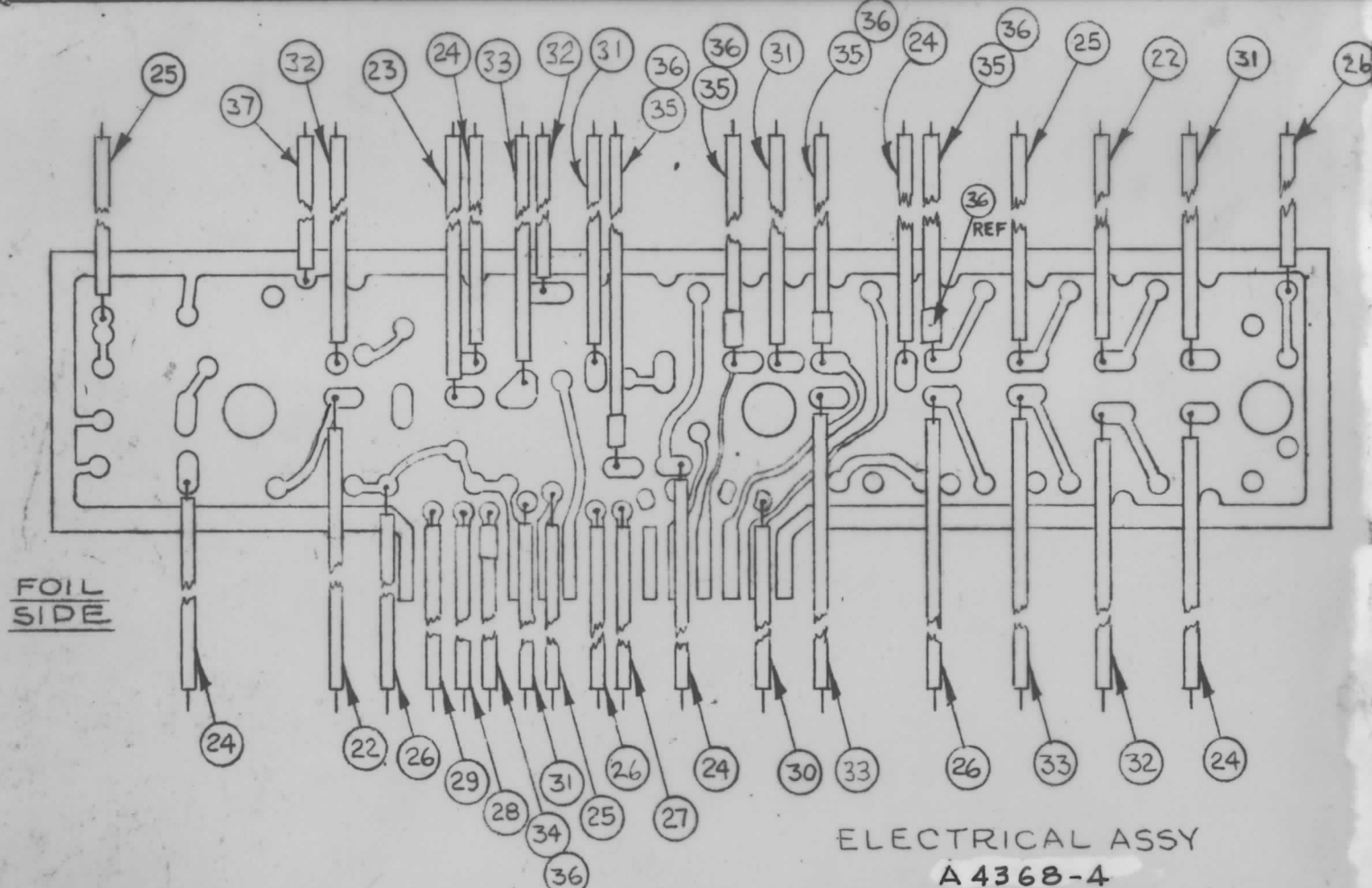
HOLE & PAD SPEC.			
HOLE	DIA.	PAD DIA	REQ'D
UNMARKED	.052	.130	.116
A	.189	.250	3

NOTES: TO BE MANUFACTURED IN ACCORDANCE WITH TMC SPEC. S-735, UNLESS OTHERWISE SPECIFIED.

- MATERIAL: G-10 EPOXY GLASS LAMINATE, 1/16 THICK. 2-OUNCE COPPER CLAD, BOTH SIDES.
- ALL PADS ON PRINTED CIRCUIT SIDE MUST ALSO APPEAR ON COMPONENT SIDE IN EXACT SIZE AND REGISTER.
- ALL UNMARKED HOLES ARE TO BE PLATE-THRU WITH A MINIMUM COPPER PLATING THICKNESS OF .0015. PLATE .0003 TO .0005 NICKEL AND 25 MILLIONTHS MINIMUM OF GOLD ALL ETCHED SURFACES AND PLATE-THRU HOLES.
- CONDUCTOR WIDTH: .046 MIN., .062 MAX. SPACE BETWEEN CONDUCTORS .031 MIN.

ORIGINAL ARTWORK TO BE SUPPLIED BY TMC FOR PHOTOGRAPHING (SCALE 1-1)

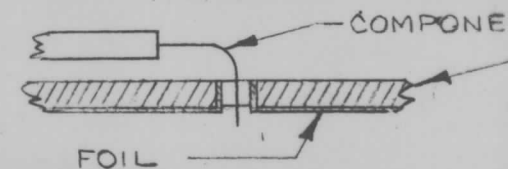
REQ'D	ITEM	PART NUMBER	DESCRIPTION	SYMBOL
POSE LIST OF MATERIAL				
MATERIAL		THE TECHNICAL MATERIEL CORP. MAMARONECK, NEW YORK		
FINISH		TITLE PRINTED CIRCUIT BOARD ASSY (PLUG-IN AUDIO AMPLIFIER)		
UNLESS OTHERWISE SPECIFIED DIMENSIONS ARE IN INCHES AND INCLUDE CHEMICALLY APPLIED OR PLATED FINISHES		DRAWN G.D.L	DATE 10-22-65	FINAL APPROVAL <i>[Signature]</i> DATE 10/26/65
DECIMALS .X ± .05 .XX ± .01 .XXX ± .005		CHECKED <i>[Signature]</i>	DATE 10/25/65	
FRACTIONS ± 1/64 ANGLES ± 0° 30'		ELECT. DES.	DATE	
TOLERANCES		MECH. DES.	DATE	
		A4368		A
		SHEET 1 OF 2		REV. LTR.



FUNGUS PROOFING PER TMC SPECIFICATION S-113

ASSEMBLY NOTICE

1. TO MOUNT COMPONENTS, INSERT LEAD THRU PLATED - THRU HOLES & BEND ABOUT 1/16 OF LEAD OVER COPPER FOIL AS SHOWN.
2. APPLY HEAT TO LEAD AND FOIL, SOLDER. CAUTION: TOO MUCH HEAT WILL CAUSE FOIL TO SEPARATE FROM THE BOARD.
3. CLEAN & INSPECT PER TMC SPEC. S-676



COMPONENT SIDE (SEE SHEET 1 OF 2 FOR ORIENTATION)  
SUB-ASSY  
A 4368-3

NOTES

4	MSA-1	AX469
Q'TY./UNIT	MODEL USED ON	ASSY. NO.
SCALE	CODE	
1:1	A	
THE CONTENTS OF THIS DRAWING ARE THE EXCLUSIVE PROPERTY OF THE TECHNICAL MATERIEL CORP. ITS UNAUTHORIZED USE OR REPRODUCTION IN WHOLE OR IN PART IS STRICTLY FORBIDDEN.		

A4368

REVISIONS					
SYM	DESCRIPTION	DATE	E.M.N. NO.	DRAFT	CHKD APPD
0	ORIGINAL RELEASE FOR PROD	10/26/65			
A	SEE SHEET 1 OF 2	3-31-67	18071	LAK	

QTY	SYM	PART NUMBER	DESCRIPTION	SYMBOL
1	38	CM15C47K	CAP FXD, MICA	C201
11	37	LWC 26 (7) U0	WIRE, ELECTRICAL, INSULATED	BLK
5	36	PX830-14-1	INS. SLEEVING, SHRINK	BLK
44	35	MWC22 (7) SJ5	CABLE, SP., SHLD/JKT	GRN
11	34	MWC22 (7) SJ1	CABLE, SP., SHLD/JKT	BRN
22	33	LWC26 (7) U96	WIRE, ELECTRICAL, INSULATED	WHT/BLU
11	32	U95		WHT/GRN
22	31	U94		WHT/YEL
11	30	U92		WHT/RED
11	29	U91		WHT/BRN
11	28	U1		BRN
11	27	U7		VIO
44	26	U6		BLU
55	25	U5		GRN
88	24	U4		YEL
11	23	U3		ORN
11	22	LWC26 (7) U2	WIRE, ELECTRICAL, INSULATED	RED
1	21	RC20GF82 1J	RESISTOR, FIXED, COMPOSITION	R205
2	20	683J		R219
3	19	474J		R232
3	18	472J		
1	17	470J		R202
1	16	391J		R215
1	15	332J		R224
1	14	273J		R201
1	13	224J		R210
1	12	223J		R212
1	11	222J		R221
2	10	152J		R216
4	9	105J		R218
2	8	104J		R222
4	7	RC20GF102J	RESISTOR, FIXED, COMPOSITION	R204
1	6	CN112-254M1	CAPACITOR, FIXED, MET.	C211
4	5	CN100-9	CAPACITOR, FIXED, MET.	
1	4	CM15C101J	CAPACITOR, FIXED, ELECTRIC	C202
1	3	CE105-1-25	CAPACITOR, FIXED, ELECTRIC	C206
1	2	CC100-35	CAPACITOR, FIXED, DISC	C203
3	1	TE-108-1BC	STANDOFF, RIVET TYPE	

R230  
R228  
R214

R208  
R226  
R227

R225  
R223  
R216  
R211

R213  
R220  
R229  
R231

C207  
C208  
C209  
C210

REQ'D.	ITEM	PART NUMBER	DESCRIPTION	SYMBOL
--------	------	-------------	-------------	--------

POSE		LIST OF MATERIAL			
MATERIAL		THE TECHNICAL MATERIEL CORP.			
FINISH		MAMARONECK, NEW YORK			
		TITLE PRINTED CIRCUIT BOARD ASSY PLUG-IN AUDIO AMPLIFIER			
UNLESS OTHERWISE SPECIFIED DIMENSIONS ARE IN INCHES AND INCLUDE CHEMICALLY APPLIED OR PLATED FINISHES		DRAWN G.D.L.	DATE 10-22-65	FINAL APPROVAL <i>[Signature]</i>	
DECIMALS .X ± .05 .XX ± .01 .XXX ± .005		CHECKED <i>[Signature]</i>	DATE 10/25/65	DATE 10/26/65	
FRACTIONS ± 1/64 ANGLES ± 0° 30'		ELECT. DES.	DATE	A4368	
TOLERANCES		MECH. DES.	DATE	SHEET 2 OF 2	
				REV. LTR.	