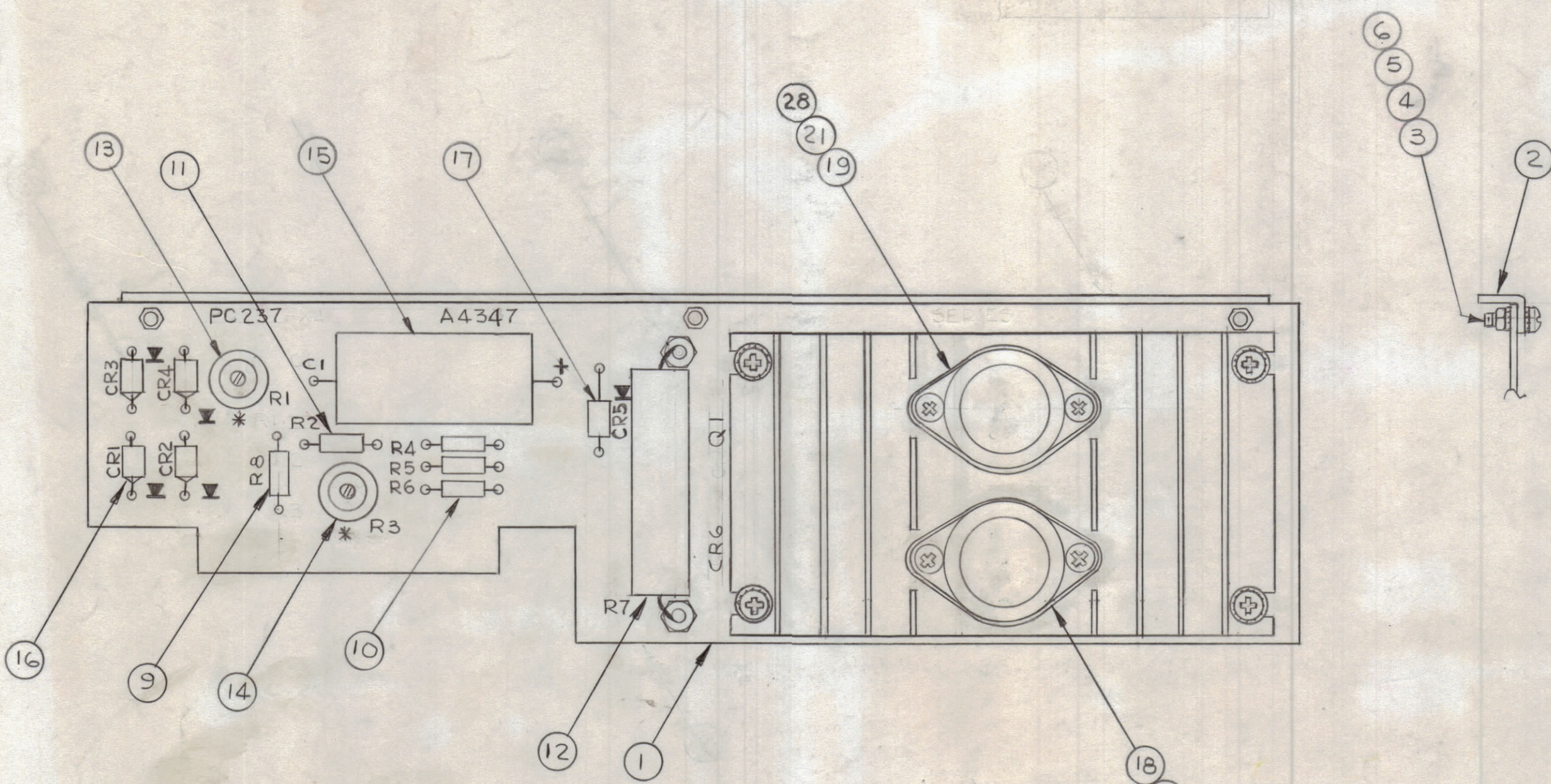
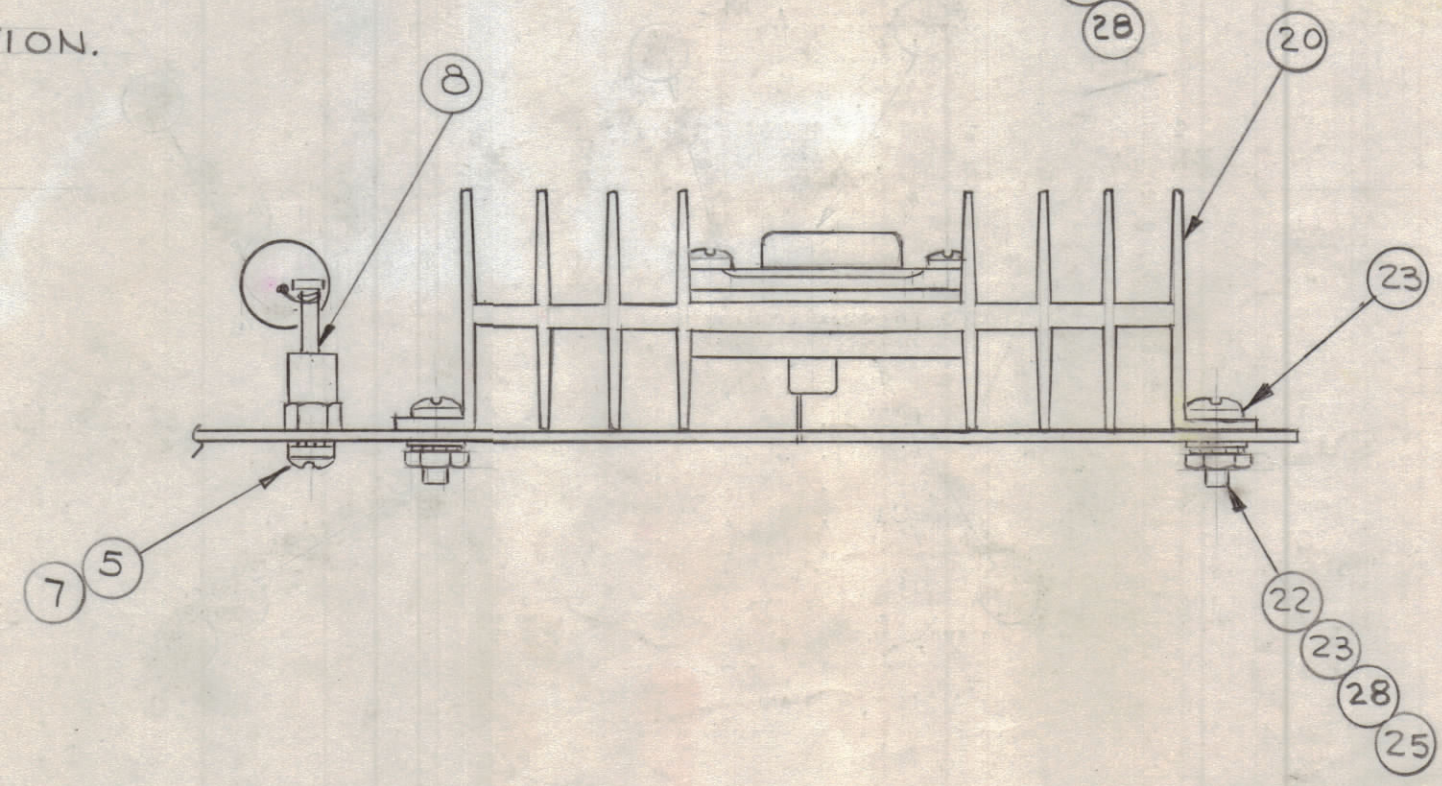


REVISIONS							
ZONE	SYM	DESCRIPTION	DATE	E.M.N. NO.	DRAFT	CHKD	APPD
X		EXP. RELEASE	8/25/66			GDL	
Ø		ORIGINAL RELEASE FOR PRODUCTION	8/27/66	Ø		RME	
A		ADDED NOTE 6. (IT. 28 ADDED)	1-27-69	19268		KD	JLQ EFH



* DENOTES WIPER CONNECTION.



SEE NOTE 6

REQ'D	ITEM	PART NUMBER	DESCRIPTION	SYMBOL
4	28	LW106MRN	LOCKWASHER, INT.	
X	27	BS100	SOLDER, TIN ALLOY	
X	26	WL100-6	WIRE, ELEC, BUSS	
4	25	NTH0632BN5	NUT, HEXAGON	
4	24	LWE06MRN	LOCKWASHER, EXTERNAL	
8	23	FW06LBN	WASHER, FLAT	
4	22	SCBP0632BN4	SCREW, MACHINE	
4	21	SCBP0632BN10	SCREW, MACHINE	
1	20		HEAT SINK	
1	19		TRANSISTOR	Q1
1	18		SEMICONDUCTOR DEV, DIODE	CR6
1	17		SEMICONDUCTOR DEV, DIODE	CR5
4	16		SEMICONDUCTOR DEV, DIODE	CR1 TO 4
1	15		CAPACITOR, FXD, ELECT	C1
1	14		RESISTOR, VAR, COMP	R3
1	13		RESISTOR, VAR, COMP	R1
1	12		RESISTOR, FXD, WW-10W	R7
1	11		RESISTOR, FXD, COMP	R2
3	10		RESISTOR, FXD, COMP	R4, 5, 6
1	9		RESISTOR, FXD, COMP	R8
2	8	TE102-3	TERM, STUD	
2	7	SCBP0440BN4	SCREW, MACHINE	
3	6	NTH0440BN6	NUT, HEXAGON	
5	5	LWE04MRN	LOCKWASHER, EXTERNAL	
3	4	FW04HBN	WASHER, FLAT	
3	3	SCBP0440BN5	SCREW, MACHINE	
1	2	MS4878	STIFFENER	
1	1	PC237	BOARD, PRINTED CIRCUIT	

6- FOR ELEC. COMP PART NO'S. REFER TO NPL A-4347. SYMBOL NO'S. TO BE USED AS ASSY. REFERENCE.

ASSEMBLY NOTE:
 1- TO MOUNT COMPONENTS, INSERT LEAD THROUGH PLATED THRU-HOLES.
 2- USE CAUTION WHEN APPLYING HEAT & SOLDER TO LEAD & FOIL -
 3- CLEAN & INSPECT AS PER 5-676
 4- REF: CK1198
 5- SYMBOL SERIES 100

NOTES

CFA-2	
Q'TY./UNIT	MODEL USED ON
SCALE 1:1	CODE A
ASS'Y. NO.	

THE CONTENTS OF THIS DRAWING ARE THE EXCLUSIVE PROPERTY OF THE TECHNICAL MATERIEL CORP. ITS UNAUTHORIZED USE OR REPRODUCTION IN WHOLE OR IN PART IS STRICTLY FORBIDDEN.

UNLESS OTHERWISE SPECIFIED DIMENSIONS ARE IN INCHES AND INCLUDE CHEMICALLY APPLIED OR PLATED FINISHES				DRAWN G.D.L		DATE 8-25-66		FINAL APPROVAL		DATE 9/24/66	
DECIMALS .X ± .05 .XX ± .01 .XXX ± .005				FRACTIONS ± 1/64		ELECT. DES. G.D. Swadlow		DATE 8-22-66		A 4347	
TOLERANCES ANGLES ± 0° 30'				MECH. DES.		DATE		SHEET		REV. LTR.	

A4347