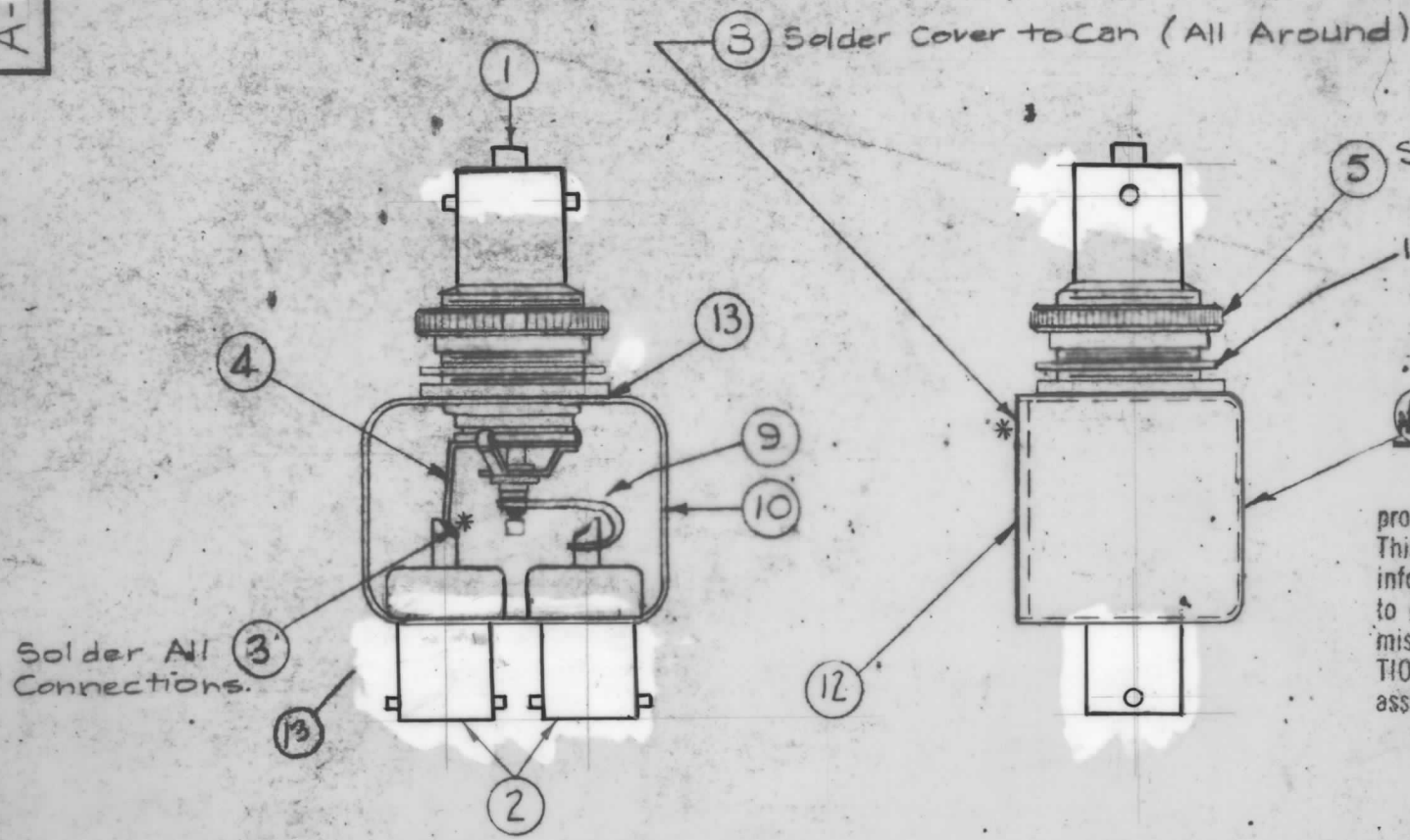


A-4342



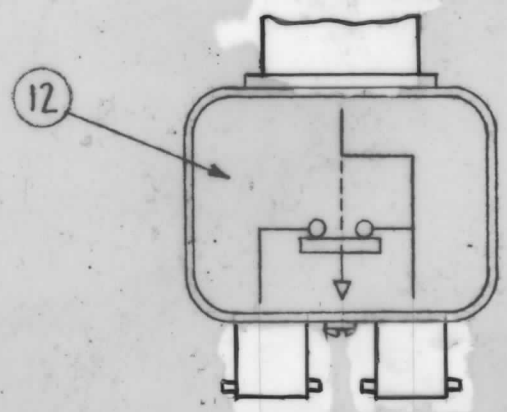
Solder All Connections.

SEE ASSY. PROCEDURE #8
INTERNAL LOCKWASHER
P/O ITEM (1).

NOTICE TO PERSONS RECEIVING THIS DRAWING

THE TECHNICAL MATERIEL CORPORATION claims proprietary right in the material disclosed hereon. This drawing is issued in confidence for engineering information only and may not be reproduced or used to manufacture anything shown hereon without permission from THE TECHNICAL MATERIEL CORPORATION to the user. This drawing is loaned for mutual assistance and is subject to recall at any time.

Property of:
THE TECHNICAL MATERIEL CORPORATION
MAMARONECK, NEW YORK



NOTES:

- 1- INDUCTION HEATING EQUIPMENT SET AT:
AMPERES-
SECONDS-
- 2- USE ITEM (13) FOR MOUNTING ITEM (1) & ITEM 2.
- 3- USE ITEM (3) FOR SEALING COVER ITEM (10).
- 4- STRAP ITEM (9) MUST BE KEPT AS FLEXIBLE AS POSSIBLE. DO NOT ALLOW SOLDER TO RUN OVER STRAP. LAY STRAP IN SO THAT IT CANNOT TOUCH CAN OR CONNECTOR BODIES.
- 5- FINISH AS FOLLOWS:
S-114 - ZINC CHROMATE PRIMER.
S-115 - TMC SMOOTH GRAY ENAMEL.
(DO NOT PAINT CONNECTOR BODIES.)
- 6- AFFIX ITEM (12) TO FRONT AS SHOWN.
- 7- AFFIX ITEM (11) TO REAR AS SHOWN.
- 8- REPLACE NT-125 P/O JJ-309 (ITEM (1)) WITH (ITEM (5)) NT-127.
- 9- * -DENOTES SOLDER ALL AROUND.

X	13	BS-100-2	Solder, TIN ALLOY
1	12	NP-226-1	SCHEMATIC DIAGRAM
1	11	NP-488	TMC, NAME PLATE
1	10	BX-154-1	Can & Cover
1	9	MS-1769	strap, Connecting
2	8		Deleted (was NTH0632BCB)
	7		
	6		
1	5	NT-127	SCREW, NUT, KNURLED
X	4	WL-100-5	WIRE, BUSS BAR #10
X	3	BS-100	SOLDER, TIN ALLOY
2	2	JJ-255	Connector, Receptacle
1	1	JJ-309	Connector, Receptacle, Switch Type

A	(T3 WAS BS100-2. IT10 WAS BS154 IT13 WAS BS106-4)	4-19-66	16102	WPD	CPB	MMK
Ø	ORIGINAL RELEASE FOR PRODUCTION	9/3/65	Ø	AVV		
ISSUE	ITEM	CHANGED FROM	DATE	CH. NO.	DRAFTS	CHECKER
TOLERANCES			SCALE:			
DEC. DIM. ±			MAXIMUM ALLOWABLE TOLERANCES HAVE BEEN DETERMINED AND ANY DEVIATIONS WILL BE CAUSE FOR REJECTION.			
FRAC. DIM. ±			REMOVE ALL BURRS AND SHARP EDGES			
ANGULAR DIM. ±						

1	SW401				
REQ. PER UNIT	MODEL	PROJECT NO.	ASSY. NO.	DATE	USED ON

THE TECHNICAL MATERIEL CORP. MAMARONECK, NEW YORK	
FINAL ASSY. SW-401	
TYPE & TEMPER.	HEAT TREAT. SPEC.
See Note.	
FINISH & SPEC. NO.	ELEC. DES. APP. MECH. DES. APP.
	CPB MMK
	A-4342