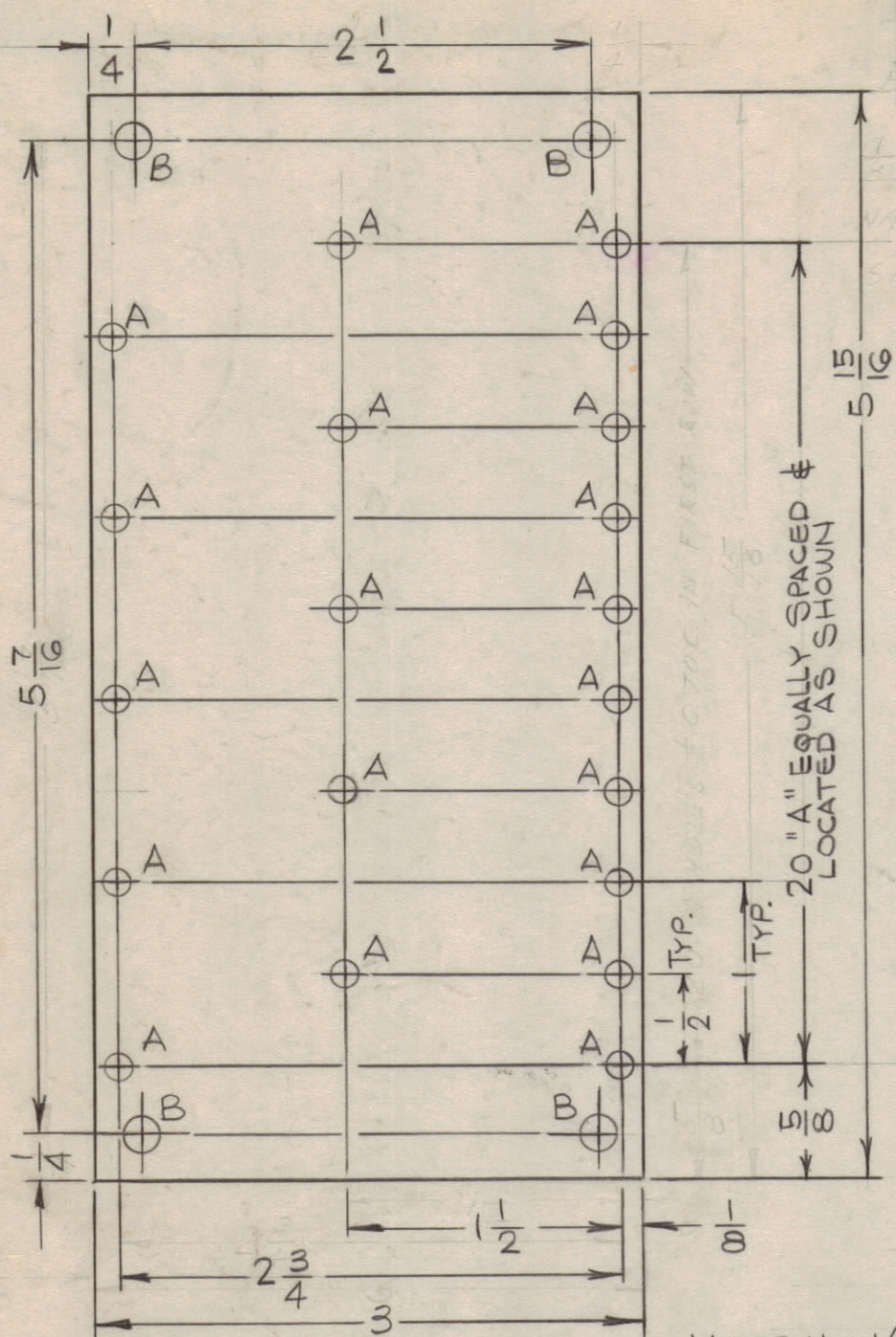


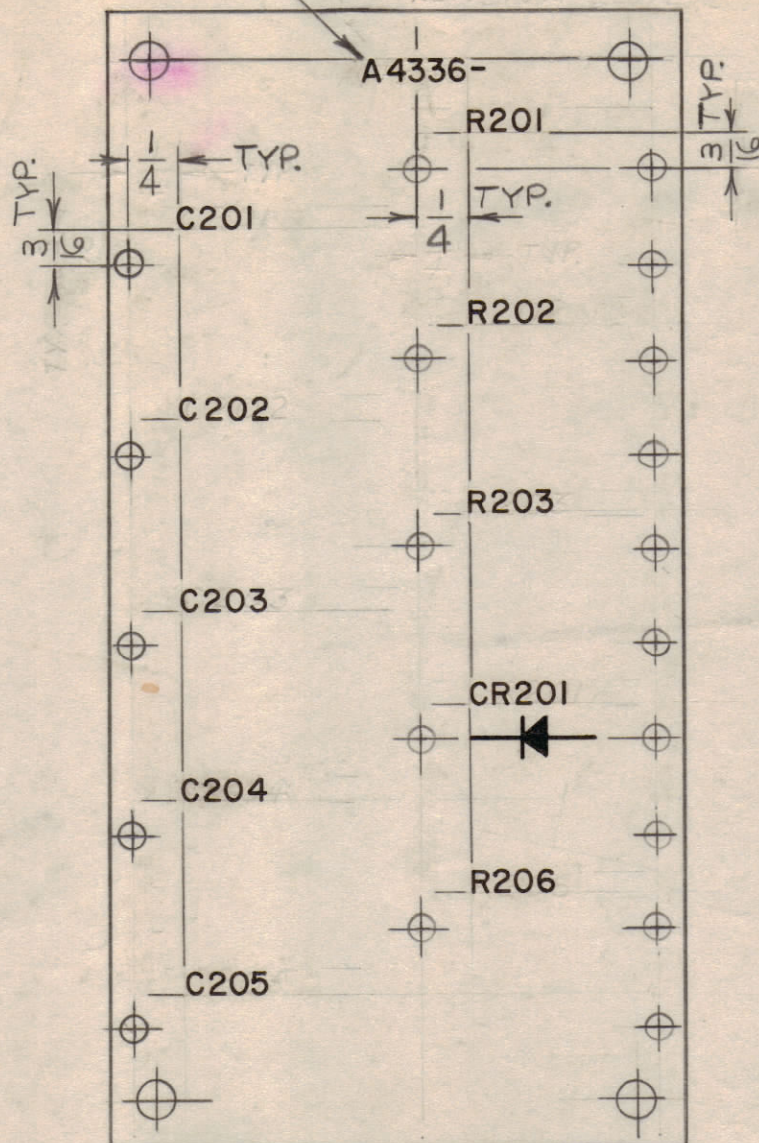
HOLE	DESCRIPTION	REQ.
A	.116 DIA.	20
B	.189 DIA.	4



A4336-1
MACHINING

MATERIAL: 1/8 XXXP PHENOLIC
FINISH: NATURAL

MARK TMC PART NO. 1/8 HIGH GOTHIC
W/LATEST REV. LETTER



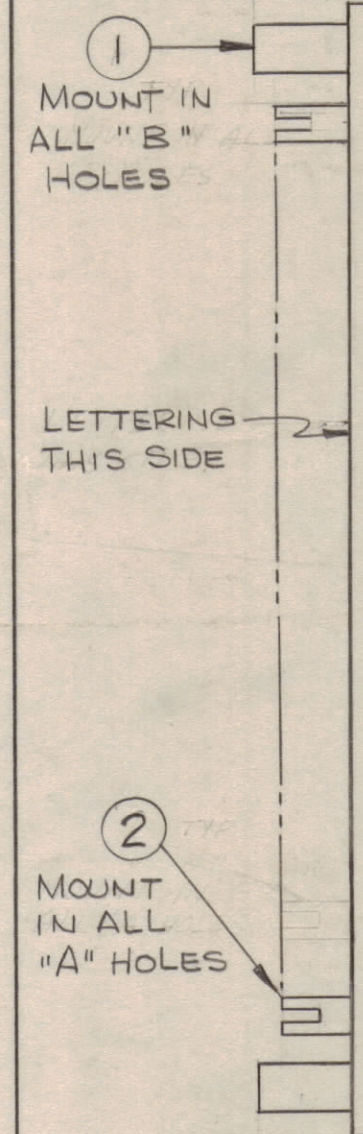
MARKING PROCESS: AS PER TMC SPECIFICATION S-727.

LETTERING: 1/8 HIGH BLACK GOTHIC, LOCATED AS SHOWN.

FUNGUS PROOFING PER
TMC SPECIFICATION S-113

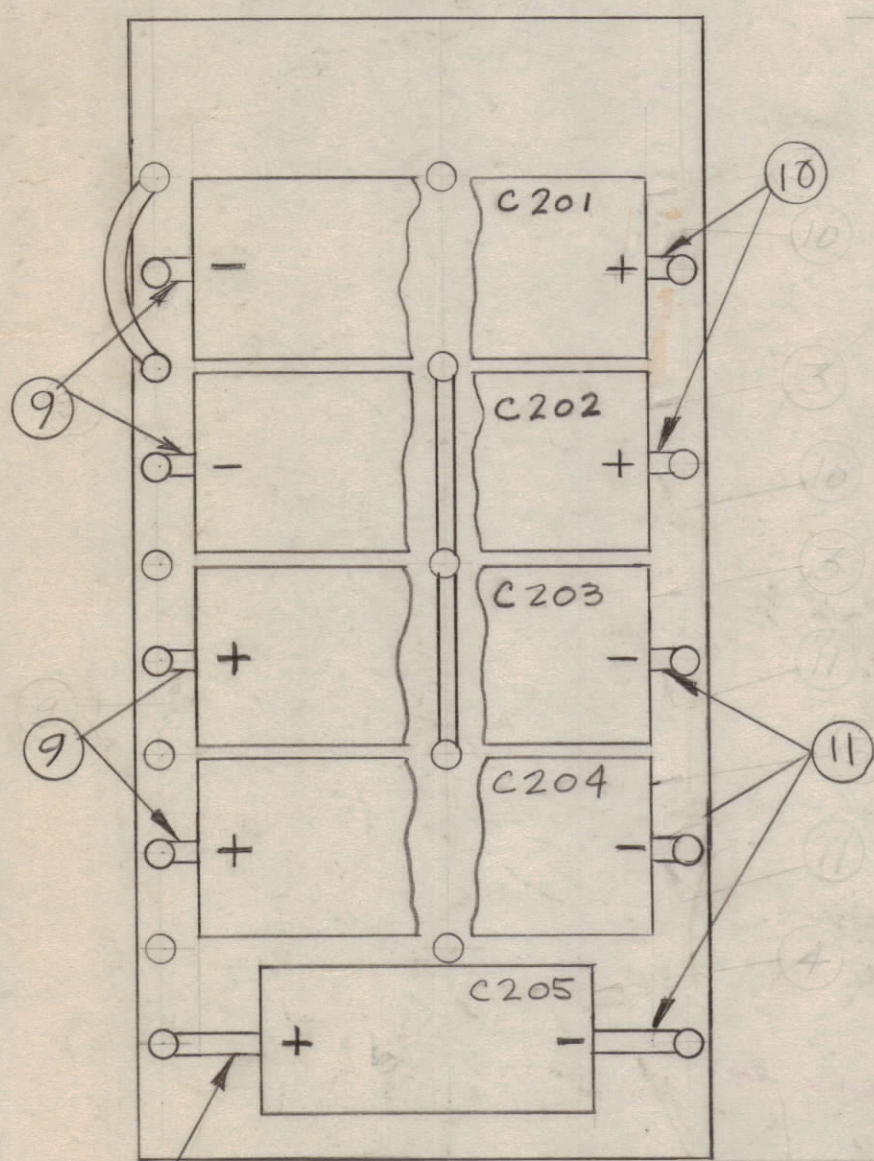
A4336-2 LETTERING

REVISIONS							
ZONE	SYM	DESCRIPTION	DATE	E.M.N. NO.	DRAFT	CHKD	APPD
	X1	Item 1 was TE108-16, Item 2 was TE109-2, Material was 3/32	11/29/65		PLM		
	X2	Completed Stage II & IV	1/24/65		PLM		
	X3	DESCRIPTIONS ADDED TO MAT'L LIST	9/21/65		H.A.		
	X4	PICTORIAL A4336-4 CLARIFIED	11-1-65		C.D.L.		
		ORIGINAL RELEASE FOR PRODUCTION	11-12-65		R.V.		



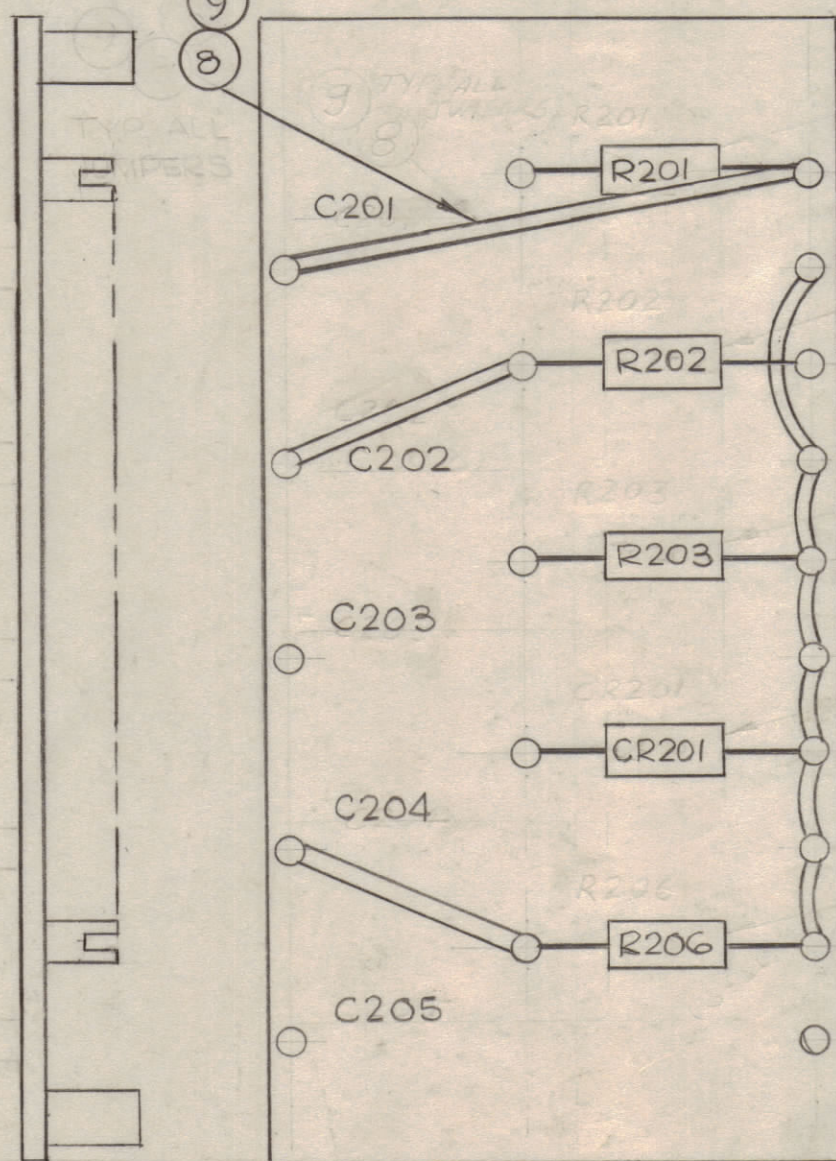
A4336-3
SUB-ASS'Y.

BOTTOM VIEW



A4336-4
FINAL ASS'Y.

TYP. ALL JUMPERS
TOP VIEW



NOTES

1	RARB-1/RASB-1	A5123
Q'TY./UNIT	MODEL USED ON	ASS'Y. NO.
SCALE	CODE	
1:1		

THE CONTENTS OF THIS DRAWING ARE THE EXCLUSIVE PROPERTY OF THE TECHNICAL MATERIEL CORP. ITS UNAUTHORIZED USE OR REPRODUCTION IN WHOLE OR IN PART IS STRICTLY FORBIDDEN.

REQ'D.	ITEM	PART NUMBER	DESCRIPTION	SYMBOL
X	12	BS100	SOLDER, TIN ALLOY	
2"	11	PX104-4-034	INSULATION, SLEEVING	
2"	10	PX104-3-034	INSULATION, SLEEVING	
13"	9	PX104-1-034	INSULATION, SLEEVING	
20"	8	WL100-G	WIRE, ELECT, BUSS	
1	7	IN3022B	SEMI COND. DEV., DIODE	CR 201
2	6	RC32GF102K	RESISTOR, FIXED, COMP	R203
2	5	RC32GF560K	RESISTOR, FIXED, COMP	R206
1	4	CE11G-4VN	CAP, FIXED, ELECT.	R201
4	3	CE11G-5VN	CAP, FIXED, ELECT.	R202
20	2	TE109-3	TERMINAL, STUD	C205
4	1	TE108-22	STANDOFF, RIVET TYPE	

LANGER		LIST OF MATERIAL REF: SK10055	
MATERIAL		THE TECHNICAL MATERIEL CORP. MAMARONECK, NEW YORK	
FINISH		TITLE TERMINAL BOARD ASS'Y., POWER SUPPLY	
UNLESS OTHERWISE SPECIFIED DIMENSIONS ARE IN INCHES AND INCLUDE CHEMICALLY APPLIED OR PLATED FINISHES	DRAWN PLM	DATE 11/29/65	FINAL APPROVAL [Signature]
DECIMALS .X ± .05 .XX ± .01 .XXX ± .005	TOLERANCES	DATE 10-10-65	DATE 11/24/65
FRACTIONS ± 1/64 ANGLES ± 0° 30'		DATE 11-12-65	DATE
		MECH. DES. [Signature]	DATE
		DATE	DATE
		SHEET	REV. LTR.

A4336