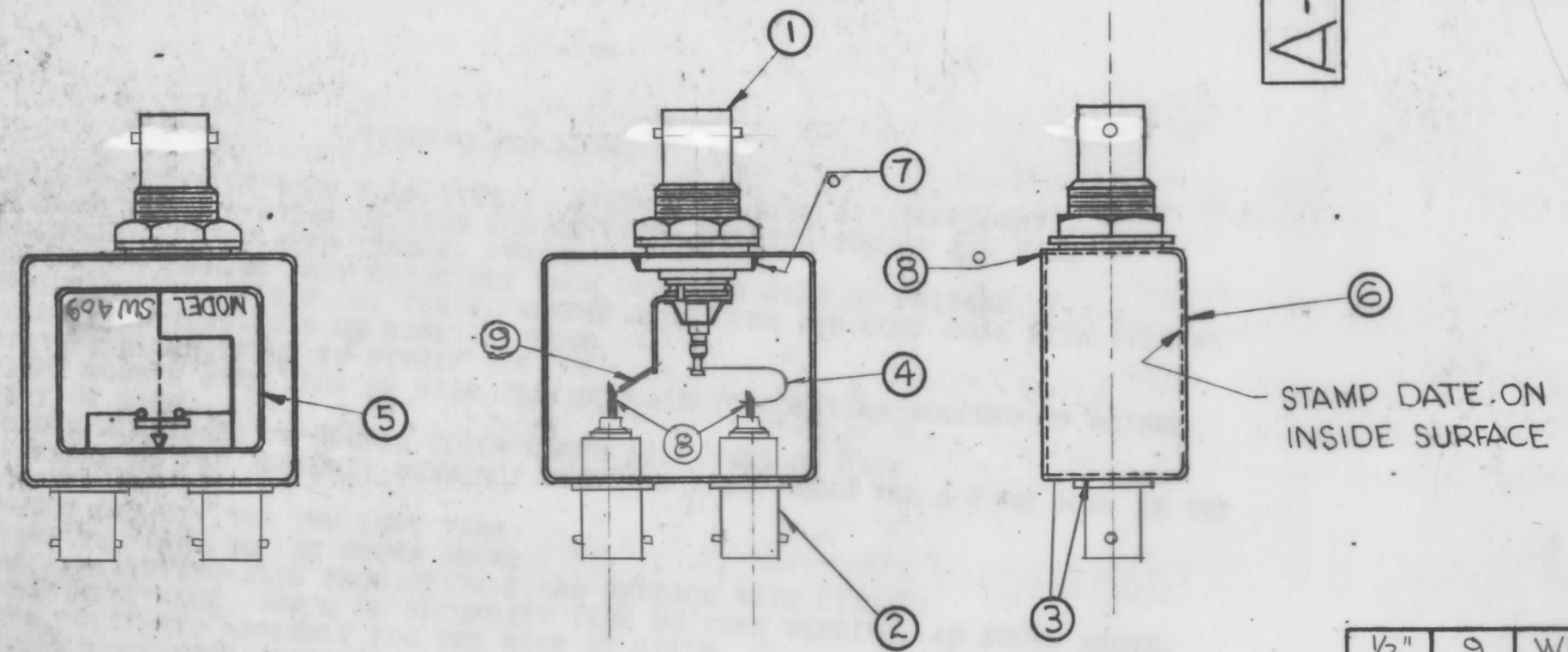


A-4334

REVISIONS

SYM	DESCRIPTION	DATE	E.M.N. NO.	DRAFT	CHKD	APPD
	ORIGINAL RELEASE FOR PRODUCTION	8-17-65	H	E		
A	IT 3 WAS BX199 IT 7 WAS BS106-4 IT 8 WAS BS106-2	4-19-66	16102	WFO		



- INDUCTION HEATING EQUIPMENT SET AT:  
AMPERES -  
SECONDS -
- USE ITEM SEVEN(7) FOR MOUNTING ITEMS ONE(1) AND TWO(2).
- USE ITEM EIGHT(8) FOR SEALING COVER ITEM THREE(3).
- STRAP (ITEM 4) MUST BE KEPT AS FLEXIBLE AS POSSIBLE. DO NOT ALLOW SOLDER TO RUN OVER STRAP. LAY STRAP IN SO THAT IT CANNOT TOUCH CAN OR CONNECTOR BODIES.
- FINISH AS FOLLOWS:  
S-114 - ZINC CHROMATE PRIMER  
S-115 - TMC SMOOTH GREY ENAMEL  
(DO NOT PAINT CONNECTOR BODIES.)
- AFFIX ITEM FIVE(5) TO FRONT AS SHOWN.
- AFFIX ITEM SIX(6) TO REAR AS SHOWN.

○ DENOTES SOLDER ALL AROUND  
NOTES

Q'TY./UNIT	MODEL USED ON	ASS'Y. NO.
SCALE	CODE	
DO NOT SCALE		
THE CONTENTS OF THIS DRAWING ARE THE EXCLUSIVE PROPERTY OF THE TECHNICAL MATERIEL CORP. ITS UNAUTHORIZED USE OR REPRODUCTION IN WHOLE OR IN PART IS STRICTLY FORBIDDEN.		

REQ'D.	ITEM	PART NUMBER	DESCRIPTION	SYMBOL
1/2"	9	WL-100-5	WIRE BUSS-BAR # 18	
X	8	BS-100	SOLDER	
X	7	BS-100-2	SOLDER	
1	6	NP-488	NAMEPLATE IDENTIFICATION (FOIL CAL.)	
1	5	NP-489-6	SCHEMATIC, DIAGRAM (FOIL CAL.)	
1	4	MS-2983	STRAP, FLEXIBLE CONNECTOR	
1	3	BX-199-1	CASE, COVER	
2	2	JJ-249	ADAPTOR, CONNECTOR	
1	1	JJ-325	ADAPTOR, CONNECTOR	

MATERIAL		THE TECHNICAL MATERIEL CORP. MAMARONECK, NEW YORK	
SEE LIST		TITLE SW-409 ASSEMBLY	
FINISH SEE NOTE NO.5		DRAWN <i>A</i> DATE 8/13/65	
UNLESS OTHERWISE SPECIFIED DIMENSIONS ARE IN INCHES AND INCLUDE CHEMICALLY APPLIED OR PLATED FINISHES		CHECKED DATE	
DECIMALS .X ± .05 .XX ± .01 .XXX ± .005		ELECT. DES. DATE	
FRACTIONS ± 1/64 ANGLES ± 0° 30'		MECH. DES. DATE 8-13-65	
TOLERANCES		FINAL APPROVAL <i>A 4334</i>	
		DATE 8/17/65	
		SHEET	
		REV. LTR.	