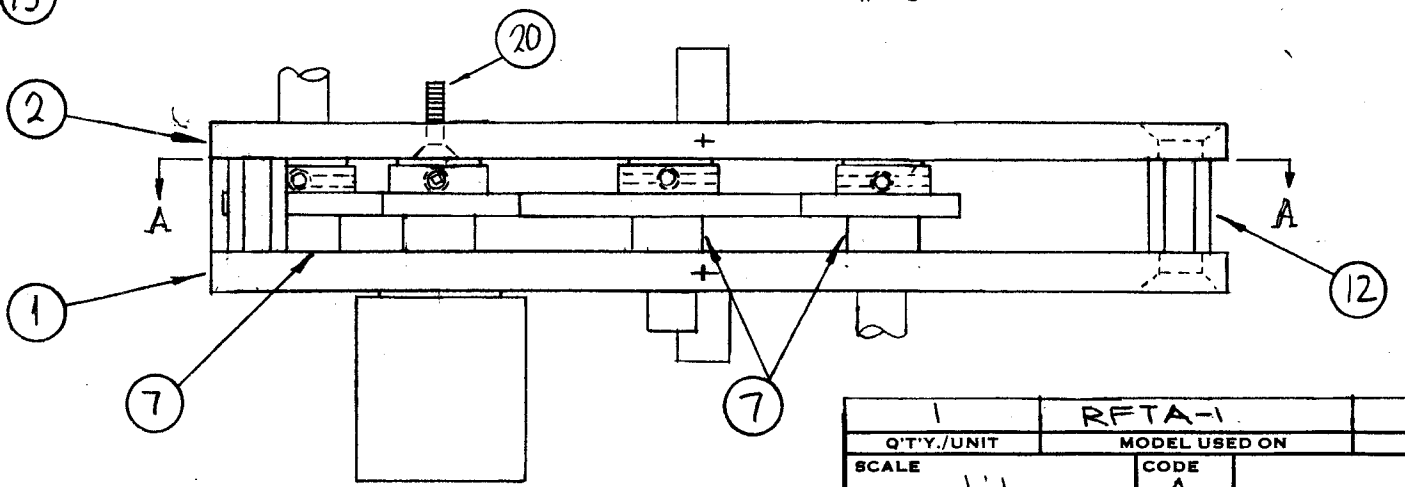


VIEW A-A



NOTES

1		RFTA-1	
Q'TY./UNIT	MODEL USED ON	ASS'Y. NO.	
SCALE 1:1	CODE A		
THE CONTENTS OF THIS DRAWING ARE THE EXCLUSIVE PROPERTY OF THE TECHNICAL MATERIEL CORP. ITS UNAUTHORIZED USE OR REPRODUCTION IN WHOLE OR IN PART IS STRICTLY FORBIDDEN.			

A4330

REVISIONS						
SYM	DESCRIPTION	DATE	E.M.N. NO.	DRAFT	CHKD	APPD
X1	ITEM 20 ADDED	5-23-66	X1			
Ø	ORIGINAL RELEASE FOR PRODUCTION	5/18/67	Ø	CV		
A	PM1211 WAS PM1217 (ITEM 6)	5.8.69	19410	GE		

REQ'D.	ITEM	PART NUMBER	DESCRIPTION	SYMBOL
4	20	SCFP0440BN6	SCREW MACHINE	
6	19	PN59-062-8	PIN;SPRING	
18	18	SCBP-0256BN4	SCREW MACHINE	
4	17	SCBP0632BN6	SCREW MACHINE	
4	16	SCRPI032BN6	SCREW MACHINE	
6	15	SLHC632SP2	SETScrew	
1	14	MS4727	COVER, BOTTOM, GEAR BOX	
2	13	MS4458	COVER, GEAR BOX	
4	12	TE1032AE95H	SPACER THREADED	
2	11	RV117-2-102	RESISTOR, VARIABLE	
2	10	GR225	GEAR SPUR HUB	
2	9	GR-205-33	GEAR SPUR HUB	
4	8	GR205-32	GEAR, SPUR HUB	
6	7	PM117-2	SPACER	
1	6	PM1211	PLATE, SUPPORT ADJUST	
2	5	PM1051-RF-1,187	SHAFT PRECISION	
2	4	PM1051-RF-812	SHAFT PRECISION	
2	3	PM1051-RF-3,187	SHAFT PRECISION	
1	2	LD1861/PM1192-3	PLATE, GEAR, REAR	
1	1	LD1860/PM1193-3	PLATE, GEAR, FRONT	

F. BUDETTI		LIST OF MATERIAL		
MATERIAL		THE TECHNICAL MATERIEL CORP. MAMARONECK, NEW YORK		
FINISH		TITLE GEAR BOX ASS'Y, DRIVER		
UNLESS OTHERWISE SPECIFIED DIMENSIONS ARE IN INCHES AND INCLUDE CHEMICALLY APPLIED OR PLATED FINISHES		DRAWN CHECKED ELECT. DES. MECH. DES.	DATE 8-30-65 DATE 5/19/67 DATE	FINAL APPROVAL A4330 SHEET
DECIMALS .X ± .05 .XX ± .01 .XXX ± .005	TOLERANCES ± 1/64 ANGLES ± 0° 30'	DATE	DATE	REV. LTR. A