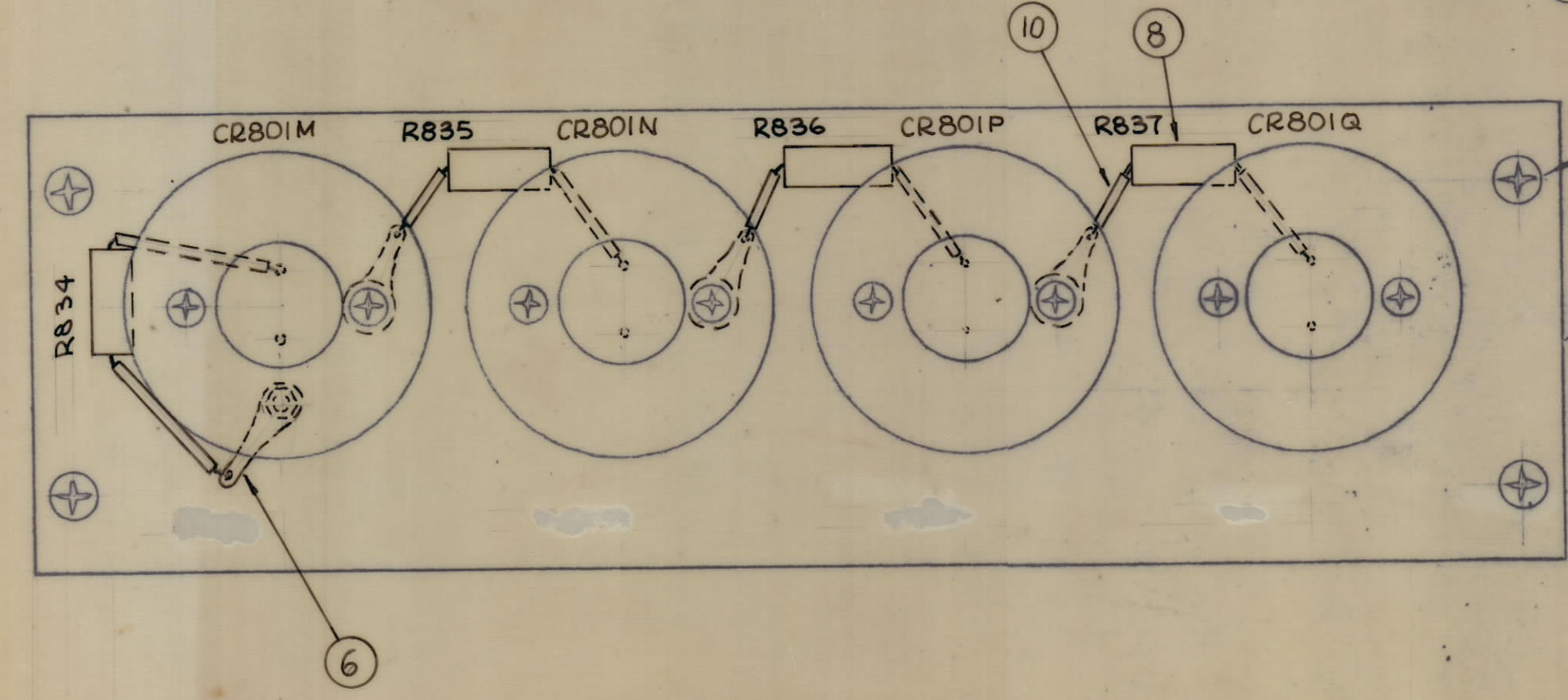
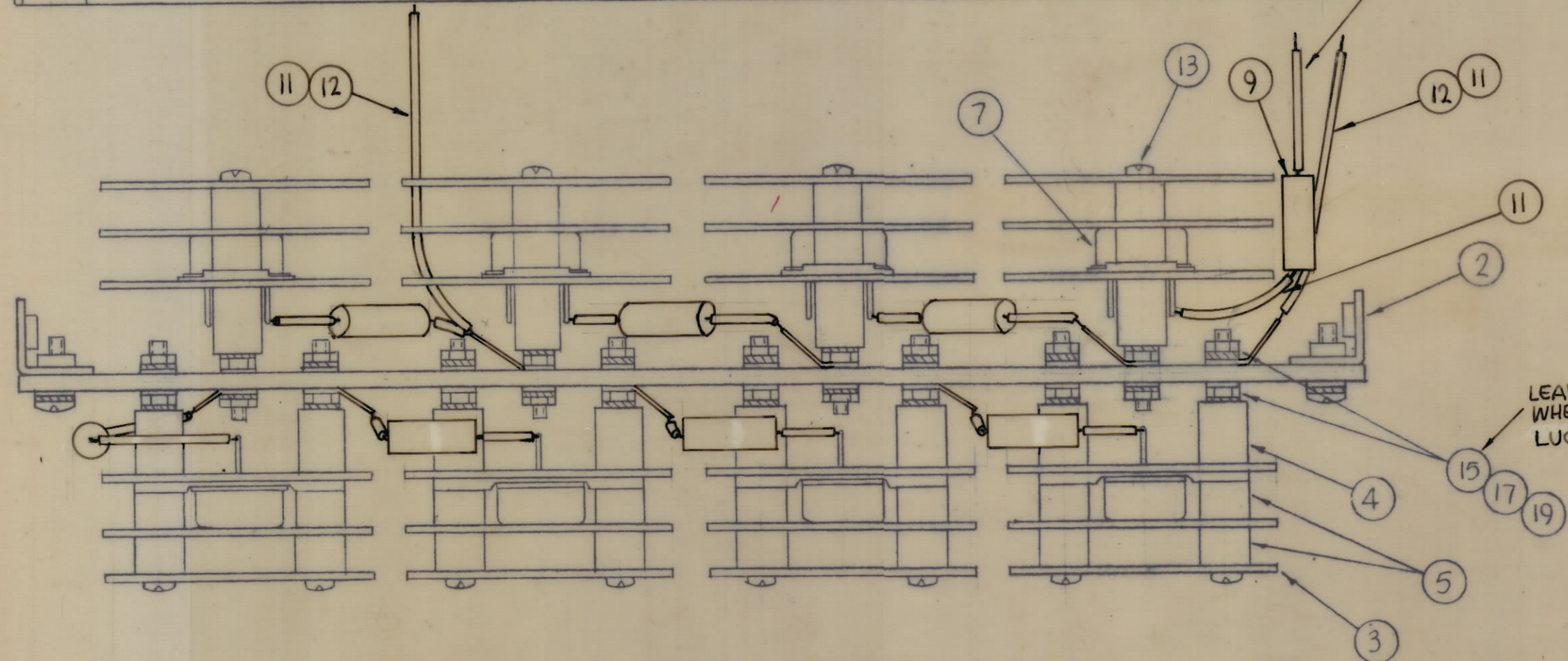
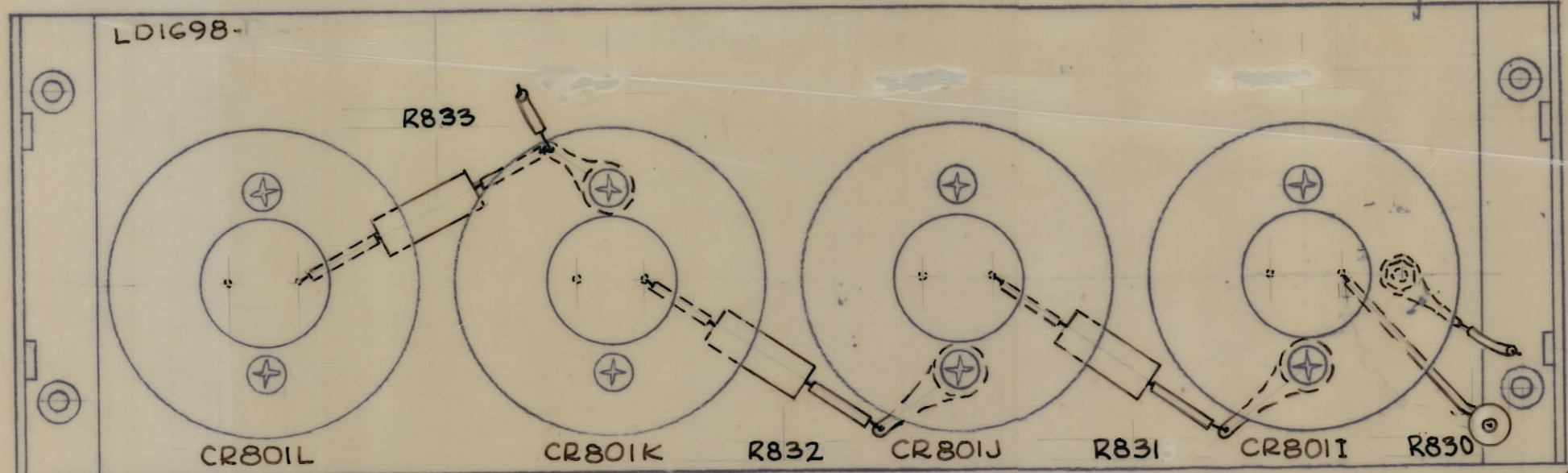


| REVISIONS |     |   |         |            |       |      |      |
|-----------|-----|---|---------|------------|-------|------|------|
| ZONE      | SYM | DESCRIPTION                                       | DATE    | E.M.N. NO. | DRAFT | CHKD | APPD |
|           | Ø   | ORIGINAL RELEASE FOR PRODUCTION                   | 3/7/66  | -11-       | MLA   |      | File |
|           | A   | SYMBOLS ADDED TO ITEMS 7 & 8 PICTORIAL & BUILDUP. | 9.27.66 | 16898      | RME   | JLB  | OK   |



R831, R832,  
R833, R834,  
R835, R836,  
R837

| REQ'D. | ITEM | PART NUMBER     | DESCRIPTION                         | SYMBOL                   |
|--------|------|-----------------|-------------------------------------|--------------------------|
| X      | 20   | BS100           | SOLDER, TIN ALLOY                   |                          |
| 32     | 19   | NTH0632BNB      | NUT, PLAIN, HEX                     |                          |
| 4      | 18   | LWE08MRN        | WASHER, LOCK, EXTERNAL              |                          |
| 32     | 17   | LWE06MRN        | WASHER, LOCK, EXTERNAL              |                          |
| 4      | 16   | FWO8HBN         | WASHER, FLAT                        |                          |
| 24     | 15   | FWO6HBN         | WASHER, FLAT                        |                          |
| 4      | 14   | SCBP0832BNB     | SCREW, MACHINE                      |                          |
| 16     | 13   | SCBP0632BN2B    | SCREW, MACHINE                      |                          |
| X      | 12   | WL100-5         | WIRE, ELECT. BUSS                   |                          |
| X      | 11   | PX370-14-7-4750 | INS. SLVG. TEFLON                   |                          |
| X      | 10   | PX104-4-042     | INS. SLVG. ELECT.                   |                          |
| 1      | 9    | RC42GF22W       | RES. FXD, COMP.                     | R830                     |
| 7      | 8    | RC42GF10W       | RES. FXD, COMP.                     |                          |
| 1      | 7    | VR100S/8-1600-S | DIODE, SILICON, ZENER TYPE, 50 WATT | CR801I, J, K, L, M, P, Q |
| 8      | 6    | TE104-2         | TERM. LOCKING #6                    |                          |
| 32     | 5    | TE117-11        | SPACER, SLV.                        |                          |
| 16     | 4    | TE117-13        | SPACER, SLV.                        |                          |
| 24     | 3    | MS1498          | PLATE, CONNECTOR                    |                          |
| 2      | 2    | MS4221          | BRACKET, SUPPORT                    |                          |
| 1      | 1    | LD1698-/PX887-  | ZENER BOARD, BOTTOM                 |                          |

| F. BUDETTI LIST OF MATERIAL   |              |   |  |                |           |
|---|--------------|---|--|----------------|-----------|
| MATERIAL  |              |   | THE TECHNICAL MATERIEL CORP.<br>MAMARONECK, NEW YORK |                |           |
| FINISH  |              |   | TITLE<br>SEMICONDUCTOR, DEVICE SET ASS'Y             |                |           |
| UNLESS OTHERWISE SPECIFIED<br>DIMENSIONS ARE IN INCHES AND INCLUDE<br>CHEMICALLY APPLIED OR PLATED FINISHES   | DRAWN<br>M/L | DATE<br>3-3-66                            | FINAL APPROVAL<br>M/L                                | DATE<br>3/7/66 |           |
| DECIMALS<br>X ± .05<br>XX ± .01<br>XXX ± .005   | TOLERANCES   | FRACTIONS<br>± 1/64<br>ANGLES<br>± 0° 30' | ELECT. DES.<br>M/L                                   | DATE<br>3-4-66 | A4310     |
| NOTES   |              |   | MECH. DES.<br>M/L                                    | DATE<br>3/7/66 | A         |
| THE CONTENTS OF THIS DRAWING ARE THE EXCLUSIVE PROPERTY<br>OF THE TECHNICAL MATERIEL CORP. ITS UNAUTHORIZED USE OR<br>REPRODUCTION IN WHOLE OR IN PART IS STRICTLY FORBIDDEN. |              |   | SHEET  | DATE           | REV. LTR. |

| GPT-10KLF    |               | A4438      |  |
|--------------|---------------|------------|--|
| QTY/UNIT     | MODEL USED ON | ASS'Y. NO. |  |
| SCALE<br>1:1 | CODE<br>A     |            |  |

NOTES

A4310  
A