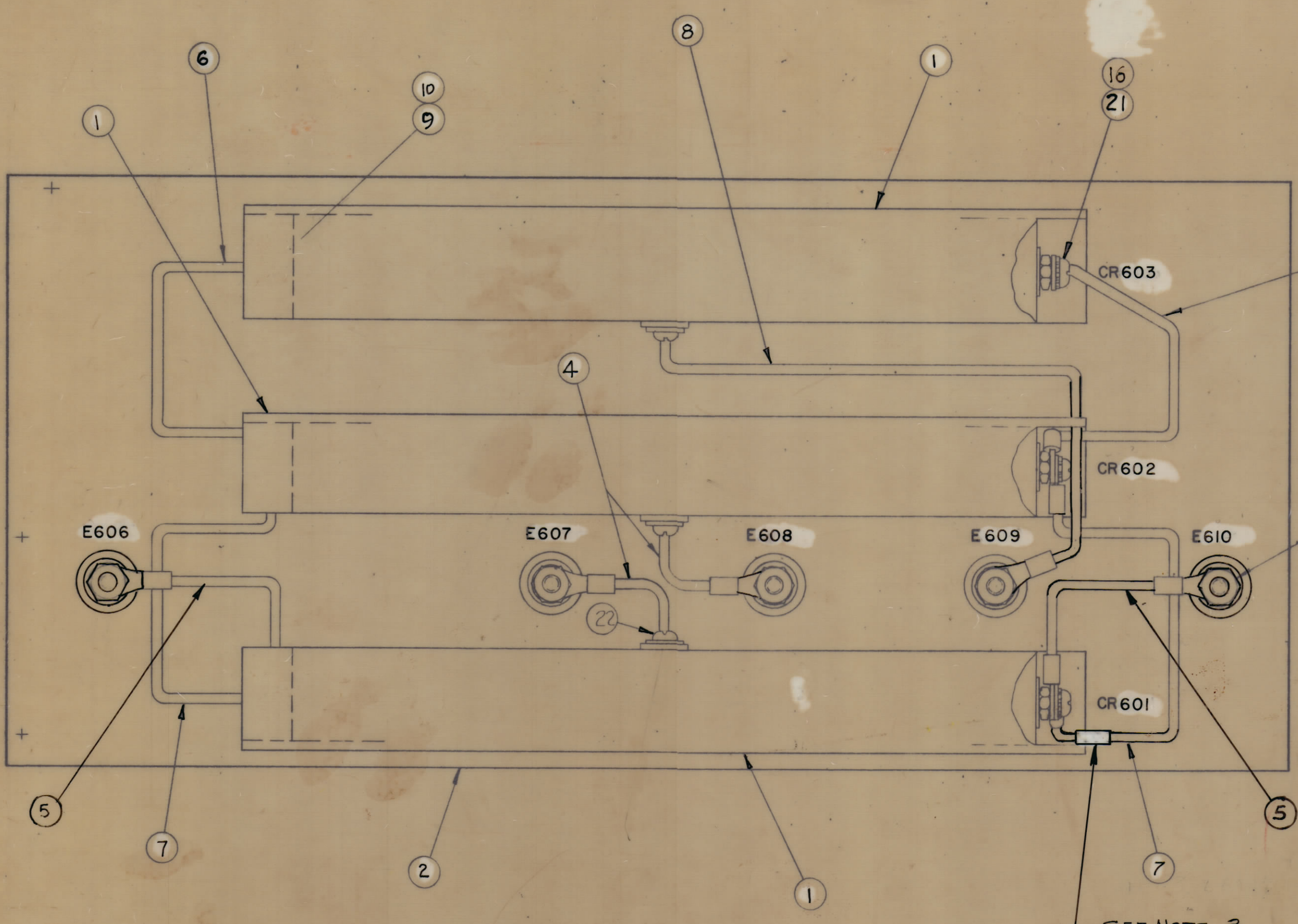


REVISIONS							
ZONE	SYM	DESCRIPTION	DATE	E.M.N. NO.	DRAFT	CHKD	APPD.
	Q	ORIGINAL RELEASE FOR PRODUCTION	8-3-66		RME		
	A	ITEM 5 P/N WAS CA412-11-4.25	1-11-67	17646	RME		
	B	ADDED NOTE "3"	5-16-67	18223			FB
	C	Change DD116 to DD116-2	2-12-81	21868	LAS		



- NOTES -
- 1- * DENOTES LOOSE ITEMS.
 - 2- BAG HARDWARE ATTACHED CONTAINS ITEM 11, QTY. 6 OF ITEM 13, ITEM 14 & 6 OF ITEM 18.
 - 3- MARK CABLES WITH "W" SYMBOLS DURING ASSEMBLY AS PER SCHEMATIC.

3	22	SCBP1032BN6	SCREW, MACHINE	
6	21	SCBP1032BN10	SCREW, MACHINE	
2	20	SCBP1032BN12	SCREW, MACHINE	
2	19	NTH1032BN12	NUT, HEX	
*	11	FW25HBN	WASHER, FLAT	
16	17	FW10HBN	WASHER, FLAT	
10	16	NTC1032BNL	NUT, CAP	
*	1	BG101	BAG, BEMIS CLOTH	
*	6	NTH2520BN14	NUT, HEX	
*	11	LWS25MRN	LOCKWASHER, SPRING TYPE	
14	12	LWS10MRN	LOCKWASHER, SPRING TYPE	
*	6	11	SCBP2520BN12	SCREW, MACHINE
6	10	NTH137-2520	NUT, NYLON	
6	9	SCI43-2520B16	SCREW, MACHINE NYLON	
1	8	CA412-11-16.50	CABLE, ASSEMBLY JUMPER HV	W603
2	7	CA412-11-7.00	CABLE, ASSEMBLY JUMPER HV	W608, 9
2	6	CA412-11-6.50	CABLE, ASSEMBLY JUMPER HV	W604, 5
2	5	CA412-11-5.00	CABLE, ASSEMBLY JUMPER HV	W606, 7
2	4	CA412-11-3.00	CABLE, ASSEMBLY JUMPER HV	W601, 2
5	3	AX152	FEEDTHRU, INSULATED	E606, 7, 8, 9, 10
1	2	PX955/LD1969	BOARD, MTG COMPONENTS	
3	1	DD116-2	RECT, SILICON DEVICES	CR601, 2, 3

A 4307

LIST OF MATERIAL			
MATERIAL		THE TECHNICAL MATERIEL CORP. MAMARONECK, NEW YORK	
FINISH		TITLE ASS'Y, RECTIFIER BOARD	
UNLESS OTHERWISE SPECIFIED DIMENSIONS ARE IN INCHES AND INCLUDE CHEMICALLY APPLIED OR PLATED FINISHES	DRAWN G.D.L.	DATE 7-12-66	FINAL APPROVAL R.B.
DECIMALS .X ± .05 .XX ± .01 .XXX ± .005	TOLERANCES	ANGLE ± 1/64 ± 0° 30'	DATE DATE
THE CONTENTS OF THIS DRAWING ARE THE EXCLUSIVE PROPERTY OF THE TECHNICAL MATERIEL CORP. ITS UNAUTHORIZED USE OR REPRODUCTION IN WHOLE OR IN PART IS STRICTLY FORBIDDEN.		ELECT. DES. MECH. DES.	DATE DATE
NOTES		DATE DATE	DATE DATE

KIT-257		
QTY./UNIT	MODEL USED ON	ASS'Y. NO.
SCALE	CODE	