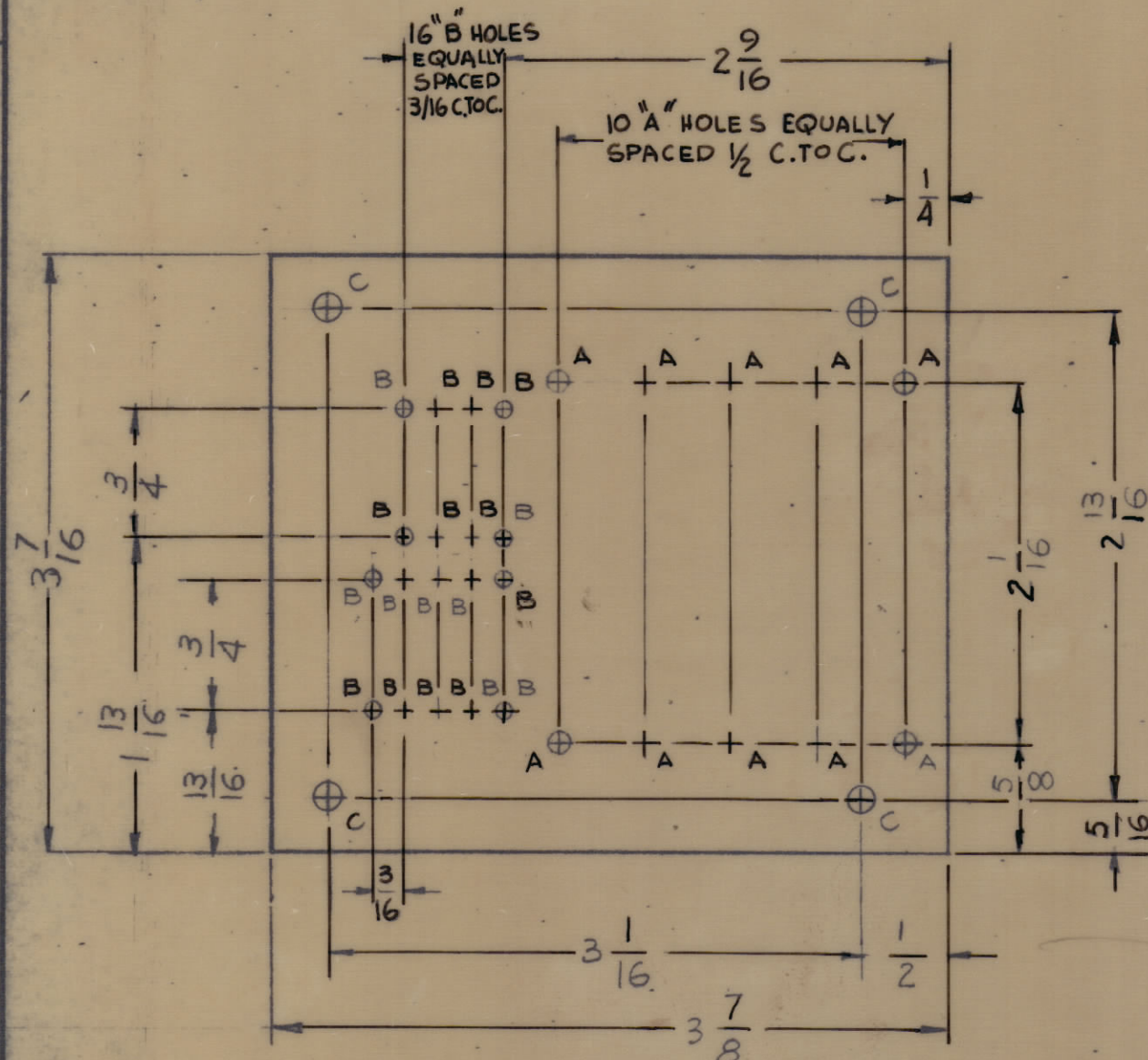


HOLE	DESCRIPTION	REQ'D
A	.112 DIA.	10
B	.072 DIA.	18
C	.189 DIA.	4

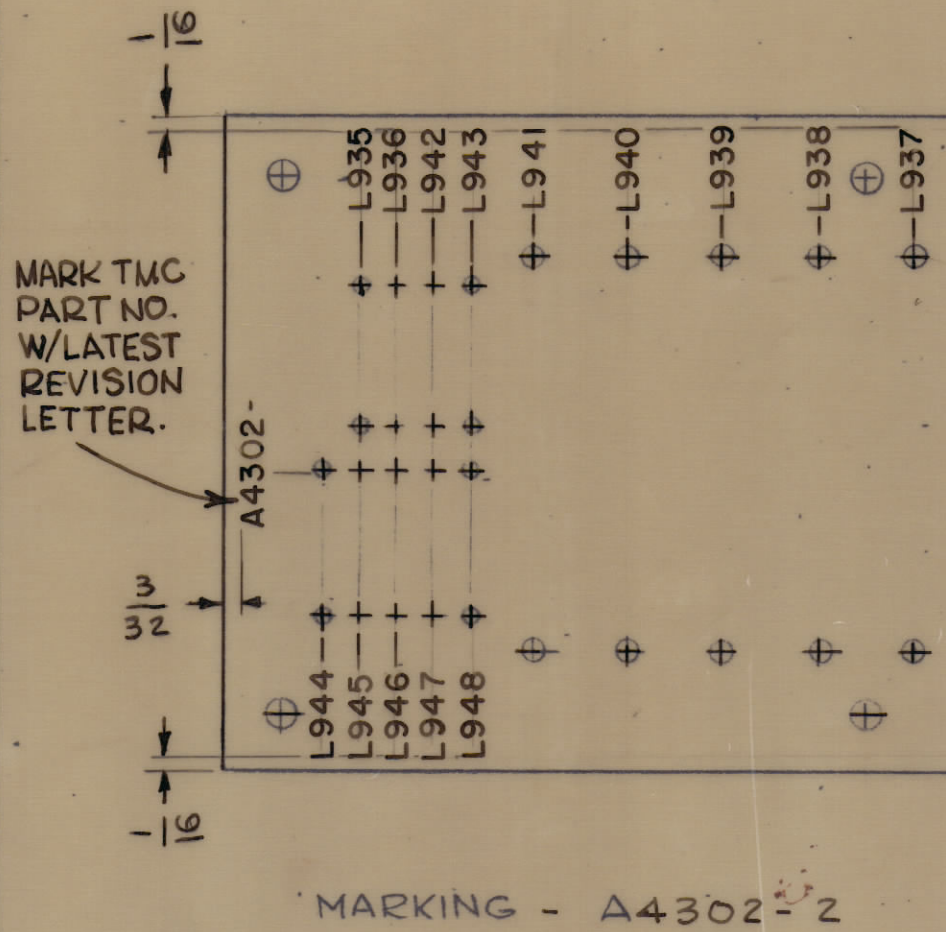
MARKING PROCESS: AS PER TMC SPECIFICATION S-727.

LETTERING: 1/8 HIGH BLACK GOTHIC, LOCATED AS SHOWN.

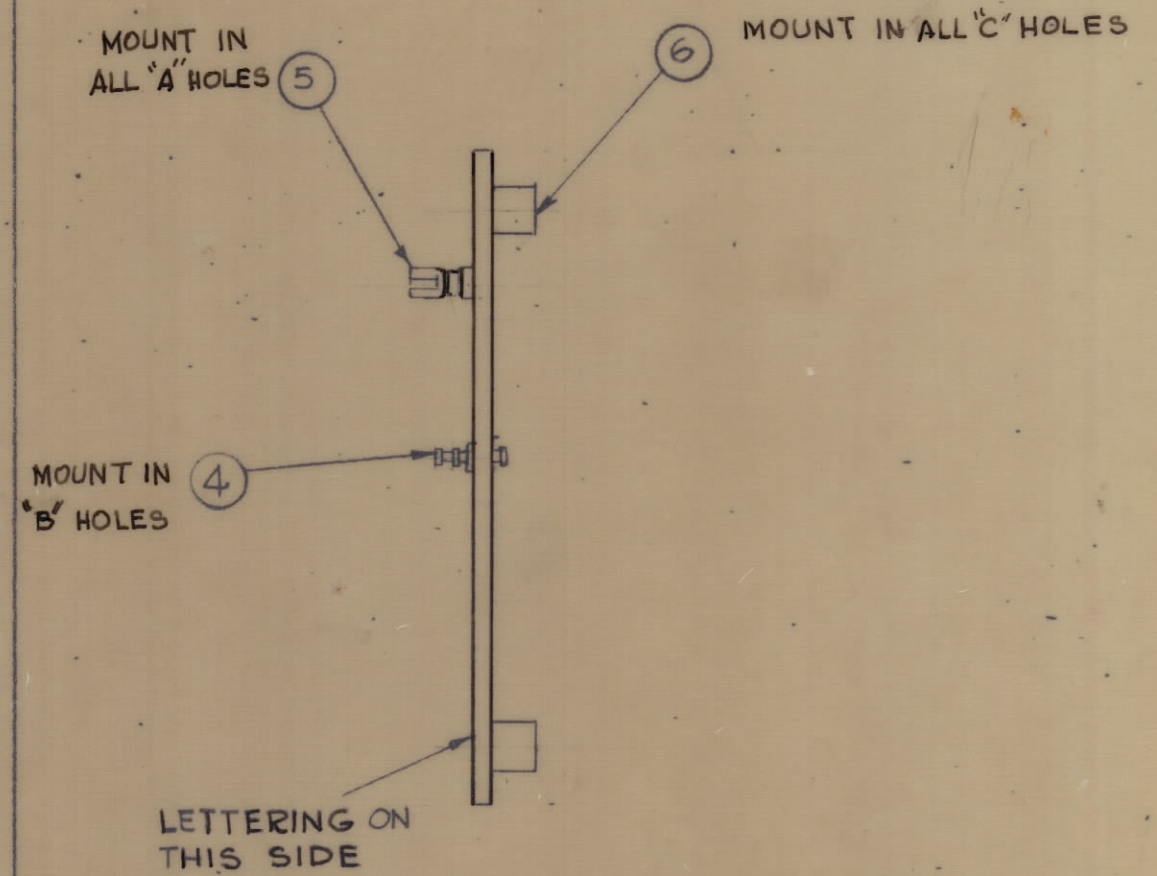
REVISIONS						
ZONE	SYM	DESCRIPTION	DATE	E.M.N. NO.	DRAFT	CHKD
	X1	ITEM 8 & 9 ADDED	7-16-65	X1	G.D.L.	
	X2	ITEM 3 WAS MWC22(L)U4, COLORS ADDED	8-3-65	X2	Jc	
	X3	ON A4302-2, REV LETTER NOTE ADDED	2-14-66		Jc	
	Ø	ORIGINAL RELEASE FOR PRODUCTION	3-14-66	Ø	HKA	



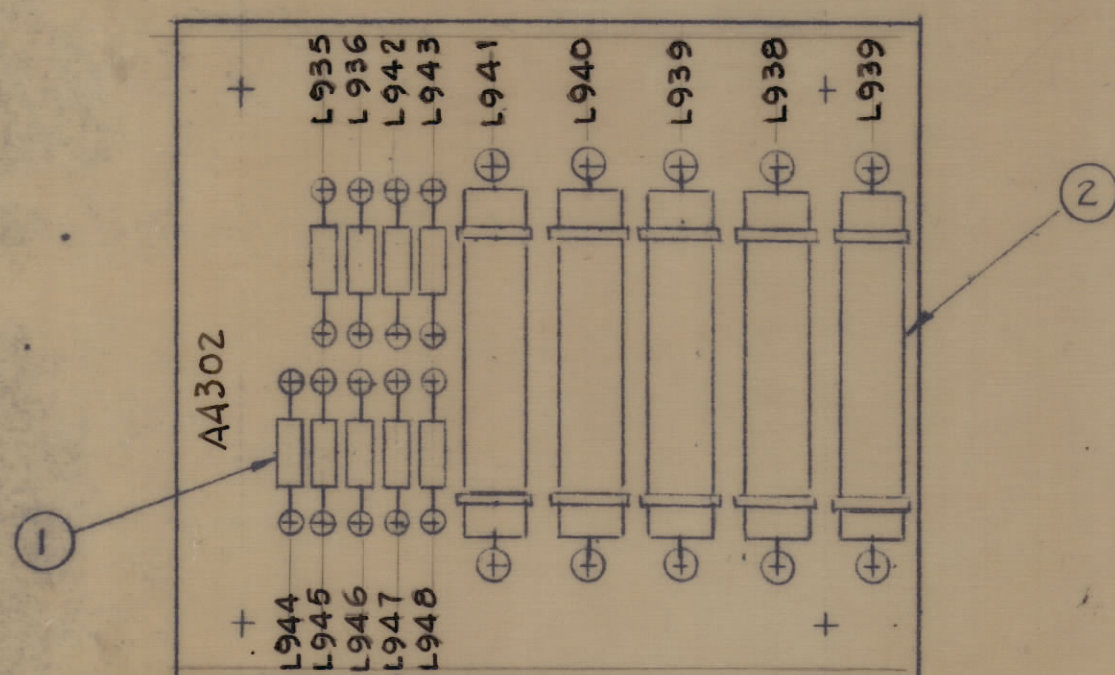
MACHINING - A4302-1  
 MATERIAL: EPOXY G-11 3/32 THK  
 FINISH: NATURAL



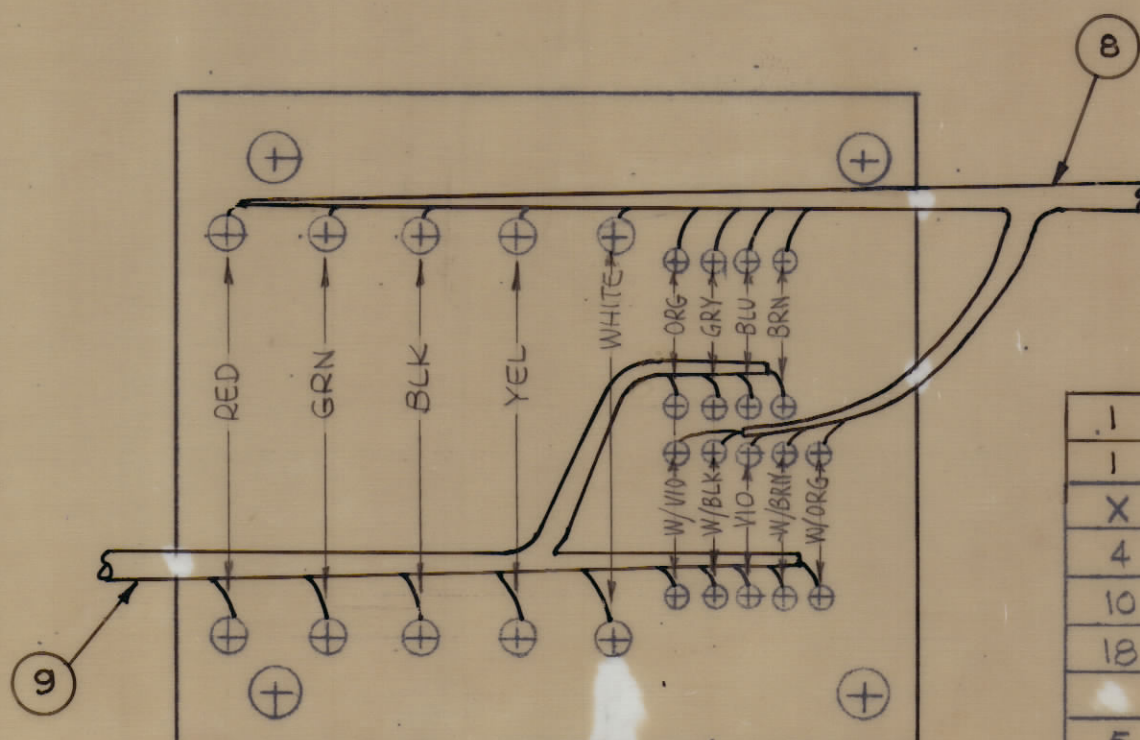
MARKING - A4302-2



SUB-ASSY A4302-3



FINAL ASSY - A4302-4



L935, L936  
 L942 THRU  
 L948

REQ'D	ITEM	PART NUMBER	DESCRIPTION	SYMBOL
1	9	CA 1131	CABLE, GEAR BOX	
1	8	CA 1133-2	CABLE, GEAR BOX	
X	7	BS100	SOLDER, TIN ALLOY	
4	6	TE108-2	NUT, PLN, CLINCH	
10	5	TE109-2	TERMINAL, STUD	
18	4	TE168-4C	TERMINAL, STUD	
	3	DELETED		
5	2	A 1126	COIL RF ASSY.	
9	1	CL275-121	COIL, RF, FIXED	

F. BUDETTI LIST OF MATERIAL			
MATERIAL		SEE MACHINING	
FINISH		SEE MACHINING	
UNLESS OTHERWISE SPECIFIED DIMENSIONS ARE IN INCHES AND INCLUDE CHEMICALLY APPLIED OR PLATED FINISHES		DRAWN G.D.L. DATE 6-24-65	
DECIMALS .X ± .05 .XX ± .01 .XXX ± .005		CHECKED Jc DATE 2-11-66	
FRACTIONS ± 1/64 ± 0° 30'		ELECT. DES. Jc DATE 3-14-66	
TOLERANCES		MECH. DES. Jc DATE	
THE CONTENTS OF THIS DRAWING ARE THE EXCLUSIVE PROPERTY OF THE TECHNICAL MATERIEL CORP. ITS UNAUTHORIZED USE OR REPRODUCTION IN WHOLE OR IN PART IS STRICTLY FORBIDDEN.		FINAL APPROVAL [Signature] DATE 3/14/66	
SCALE 1:1		A4302-Ø	
MODEL USED ON TST ( ) 10K		SHEET 1	
CODE A		REV. LTR.	
ASS'Y. NO. A4140		REPROVAL NO. 4408	

NOTES

A4302-Ø