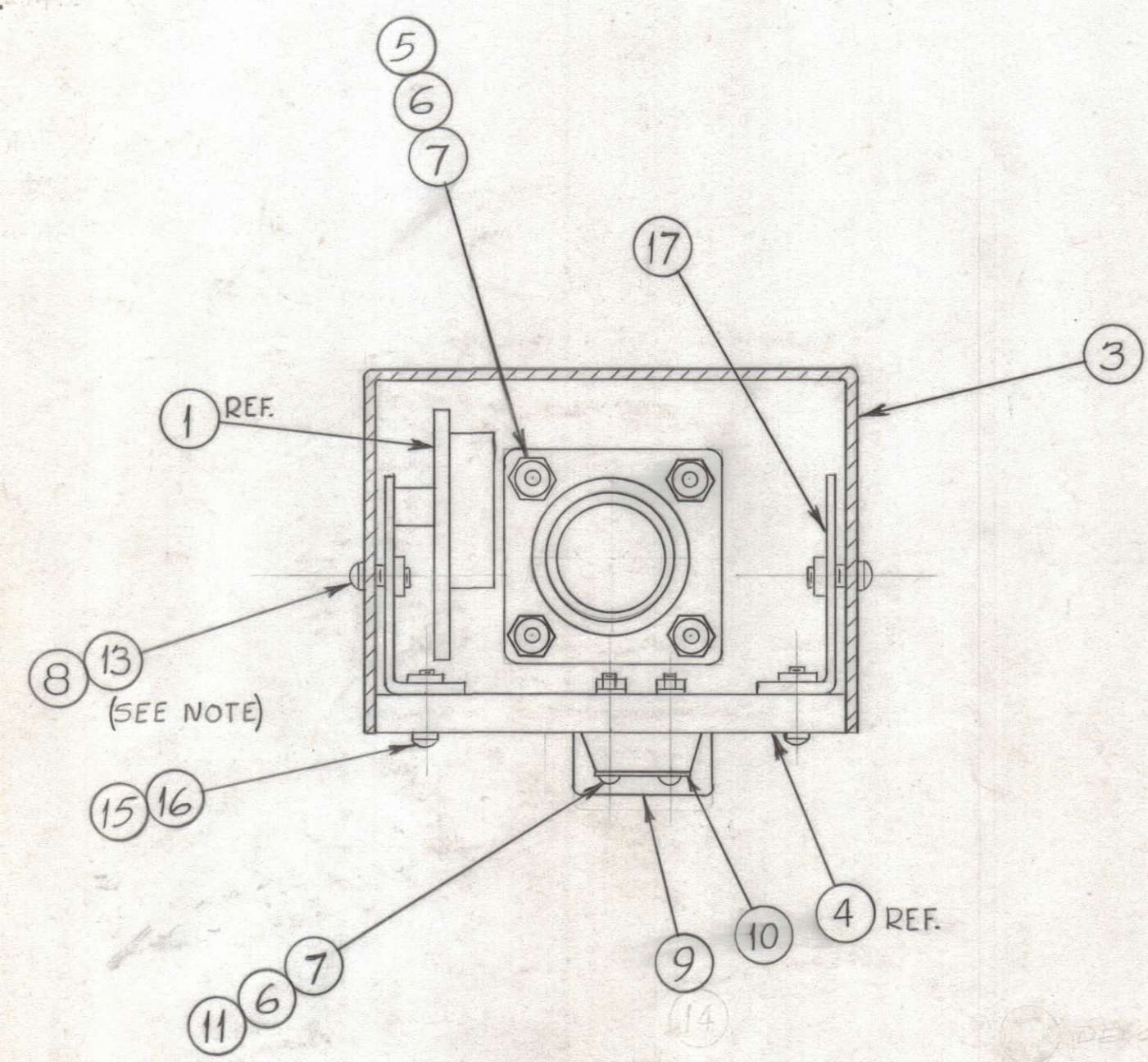
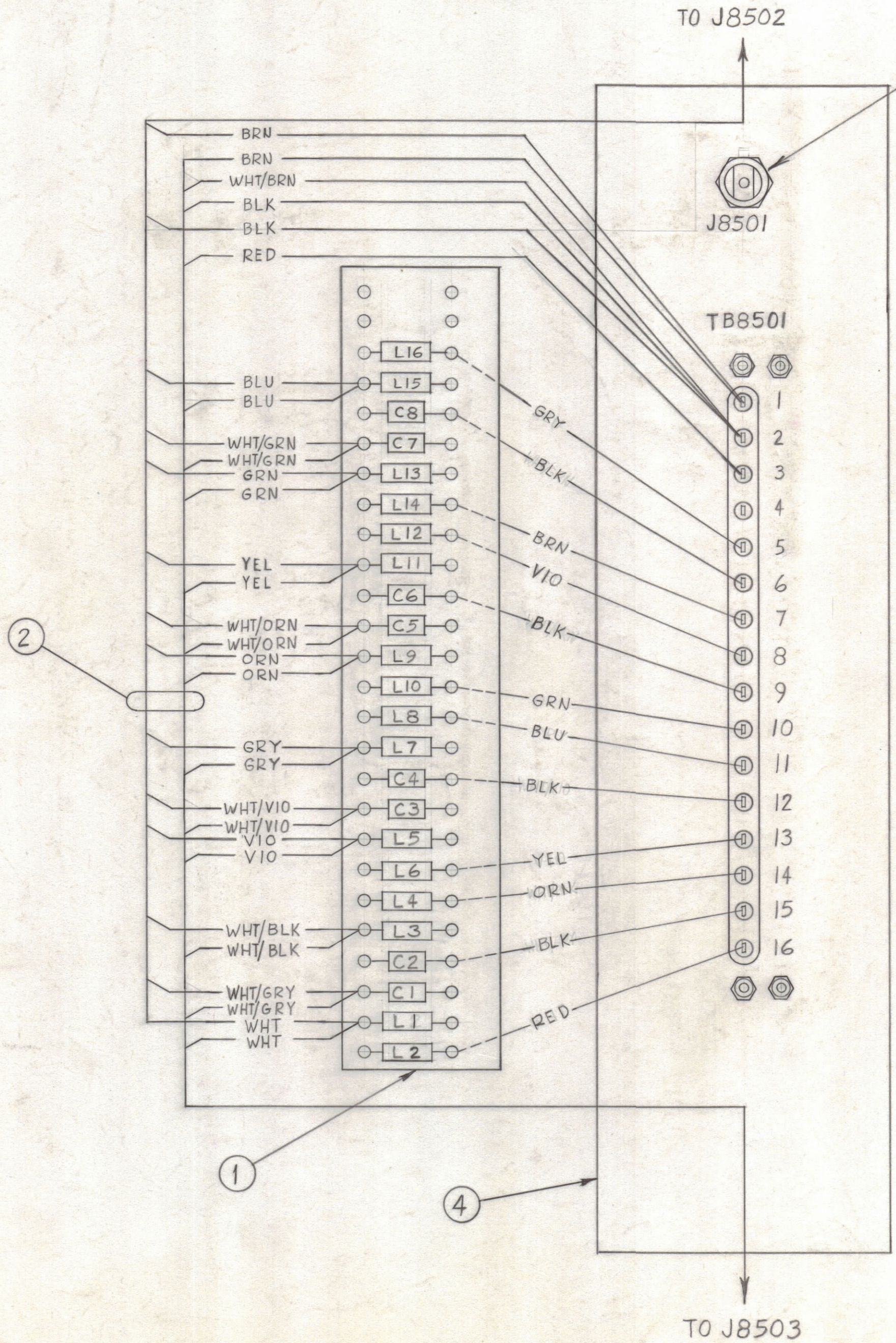


REVISIONS							
ZONE	SYM	DESCRIPTION	DATE	E.M.N. NO.	DRAFT	CHKD	APPD
	XI	IT 15 WAS FW0632 BN7, IT 6 WAS NTO440BN 6, QUANT OF ITEMS 6 & 7 WAS 16	7-16-65	-M-	JC		
	Ø	ORIGINAL RELEASE FOR PRODUCTION	7-19-65	Ø	HYV		
	A	DELETED ITEM 14 (PX337-16)	2-24-66	15736	HLA		



ASS'Y. DETAIL

NOTE:
DO NOT SECURE CHASSIS AND PANEL WITH ITEM 8 UNTIL ASS'Y. IS INSTALLED IN SYSTEM.

REQ'D.	ITEM	PART NUMBER	DESCRIPTION	SYMBOL
2	17	MS3665	BRACKET, MTG.	
4	16	SCBP0632BN7	SCREW, MACHINE	
4	15	FW06HBN	WASHER, FLAT	
	14	DELETED		
4	13	LWE06MRN	WASHER, LOCK, EXT.	
X	12	BS100	SOLDER, TIN ALLOY	
4	11	SCBP0440BN12	SCREW, MACHINE	
2	10	MS154-1	PLATE, MTG., TERM. BOARD	
1	9	TM100-16	TERM. STRIP, BARRIER	
4	8	SCBP0632BN4	SCREW, MACHINE	
1/2	7	LWE04MRN	WASHER, LOCK, EXT.	
1/2	6	NTH0440BN6	NUT, PLAIN, HEX	
8	5	SCBP0440BN6	SCREW, MACHINE	
1	4	LD1933/PX950	PANEL, PATCH	
1	3	MS4561	CHASSIS, ELEC.	
1	2	CA1148-1	WIRING HARNESS, BRANCHED	
1	1	A3416-4	TERM. BOARD FINAL ASS'Y.	

STURMER LIST OF MATERIAL			
MATERIAL		THE TECHNICAL MATERIEL CORP. MAMARONECK, NEW YORK	
FINISH		TITLE FILTER ASSEMBLY	
UNLESS OTHERWISE SPECIFIED DIMENSIONS ARE IN INCHES AND INCLUDE CHEMICALLY APPLIED OR PLATED FINISHES	DRAWN: <i>[Signature]</i>	DATE: 6-30-65	FINAL APPROVAL: <i>[Signature]</i>
DECIMALS: .X ± .05, .XX ± .01, .XXX ± .005	CHECKED: <i>[Signature]</i>	DATE: 7-15-65	DATE: 7/19/65
FRACTIONS: ± 1/64, ANGLES: ± 0° 30'	ELECT. DES.:	DATE: 7-16-65	A4298
TOLERANCES	MECH. DES.:	SHEET	REV. LTR. A

NOTES

THE CONTENTS OF THIS DRAWING ARE THE EXCLUSIVE PROPERTY OF THE TECHNICAL MATERIEL CORP. ITS UNAUTHORIZED USE OR REPRODUCTION IN WHOLE OR IN PART IS STRICTLY FORBIDDEN.

A4298 A