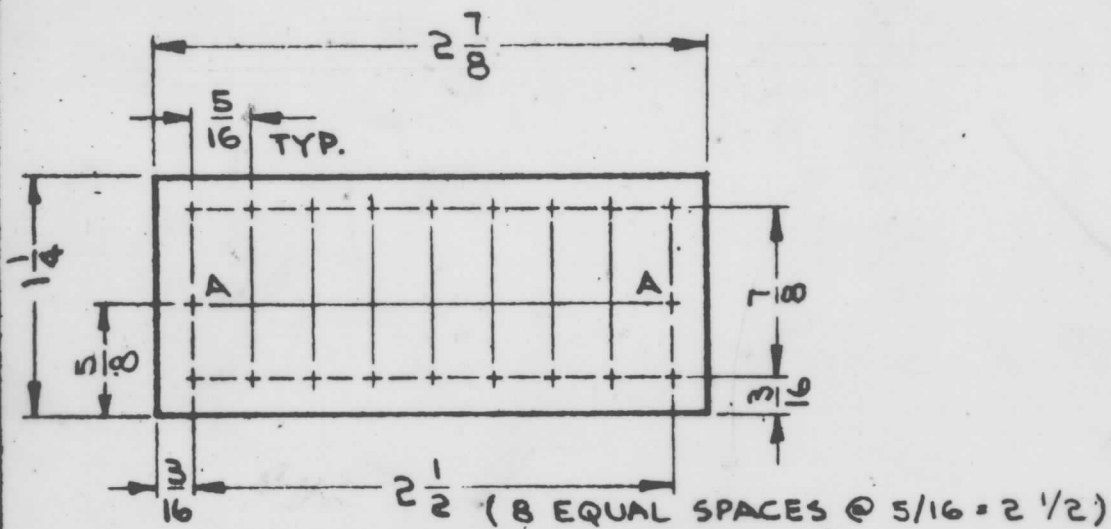


HOLE	DESCRIPTION	REQ.
UNMARKED	3/32 DIA	18
A	.189 DIA.	2

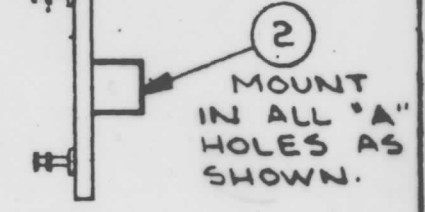


MACHINING (A4285-1)

MATERIAL: 3/32, G-10 EPOXY, LAMINATE GREEN.

1 MOUNT IN ALL "UNMARKED" HOLES AS SHOWN.

MARKING ON THIS SIDE.



SUB ASS'Y (A4285-3)

A4285

REVISIONS

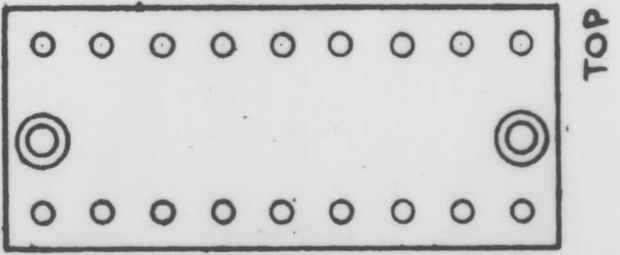
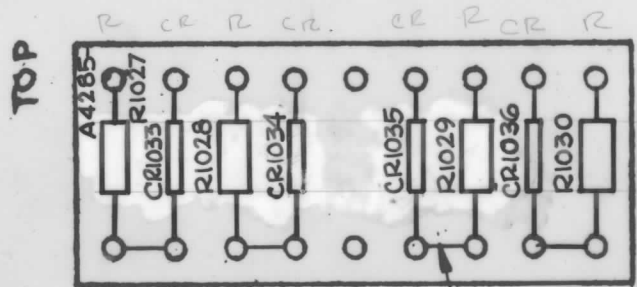
SYM	DESCRIPTION	DATE	E.N.N. NO.	DRAFT	CHKD	APPD
Ø	ORIGINAL RELEASE FOR PRODUCTION	5/24/65	-11	ALP		

UNLESS OTHERWISE SPECIFIED
 MARKING PROCESS: AS PER TMC SPECIFICATION S-727.
 LETTERING: 3/32 HIGH BLACK GOTHIC, LOCATED AS SHOWN
 FUNGUS PROOFING PER TMC SPECIFICATION S-113
 MARK TMC PART NUMBER WITH LATEST REVISION LETTER.

MARKING (A4285-2)



ELECTRICAL ASSY. (A4285-4)



REQ'D.	ITEM	PART NUMBER	DESCRIPTION	SYMBOL
X	6	WL100-7	WIRE, ELEC., BUSS	
X	5	BS100.	SOLDER, TIN ALLOY	
4	4	RC20GF100J	RESISTOR, FIXED; COMPOSITION	R1027-R1030
4	3	1N270	DIODES	CR1033-CR1036
2	2	TE108-2	NUT, PLAIN, CLINCH	A
18	1	TE127-5	TERMINAL, STUD	----

F. EATON LIST OF MATERIAL

MATERIAL: SEE MACHINING
 THE TECHNICAL MATERIEL CORP.
 MAMARONECK NEW YORK

FINISH: SEE MACHINING
 TITLE: TERMINAL BOARD ASSEMBLY

DESIGN	DATE	FINAL APPROVAL	DATE
H. AUSTIN	5-21-65	F. Eaton	5/24/65
CHCKED: JCB	5/24/65		
ELCY. DES. W. JORDAN	5/24/65		
MECH. DES.			

A4285

NOTES

THE CONTENTS OF THIS DRAWING ARE THE EXCLUSIVE PROPERTY OF THE TECHNICAL MATERIEL CORP. ITS UNAUTHORIZED USE OR REPRODUCTION IN WHOLE OR IN PART IS STRICTLY FORBIDDEN.

QTY./UNIT	MODEL USED ON	APP'Y. NO.
SCALE 1:1	CODE A	

DECIMALS	TOLERANCES	FRACTIONS
.X ± .08		± 1/64
.XX ± .01		ANGLES
.XXX ± .005		± 0° 20'