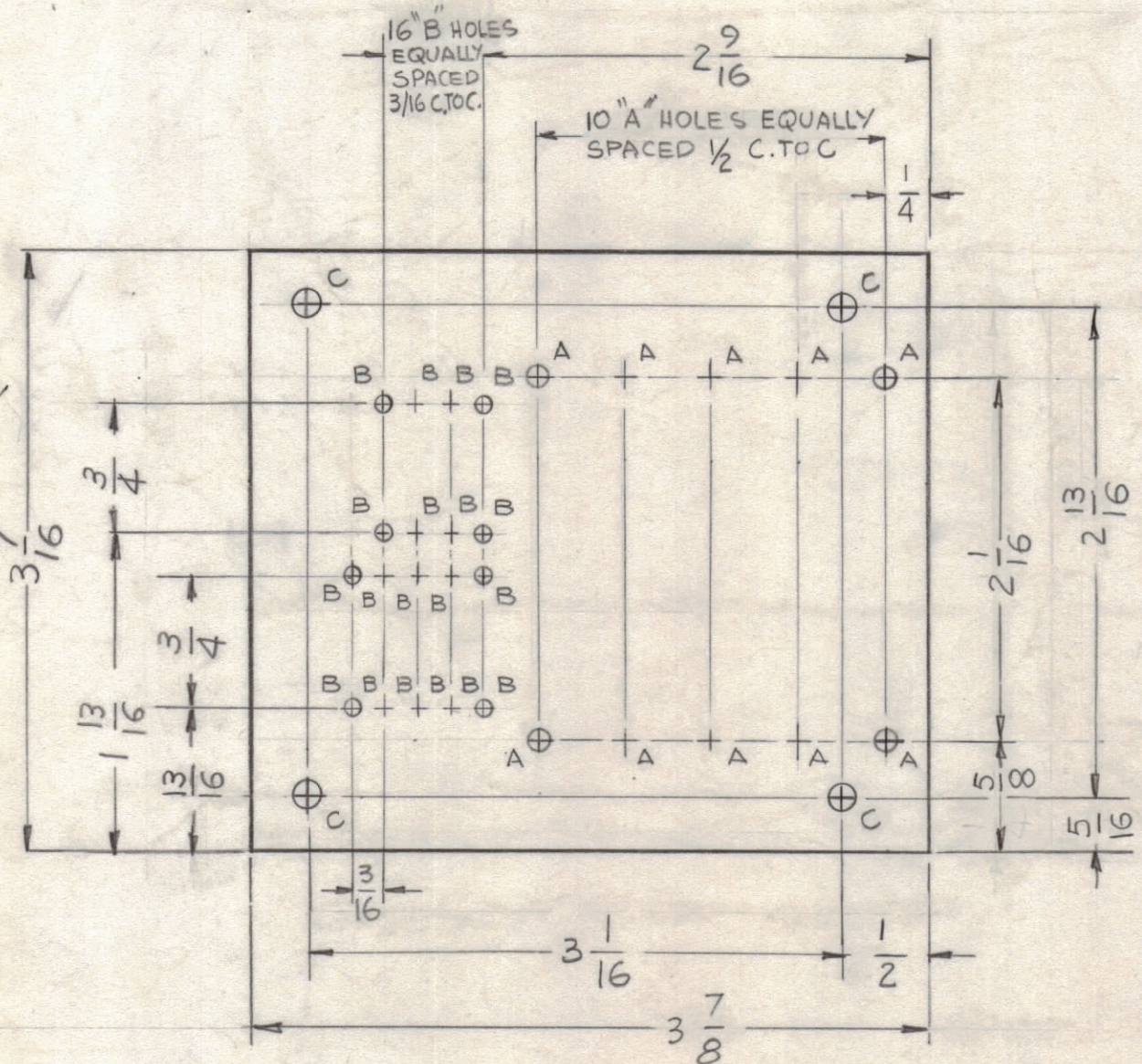


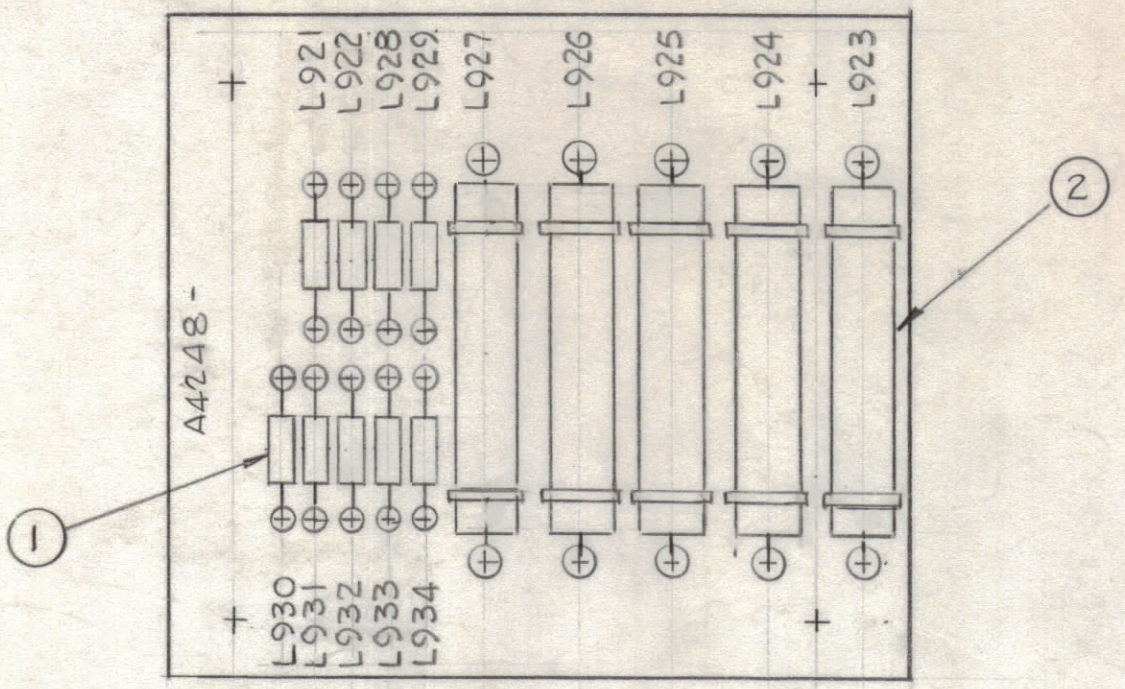
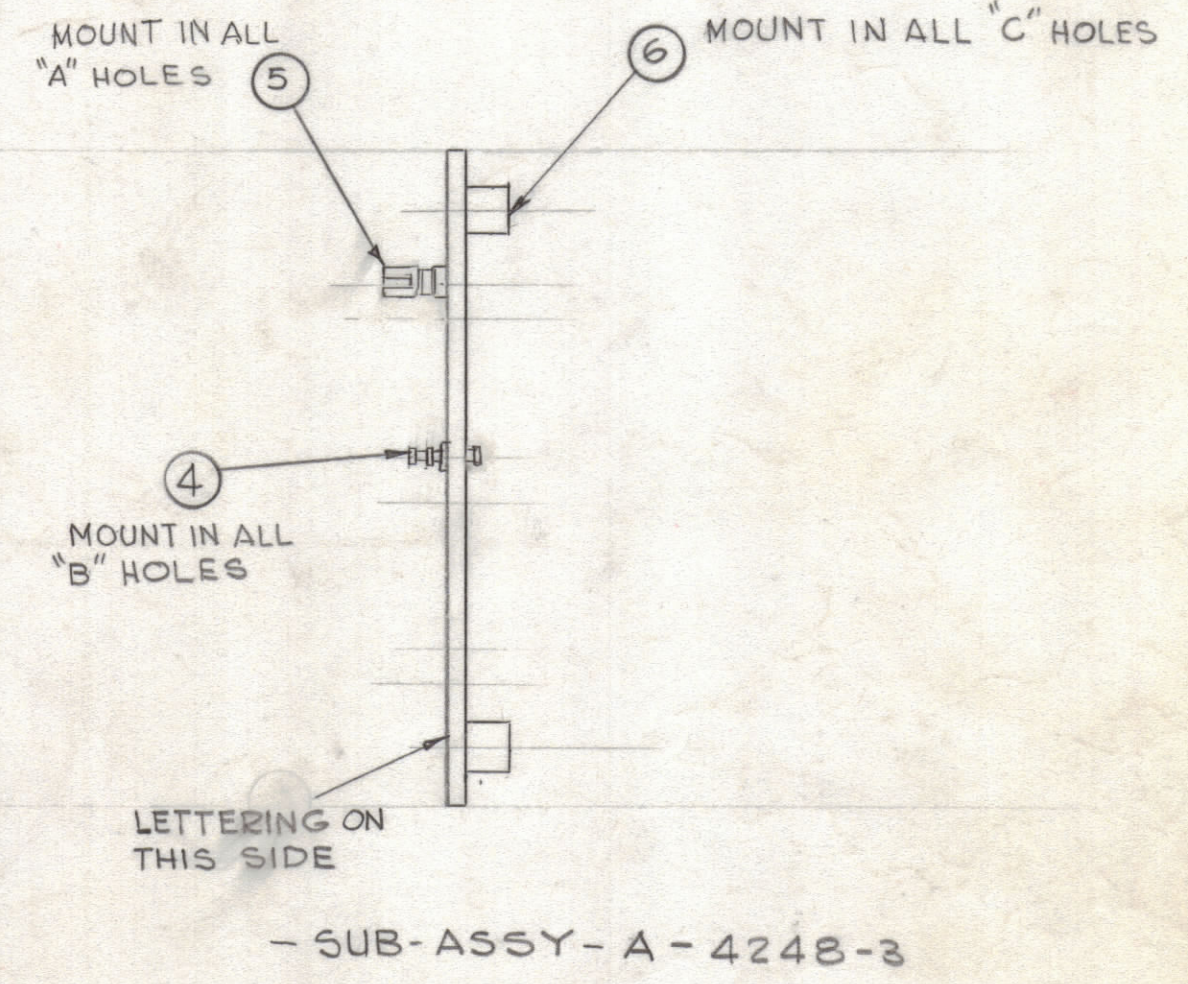
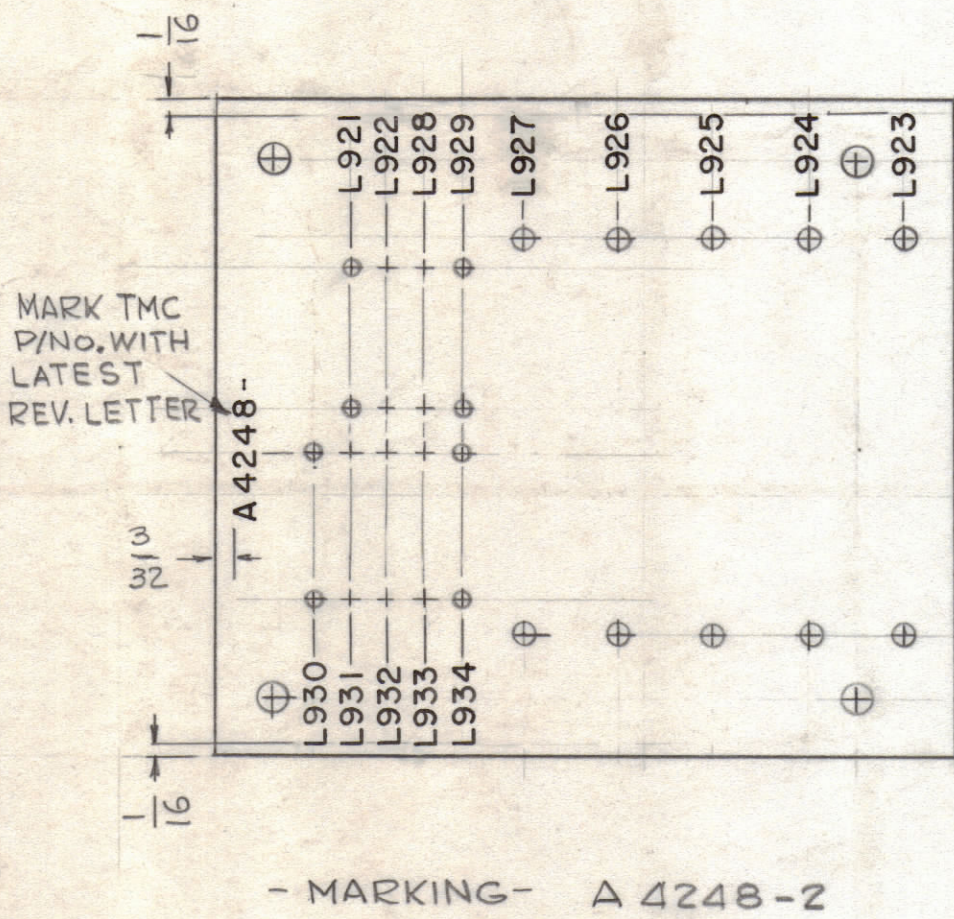
HOLE	DESCRIPTION	REQ'D
A	.112 DIA.	10
B	.072 DIA.	18
C	.189 DIA.	4

MARKING PROCESS: AS PER TMC SPECIFICATION S-727.  
 LETTERING: 1/8 HIGH BLACK GOTHIC, LOCATED AS SHOWN.

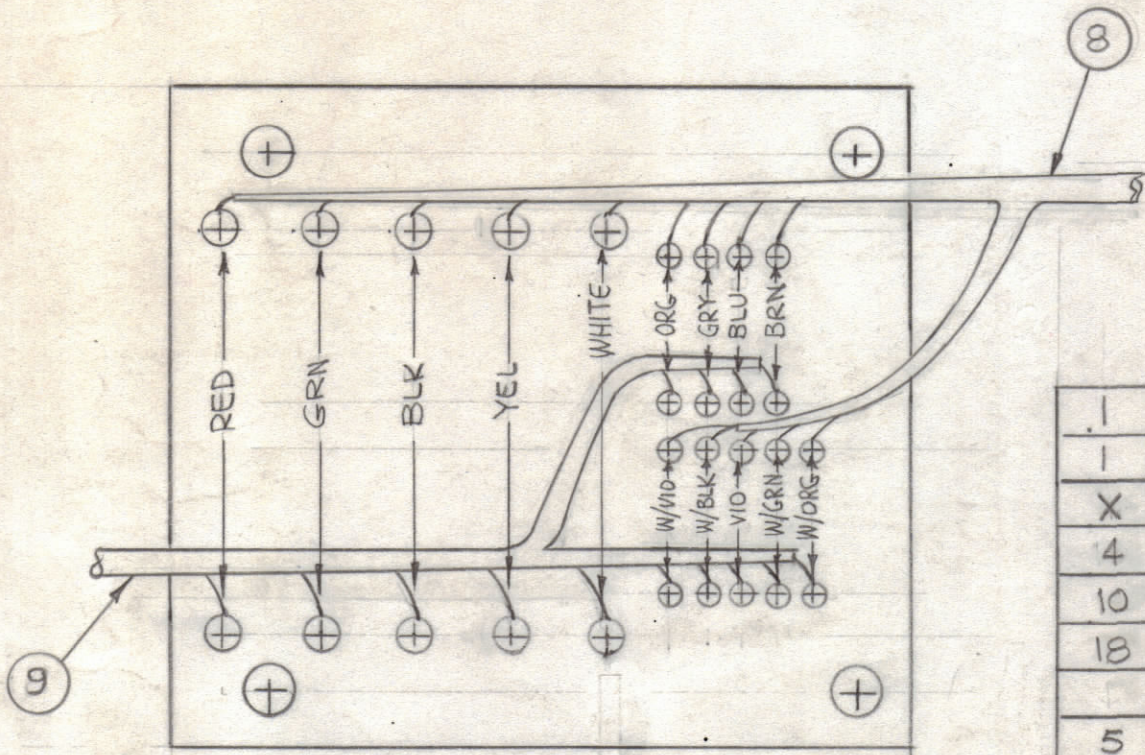
REVISIONS							
ZONE	SYM	DESCRIPTION	DATE	E.M.N. NO.	DRAFT	CHKD	APPD
	X1	ITEM 8 & 9 ADDED	7-16-65	X1	G.D.L.		
	X2	COLORS ADDED, ITEM 3 WAS MWC 22(7)U4	8-3-65	X2	MP		
	Ø	ORIGINAL RELEASE FOR PRODUCTION	5/18/67	Ø	CV		JA



- MACHINING - A 4248-1  
 MATERIAL: EPOXY G-11 3/32 THK  
 FINISH: NATURAL



FINAL ASSY. A 4248-4



REQ'D.	ITEM	PART NUMBER	DESCRIPTION	SYMBOL
1	9	CA 1131	CABLE, GEAR BOX	
1	8	CA 1133-1	CABLE, GEAR BOX	
X	7	BS100	SOLDER, TIN ALLOY	
4	6	TE108-2	NUT, PLN, CLINCH	
10	5	TE109-2	TERMINAL, STUD	
18	4	TE168-4C	TERMINAL, STUD	
	3	DELETED	WIRE, ELEC. INS.	
5	2	A 1126	COIL RF ASSY.	
9	1	CL 275-121	COIL, RF, FIXED	

F. BUDETTI LIST OF MATERIAL				
MATERIAL	SEE MACHINING	THE TECHNICAL MATERIEL CORP. MAMARONECK, NEW YORK		
FINISH	SEE MACHINING	TITLE TERMINAL BOARD ASSY (LOAD)		
UNLESS OTHERWISE SPECIFIED DIMENSIONS ARE IN INCHES AND INCLUDE CHEMICALLY APPLIED OR PLATED FINISHES	DRAWN G.D.L.	DATE 6-24-65	FINAL APPROVAL	DATE 5/18/67
DECIMALS X ± .05 XX ± .01 XXX ± .005	TOLERANCES	± 1/64 ANGLES ± 0° 30'	ELECT. DES. MECH. DES.	DATE DATE SHEET
		A 4248-		Ø
				REV. LTR.

TSTEIOK		A 51A1	
QTY./UNIT	MODEL USED ON	ASSY. NO.	
SCALE 1:1	CODE A		

NOTES

THE CONTENTS OF THIS DRAWING ARE THE EXCLUSIVE PROPERTY OF THE TECHNICAL MATERIEL CORP. ITS UNAUTHORIZED USE OR REPRODUCTION IN WHOLE OR IN PART IS STRICTLY FORBIDDEN.

A 4248-Ø