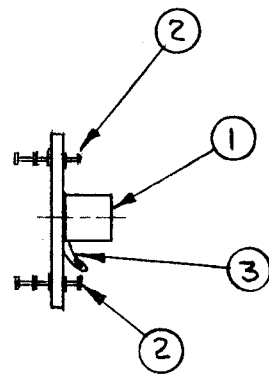


A - .072 DIA - 20 REQ
 B - .189 DIA - 2 REQ

**A4246-1
 MACHINING**

MAT'L -.064 THICK, G11, MELAMINE
 FINISH- NATURAL

**FUNGUS PROOFING PER
 TMC SPECIFICATION S-113**



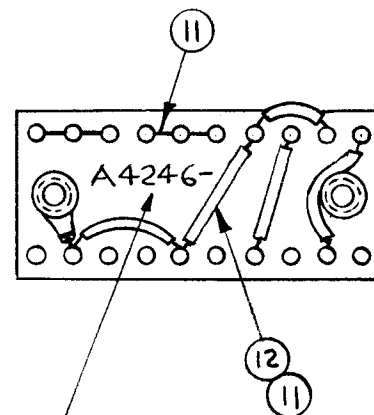
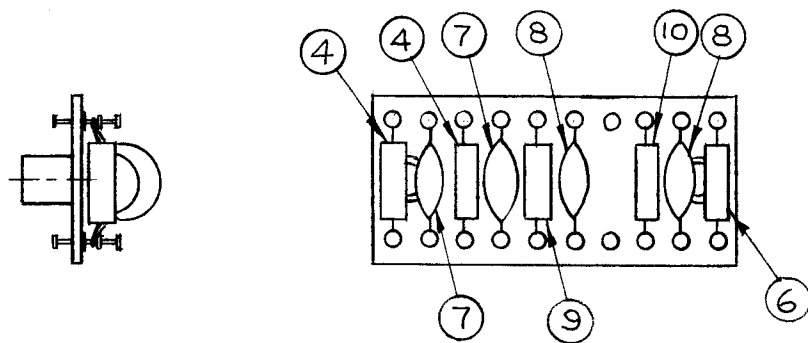
**A4246-2
 SUB-ASSY**

A4246

REVISIONS

SYM	DESCRIPTION	DATE	E.M.N. NO.	DRAFT	CHKD	APPD
X1	ITEM 5 WAS RC20GF474J, R213	11-4-65	X1	MSB		MSB
Ø	ORIGINAL RELEASE FOR PRODUCTION	6.7.66	Ø	4W		4W

REQ'D.	ITEM	PART NUMBER	DESCRIPTION	SYMBOL
X	13	BS100	SOLDER, SOFT	
X	12	PX104-1-034	SLEEVING, ELECT., INSULATION	
X	11	WL100-6	WIRE, BUSS, TINNED	
1	10	CL275-151	CHOKE, RF FILTER	L244
1	9	CL275-221	CHOKE, RF FILTER	L242
2	8	CC100-16	CAPACITOR, DISC, CERAMIC	C280,285
2	7	CC100-15	CAPACITOR, DISC, CERAMIC	C277,279
1	6	RC20GF105J	RESISTOR, FIXED	R215
	5	DELETED		
2	4	RC20GF104J	RESISTOR, FIXED	R211,212
1	3	TE116-3	SOLDER LUG	
20	2	TE168-4B	TERMINAL, MINIATURE	A
2	1	TE108-1	STANDOFF, RIVET TYPE	B



MARK TMC P/N 3/32 HIGH
 BLACK GOTHIC AS PER
 TMC S-727, WITH LATEST
 REVISION LETTER.

**A4246-3
 FINAL ASSEMBLY**

F. BUDETTI		LIST OF MATERIAL	
MATERIAL		THE TECHNICAL MATERIEL CORP. MAMARONECK, NEW YORK	
FINISH		TITLE TERMINAL BOARD ASSY	
UNLESS OTHERWISE SPECIFIED DIMENSIONS ARE IN INCHES AND INCLUDE CHEMICALLY APPLIED OR PLATED FINISHES		DRAWN MSB CHECKED JCB ELECT. DES. RJB MECH. DES. JCB	DATE 4.26.65 DATE DATE DATE
DECIMALS .X ± .05 .XX ± .01 .XXX ± .005		FINAL APPROVAL DATE A4246 SHEET REV. LTR.	

1	RFTA-1	ASS'Y. NO.
Q'TY./UNIT	MODEL USED ON	
SCALE 1:1	CODE A	

THE CONTENTS OF THIS DRAWING ARE THE EXCLUSIVE PROPERTY
 OF THE TECHNICAL MATERIEL CORP. ITS UNAUTHORIZED USE OR
 REPRODUCTION IN WHOLE OR IN PART IS STRICTLY FORBIDDEN.

NOTES