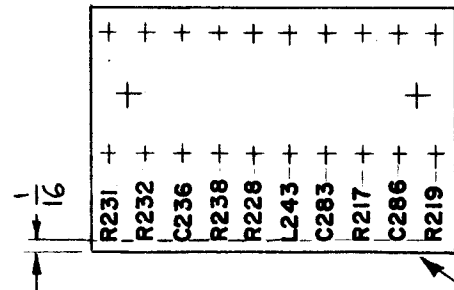


A - .072 DIA - 20 REQ
 B - .189 DIA - 2 REQ

A4241-1
MACHINING

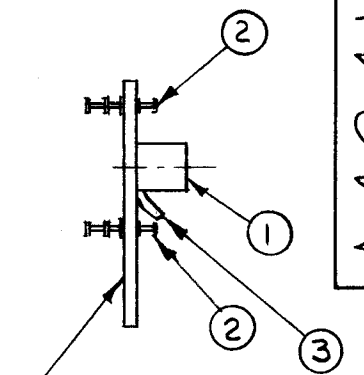
**FUNGUS PROOFING PER
 TMC SPECIFICATION S-113**



MARK TMC P/N A4241-
 WITH LATEST REVISION
 LETTER ON REAR

MARKING PROCESS: TMC S-727
LETTERING: 3/32 HIGH
 BLACK GOTHIC LOCATED
 AS SHOWN.

A4241-2
MARKING



MARKING ON THIS
 SIDE.

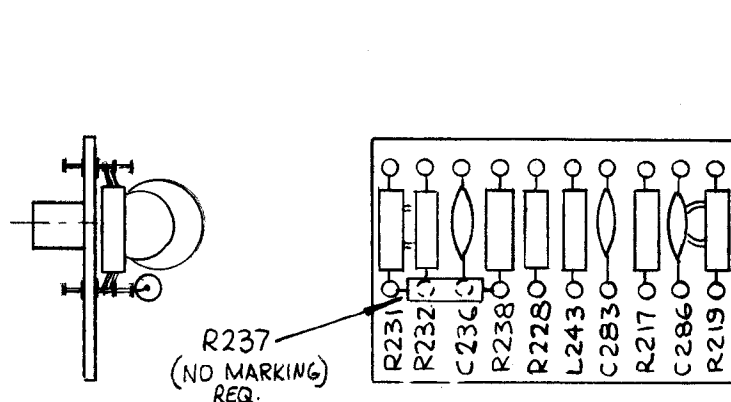
A4241-3
SUB-ASSY

A4241

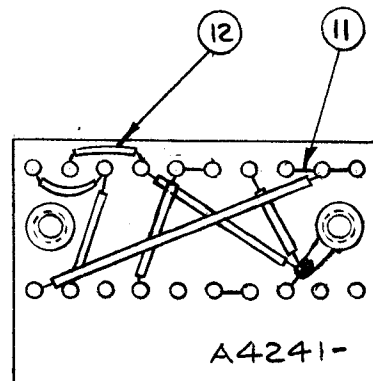
| REVISIONS | | | | | | |
|-----------|--|---------|------------|-------|------|------|
| SYM | DESCRIPTION | DATE | E.M.N. NO. | DRAFT | CHKD | APPD |
| X1 | ITEM 7 WAS IN 303, IT 9 WAS CC100-15, 2 ITEM 4 ADDED | 11-4-65 | X1 | | | 09 |
| Ø | IT. 4 WAS RC20GF3313, IT. 5 WAS RC20GF682J | | | | | |
| Ø | ORIGINAL RELEASE FOR PRODUCTION | 4/20/67 | Ø | CV | | |

| REQ'D. | ITEM | PART NUMBER | DESCRIPTION | SYMBOL |
|--------|------|-------------|-----------------------------|-------------------|
| X | 13 | BS100 | SOLDER, SOFT | |
| X | 12 | PX104-1-034 | SLEEVING, ELECT. INSULATION | |
| X | 11 | WL100-6 | WIRE, BUSS, TINNED | |
| 3 | 10 | CC100-16 | CAPACITOR, DISC, CERAMIC | C283, 286 236 |
| | 9 | DELETED | | |
| 1 | 8 | CL275-151 | CHOKE, RF FILTER | L243 |
| 1 | 7 | RC20GF104J | RESISTOR, FIXED COMP. | R228 |
| 2 | 6 | RC20GF105J | RESISTOR, FIXED | R217, 219 |
| 1 | 5 | ↓ 682J | ↓ | R238 |
| 3 | 4 | RC20GF331J | RESISTOR, FIXED | R231, 232, 237 |
| 1 | 3 | TE116-3 | SOLDER LUG | |
| 20 | 2 | TE168-4B | TERMINAL, MINIATURE | A |
| 2 | 1 | TE108-1 | STANDOFF, RIVET TYPE | B |

| F. BUDETTI LIST OF MATERIAL | | | | |
|---|--|------------------------------|---------|----------------|
| MATERIAL | | THE TECHNICAL MATERIEL CORP. | | |
| .064 THK MELAMINE G-II | | MAMARONECK, NEW YORK | | |
| FINISH | | TITLE | | |
| NATURAL | | TERMINAL BOARD ASSY | | |
| UNLESS OTHERWISE SPECIFIED DIMENSIONS ARE IN INCHES AND INCLUDE CHEMICALLY APPLIED OR PLATED FINISHES | | DRAWN | DATE | FINAL APPROVAL |
| | | lb | 4.26.65 | [Signature] |
| | | CHECKED | DATE | |
| | | | | 4/20/67 |
| DECIMALS | | ELECT. DES. | DATE | |
| .X ± .05 | | aa | 11/4/65 | |
| .XX ± .01 | | MECH. DES. | DATE | |
| .XXX ± .005 | | | | |
| FRACTIONS | | A4241 | | Ø |
| ± 1/64 | | SHEET | | REV. LTR. |
| ANGLES | | | | |
| ± 0° 30' | | | | |



A4241-4
FINAL ASSEMBLY



| 1 | RFTA-1 | ASS'Y. NO. |
|------------|---------------|------------|
| Q'TY./UNIT | MODEL USED ON | |
| SCALE | CODE | |
| 1:1 | A | |

THE CONTENTS OF THIS DRAWING ARE THE EXCLUSIVE PROPERTY
 OF THE TECHNICAL MATERIEL CORP. ITS UNAUTHORIZED USE OR
 REPRODUCTION IN WHOLE OR IN PART IS STRICTLY FORBIDDEN.

NOTES