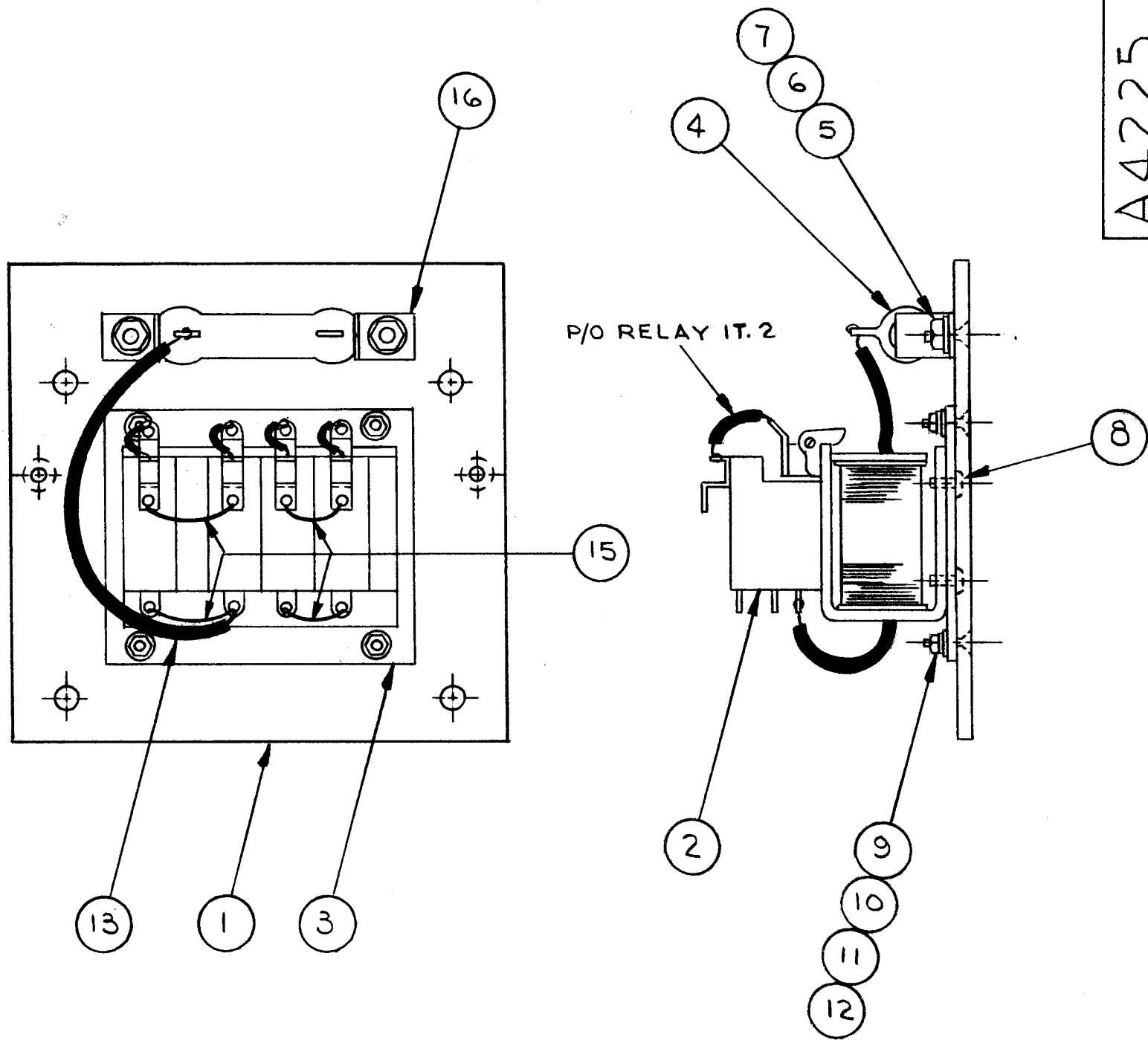


A4225



REVISIONS					
SYM	DESCRIPTION	DATE	E.M.N. NO.	DRAFT	CHKD APPD
X2	REDRAWN & REVISED	3/14/66		JL	
Ø	ORIGINAL RELEASE FOR PRODUCTION	3-17-66		Jc	

REQ'D.	ITEM	PART NUMBER	DESCRIPTION	SYMBOL
2	16	CU164-2	RETAINER, RESISTOR	
4	15	WL100-7	WIRE, ELECTRIC, BUSS	
X	14	BS100	SOLDER, TIN ALLOY	
5	13	MWC16(19)U4	WIRE, ELECTRIC INSULATED	
4	12	NTH0440BN6	NUT, PLAIN, HEX	
4	11	LWS04MRN	WASHER, SPLIT	
4	10	FW04HBN	WASHER, FLAT	
4	9	SCFP0440BN7	SCREW, MACHINE	
4	8	SCBP0632BN4	SCREW, MACHINE	
2	7	NTH0832BN10	NUT, PLAIN, HEX	
2	6	LWE08MRN	WASHER, LOCK, EXTERNAL	
2	5	SCFP0832BN5	SCREW, MACHINE	
1	4	RW110-32	RESISTOR, FIXED, WW-20W	
1	3	PX463	BOARD, MTG, RELAY	
1	2	RL124	RELAY, ARMATURE-LATCH	
1	1	MS4446	PLATE, MTG, RELAY/RESISTOR	

REQ'D.		ITEM	PART NUMBER	DESCRIPTION	SYMBOL
BUDETTI LIST OF MATERIAL					
MATERIAL			THE TECHNICAL MATERIEL CORP. MAMARONECK, NEW YORK		
FINISH			TITLE RELAY/RESISTOR ASSEMBLY		
UNLESS OTHERWISE SPECIFIED DIMENSIONS ARE IN INCHES AND INCLUDE CHEMICALLY APPLIED OR PLATED FINISHES			DRAWN J. LESHINSKI DATE 3/15/66	FINAL APPROVAL <i>[Signature]</i> DATE 3/17/66	DATE 3/17/66
DECIMALS .X ± .05 .XX ± .01 .XXX ± .005			TOLERANCES ± 1/64 ANGLES ± 0° 30'		ELECT. DES. aa DATE 3-17-66
THE CONTENTS OF THIS DRAWING ARE THE EXCLUSIVE PROPERTY OF THE TECHNICAL MATERIEL CORP. ITS UNAUTHORIZED USE OR REPRODUCTION IN WHOLE OR IN PART IS STRICTLY FORBIDDEN.			MECH. DES. DATE		SHEET A4225 REV. LTR.

2	KIT-206	
Q'TY./UNIT	MODEL USED ON	ASS'Y. NO.
SCALE #	CODE	

NOTES