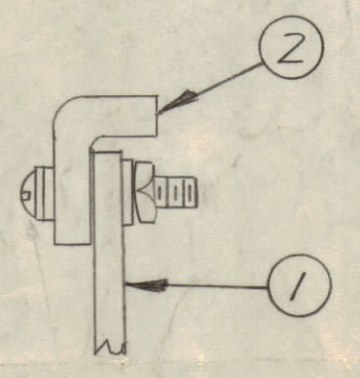


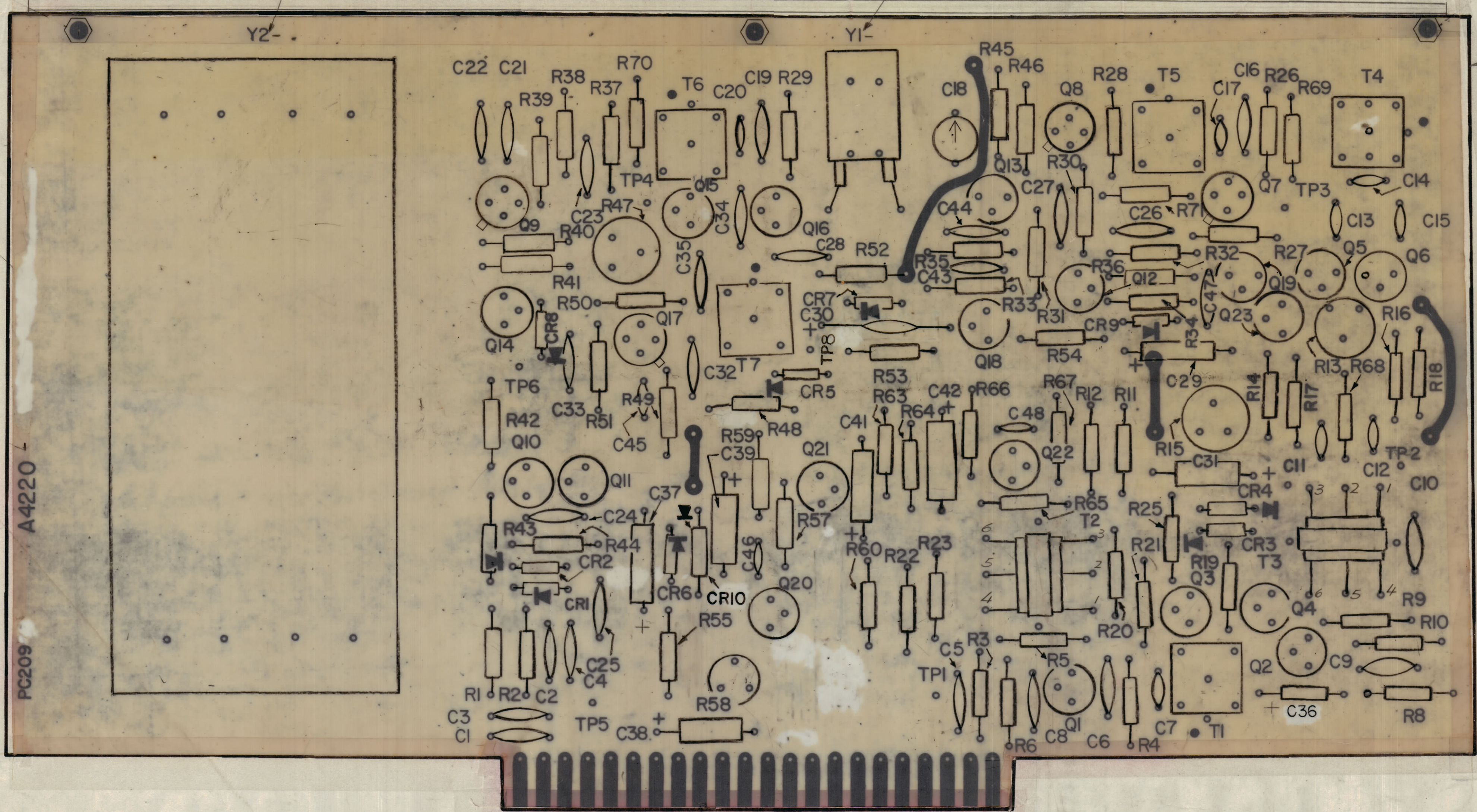
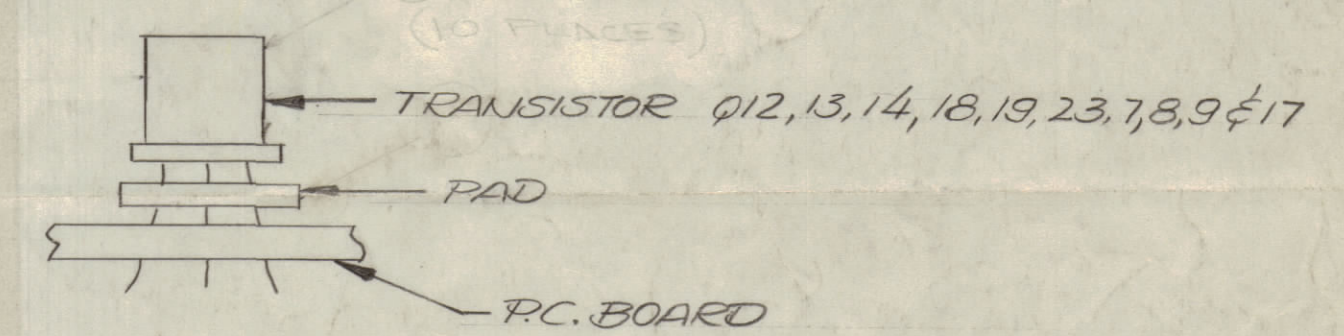
REVISIONS						
ZONE	BYM	DESCRIPTION	DATE	E.M.N. NO.	DRAFT	CHKD
X		CS WAS R7, IT 58 WAS CU, 44-48 TRAMS, IT 67 ADDED	7/13/65	X		
X1		ITEM 68 WAS PART OF ITEM 3				
X2		TP8 ADDED, SYMBOLS CLARIFIED	9/16/65	X2		
X3		IT 10 QTY WAS 2, 44-48 TRAMS DELETED, TT 69 ADDED	9/20/65	X3		
		TOLEANCE CLARIFIED				
A		ORIGINAL RELEASE FOR PRODUCTION				
B		IT 57 WAS CU12-4, IT 70, 71, 72 ADDED	10/16/65			
C		IT 48 WAS CE105-2-15, IT 45 QTY WAS 26, 34-36 ADD	10/16/65			
D		ITEMS 49 & 68 DELETED - BUILDUP UPDATED	12/16/65			
E		BUILDUP UPDATED - ASSY NG CHART - FILTER USE & CRYSTAL USE REVISED	1-10-66			
F		ITEM 58 WAS CE157-1, CMRA-1A ADDED U10 COL	1-17-67			
G		REV. CRYST. & FILT. CHIT. TO AGREE W/CK949	5-8-72			



MARK PER CHART

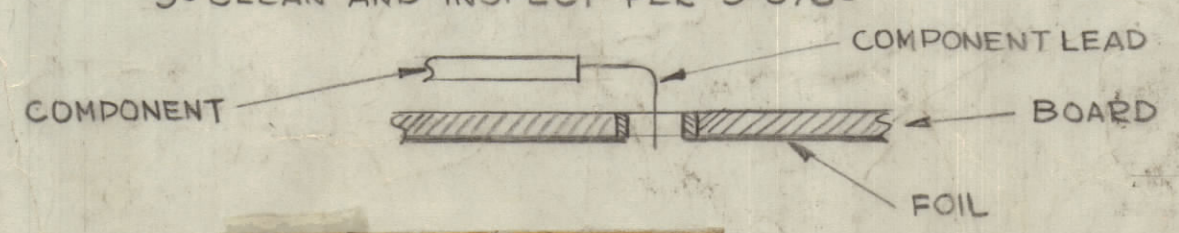
MARK PER CHART

(10 PLACES)  
MTG. DETAIL



TMC ASSY. NO	CRYSTAL FREQ.	CRYSTAL	CRYSTAL SYM.	FILTER	FILTER SYM.	BANDWIDTH	CHANNEL
A4220-1	1.75 MC	CR-109-81	Y1-1	W/FX216	Y2-1	1750.35Kc-1753.04Kc	CH-A1
-2	1.75 MC	CR-109-81	Y1-2	W/FX218	Y2-2	1746.96Kc-1749.65Kc	CH-B1
-3	1.75629 MC	CR-109-82	Y1-3	W/FX217	Y2-3	1753.25Kc-1755.94Kc	CH-A2
-4	1.74371 MC	CR-109-83	Y1-4	W/FX219	Y2-4	1744.06-1746.75Kc	CH-B2

- ASSEMBLY NOTICE
- 1- TO MOUNT COMPONENTS INSERT LEAD THROUGH PLATED-THRU HOLES ABOUT 1/16 AS SHOWN.
  - 2- APPLY HEAT & SOLDER TO LEAD & FOIL - CAUTION - TOO MUCH HEAT WILL CAUSE THE FOIL TO SEPARATE FROM THE BOARD.
  - 3- CLEAN AND INSPECT PER S-676.



4- FUNGUS PROOFING PER TMC SPECIFICATION S-113

REF. NPL A4220

QTY/UNIT	MODEL USED ON	ASSY. NO.
4	CMRA-1A	BMA180
4	CVRA-1	AS05A

REQ'D.	ITEM	PART NUMBER	DESCRIPTION	SYMBOL
X	3	BS100	SOLDER TIN ALLOY	
1	2	PC. 209	P.C. BOARD	
1	1	MS 4362	STIFFENER	

LIST OF MATERIAL

MATERIAL	TITLE
	THE TECHNICAL MATERIEL CORP. MAMARONECK, NEW YORK
	ASSY PRINTED CIRCUIT BOARD

SCALE	CODE	DATE	FINAL APPROVAL	DATE
2:1		6-30-65		

DECIMALS	TOLERANCES	FRACTIONS	ELECT. DES.	DATE
.X ± .05		± 1/64		
.XX ± .01		ANGLES ± 9° 30'		
.XXX ± .005				

THE CONTENTS OF THIS DRAWING ARE THE EXCLUSIVE PROPERTY OF THE TECHNICAL MATERIEL CORP. ITS UNAUTHORIZED USE OR REPRODUCTION IN WHOLE OR IN PART IS STRICTLY FORBIDDEN.

NOTES