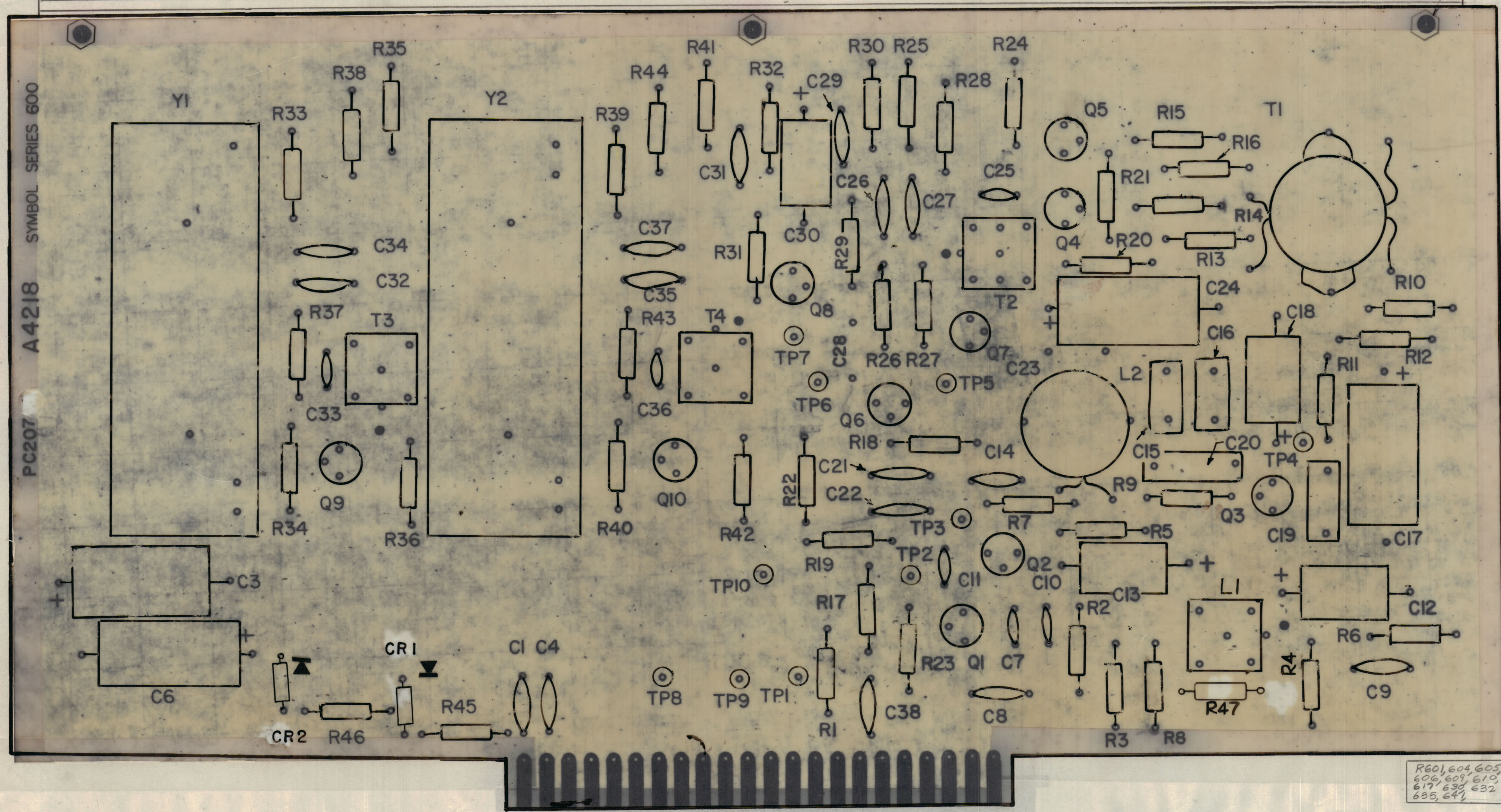


| REVISIONS |     |  |          |            |       |      |
|-----------|-----|--|----------|------------|-------|------|
| ZONE      | SYM | DESCRIPTION  | DATE     | E.M.N. NO. | DRAFT | CHKD |
| X1        |     | SYMBOL R629 ON ITEM 35 WAS R612  | 8-24-55  | X1         | GDL   |      |
| X2        |     | R47 ADDED  | 9/15/65  | X2         | RL    |      |
| X3        |     | IT 14 CHANGED TO DELETED. IT IS 60% WAS 3 COPT ADDED. IT WAS CC100-27 IT 40 WAS CC100-28 TOLERANCE CLARIFIED | 10/1/65  | X3         | ALL   |      |
| A         |     | ORIGINAL RELEASE FOR PRODUCTION  | 11/2/65  |            | XV    |      |
| B         |     | IT 48 WAS CHANGED TO IT 50 SYMBOLS ADDED IT 27 SW WAS 4888   | 12/26/65 | 14173      | HY    |      |
| B         |     | ITEMS 50 & 51 ADDED - QTY ITEM 5 WAS 15 QTY ITEM 29 WAS 4  | 5-11-66  | 16238      | GDL   |      |
| C         |     | DELE (1) ITEM 48 CHG TO ITEM 52  | 3-21-67  | 17993      | LAK   |      |



Q601, 603, 604, 605, 606, 607, 608, 609, 610

R602, 607, 611, 619, 628

R620, 621, 636, 642

R603, 608, 612, 638, 644

R614, R615, R629

R633, 634, 639, 640

R623, 624,

R601, 604, 605, 606, 607, 610, 617, 635, 632, 635, 637

C607, C625, C633, C636,

C603, C606, C617, C624

C601, 604, 621, 622, 623, 626, 627, 629, 631, 632, 634, 635, 637

| QTY | UNIT | MODEL USED ON | SYMB. NO. | DESCRIPTION        | SYMBOL                   |
|-----|------|---------------|-----------|--------------------|--------------------------|
| 1   | 52   | 2N3646        |           | TRANSISTOR         | Q602                     |
| 2   | 51   | 1N961B        |           | SECON. DEV.        | CR601, CR602, R645, R646 |
| 2   | 50   | RC20GF270J    |           | RES. FXD, COMP.    | R622, R623               |
| 1   | 49   | CM114R102J    |           | CAP. MET., MYLAR   | C615                     |
| 1   | 48   | 2N706         |           | TRANSISTOR         |                          |
| 1   | 47   | TT268         |           | XFMR, RF, ADJ      | T604                     |
| 1   | 46   | TT267         |           |                    | T603                     |
| 1   | 45   | TT266         |           |                    | T602                     |
| 1   | 44   | TT255         |           | XFMR, RF, ADJ      | T601                     |
| 3   | 43   | SCBP0440BNS   |           | SCR, MECH          |                          |
| 1   | 42   | RC20CF223J    |           | RES. FXD, COMP     | R647                     |
| 2   | 41   | RC20CF681J    |           |                    | R637, 643                |
| 1   | 40   | RC20CF562J    |           |                    | R618                     |
| 5   | 39   | RC20CF472J    |           |                    | R622, 626                |
| 2   | 38   | RC20CF471J    |           |                    |                          |
| 4   | 37   | RC20CF470J    |           |                    |                          |
| 5   | 36   | RC20CF332J    |           |                    |                          |
| 3   | 35   | RC20CF222J    |           |                    |                          |
| 1   | 34   | RC20CF221J    |           |                    | R627                     |
| 2   | 33   | RC20CF152J    |           |                    | R625, 631                |
| 4   | 32   | RC20CF122J    |           |                    |                          |
| 2   | 31   | RC20CF103J    |           |                    | R613, 616                |
| 11  | 30   | RC20CF102J    |           |                    |                          |
| 2   | 29   | RC20CF101J    |           |                    |                          |
| 1   | 28   | PC207         |           | RES. FXD, COMP     |                          |
| 1   | 27   | FX222         |           | PRINTED CIRCUIT BD |                          |
| 1   | 26   | FX221         |           | FIL BP, 1756.29KG  | Y602                     |
| 1   | 25   | FX220         |           | FIL BP, 1743.71KG  | Y601                     |
| 4   | 25   | NTH0632BNS    |           | NUT, PLN, HEX      |                          |
| 3   | 24   | NTH0440BNS    |           | NUT, PLN, HEX      |                          |
| 1   | 23   | MS4362        |           | STIFFNER           |                          |
| 4   | 22   | LWE06MRN      |           | WASH., LK, EXT     |                          |
| 3   | 21   | LWE04MRN      |           | WASH., LK, EXT     |                          |
| 4   | 20   | FW06HBN       |           | WASH., FLAT        |                          |
| 3   | 19   | FW04HBN       |           | WASH., FLAT        |                          |
| 1   | 18   | CM112F132J5S  |           | CAP., FXD, MICA    | C614                     |
| 1   | 17   | CM112F103F1S  |           |                    | C619                     |
| 1   | 16   | CM111F681J5S  |           |                    | C610                     |
| 4   | 15   | CM111F151J5S  |           |                    |                          |
| 14  |      | DELETED       |           |                    |                          |
| 1   | 13   | CM111F102J5S  |           | CAP., FXD, MICA    | C616                     |
| 1   | 12   | CM111F101J5S  |           | CAP., FXD, MICA    | C611                     |
| 1   | 11   | GL374         |           | COLL, RF, ADJ      | L601                     |
| 4   | 10   | CE105-50-25   |           | CAP., FXD, ELECT.  |                          |
| 2   | 9    | CE105-20-50   |           |                    | C612, 613                |
| 1   | 8    | CE105-10-25   |           |                    | C615                     |
| 1   | 7    | CE105-2-50    |           | CAP., FXD, ELECT.  | C630                     |
| 2   | 6    | CC112R474M    |           | CAP., FXD, CER     | C608, 609                |
| 13  | 5    | CC100-28      |           | CAP., FXD, CER     | C620                     |
| 1   | 4    | CM114-R152J   |           | CAP., MET, MYLAR   | C628                     |
| 2   | 3    | CC100-16      |           | CAP., FXD, CER     | C628, 638                |
| 2   |      | BS100         |           | SOLDER, TIN ALY    |                          |
| 1   | 1    | AC212         |           | COLL, RF, ADJ      | L602                     |

**ASSEMBLY NOTICE**

- 1 - TO MOUNT COMPONENTS INSERT LEAD THROUGH PLATED-THRU HOLES & BEND ABOUT 1/16 OF LEAD OVER COPPER FOIL AS SHOWN
- 2 - APPLY HEAT & SOLDER TO LEAD & FOIL - CAUTION - TOO MUCH HEAT WILL CAUSE THE FOIL TO SEPARATE FROM THE BOARD.
- 3 - CLEAN AND INSPECT PER S-676.

COMPONENT LEAD BOARD FOIL

- 4 - FUNGUS PROOFING PER TMC SPECIFICATION S-113

| LIST OF MATERIAL  |        | THE TECHNICAL MATERIEL CORP. |        |
|---|--------|------------------------------|--------|
| MATERIAL  | FINISH | MAMARONECK, NEW YORK         |        |
|   |        | TITLE                        |        |
|   |        | ASSY PRINTED CIRCUIT BOARD   |        |
| QTY   | UNIT   | SCALE                        | DATE   |
| 2-1   |        | 2-1                          | 7-2-60 |
| UNLESS OTHERWISE SPECIFIED DIMENSIONS ARE IN INCHES AND INCLUDE CHEMICALLY APPLIED OR PLATED FINISHES |        | DRAWN                        | DATE   |
|   |        | GDL                          | 7-2-60 |
|   |        | CHECKED                      | DATE   |
|   |        |                              |        |
| DECIMALS ±.05   |        | ELECT. DES.                  | DATE   |
| XX ±.01   |        | MECH. DES.                   | DATE   |
| XXX ±.005   |        |                              |        |
| FRACTIONS ± 1/64  |        | FINAL APPROVAL               |        |
| ANGLES ± 0° 30'   |        | DATE                         |        |
|   |        | A4218                        |        |
|   |        | SHEET                        |        |
|   |        | 1                            |        |
|   |        | REV. LTR.                    |        |
|   |        | C                            |        |

CMRA-1 15059

THE CONTENTS OF THIS DRAWING ARE THE EXCLUSIVE PROPERTY OF THE TECHNICAL MATERIEL CORP. ITS UNAUTHORIZED USE OR REPRODUCTION IN WHOLE OR IN PART IS STRICTLY FORBIDDEN.

NOTES