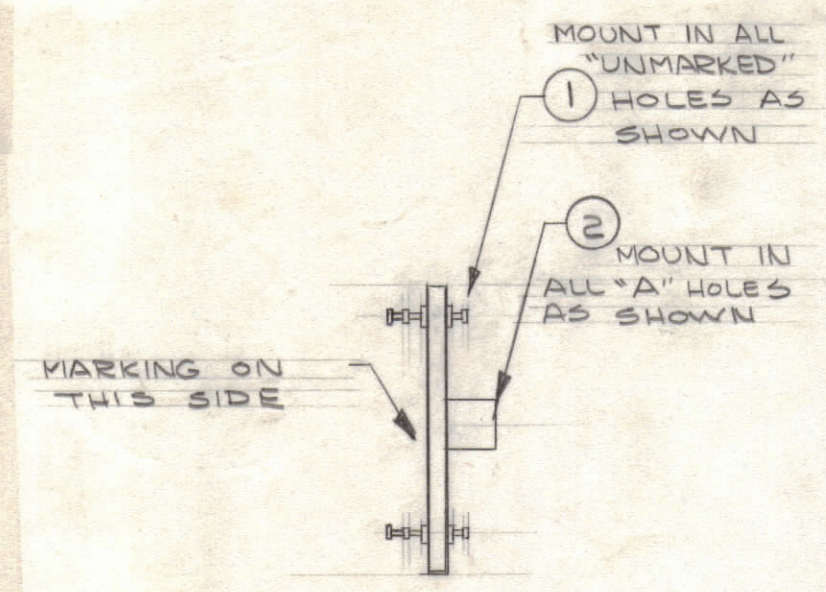


MACHINING (A4199-1).

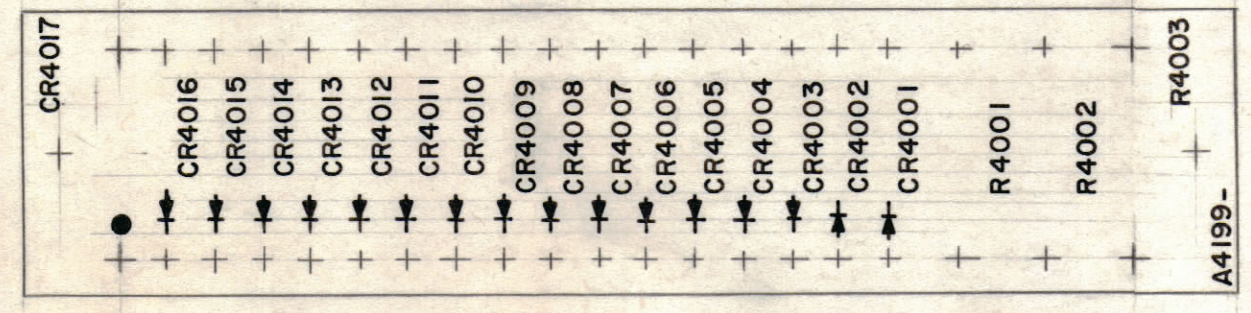


SUB ASSY (A4199-3)

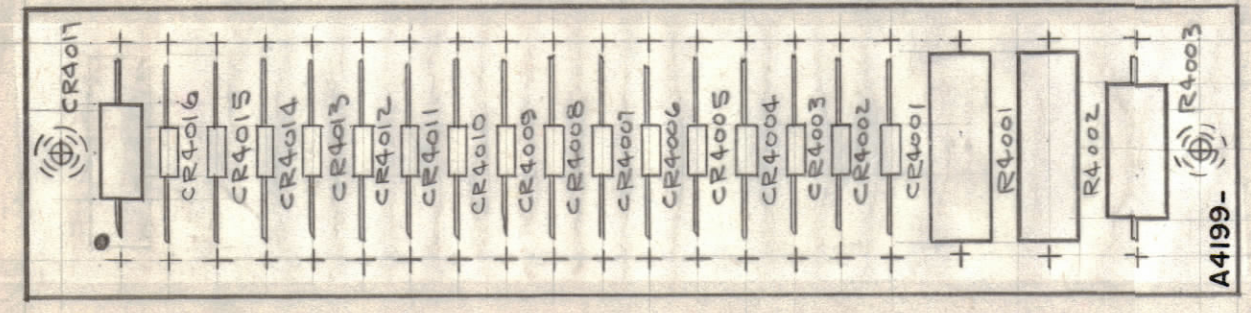
REVISIONS						
ZONE	SYM	DESCRIPTION	DATE	E.M.N. NO.	DRAFT	CHKD APPD
B2	X1	ITEM (1) WAS TEIG8-2-C	4-13-65	X1	[Signature]	[Signature]
C2	X2	ITEM (1) WAS PX100-1-148	7-22-65	X2	[Signature]	[Signature]
		ORIGINAL RELEASE FOR PRODUCTION	4.10.69		GE	

UNLESS OTHERWISE SPECIFIED

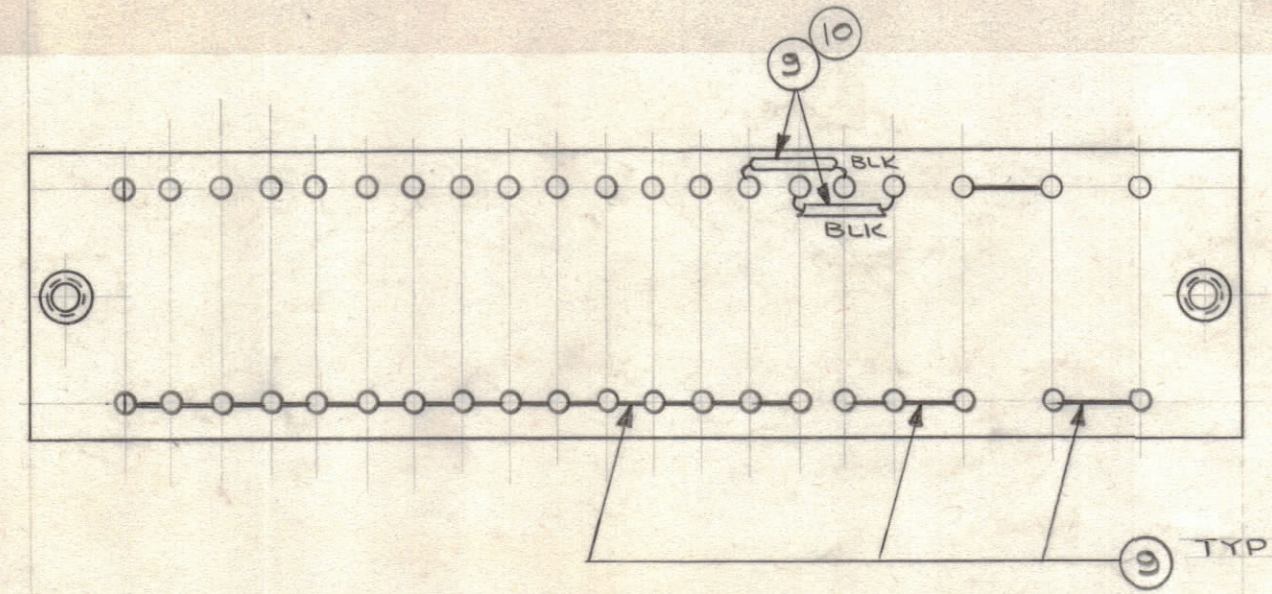
- 1-MARKING PROCESS: PER TMC SPEC S-727
- 2-MARKING TO BE 3/32 HIGH BLACK GOTHIC
- 3-ALL DOTS TO BE 1/16 DIA, RED
- 4-MARK TMC P/N, WITH LATEST REV. LETTER.
- 5-FUNGUS PROOF PER TMC SPEC S-113



MARKING (A4199-2)



TOP VIEW



BOTTOM VIEW

ELECTRICAL ASSY (A4199-4)

Q'TY./UNIT	MODEL USED ON	ASSY. NO.	REQ'D.	ITEM	PART NUMBER	DESCRIPTION	SYMBOL
			X	11	BS100	SOLDER, TIN ALLOY	
			X	10	PX104-1-034	SLEEVING, INSULATION	BLACK
			X	9	WL100-7	WIRE, BUSS-BAR	
			1	8	DD111-1	ABSORBER, OVV	CR4017
			4	7	IN2484	DIODE	CR4001 To CR4004
			12	6	IN270	DIODE	CR4005 To CR4016
			1	5	RC42GF102J	RESISTOR, FIXED, COMP.	R4003
			1	4	RW107-20	RESISTOR, FIXED, WW	R4002
			1	3	RW107-54	RESISTOR, FIXED, WW	R4001
			2	2	TE108-2	NUT, PLAIN, CLINCH	A
			40	1	TE168-4-C	TERMINAL, STUD	

F. EATON LIST OF MATERIAL FORMALLY E3162B-14			
MATERIAL		THE TECHNICAL MATERIEL CORP.	
FINISH		TITLE	
3/32 THK EPOXY G-11		TERMINAL BOARD ASSY	
LAMINATE GREEN			
UNLESS OTHERWISE SPECIFIED DIMENSIONS ARE IN INCHES AND INCLUDE CHEMICALLY APPLIED OR PLATED FINISHES		DRAWN	DATE
SCALE 1:1		3/12-65	FINAL APPROVAL
CODE A		5/22/65	DATE
ASSY. NO. RSBA-1		A4199	
THE CONTENTS OF THIS DRAWING ARE THE EXCLUSIVE PROPERTY OF THE TECHNICAL MATERIEL CORP. ITS UNAUTHORIZED USE OR REPRODUCTION IN WHOLE OR IN PART IS STRICTLY FORBIDDEN.		ELECT. DES.	DATE
DECIMALS .X ± .05 .XX ± .01 .XXX ± .005		MECH. DES.	DATE
FRACTIONS ± 1/64 ANGLES ± 0° 30'		SHEET	
TOLERANCES		REV. LTR.	

NOTES

A4199 6614