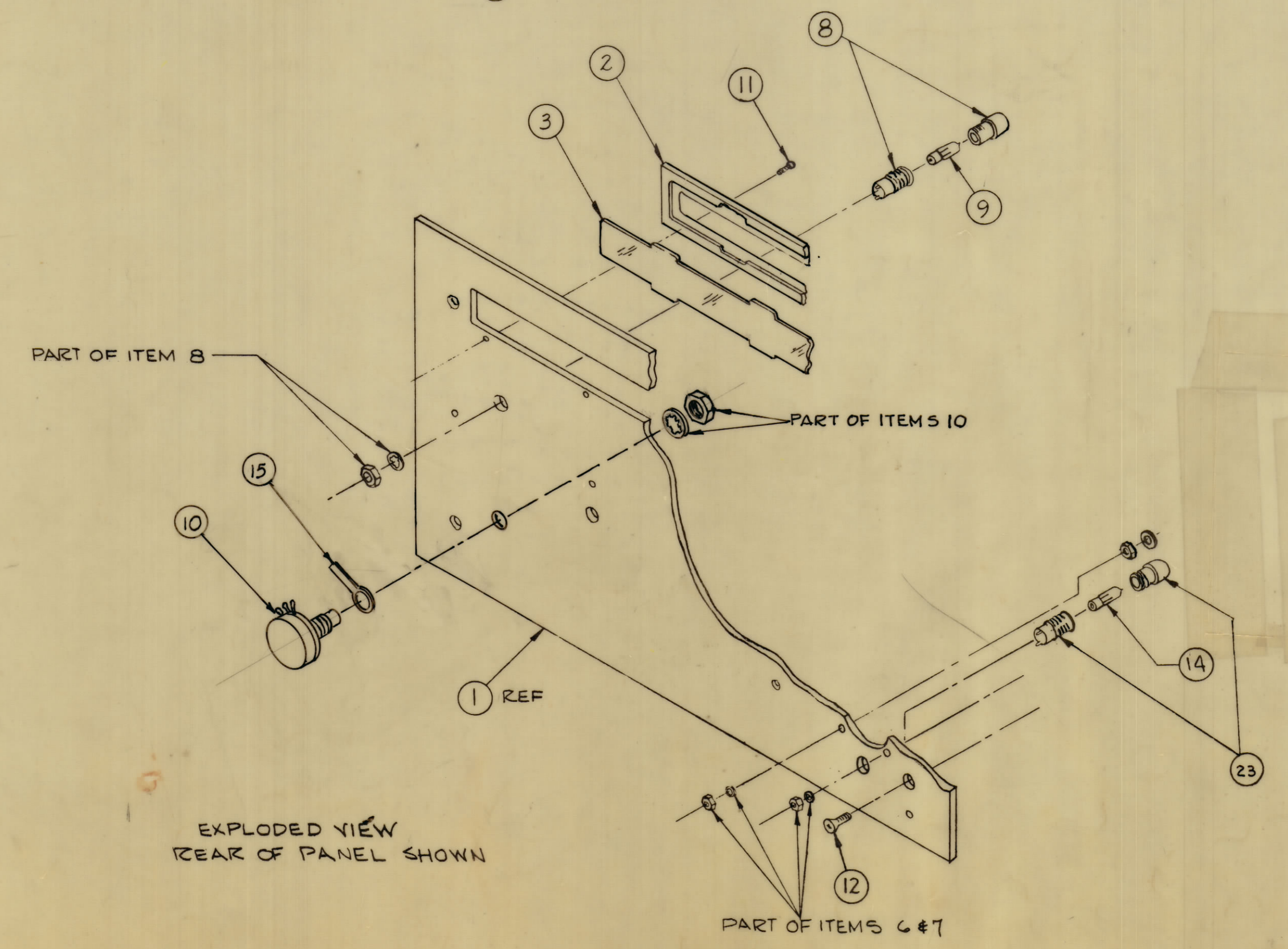
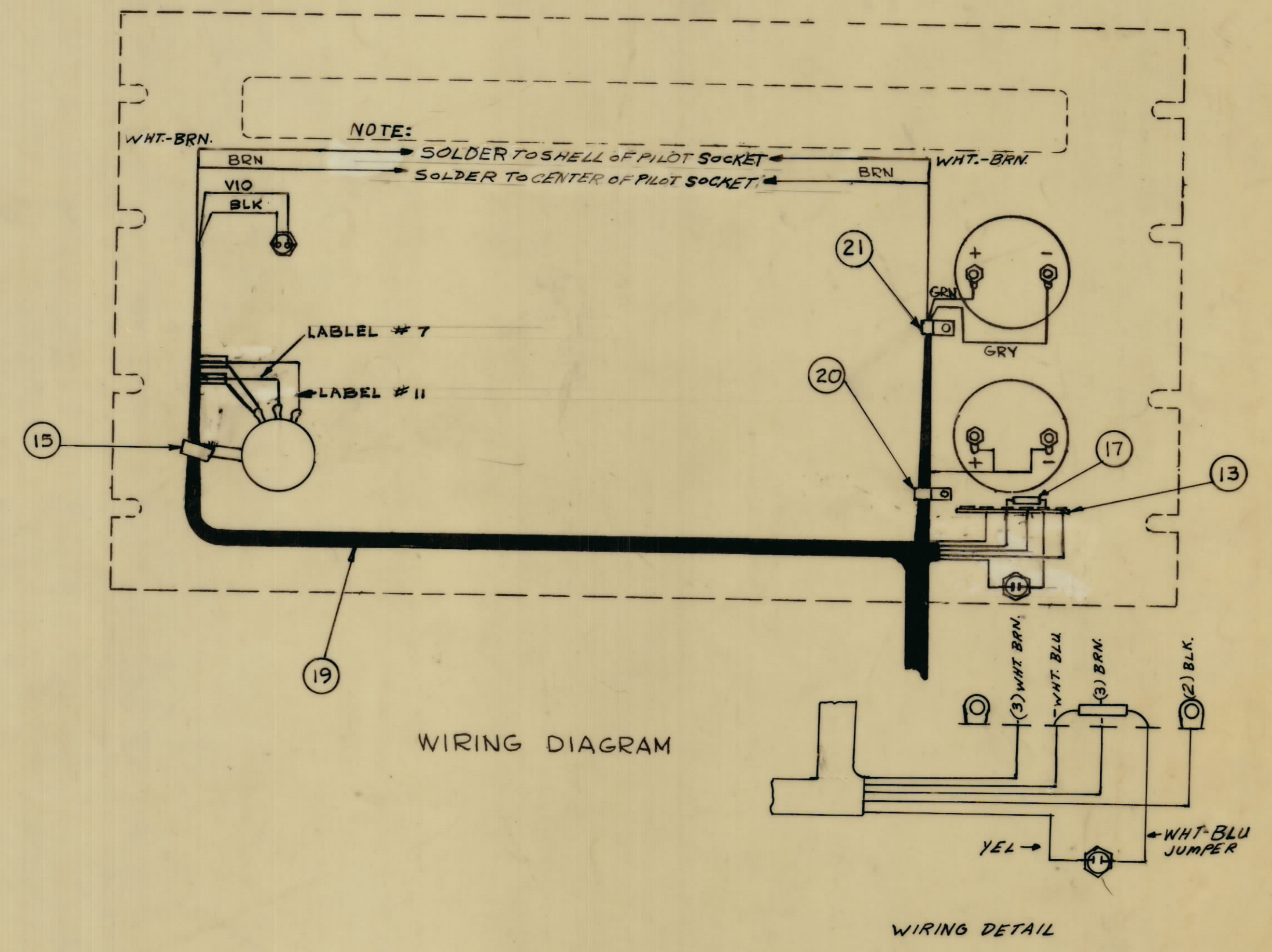
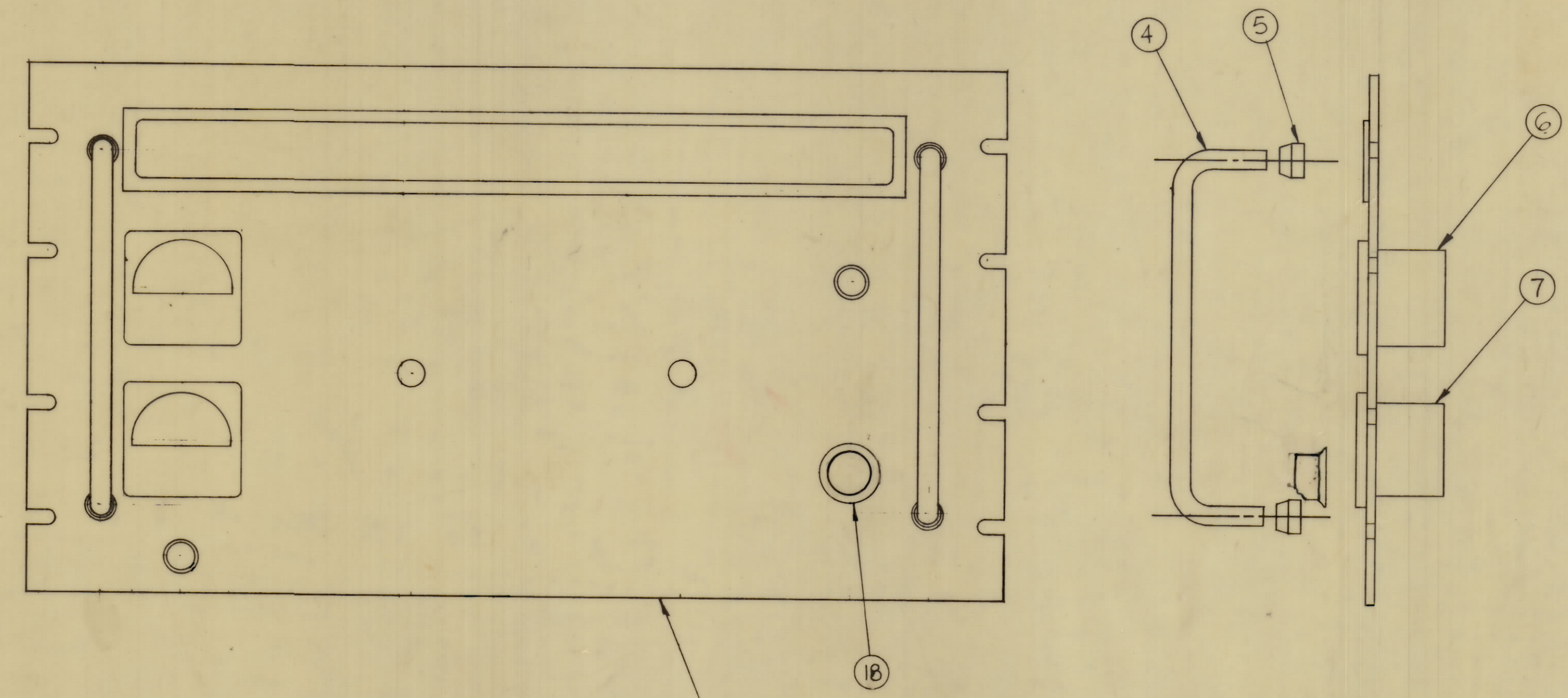


ZONE		SYM	DESCRIPTION	DATE	E.M.N. NO.	DRAFT	CHKD	APPD
X1			ITEM 16 WAS RC20GF20J - ITEM 21 WAS PK104-1-085 ITEM 10 WAS RV4AT4104B - ITEM 7 WAS 149 & ITEM 1 MS 3781/LD1623 - ITEMS 20 & 15 REQ'D WERE 2 EA.	3-24-65			G.D.L.	
0			ORIGINAL RELEASE	3-25-65			G.D.L.	
5A/BC		A	CLERICAL CHANGE	3-28-65			G.D.L.	
B			IT 18 PIN WAS MP123-4-F-B; ASSY PROCEDURE NOTES DELE.	4-2-65	13829			
E4		C	B/M: IT 18 WAS RV4AY5D300A; IT 18 WAS MP123-4-F-B; WIRING DIAGRAM CLARIFIED; ASSY. NO. ADDED.	4-26-65	13929			
D			IT 10 - WIRING SHIELDS REVISED	6-17-65	14242		D.V.K.	
E			IT 10 - WIRING SHIELDS REVISED	8-2-65	14735			
F			WIRING REVISED. NOTES AND DETAIL ADDED	9-26-65	14875		X.V.I.	



QTY	ITEM	PART NUMBER	DESCRIPTION	SYMBOL
1	23	TS153-1	LIGHT INDICATOR	XDS1006
X	22	BS100	SOLDER, TIN ALY	
1	21	CU102-1	CLAMP, LOOP - 1/8 D	
1	20	CU102-2	CLAMP, LOOP - 3/16 D	
1	19	CA1027	WIRING, HARNESS BRANCHED	
1	18	MP123-5FB	KNOB	
1	17	RC32GF221K	RESISTOR, FXD, COMP	R1065
		DELETED	#	
1	15	TE111-2	TERMINAL, LUG - 3/8 D	
1	14	BI110-7	LAMP, INCANDESCENT	DS1006
1	13	TM117-26	TERMINAL BOARD - LUG	
4	12	SCFP1032559	SCREW, MACHINE	
10	11	SC143-0348F4B	SCREW MACH (NYLON)	
1	10	RV4NAYSD251A	RESISTOR, VAR - COMP	R1011
1	9	BI111-1	LAMP, GLOW	DS1001
1	8	TS154-5	LIGHT, INDICATOR	XDS1001
1	7	MR149	METER, ARB SCALE	M1002
1	6	MR160	METER, ARB SCALE	M1001
4	5	CU139-2B	FERRULE, HANDLE	
2	4	HA10210BN	HANDLE	
1	3	PX661	WINDOW, FRONT PANEL	
1	2	PM1108	PLATE, ESCUTCHEON	
1	1	LD1744/MS426B	PANEL, FRONT, MACHINING	

REQ'D. ITEM		PART NUMBER		DESCRIPTION		SYMBOL	
J. ANGER LIST OF MATERIAL							
MATERIAL				FINISH			
THE TECHNICAL MATERIEL CORP.				THE TECHNICAL MATERIEL CORP.			
MAMARONECK, NEW YORK				MAMARONECK, NEW YORK			
TITLE				TITLE			
FRONT PANEL ASSY				FRONT PANEL ASSY			
SCALE		DO NOT SCALE		UNLESS OTHERWISE SPECIFIED		DIMENSIONS ARE IN INCHES AND INCLUDE	
A		A		CHEMICALLY APPLIED OR PLATED FINISHES		DRAWN	
G.D.L.		1-22-65		CHECKED		DATE	
3/21/65		3/21/65		ELECT. DATE		DATE	
MECH. DES.		DATE		DATE		DATE	
A 4146		F		A 4146		F	

NOTES

A4146