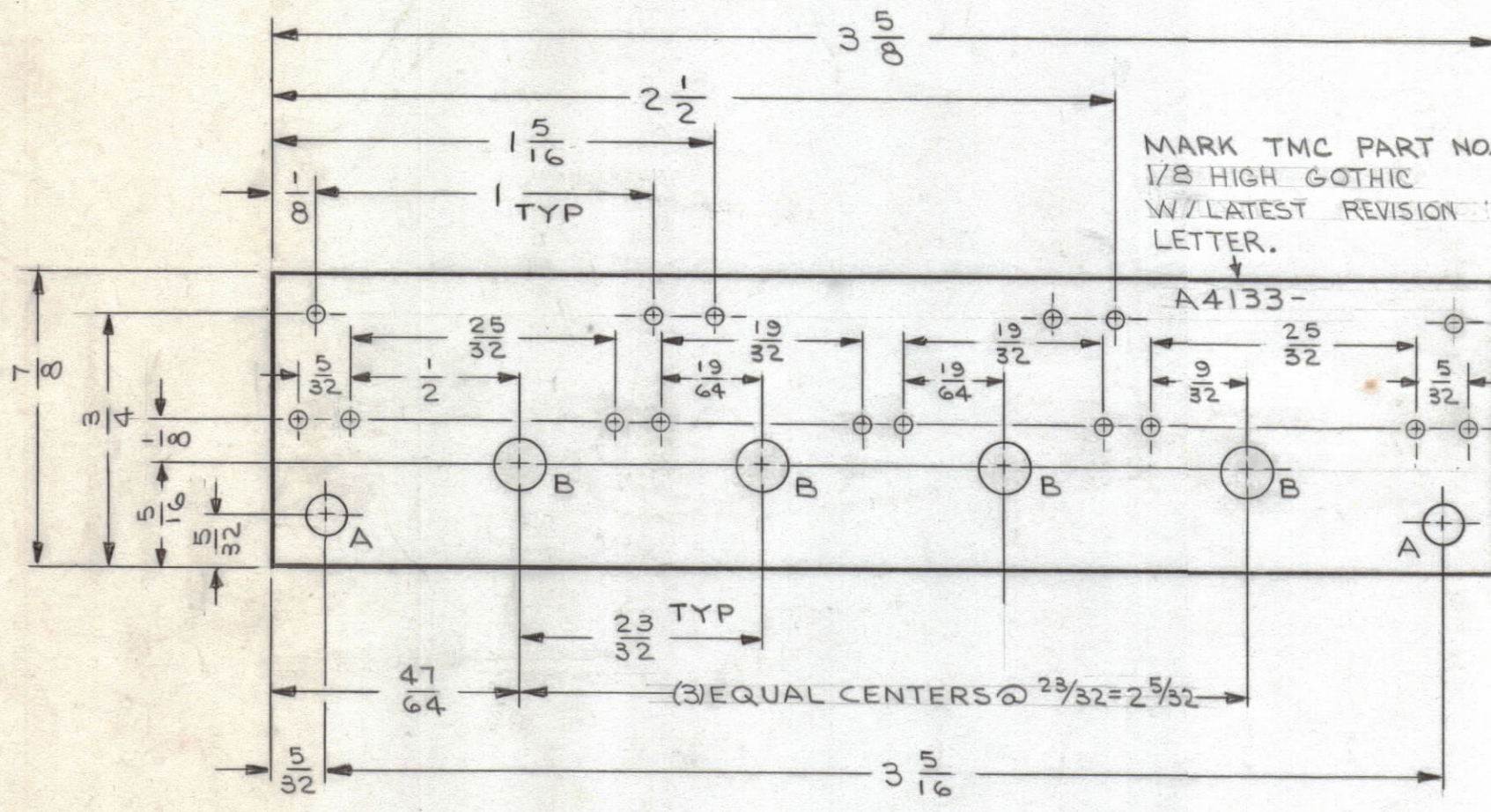


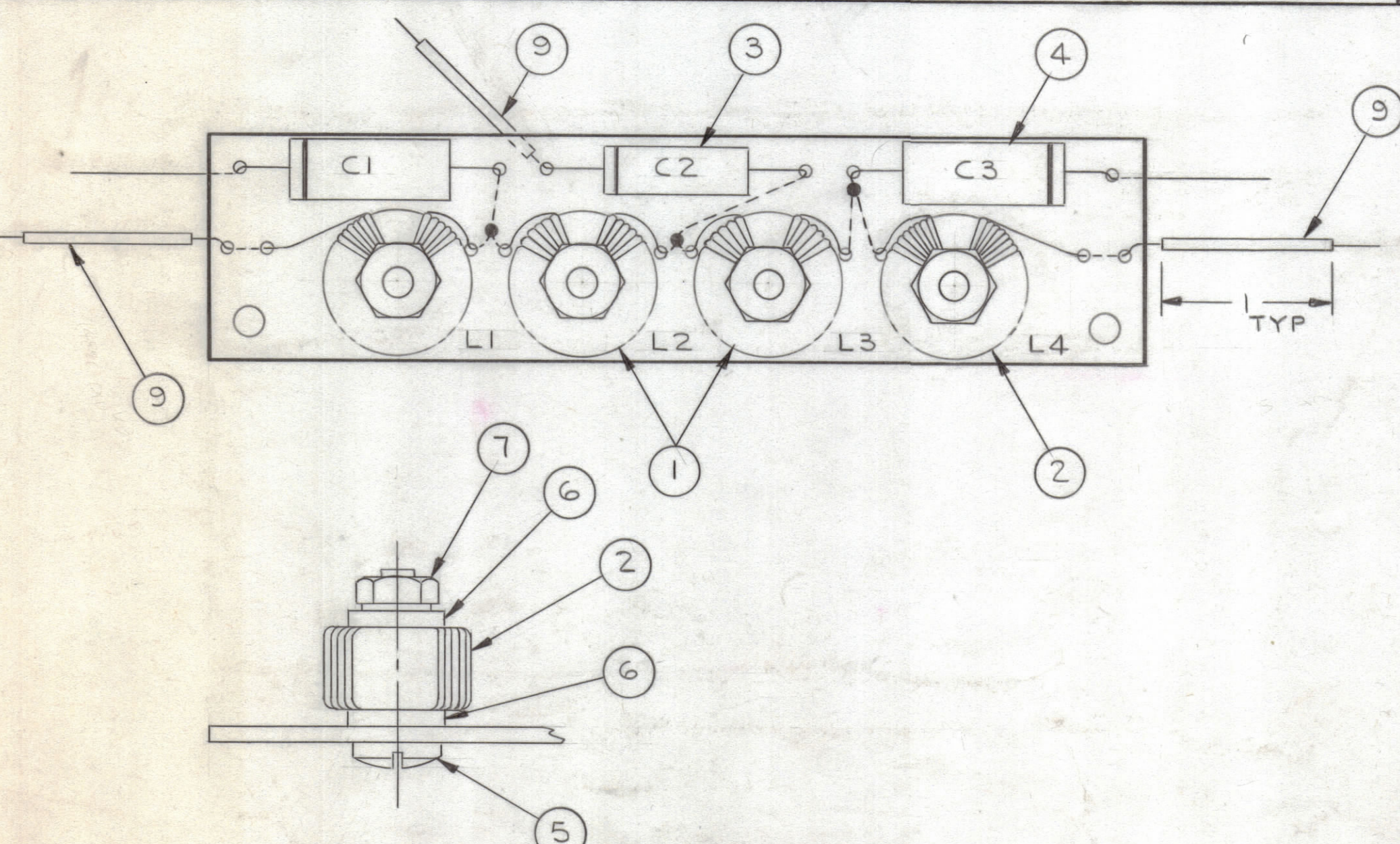
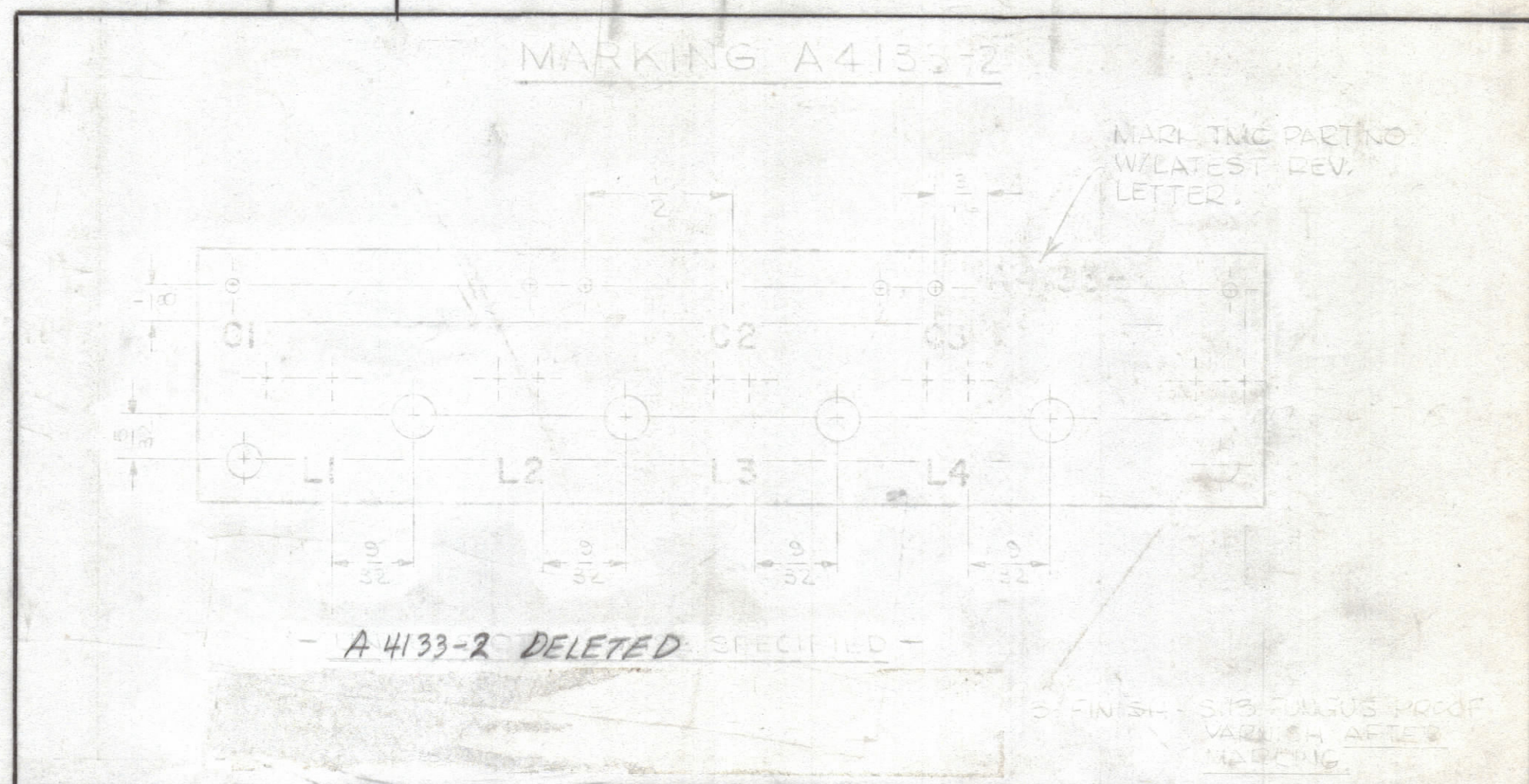
HOLE LEGEND		
HOLE	DESCRIPTION	REQ'D
A	Nº 31 (.1200) DRILL	2
B	Nº 18 (.1695) DRILL	4
UNMARKED	Nº 60 (.0400) DRILL	16

MATERIAL:
.062 THICK PHENOLIC XXXP NATURAL

REVISIONS						
ZONE	SYM	DESCRIPTION	DATE	E.M.N. NO.	DRAFT	CHKD APPD
	A	COMPLETELY REDRAWN & REVISED; DWG SIZE WAS 2.	3/14/65	14777	JL	JCS MM
	B	DELE. - 2 MARKING PICT. ADD P/N MARKING NOTE	3-15-66	16873	RME	JCS MM



MACHINING A4133-1



ELECTRICAL ASSY A4133-3

- WIRING PROCEDURE -
1. INTERCONNECT SELF LEADS OF COMPONENTS ON SIDE OPPOSITE COMPONENT MTG. AS INDICATED BY BROKEN LINES.
 2. SOLDER COMMON JUNCTIONS OF RESPECTIVE COMPONENT LEADS TOGETHER AS INDICATED BY BLACK DOT USING ITEM 8.
 3. BRING OUT SELF LEADS AS SHOWN ON COILS L1, L2 AND CAPACITOR C2 AND CUT LENGTH OF 1 1/2" FROM EDGE OF TERMINAL BOARD.
 4. BRING OUT SELF LEADS AS SHOWN ON C1 AND C3 AND CUT TO LENGTH OF 1" FROM EDGE OF TERMINAL BOARD.

A4133 B

REQ'D.	ITEM	PART NUMBER	DESCRIPTION	SYMBOL
3	9	PX104-0-034	INSULATION SLEEVING, SZ. 20	WHT.
X	8	BS100	SOLDER, TIN ALLOY	
4	7	NT137-0832	NUT, PLAIN, HEX, N	
8	6	FW101-4	WASH., NM, N	
4	5	SC143-0832B10	SCREW, MACHINE-NYLON	
2	4	CN112A154F1	CAP., FXD, MTLZ, P	C1,3
1	3	CN112A104F1	CAP., FXD, MTLZ, P	C2
2	2	CL351	COIL, RF	L1,4
2	1	CL350	COIL, RF	L2,3

LIST OF MATERIAL				
MATERIAL		AS NOTED		
FINISH		//		
UNLESS OTHERWISE SPECIFIED DIMENSIONS ARE IN INCHES AND INCLUDE CHEMICALLY APPLIED OR PLATED FINISHES		THE TECHNICAL MATERIEL CORP. MAMARONECK, NEW YORK		
DECIMALS .X ± .05 .XX ± .01 .XXX ± .005		TOLERANCES ± 1/64 ANGLES ± 0° 30'		
DRAWN J. LESHINSKI		DATE 3/14/65		
CHECKED JCS		DATE 3/14/65		
ELECT. DES.		DATE 3/14/65		
MECH. DES.		DATE 3/14/65		
SHEET		SHEET		

Q'TY./UNIT	MODEL USED ON	ASSY. NO.
SCALE 2/1	CODE	

NOTES

THE CONTENTS OF THIS DRAWING ARE THE EXCLUSIVE PROPERTY OF THE TECHNICAL MATERIEL CORP. ITS UNAUTHORIZED USE OR REPRODUCTION IN WHOLE OR IN PART IS STRICTLY FORBIDDEN.