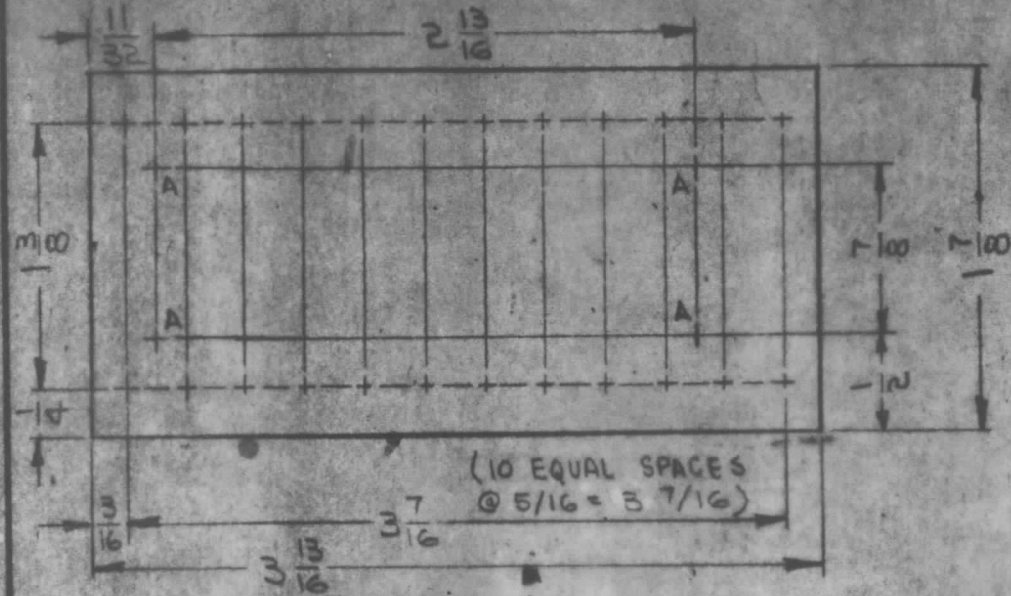
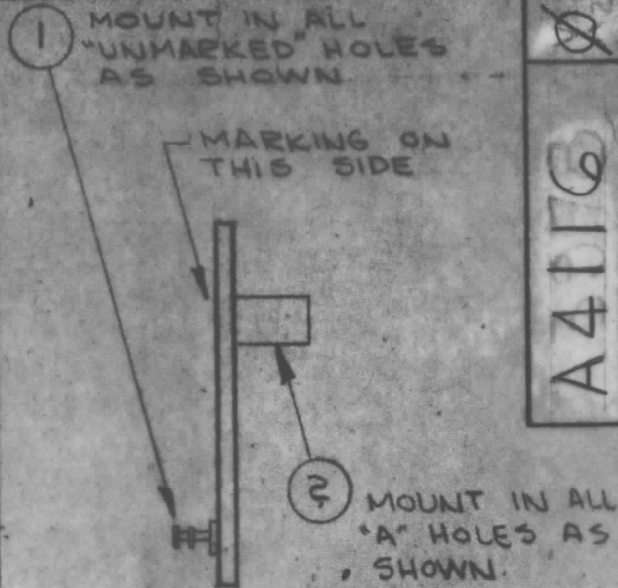


HOLE	DESCRIPTION	REQ.
UNMARKED	3/32 DIA	24
A	.188 DIA	4



MACHINING (A4116-1)

MAT'L: 3/32; G10 EPOXY GLASS LAMINATE GREEN.

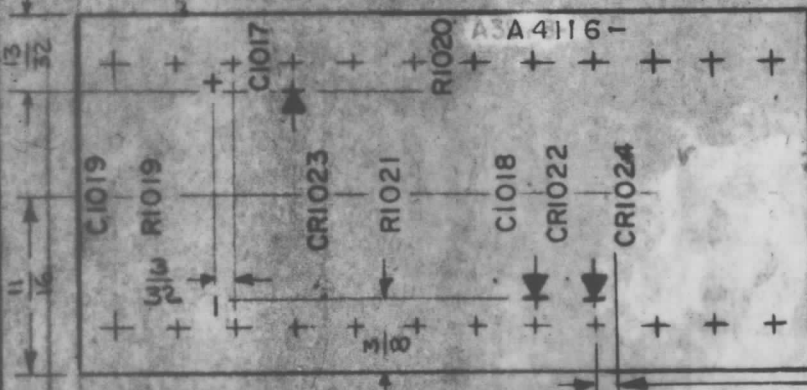


SUB ASSY (A4116-3)

A4116

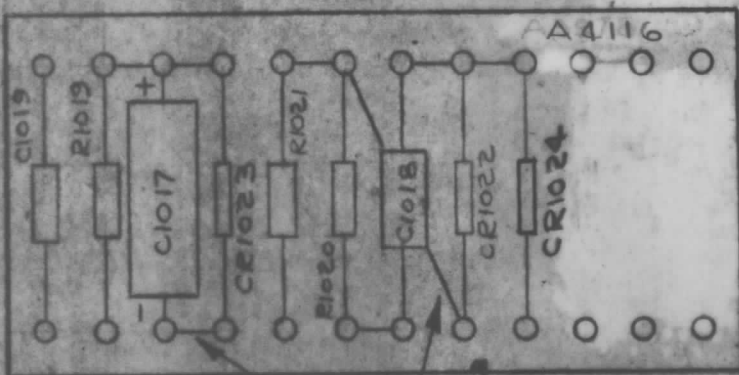
REVISIONS

SYMBOL	DESCRIPTION	DATE	E.E.N. NO.	DRAFT	CHKD	APPD
X	EXPER. RELEASE	4/23/64	X	J.S.		
Ø	ORIGINAL RELEASE FOR PRODUCTION	9/28/69		W		



UNLESS OTHERWISE SPECIFIED
 1-MARKING PROCESS PER TMC SPEC S727.
 2-MARKING 3/32 HIGH BLACK GOTHIC,
 LOCATED AS SHOWN.
 3-MARK TMC PART NO. WITH LATEST REVISION
 LETTER.
 4-FUNGUS PROOF PER TMC SPEC S113.

5/32 TYP. FOR ALL C, CR & R SYMBOLS
 MARKING (A4116-2)



ELECTRICAL ASSY (A4116-4)

(ARCD-1 SYSTEM)

RTPE-1		
QTY./UNIT	MODEL USED ON	ASSY. NO.
SCALE 1/1	CODE A	

THE CONTENTS OF THIS DRAWING ARE THE EXCLUSIVE PROPERTY OF THE TECHNICAL MATERIEL CORP. ITS UNAUTHORIZED USE OR REPRODUCTION IN WHOLE OR IN PART IS STRICTLY FORBIDDEN.

REQ'D.	ITEM	PART NUMBER	DESCRIPTION	SYMBOL
1	11	CCH2R-474-2	CAPACITOR, FIXED, CERAMIC	C1019
X	10	WL100-9	WIRE, ELEC, BUSS - # 26	
X	9	BS100	SOLDER, TIN ALLOY	
1	8	RC20GF473J	RESISTOR, FIXED, COMPOSITION	R1020
1	7	RC20GF471J	RESISTOR, FIXED, COMPOSITION	R1019
1	6	RC20GF102J	RESISTOR, FIXED, COMPOSITION	R1021
1	5	CN114-R10-5-J	CAPACITOR, FIXED, METALIZED PAPER	C1018
1	4	CE105-50-25	CAPACITOR, FIXED, ELECTROLYTIC	C1017
3	3	1N270	DIODE	CR1022 TO CR1024
4	2	TE108-12	NUT, PLAIN, CLINCH	A
24	1	TE127-5	TERMINAL, STUD	

F. EATON LIST OF MATERIAL		THE TECHNICAL MATERIEL CORP. MAMARONECK, NEW YORK	
MATERIAL	SEE MACHINING	TITLE	TERMINAL BOARD ASSY.
FINISH	SEE MACHINING		

UNLESS OTHERWISE SPECIFIED DIMENSIONS ARE IN INCHES AND INCLUDE CHEMICALLY APPLIED OR PLATED FINISHES		DRAWN G.J. Jensen	DATE 4/23/64	FINAL APPROVAL J.M.	DATE 9/25/69
DECIMALS X ± .05 XX ± .01 XXX ± .005	TOLERANCES	ELECT. DES.	DATE	A4116	Ø
FRACTIONS ± 1/64 ANGLES ± 0° 30'		MECH. DES.	DATE		
		SHEET		REV. 1/79	

NOTES