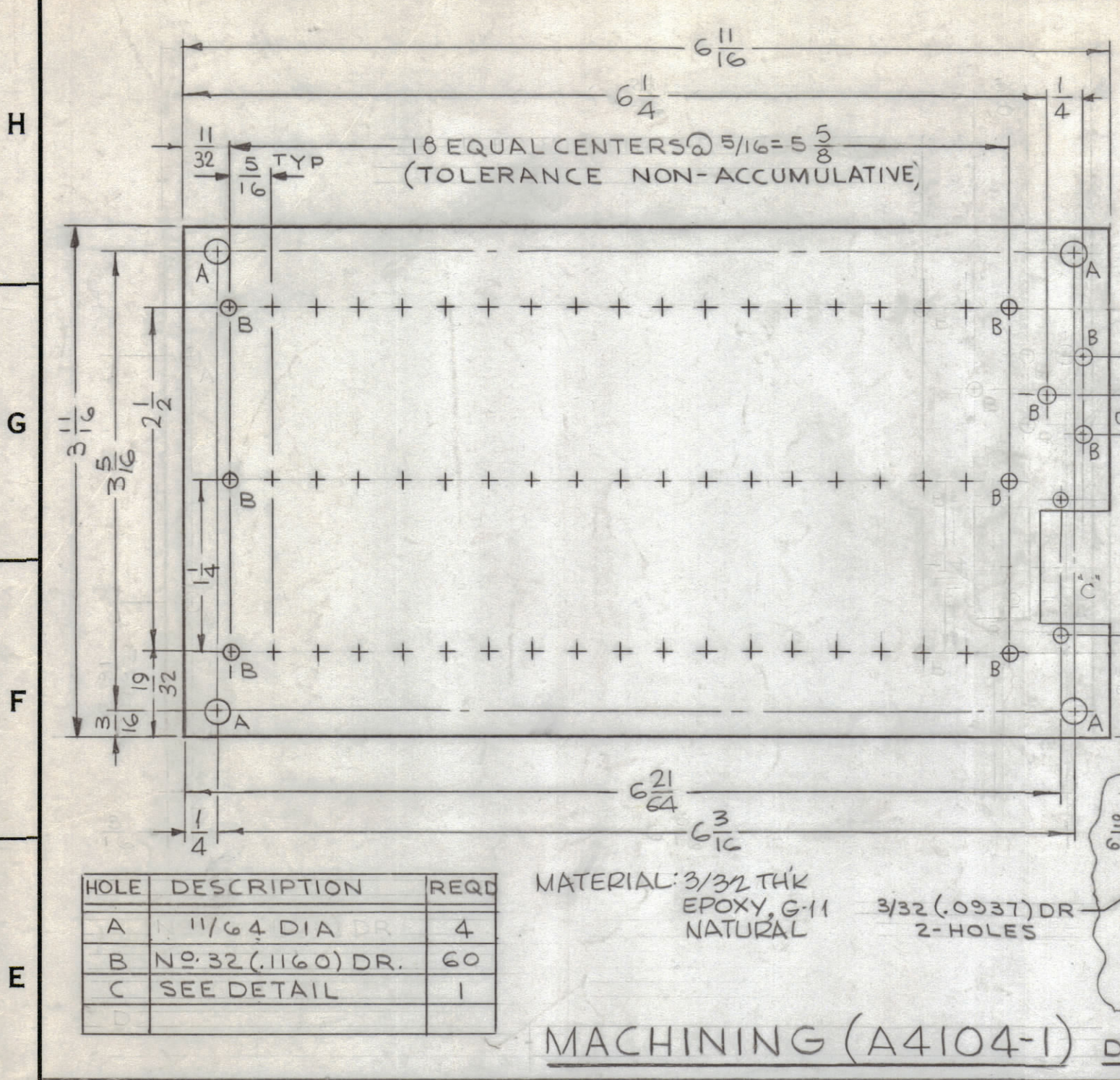


Revision notes table with columns for zone, sym, and description. Includes notes about IT.19, IT.15, IT.5, IT.21, IT.22, IT.23, IT.24, and original release for production.

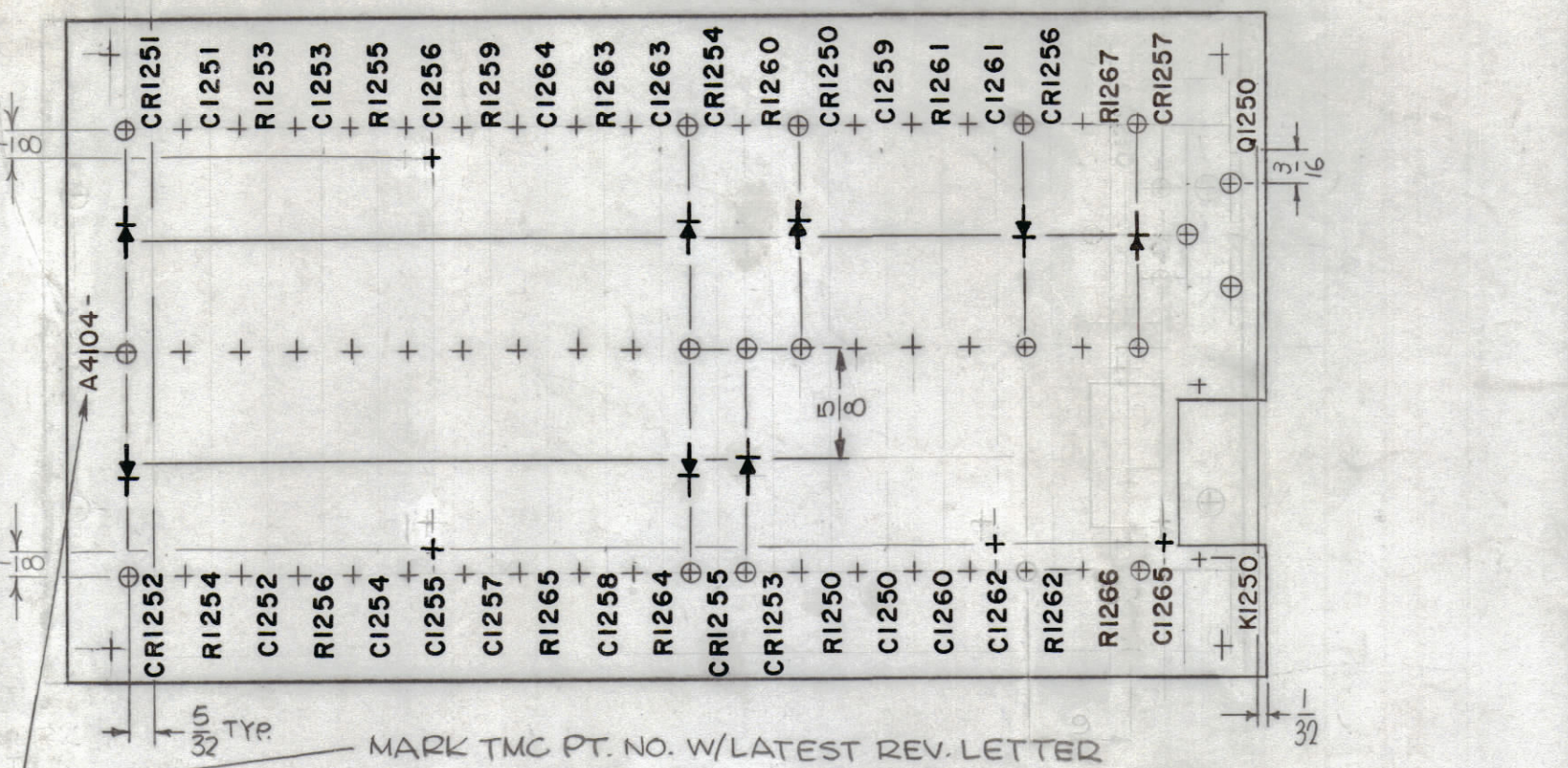
REVISIONS table with columns: ZONE, SYM, DESCRIPTION, DATE, E.M.N. NO., DRAFT, CHKD, APPD. Includes entries X1 through X4 detailing experimental release, marking, and board modifications.



HOLE	DESCRIPTION	REQD
A	1 1/64 DIA	4
B	NO. 32 (.1160) DR.	60
C	SEE DETAIL	1

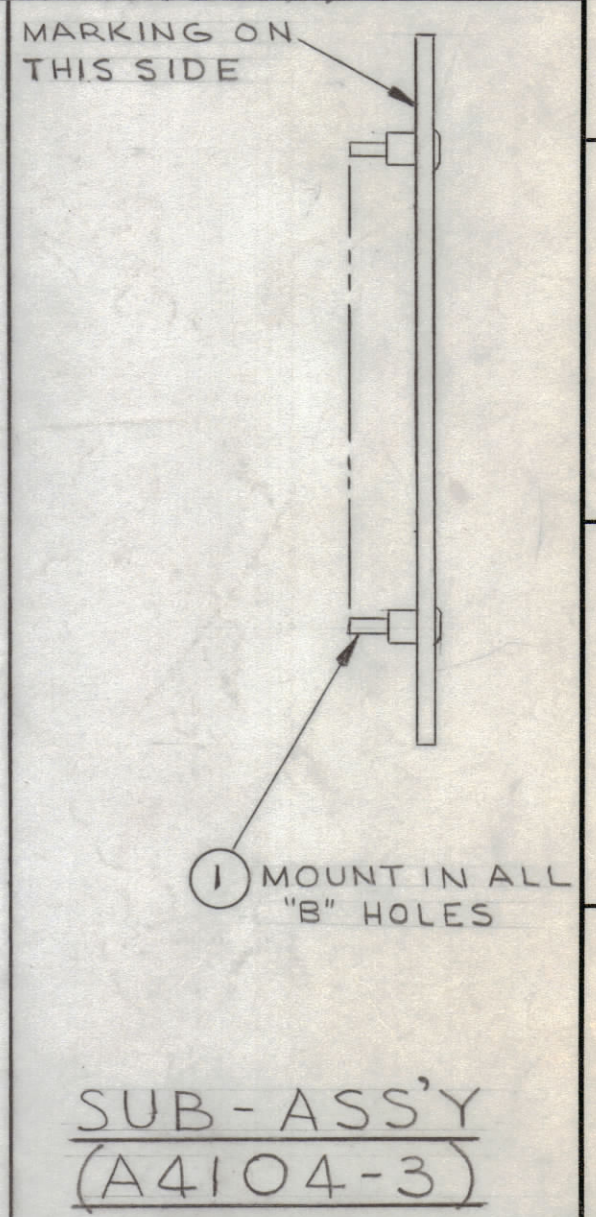
MATERIAL: 3/32 THK EPOXY, G-11 NATURAL 3/32 (.0937) DR 2-HOLES

MACHINING (A4104-1) DETAIL-C

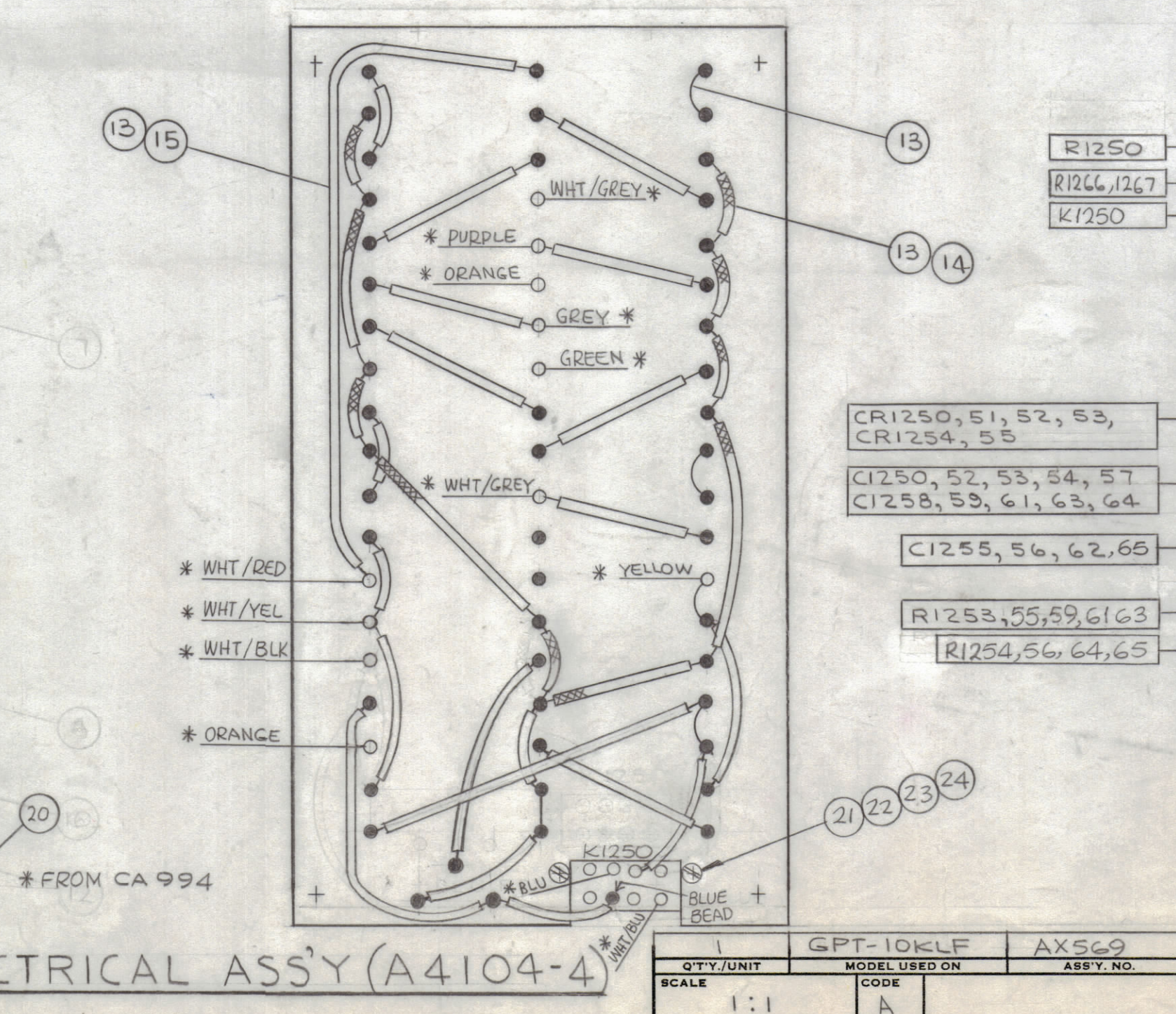
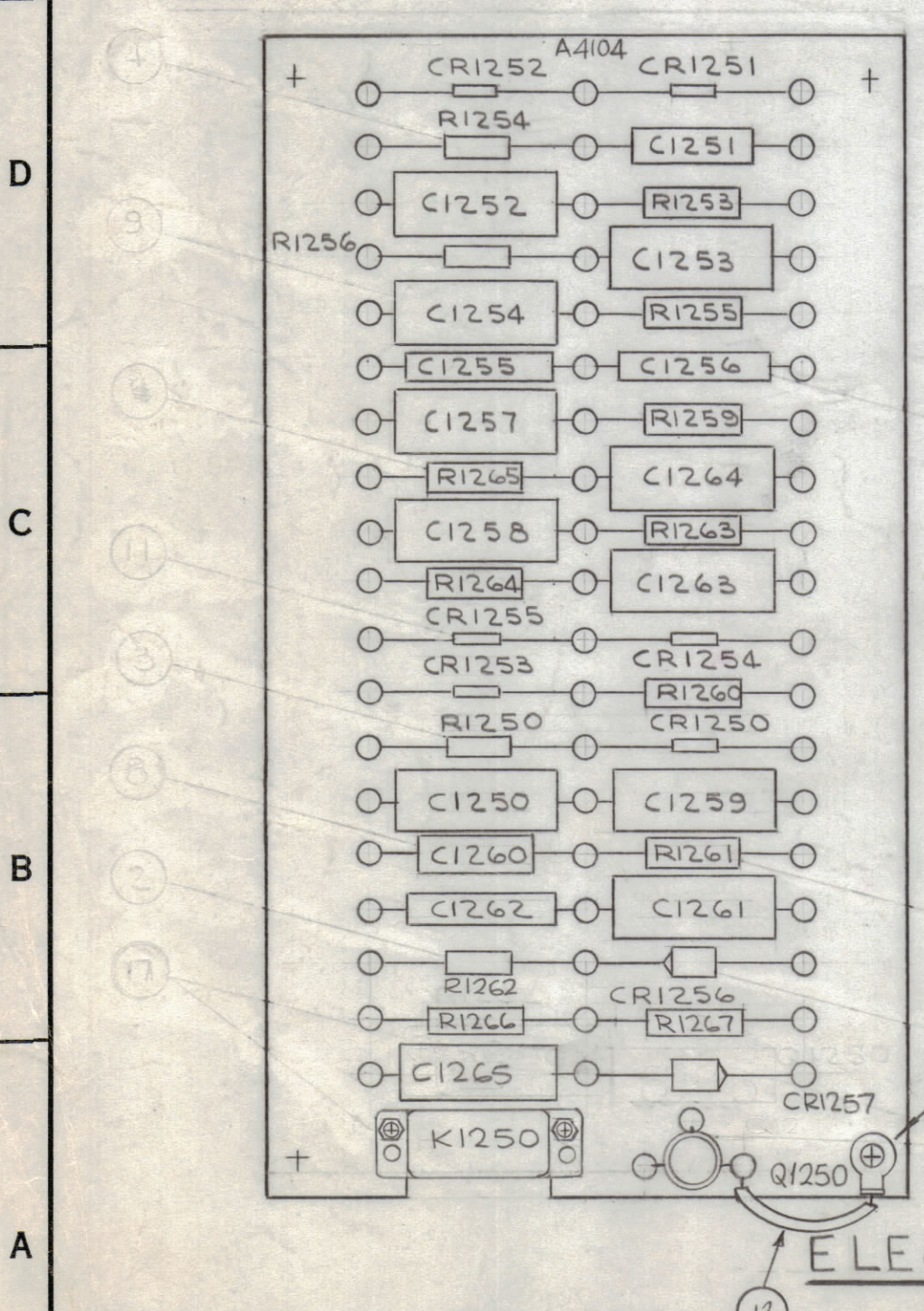


- UNLESS OTHERWISE SPECIFIED -  
1- MARKING PROCESS AS PER TMC SPEC S727.  
2- ALL LETTERING 3/32 HIGH WHITE GOTHIC.  
3- MARK TMC PT. NO. WITH LATEST REV. LETTER.

MARKING (A4104-2)



SUB-ASS'Y (A4104-3)



LIST OF MATERIAL table with columns: REQ'D, ITEM, PART NUMBER, DESCRIPTION, SYMBOL. Lists various components like NUT, PLAIN, HEX; WASHER, LOCK, SPLIT; SCREW, MACHINE; RESISTOR, FIXED, COMP.; RELAY, MINIATURE; SOLDER, SOFT; INSULATION, SLEEVING; WIRE, BUSS; TRANSISTOR; DIODE; CAPACITOR, FIXED, MYLAR; CAPACITOR, FIXED, EPOXY; CAPACITOR, ELECTROLYTIC; DIODE; RESISTOR, FIXED, COMP.; RESISTOR, FIXED, COMP.; SPLIT TERMINAL LUG.

THE TECHNICAL MATERIEL CORP. MAMARONECK, NEW YORK  
TERMINAL BOARD ASSEMBLY  
DRAWN: J. LESHINSKI, DATE: 2/17/65  
CHECKED: [Signature], DATE: 3/23/66  
DATE: 3/24/66  
SHEET: A4104, REV. LTR: A