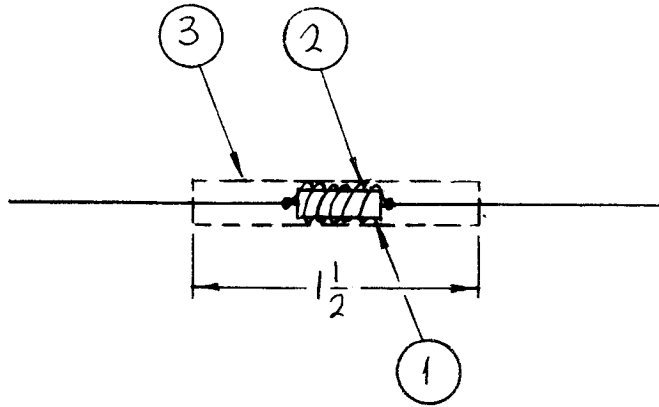


REQ. PER UNIT	USED ON			A4103	A
	MODEL	ASS'Y. NO.	DATE		
4	VLLA-1		11-12-65		



PROCEDURE:

1~ WIND 5 TURNS OF ITEM 2 AROUND ITEM 1 & SECURE WITH ITEM 4 .

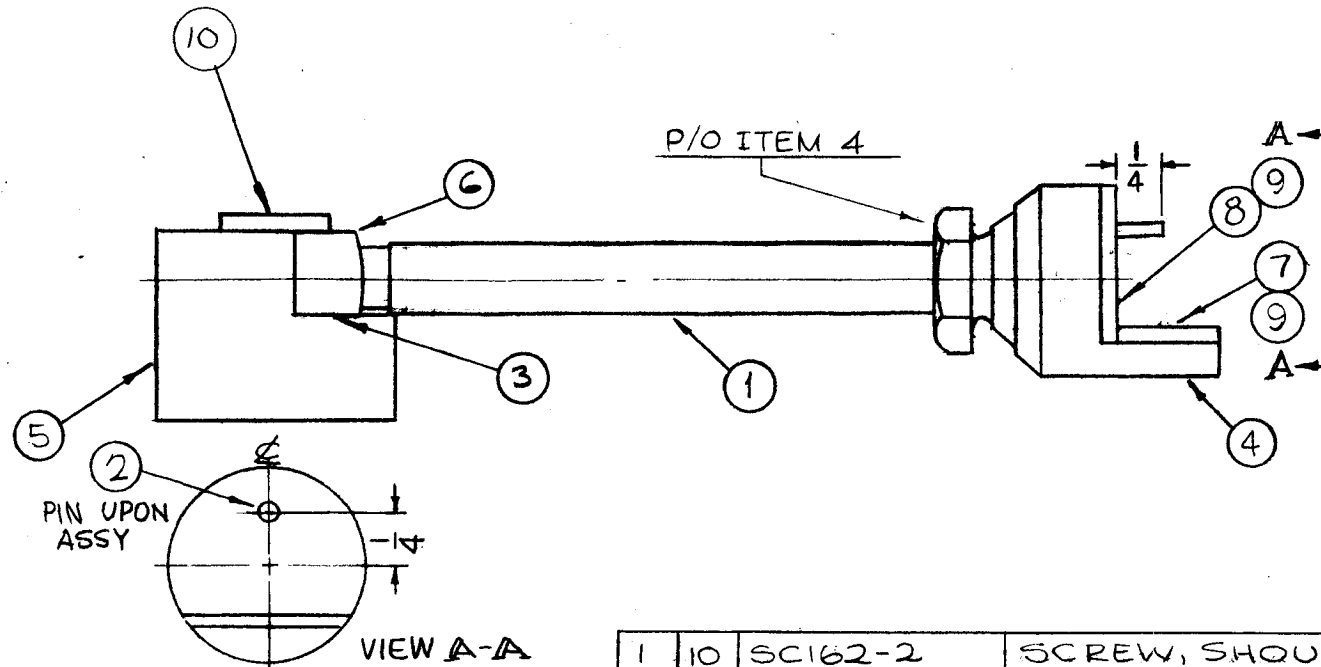
2~ COVER WITH ITEM 3 & SHRINK.

X	4	BS100	SOLDER, TIN ALLOY		
3	3	PX 830-6-1	INS, SLVG, ELECT, SHRINK TYPE		
2	2	WL100-7	WIRE, ELEC, BUSS		
1	1	RC20GF101K	RES, FXD, COMP		
REQ. ITEM	PART NO.		F. BUDETTI DESCRIPTION		SYMBOL
STOCK SIZE			THE TECHNICAL MATERIEL CORP. MAMARONECK. NEW YORK		
MATERIAL			SUPPRESSOR, PARASITIC		
TYPE & TEMPER			DRAWN	CHECKED	FINAL APPROVAL
HEAT TREAT. SPEC.			<i>[Signature]</i>	<i>[Signature]</i>	<i>[Signature]</i> 11/16/65
FINISH & SPEC. NO.			ELEC. DES. APP.	MECH. DES. APP.	A4103 A

A	IT. 2 WAS WI100-7	11/5/66	15465	D.V.V.	<i>[Signature]</i>	<i>[Signature]</i>
<i>[Symbol]</i>	ORIGINAL RELEASE FOR	11-16-65	<i>[Symbol]</i>	D.V.V.		
SYM	DESCRIPTION	DATE	CH. NO.	DRAFTS	CHECKER	ENG. APP.
UNLESS OTHERWISE SPECIFIED DIMENSIONS ARE IN INCHES AND INCLUDE CHEMICALLY APPLIED OR PLATED FINISHES		SCALE 1:1				
DECIMALS .X ± .05 .XX ± .01 .XXX ± .005	TOLERANCES	FRACTIONS ± 1/64 ANGLES ± 0° 30'	CODE A			

REQ. PER UNIT	USED ON		
	MODEL	ASS'Y. NO.	DATE
1	TST(1)OK	AM124	2-24-65
1	GPT1OKLF		2-7-66

A4113 A

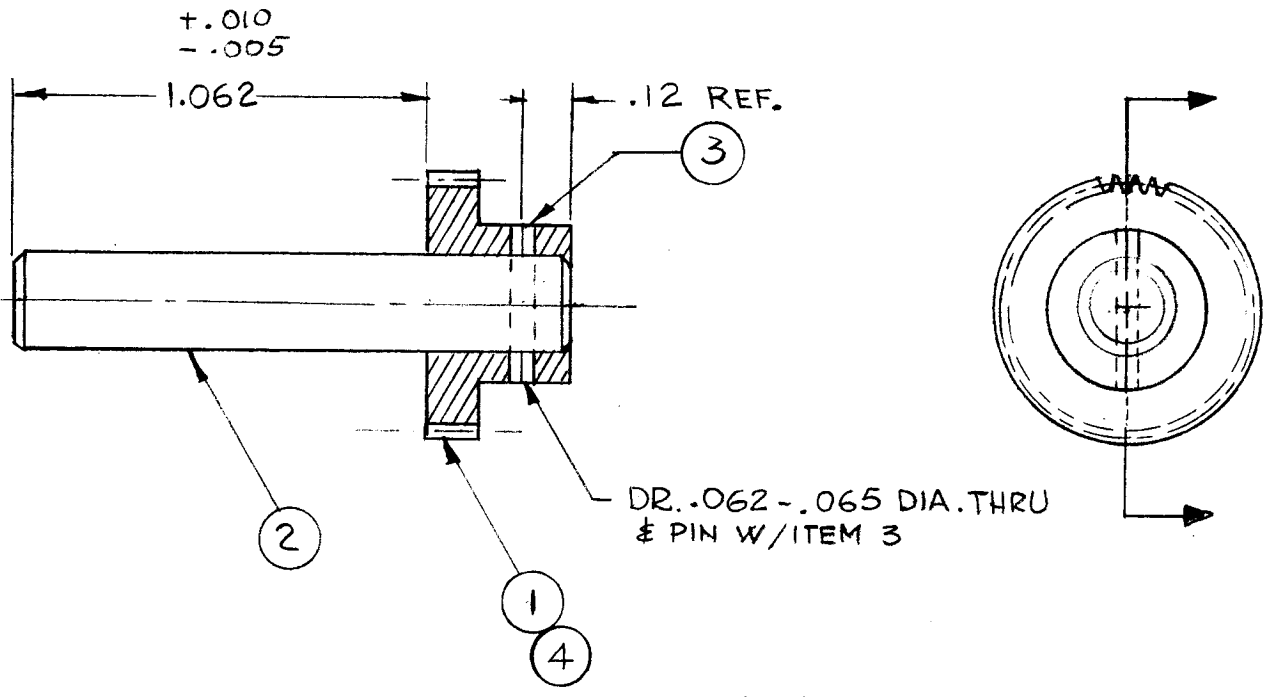


1	10	SC162-2	SCREW, SHOULDER
X	9	GL102	ADHESIVE Q MAX
1	8	RY159	PAD, CUSHION
1	7	RY158	PAD, CUSHION
1	6	PM1172	EYE BOLT, SWIVEL
1	5	PM1171	HOLDER LATCH
1	4	PM1170	STOP
1	3	WA136-4	SPRING, WASHER WAVY 7/80.D. 3/8I.D.
1	2	PN114-4	PIN, GROOVED, HDLS, TAPER
X	1	PX370-37-0-2.750	INSULATION SLEEVING

A	"P/O ITEM 6" DELETED IT 4 & 5 REVERSED ITEM 10 ADDED	5-4-66	16202	WJW	JCB	QJB
Ø	ORIGINAL RELEASE FOR PRODUCTION	3-3-66		Jc	JCB	arc
X1	DWG WAS ② SIZE. ITEMS 4, 5 & 6 MADE SEPERATE DWG'S. IT 2 WAS NT150 (WAS ALSO MADE P/O IT. 4 IT 9 WAS SC162-2 (MADE P/O IT. 6)	8/16/65		Jc		
SYM	DESCRIPTION	DATE	CH. NO.	DRAFTS	CHECKER	ENG. APP.
UNLESS OTHERWISE SPECIFIED DIMENSIONS ARE IN INCHES AND INCLUDE CHEMICALLY APPLIED OR PLATED FINISHES		SCALE				
DECIMALS .X ± .05 .XX ± .01 .XXX ± .005	TOLERANCES	FRACTIONS ± 1/64 ANGLES ± 0° 30'	CODE			

REQ. ITEM	PART NO.	BUDETTI	DESCRIPTION	SYMBOL
THE TECHNICAL MATERIEL CORP. MAMARONECK, NEW YORK				
LATCH ASS'Y				
MATERIAL				
TYPE & TEMPER	HEAT TREAT. SPEC.	DRAWN	CHECKED	FINAL APPROVAL
FINISH & SPEC. NO.		ELEC. DES. APP.	MECH. DES. APP.	A4113 A

REQ. PER UNIT	USED ON			A4171	A
	MODEL	ASS'Y. NO.	DATE		
1	CHGR-3	A4168	1-27-65		

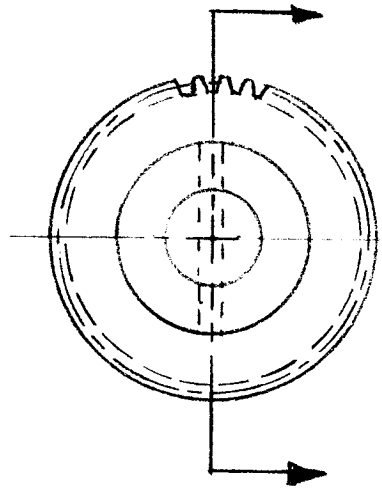
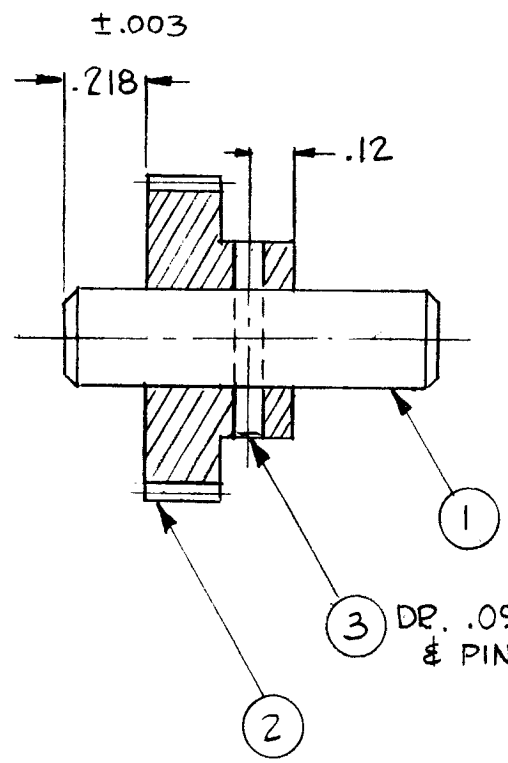


REQ.	ITEM	PART NO.	DESCRIPTION	SYMBOL
1	4	SLHC 0632SS3	SET SCREW	
1	3	PN59-062-8	PIN, SPRING	
1	2	PM1051-RF1.437	SHAFT STR. 1/4 D	
1	1	GR 205-3	GEAR, SPUR	

REQ. ITEM		PART NO.		J. ANGER	DESCRIPTION	SYMBOL
STOCK SIZE				THE TECHNICAL MATERIEL CORP. MAMARONECK. NEW YORK		
MATERIAL				GEAR ASSY		
TYPE & TEMPER		HEAT TREAT. SPEC.		1-28-65 G.D.L.	JCB	4/8/65
FINISH & SPEC. NO.		ELEC. DES. APP.		MECH. DES. APP.		A4171 A

A	CHC'D IT13 FR PN59-062-6 TO -8. ADD IT 4 & CALLOUT. ADD "REF".	9-19-66	1682	R M	JCB	
Ø	ORIGINAL RELEASE FOR PRODUCTION	4/8/65	M	NLA		
X1	MODEL WAS CHG -3; ADDED A4168; REVISED 1&2 CALLOUTS	4/8/65		JL	JM	
SYM	DESCRIPTION	DATE	CH. NO.	DRAFTS	CHECKER	ENG. APP.
UNLESS OTHERWISE SPECIFIED DIMENSIONS ARE IN INCHES AND INCLUDE CHEMICALLY APPLIED OR PLATED FINISHES		SCALE 2:1				
DECIMALS .X ± .05 .XX ± .01 .XXX ± .005	TOLERANCES	FRACTIONS ± 1/64 ANGLES, ± 0° 30'	CODE A			

REQ. PER UNIT	USED ON			A 4173	Ø
	MODEL	ASS'Y. NO.	DATE		
1	CHGR-3	A4168	1-27-65		

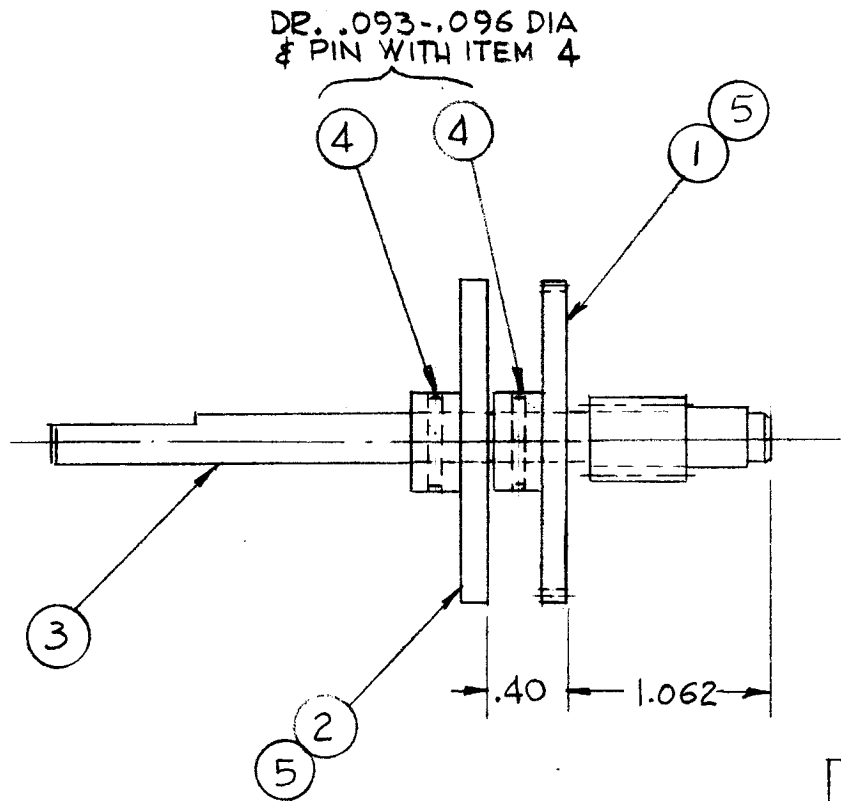


3 DR. .093-.096 DIA. THROUGH & PIN W/ITEM 3

1	3	PN 114-4	PIN, GROOVED, HDLS		
1	2	GR 205-16	GEAR, SPUR, HUB		
1	1	PM1051RF.968	SHAFT STR 1/4 D		
REQ. ITEM		PART NO.	J. ANGER	DESCRIPTION	SYMBOL
#			THE TECHNICAL MATERIEL CORP.		
STOCK SIZE			MAMARONECK. NEW YORK		
#			GEAR, ASSY		
MATERIAL					
* #		G.D.L	ROB	MAM 4/8/65	
TYPE & TEMPER	HEAT TREAT. SPEC.	DRAWN	CHECKED	FINAL APPROVAL	
#		4/8/65	Junger	A 4173 Ø	
FINISH & SPEC. NO.		ELEC. DES. APP.	MECH. DES. APP.		

Ø	ORIGINAL RELEASE FOR PRODUCTION	4/8/65	M	NLA		
X ₁	MODEL WAS CHG-3; ADDED A4168 ASSY NO.	4/8/65		JL	M	
SYM	DESCRIPTION	DATE	CH. NO.	DRAFTS	CHECKER	ENG. APP.
UNLESS OTHERWISE SPECIFIED DIMENSIONS ARE IN INCHES AND INCLUDE CHEMICALLY APPLIED OR PLATED FINISHES		SCALE 2:1				
DECIMALS .X ± .05 .XX ± .01 .XXX ± .005	TOLERANCES	FRACTIONS ± 1/64 ANGLES ± 0° 30'	CODE A			

REQ. PER UNIT	USED ON			A 4174	A
	MODEL	ASS'Y. NO.	DATE		
1	CHGR-3	A4168	1-28-65		



2	5	SLHC0632553	SET SCREW
2	4	PN 114-4	PIN, GROOVED, HDLS
1	3	GR 219	PINION SHAFT
1	2	PM 1029	DETENT
1	1	GR 205-2	GEAR, SPUR

A	ADD ITS & CALLOUT	9-19-66	16872	RME	JCS	NK
Ø	ORIGINAL RELEASE FOR PRODUCTION	4/8/65	AA	HLA		
X	MODEL WAS CHG-3; ADDED A4168; ADDED 219 TO IT; 3	4/8/65		JL		
SYM	DESCRIPTION	DATE	CH. NO.	DRAFTS	CHECKER	ENG. APP.
UNLESS OTHERWISE SPECIFIED DIMENSIONS ARE IN INCHES AND INCLUDE CHEMICALLY APPLIED OR PLATED FINISHES		SCALE 1:1				
DECIMALS .X ± .05 .XX ± .01 .XXX ± .005	TOLERANCES	FRACTIONS ± 1/64 ANGLES ± 0° 30'	CODE A			

REQ. ITEM	PART NO.	G. ANGER	DESCRIPTION	SYMBOL
STOCK SIZE		THE TECHNICAL MATERIEL CORP. MAMARONECK, NEW YORK		
MATERIAL		GEAR & DETENT ASSY		
TYPE & TEMPER	HEAT TREAT. SPEC.	G.D.L.	JCS	1/11/65 4/8/65
FINISH & SPEC. NO.		DRAWN	CHECKED	FINAL APPR VAL
		Janger		A 4174
		ELEC. DES. APP.	MECH. DES. APP.	A

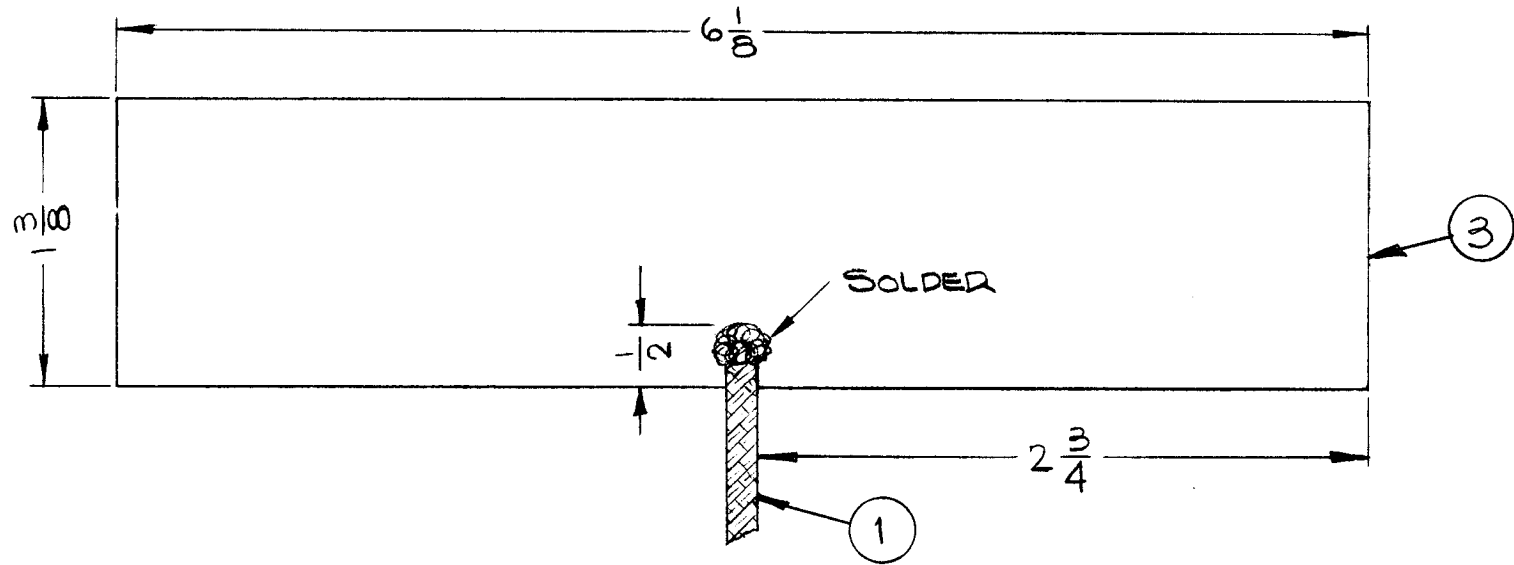
SYMBOL(S)	ITEM NO.	USED TO MOUNT	QTY	REQ. PER UNIT	USED ON			A4191	C
					MODEL	ASS'Y. NO.	DATE		
				1	BSP-1D		5/18/65		

AR101	1								
	5	HA102	4						
F101	6								
F101	7								
XF101	8								
LS101	11								
	12	AZ102 to MS4169	4	4	24	SFB0256SN3	SCR,TAP.,THD CTG		
	13	HA102	4	4	23	SCHH1032BN8	BOLT,MACH		
	18	AZ102 to MS4169	4	4	22	SCBP0632BN8	SCR,MACH		
R101,S101	19			4	21	SCBP0632BN5	SCR,MACH		
					20	DELETED			
	21	AZ102 to MS4169	4	1	19	RV4NBYS03A	RES,VAR-COMP		
	22	LS102/MS395/AZ102	4	4	18	NTH0632BN8	NUT,PLN,HEX		
	23	HA102	4	1	17	NP103-76	PLATE,IDENT		
	24	NP103	4	2	16	MS4169	PLATE,ADPT,AMPL		
				1	15	MS395	GRILLE,SPEAKER		
				1	14	MP123-3FB	KNOB		
				4	13	LWS10MRN	WASH.,LK,SPLIT		
				4	12	LWE06MRN	WASH.,LK,EXT		
				1	11	LS102	LDSPKR,PM		
				1	10	LD1172/MS3064	PNL,FRONT		
				2	9	HA102-2BN	HDL,BOW		
				1	8	FH104-2	FUSEHOLDER,IND		
				1	7	FU102-.1	FUSE,CTG,.1 115V		
				1	6	FU102-.062	FUSE,CTG,.062A-230V		
				4	5	CU139-2B	FRL,HDL		
					4	DELETED			
					3	DELETED			
					2	BS100	SOLDER,TIN ALY		
				1	1	AZ102	AMPL,AF		

OPTIONAL: {

C	IT 7 WAS FUI02-.062 IT. 6 WAS FUI02-.032	3-16-66	15964	NRB	QCP	MM	REQ.	ITEM	PART NO.	POSE	DESCRIPTION	SYMBOL		
B	IT. 6 WAS FUI02-.062 IT. 7 WAS FUI02-.1	1/2/66	15641	JL	QCP	MM	THE TECHNICAL MATERIEL CORP. MAMARONECK, NEW YORK							
A	IT 7 WAS .100	8-23-65	19543	MY	QCP	MM							STOCK SIZE	
Ø	ORIGINAL RELEASE FOR PRODUCTION	5-18-65		CJL			BSP-1D FINAL ASSEMBLY							
BYM	DESCRIPTION	DATE	CH. NO.	DRAFTS	CHECKER	ENG. APP.	MATERIAL							
UNLESS OTHERWISE SPECIFIED DIMENSIONS ARE IN INCHES AND INCLUDE CHEMICALLY APPLIED OR PLATED FINISHES							SCALE							
DECIMALS .X ± .05 .XX ± .01 .XXX ± .005							FRACTIONS ± 1/64 ANGLES ± 0° 30'							
TOLERANCES							CODE							
							TYPE & TEMPER		HEAT TREAT. SPEC.		ENG COORD		DRAWN	
											5-18-65 E. Gabriel		5/18/65	
											CHECKED		FINAL APPROVAL	
							FINISH & SPEC. NO.		ELEC. DES. APP.		MECH. DES. APP.		A4191 C	

REQ. PER UNIT	USED ON			A4192	A
	MODEL	ASS'Y. NO.	DATE		
1	TR185	A4192	3-30-65		



1	3	MS1205-6.125	PERFORATED METAL STRIP	
X	2	BS100	SOLDER, SOFT	
4"	1	WL-103-2	BRAID, WIRE, FLAT	
REQ. ITEM	PART NO.		DESCRIPTION	SYMBOL
STOCK SIZE			THE TECHNICAL MATERIEL CORP. MAMARONECK, NEW YORK	
MATERIAL			SHIELD ASSY. TR185	
TYPE & TEMPER		HEAT TREAT. SPEC.	DRAWN	CHECKED
NATURAL			H. AUSTIN	4/19/65
FINISH & SPEC. NO.		ELEC. DES. APP.	MECH. DES. APP.	
				A4192
				A

A	G 1/8 WAS G 1/2; 1 3/8 WAS 1 1/2 ADD. IT. 3; DIM. 1/2, 2 3/4	3/8/66	15873	HCA	JB	MA
Ø	ORIGINAL RELEASE FOR PRODUCTION	4/19/65	Ø			
SYM	DESCRIPTION	DATE	CH. NO.	DRAFTS	CHECKER	ENG. APP.
UNLESS OTHERWISE SPECIFIED DIMENSIONS ARE IN INCHES AND INCLUDE CHEMICALLY APPLIED OR PLATED FINISHES		SCALE 1:1				
DECIMALS .X ± .05 .XX ± .01 .XXX ± .005	TOLERANCES	FRACTIONS ± 1/64 ANGLES ± 0° 30'	CODE			