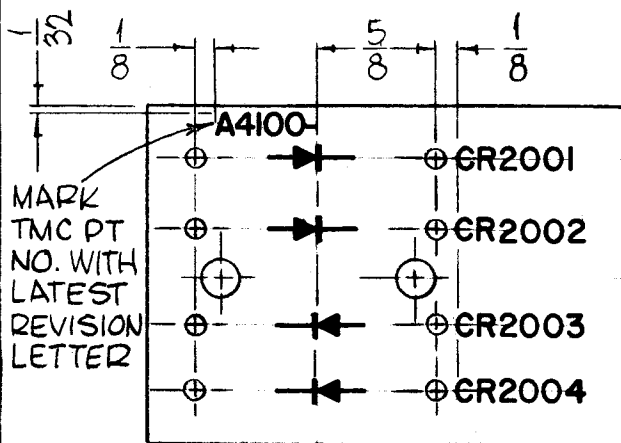


HOLES REQ.
 A-.115 DIA 8
 B-.189 DIA⁺⁰⁰³₋₀₀₀ 2
 MAT'L- 1/8 THICK
 XXXD PHENOLIC

STAGE 1 - MACHINING
 A4100-1

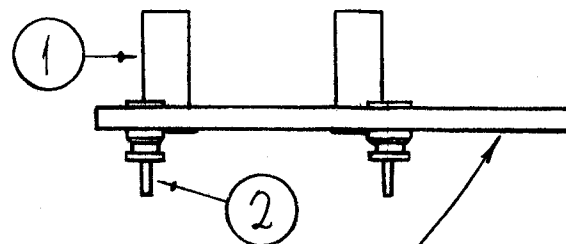
ALL LETTERING 1/8 HIGH BLACK GOTHIC.



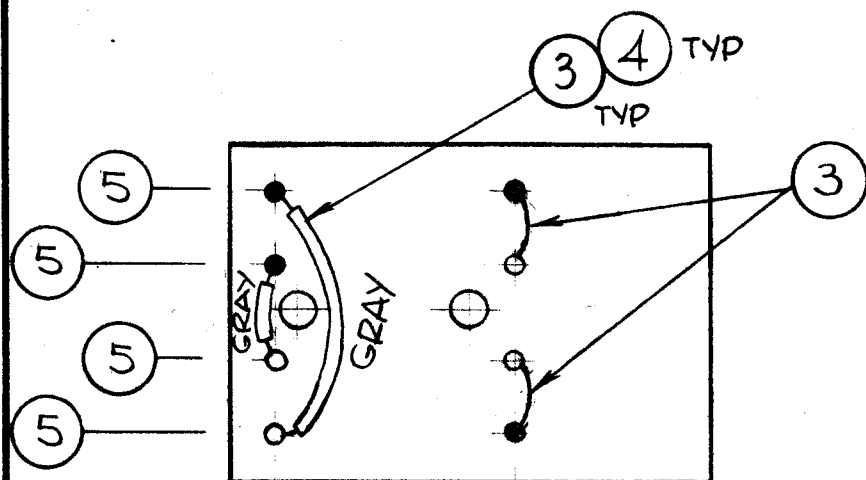
MARKING METHOD AS PER TMC SPEC 5727.
 STAGE 2 - MARKING
 A4100-2
 FINISH: S113 FUNGUS RESISTANT VARNISH (AFTER LETTERING)

A4100

REVISIONS						
SYM	DESCRIPTION	DATE	E.M.N. NO.	DRAFT	CHKD	APPD
X	EXP. RELEASE	2/10/65		JL		
Ø	ORIGINAL RELEASE	11-29-65	Ø		JL	



STAGE 3 SUB-ASS'Y
 A4100-3



REAR (UNMARKED) SIDE SHOWN.
 MOUNT COMPONENTS ON MARKED (LETTERED) SIDE.

● DENOTES SOLDER POINT

STAGE 4 - FINAL ASS'Y
 A4100-4

REQ'D.	ITEM	PART NUMBER	DESCRIPTION	SYMBOL
X	6	BS 100	SOLDER, SOFT	
4	5	DD112	DIODE	CR2001, CR2002, CR2003, CR2004
X	4	PX104-7-022	SLEEVING, INSULATION	GRAY
X	3	WL100-7	WIDE, BUSS BAR, TINNED	
Ø	2	TE109-3	SPLIT TERMINAL LUG	
2	1	TE108-22	STANDOFF, RIVET TYPE	

BUDETTI		LIST OF MATERIAL			
MATERIAL		THE TECHNICAL MATERIEL CORP. MAMARONECK, NEW YORK			
FINISH		TITLE DIODE BOARD ASS'Y			
UNLESS OTHERWISE SPECIFIED DIMENSIONS ARE IN INCHES AND INCLUDE CHEMICALLY APPLIED OR PLATED FINISHES		DRAWN John C Biele CHECKED JCB ELECT. DES. MECH. DES. DATE DATE	DATE 7-11-65 DATE 6-21-65 DATE	FINAL APPROV. DATE 11/29/65 SHEET REV. LTR.	DATE DATE
DECIMALS .X ± .05 .XX ± .01 .XXX ± .005	TOLERANCES	FRACTIONS ± 1/64 ANGLES ± 0° 30'	A4100		

NOTES

THE CONTENTS OF THIS DRAWING ARE THE EXCLUSIVE PROPERTY OF THE TECHNICAL MATERIEL CORP. ITS UNAUTHORIZED USE OR REPRODUCTION IN WHOLE OR IN PART IS STRICTLY FORBIDDEN.