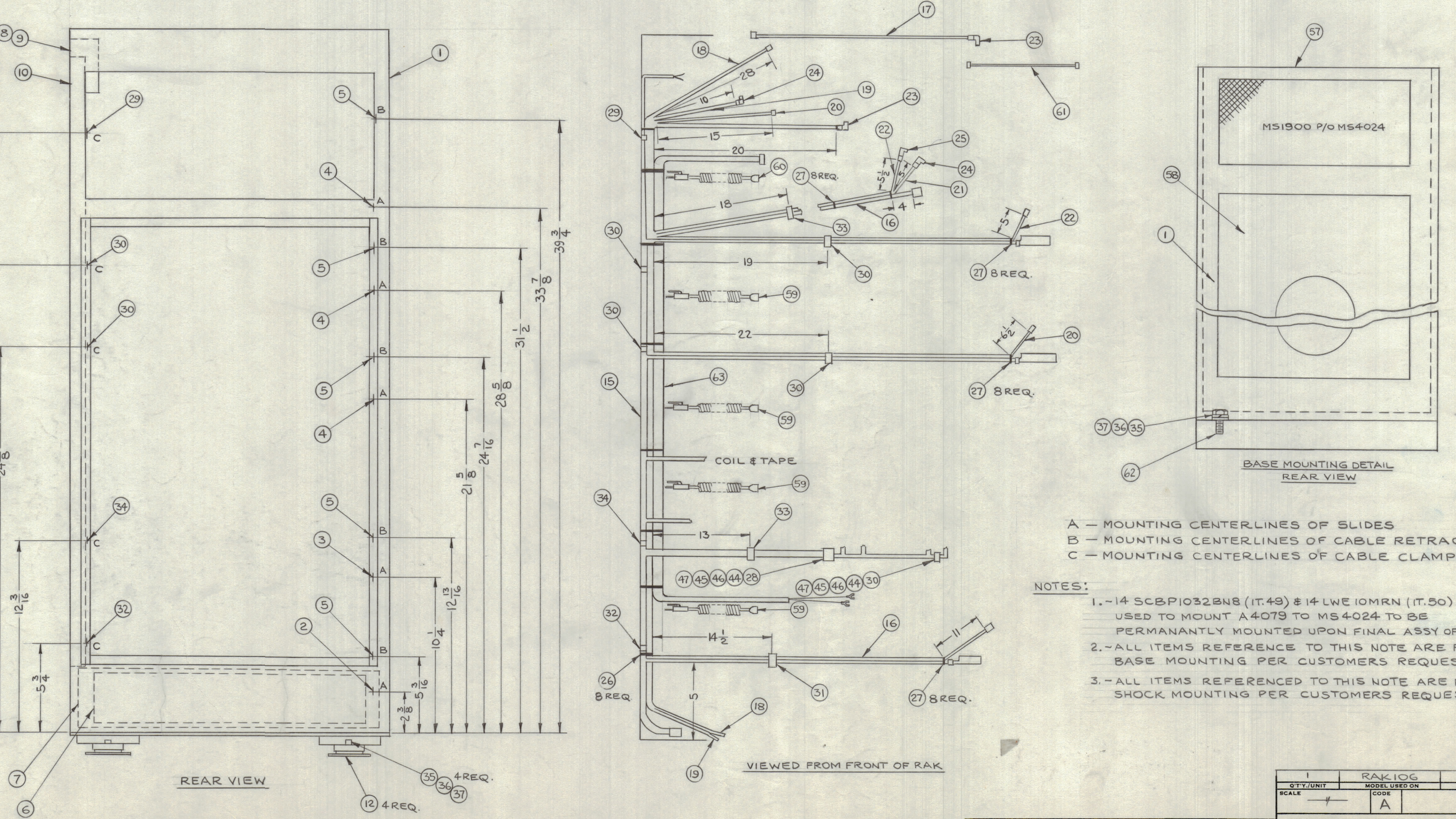
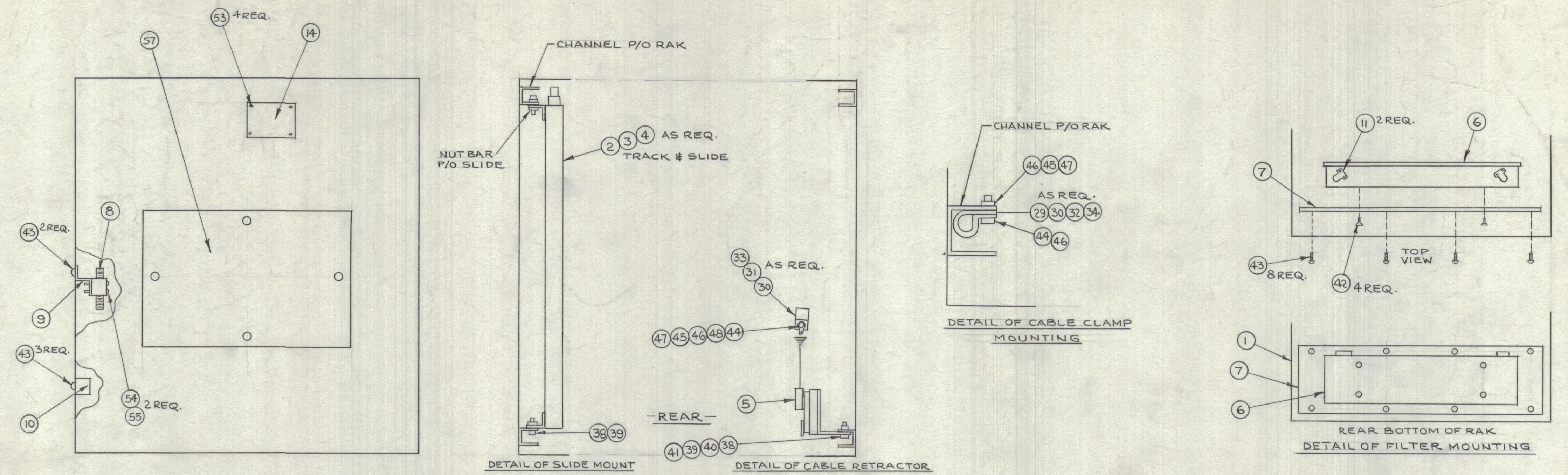


		REVISIONS					
ZONE	SYM	DESCRIPTION	DATE	E.M.N. NO.	DRAFT	CHKD	APPD
	X	EXPERIMENTAL RELEASE	1.12.65	X	ATB		
	Ø	ORIGINAL RELEASE FOR PRODUCTION	7-19-65				



NOTE 2

QTY	UNIT	PART NUMBER	DESCRIPTION
1	63	CA1067	CABLE ASSY, SP.
1	62	MS1901	BASE, CAB., ELEC. EQUIPMENT.
1	61	PXR71-8	WRG DIAG, LAM.
1	60	CA435-4	CBL ASSY, PWR
4	59	CA555-3	CBL ASSY, PWR
1	58	A4079	FAN/PNL ASSY
1	57	MS4037	COVER, TOP, BLANK
X	56	BS100	SOLDER
2	55	LWE04MRN	WASH., LK, EXT.
2	54	SCBP0440BN20	SCR, MACH.
4	53	SFBP0256SN3	SCR, TAP., THD CTG
	52	DELETED	
4	51	FW10HBN	WASH, FLAT
14	50	LWE10MRN	WASH., LK, EXT.
14	49	SCBP1032BN8	SCR, MACH
5	48	TE104-2	TERM, LUG-LKG
12	47	NTH0632BN8	NUT, PLN, HEX
17	46	FW06HBN	WASH, FLAT
12	45	LWE06MRN	WASH, LK, EXT.
12	44	SCBP0632BN8	SCR, MACH
13	43	SCBP0632BN6	SCR, MACH
4	42	SCBP0832BN6	SCR, MACH
10	41	NTH0832BN10	NUT, PLN, HEX
10	40	FW08HBN	WASH, FLAT
88	39	LWE08MRN	WASH, LK, EXT.
88	38	SCHH0832SN8	SCR, MACH.
4	37	LWS37MRN	LOCKWASHER, SPLIT
4	36	FW37HBN	WASHER, FLAT
4	35	SCHH3716SN16	BOLT, HEX HEAD
1	34	CU102-12	CLAMP, LOOP-3/4D
2	33	CU102-10	CLAMP, LOOP-5/8D
1	32	CU102-8	CLAMP, LOOP-9/16D
1	31	CU102-7	CLAMP, LOOP-1/2D
5	30	CU102-4	CLAMP, LOOP-5/16D
1	29	CU102-2	CLAMP, LOOP-3/16D
1	28	CU131-6	CLAMP, LOOP, CUSH.
32	27	CU142-6	STRAP, CBL, ADJ.
5	26	CU142-1	STRAP, CBL, ADJ.
1	25	UG306B/U	ADPT, CONN-BNC
2	24	UG646/U	ADPT, CONN-IMP
2	23	UG212C/U	ADPT, CONN-IN, ANG
1	22	CA480-5-84	CBL ASSY, RF
1	21	CA480-120-68	CBL ASSY, RF
1	20	CA480-109-76	CBL ASSY, RF
1	19	CA480-120-12F	CBL ASSY, RF
1	18	CA978-144	CBL ASSY, SPECIAL PURPOSE
1	17	CA480-120-20	CBL ASSY, SP
1	16	CA10136-110	CBL ASSY, SP, PWR
1	15	CA960	WRG HARN, BRANCHED
1	14	NP103-42	PLATE, IDENT-COML
13		DELETED	
4	12	SH104-4-T6	MOUNTS, SHOCK
2	11	CU110	BOX CONN, ELEC.
1	10	AX528	STRIP ASSEMBLY, PWR
1	9	MS4157	BRKT, MTG, RELAY
1	8	RL139-2-110AC	REL, ARM.-RF
1	7	MS4132	PLATE, MTG, FIL
1	6	FI102	FIL, RADIO INTFR
5	5	A3517	RETR ASSEMBLY
3	4	TK115-18	TRACK SET, TILT/LK
1	3	TK105-18	TRACK SET, TILT
1	2	TK114-18	TRACK SET, FXD.
1	1	MS4024	CAB., ELEC. EQUIP.

NOTE 1

NOTE 2 & 3

NOTE 3

I JOHNSON

LIST OF MATERIAL

REQ'D	ITEM	PART NUMBER	DESCRIPTION	SYMBOL
1	63	CA1067	CABLE ASSY, SP.	
1	62	MS1901	BASE, CAB., ELEC. EQUIPMENT.	
1	61	PXR71-8	WRG DIAG, LAM.	
1	60	CA435-4	CBL ASSY, PWR	
4	59	CA555-3	CBL ASSY, PWR	
1	58	A4079	FAN/PNL ASSY	
1	57	MS4037	COVER, TOP, BLANK	
X	56	BS100	SOLDER	
2	55	LWE04MRN	WASH., LK, EXT.	
2	54	SCBP0440BN20	SCR, MACH.	
4	53	SFBP0256SN3	SCR, TAP., THD CTG	
	52	DELETED		
4	51	FW10HBN	WASH, FLAT	
14	50	LWE10MRN	WASH., LK, EXT.	
14	49	SCBP1032BN8	SCR, MACH	
5	48	TE104-2	TERM, LUG-LKG	
12	47	NTH0632BN8	NUT, PLN, HEX	
17	46	FW06HBN	WASH, FLAT	
12	45	LWE06MRN	WASH, LK, EXT.	
12	44	SCBP0632BN8	SCR, MACH	
13	43	SCBP0632BN6	SCR, MACH	
4	42	SCBP0832BN6	SCR, MACH	
10	41	NTH0832BN10	NUT, PLN, HEX	
10	40	FW08HBN	WASH, FLAT	
88	39	LWE08MRN	WASH, LK, EXT.	
88	38	SCHH0832SN8	SCR, MACH.	
4	37	LWS37MRN	LOCKWASHER, SPLIT	
4	36	FW37HBN	WASHER, FLAT	
4	35	SCHH3716SN16	BOLT, HEX HEAD	
1	34	CU102-12	CLAMP, LOOP-3/4D	
2	33	CU102-10	CLAMP, LOOP-5/8D	
1	32	CU102-8	CLAMP, LOOP-9/16D	
1	31	CU102-7	CLAMP, LOOP-1/2D	
5	30	CU102-4	CLAMP, LOOP-5/16D	
1	29	CU102-2	CLAMP, LOOP-3/16D	
1	28	CU131-6	CLAMP, LOOP, CUSH.	
32	27	CU142-6	STRAP, CBL, ADJ.	
5	26	CU142-1	STRAP, CBL, ADJ.	
1	25	UG306B/U	ADPT, CONN-BNC	
2	24	UG646/U	ADPT, CONN-IMP	
2	23	UG212C/U	ADPT, CONN-IN, ANG	
1	22	CA480-5-84	CBL ASSY, RF	
1	21	CA480-120-68	CBL ASSY, RF	
1	20	CA480-109-76	CBL ASSY, RF	
1	19	CA480-120-12F	CBL ASSY, RF	
1	18	CA978-144	CBL ASSY, SPECIAL PURPOSE	
1	17	CA480-120-20	CBL ASSY, SP	
1	16	CA10136-110	CBL ASSY, SP, PWR	
1	15	CA960	WRG HARN, BRANCHED	
1	14	NP103-42	PLATE, IDENT-COML	
13		DELETED		
4	12	SH104-4-T6	MOUNTS, SHOCK	
2	11	CU110	BOX CONN, ELEC.	
1	10	AX528	STRIP ASSEMBLY, PWR	
1	9	MS4157	BRKT, MTG, RELAY	
1	8	RL139-2-110AC	REL, ARM.-RF	
1	7	MS4132	PLATE, MTG, FIL	
1	6	FI102	FIL, RADIO INTFR	
5	5	A3517	RETR ASSEMBLY	
3	4	TK115-18	TRACK SET, TILT/LK	
1	3	TK105-18	TRACK SET, TILT	
1	2	TK114-18	TRACK SET, FXD.	
1	1	MS4024	CAB., ELEC. EQUIP.	

THE TECHNICAL MATERIEL CORP.
MAMARONECK, NEW YORK

RAK ASSEMBLY 106
ELECTRICAL EQUIPMENT

UNLESS OTHERWISE SPECIFIED
DIMENSIONS ARE IN INCHES AND INCLUDE
CHEMICALLY APPLIED OR PLATED FINISHES

DRAWN: JTB DATE: 11-2-65
CHECKED: JTB DATE: 6-10-65

FINAL APPROVAL: [Signature] DATE: 6/11/65

DECIMALS: XX ± .01
FRACTIONS: ± 1/4
ANGLES: ± 0° 30'

TOLERANCES: ± 0° 30'

DATE: 6/11/65

SHEET: 1

REV. LTR.: