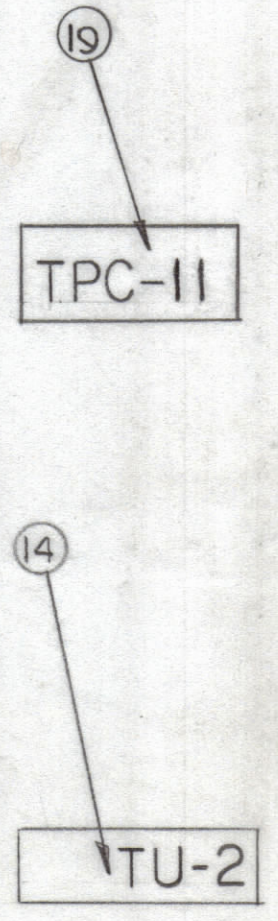
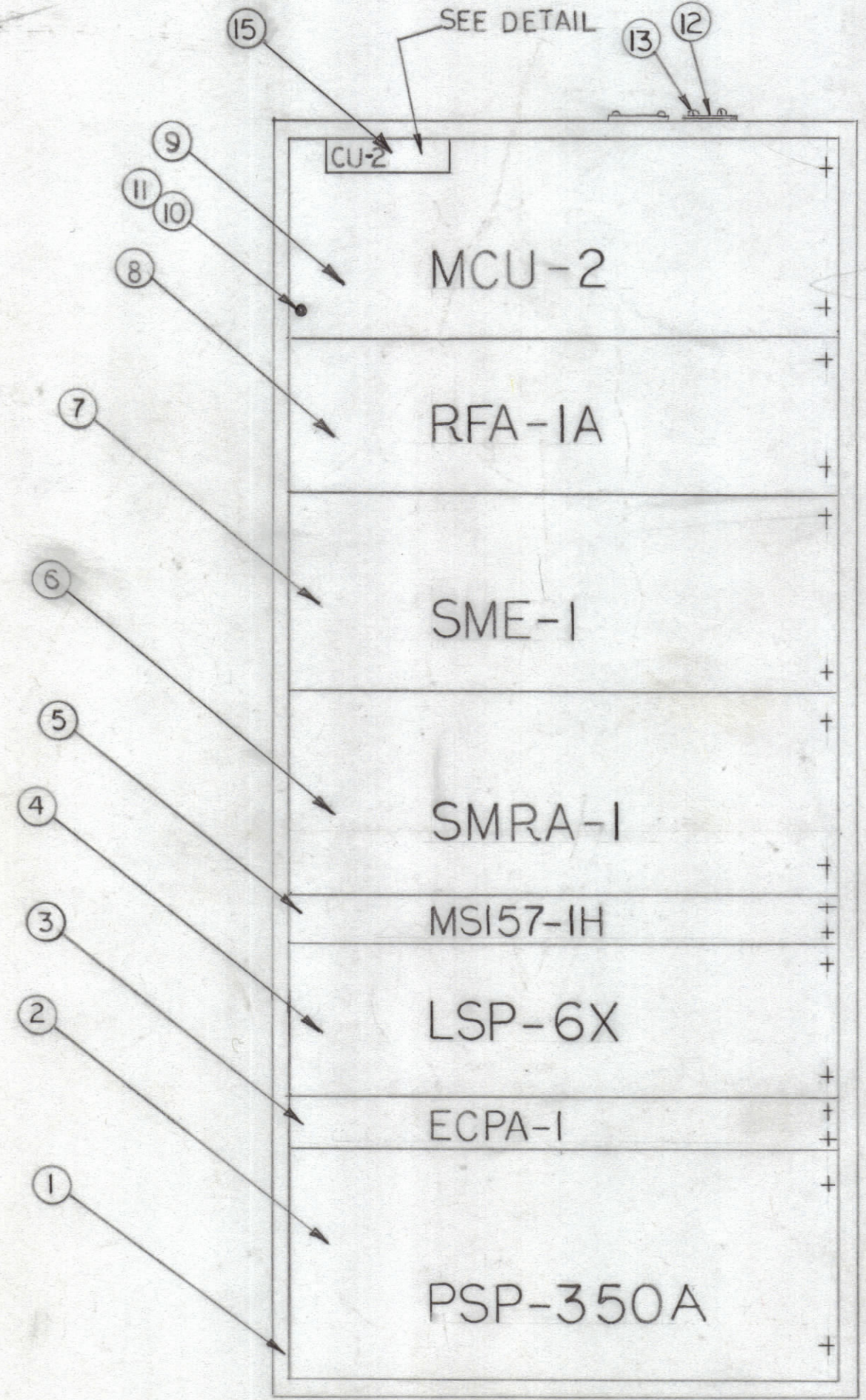
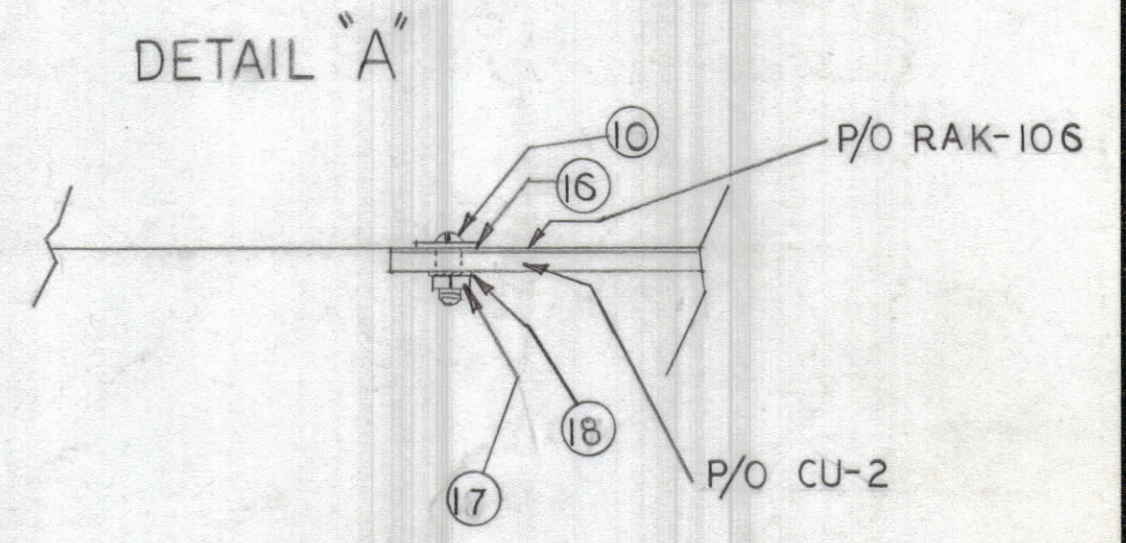
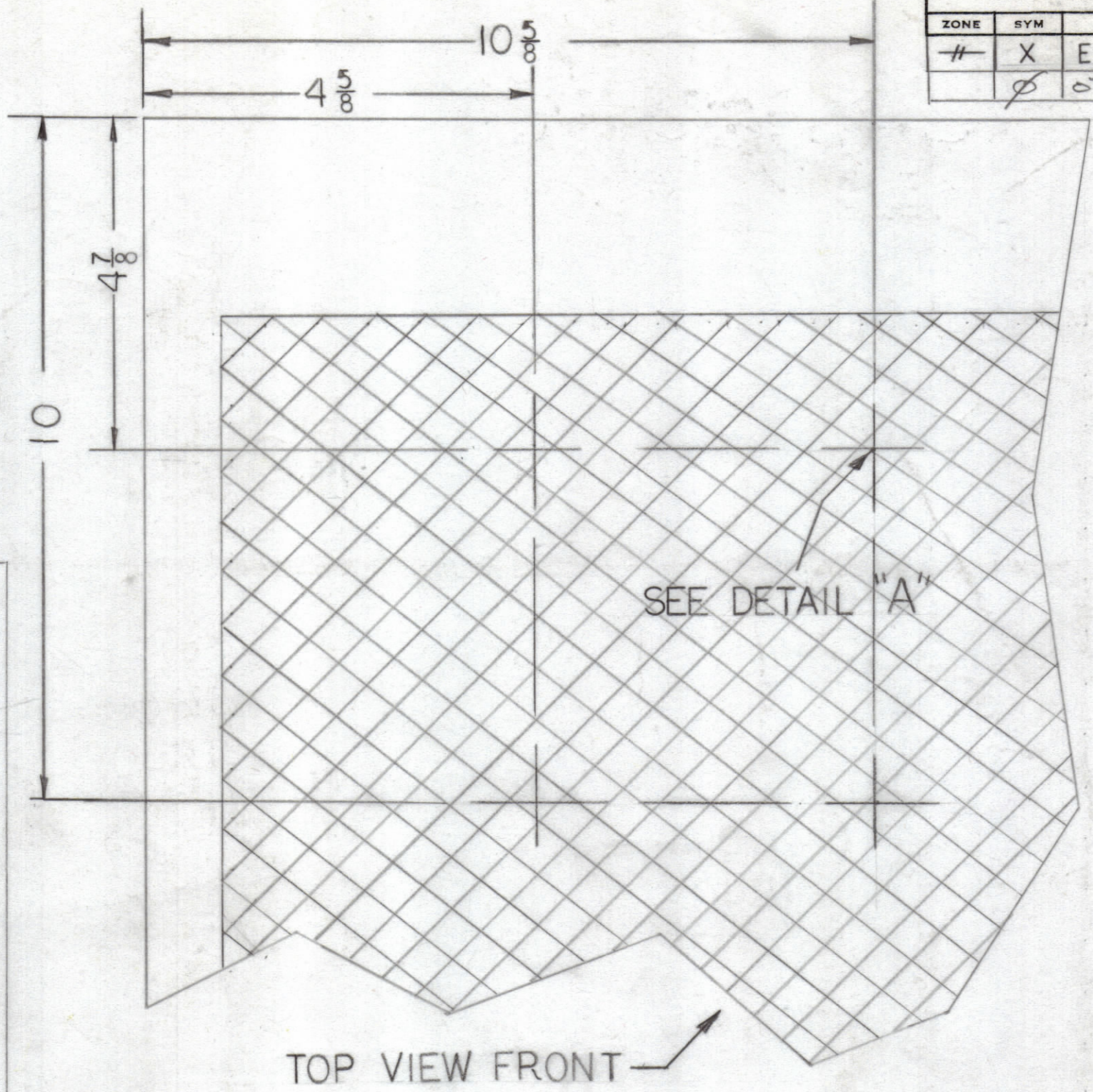


REVISIONS							
ZONE	SYM	DESCRIPTION	DATE	E.M.N. NO.	DRAFT	CHKD	APPD
-#	X	EXPERIMENTAL RELEASE	12-18-64	X			
Ø		ORIGINAL RELEASE FOR PROD.	6/7/65	Ø			

H
G
F
E
D
C
B
A



NOTE:
ITEMS 3,4,5,15
SHALL BE MOUNTED BEFORE
SHIPPING.

NOT TO BE RELEASED
W/O AUTHORIZATION
AUTH. BY _____
DATE: _____

A4069

REQ'D.	ITEM	PART NUMBER	DESCRIPTION	SYMBOL
1	19	TPC-11	TELEPHONE REMOTE CONTROL	
4	18	LWEIOMRN	WASHER, LOCK, EXTERNAL	
4	17	NTH1032BNI2	NUT, PLAIN, HEX	
4	16	FWIOHBN	WASHER, FLAT	
1	15	CU-2	DIRECTIONAL COUPLER UNIT	
1	14	TU-2	ANTENNA TUNER UNIT	
4	13	SFB0256SN3	SCREW TAPPING, THREAD CUTTING PLATE, IDENTIFICATION COML	
1	12	NPI03-85	PLATE, IDENTIFICATION COML	
32	11	WAIOI-11	WASHER, NM	
36	10	SCBPI032BN8	SCREW, MACHINE	
1	9	MCU-2	MONITOR CONTROL UNIT	
1	8	RFA-1A	LINEAR RF AMPLIFIER	
1	7	SME-1	MULTI CHANNEL EXCITER	
1	6	SMRA-1	MULTI CHANNEL RECEIVER	
1	5	MSI57-1H	PANEL, BLANK	
1	4	LSP-6X	SPEAKER PANEL	
1	3	ECPA-1	EQUIPMENT CONNECT PANEL	
1	2	PSP-350A	POWER SUPPLY	
1	1	RAK-106	CABINET, ELECTRICAL EQUIPMENT	

LIST OF MATERIAL				
MATERIAL	THE TECHNICAL MATERIEL CORP. MAMARONECK, NEW YORK			
FINISH	TITLE MCTR-350 FINAL ASSY			
UNLESS OTHERWISE SPECIFIED DIMENSIONS ARE IN INCHES AND INCLUDE CHEMICALLY APPLIED OR PLATED FINISHES	DRAWN T. MEEHAN	DATE 2-17-64	FINAL APPROVAL <i>[Signature]</i>	DATE 6/7/65
DECIMALS .X ± .05 .XX ± .01 .XXX ± .005	TOLERANCES ± 1/64 ANGLES ± 0° 30'	CHECKED L. Gabel	DATE 12/18/64	SHEET A4069
MECH. DES. <i>[Signature]</i>		DATE 6-7-65	REV. LTR.	

1	MCTR-350	ASSY. NO.
QTY./UNIT	MODEL USED ON	
SCALE	CODE	

THE CONTENTS OF THIS DRAWING ARE THE EXCLUSIVE PROPERTY OF THE TECHNICAL MATERIEL CORP. ITS UNAUTHORIZED USE OR REPRODUCTION IN WHOLE OR IN PART IS STRICTLY FORBIDDEN.

NOTES