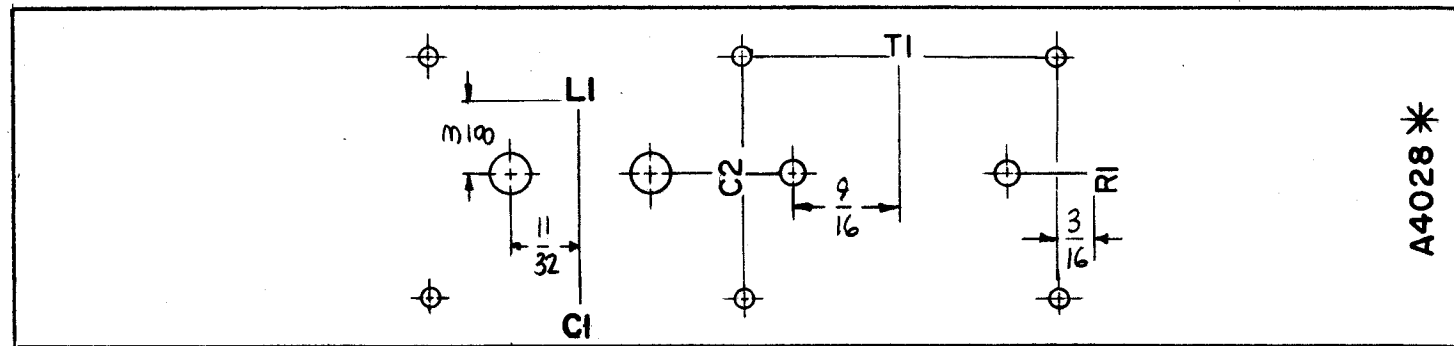


MATERIAL ~ 3/32 THICK EPOXY

MACHINING (A4028-1)

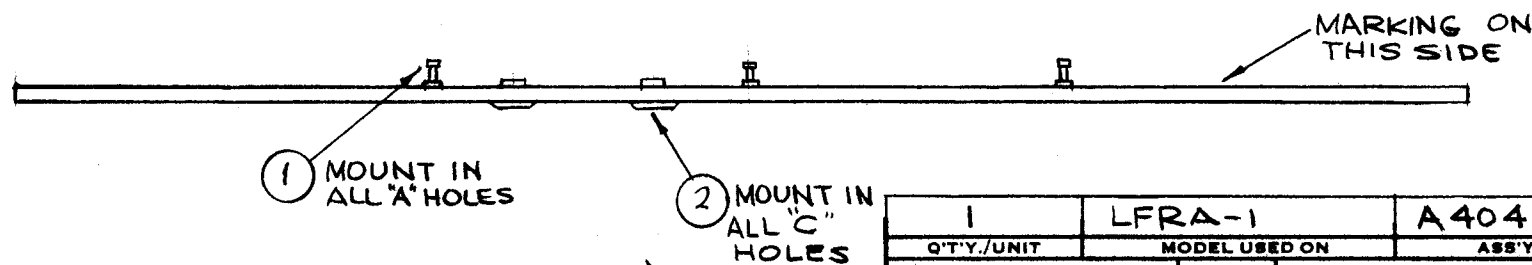
HOLE	DESCRIPTION	REQ
A	.116 DIA.	6
B	DR. #33 (.113 DIA.)	2
C	.190 DIA	2



A4028\*

MACHINING PROCESS: AS PER TMC SPECIFICATION E-737.  
 LETTERING: 1/8 HIGH BLACK BOTHC. LOCATIONS AS SHOWN.  
 FUNGUS PROOFING PER TMC SPECIFICATION B-112 AFTER MARKING PROCESS.  
 \* MARK TMC PART NO. WITH LATEST REVISION LETTER.

MARKING (A4028-2)



SUB-ASSY-(A4028-3)

NOTES

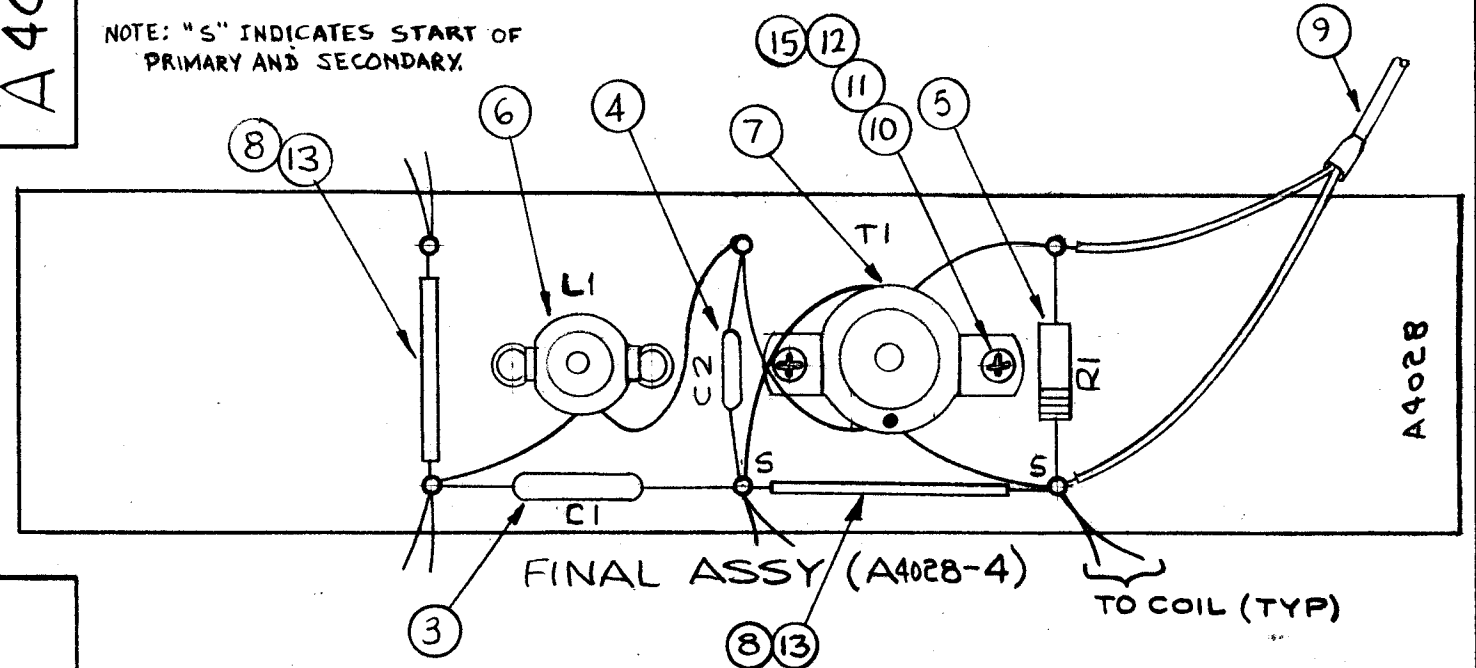
1	LFRA-1	A4049
Q'TY./UNIT	MODEL USED ON	ASS'Y. NO.
SCALE 1:1	CODE A	
THE CONTENTS OF THIS DRAWING ARE THE EXCLUSIVE PROPERTY OF THE TECHNICAL MATERIEL CORP. ITS UNAUTHORIZED USE OR REPRODUCTION IN WHOLE OR IN PART IS STRICTLY FORBIDDEN.		

A4028 B

REVISIONS

SYM	DESCRIPTION	DATE	E.M.N. NO.	DRAFT	CHKD	APPD
X	EXPERIMENTAL RELEASE	11-17-64	X	SRG		
Ø	ORIGINAL RELEASE FOR PRODUCTION	12-15-64	Ø	2.L.		
A	B/M: IT. 1 WAS TE127-3; IT. 15 ADD; FINAL ASSY; "S" NOTE ADD; DOT (•) ADD; HOLE CHART; "A" DIA. WAS .082; ASSY, # WAS A3988.	3-22-65	13598	Ø.L.		
B	IT. 6 WAS A3994, IT. 7 WAS A3993 IT. 8 WAS PX100-1-039	8/16/65	14682	H.V.V.		

NOTE: "S" INDICATES START OF PRIMARY AND SECONDARY.



REQ'D.	ITEM	PART NUMBER	DESCRIPTION	SYMBOL
2	15	FW04-HBN	WASHER, FLAT	
X	14	BS100	SOLDER, TIN ALLOY	
X	13	WL100-7	WIRE, BUSS (#22)	
2	12	NTH0440BN6	NUT, PLAIN, HEX	
2	11	LWEO4MRN	WASHER, LOCK, EXTERNAL	
2	10	SCBP0440BN6	SCREW, MACHINE	
10"	9	RG174/U	COAXIAL CABLE	
X	8	PX104-1-034	INSULATION, SLEEVING	
1	7	TZ183	TRANSFORMER, ASSEMBLY RF	TI
1	6	CL348	COIL ASSEMBLY RF	LI
1	5	RC20GF470J	RESISTOR, FIXED COMP.	RI
1	4	CM112F132G5S	CAPACITOR, FIXED MICA	C2
1	3	CM111F321G5S	CAPACITOR, FIXED MICA	C1
2	2	EY101-2	EYELET, ROLLED FLANGE	C
6	1	TE109-2	TERMINAL STUD	A

O. POSE LIST OF MATERIAL

MATERIAL	SEE MACHINING	THE TECHNICAL MATERIEL CORP. MAMARONECK, NEW YORK	
FINISH	SEE MARKING	TITLE TERMINAL BOARD ASSY	
UNLESS OTHERWISE SPECIFIED DIMENSIONS ARE IN INCHES AND INCLUDE CHEMICALLY APPLIED OR PLATED FINISHES	DRAWN SRG	DATE 11-17-64	FINAL APPROVAL
DECIMALS .X ± .05 .XX ± .01 .XXX ± .005	CHECKED	DATE 12-15-64	DATE 12-15-64
FRACTIONS ± 1/64 ANGLES ± 0° 30'	ELECT. DES.	DATE 12-15-64	SHEET A4028
TOLERANCES	MECH. DES.	DATE	REV. LTR. B