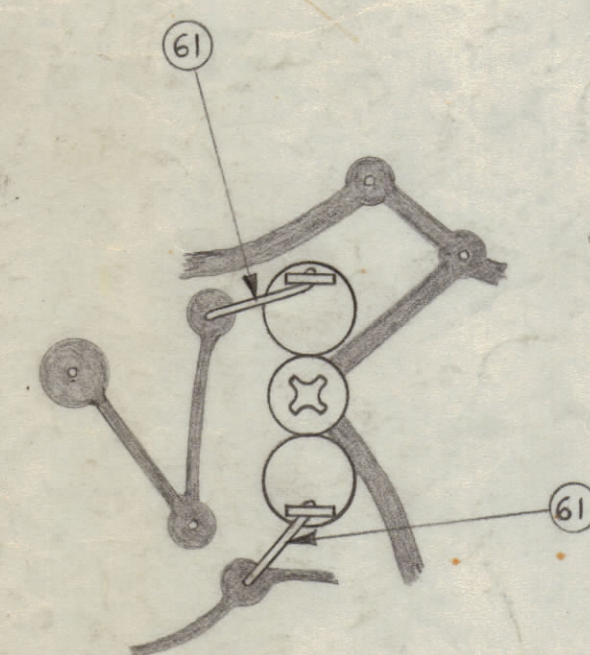
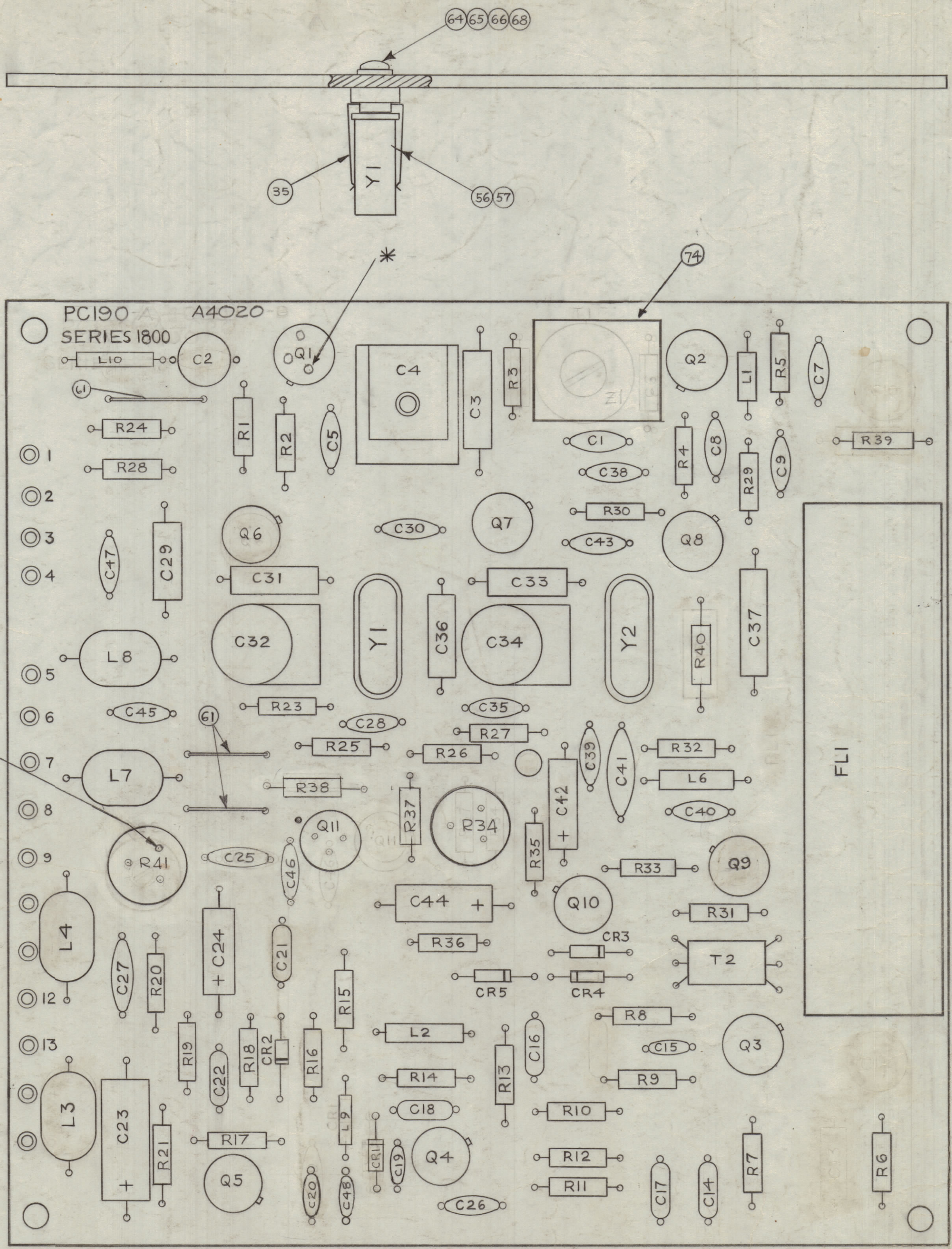
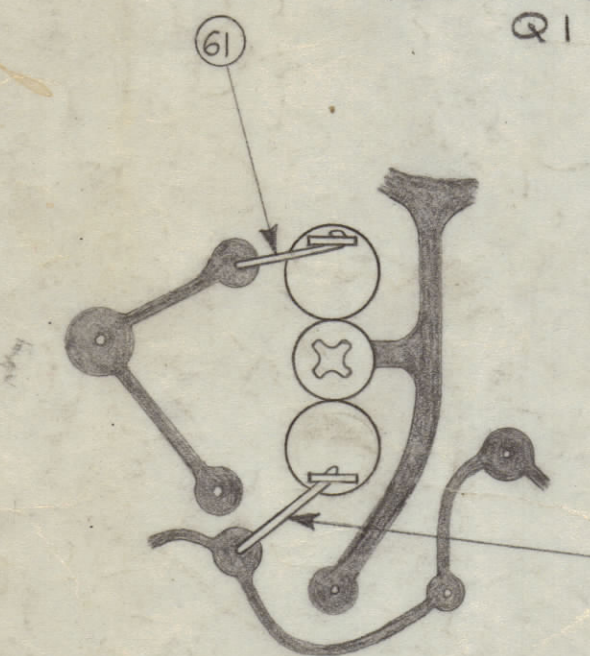


REVISIONS						
ZONE	SYM	DESCRIPTION	DATE	E.M.N. NO.	DRAFT	CHKD
X		EXPERIMENTAL RELEASE	11/25/64		NP	
X		C42 WAS C 39	12/4/64		92	
Ø		ORIGINAL RELEASE FOR PRODUCTION	12/4/64	8	92	
A		B/M: IT.(9) WAS 1513; IT.(19) WAS 2N2084; IT.(20) WAS 2N1308.	12-29-64	13050	92	
B		SECTION LOCATED AROUND B(20N) REVISED	3-2-65	13553	92	
C		IT 17 WAS RC20GF1823; IT 7 WAS RC30GF3323; IT 11 QTY. WAS 4, SYM. R39 AND; IT 29 (1, CL240-100, L5) DELE, IT 38 QTY. WAS 4, SYM. C2 DELE; IT 55 QTY. WAS 2, SYM. C8 DELE, & PIN WAS RELOCATED; IT 71, 72 & 73 ADDED.	4-14-65	13797	92	J.L.
D		57A-25, 57A-26, 57A-27, 57A-28, 57A-29, 57A-30, 57A-31, 57A-32, 57A-33, 57A-34, 57A-35, 57A-36, 57A-37, 57A-38, 57A-39, 57A-40, 57A-41, 57A-42, 57A-43, 57A-44, 57A-45, 57A-46, 57A-47, 57A-48, 57A-49, 57A-50, 57A-51, 57A-52, 57A-53, 57A-54, 57A-55, 57A-56, 57A-57, 57A-58, 57A-59, 57A-60, 57A-61, 57A-62, 57A-63, 57A-64, 57A-65, 57A-66, 57A-67, 57A-68, 57A-69, 57A-70, 57A-71, 57A-72, 57A-73, 57A-74, 57A-75, 57A-76, 57A-77, 57A-78, 57A-79, 57A-80, 57A-81, 57A-82, 57A-83, 57A-84, 57A-85, 57A-86, 57A-87, 57A-88, 57A-89, 57A-90, 57A-91, 57A-92, 57A-93, 57A-94, 57A-95, 57A-96, 57A-97, 57A-98, 57A-99, 57A-100	11/6/65	15160	92	
E		BUILDUP REVISED; ON PICT. R40 WAS 33; ADDED 17, 24, 35. IT 58 WAS RV11U503A (R25)	1/27/66	15560	JL	
F		ADD IT 58 (SYM. R22); ADD 17, 24, 35, 38, 41, 43 TO IT 58; ON IT 97 "Y" WAS "44"	3/7/66	15887	HCA	
G		IT 23 WAS TX108 & IT 21 WAS TX106	6-3-66	16310	LHU	
H		ITEM 58 RV11U503A (R25) CM51C00J03YY(Ø) T2124 (Ø) SC149-1032BB, (Ø) NT137-1032 DELETED, IT (Ø) (Ø) & CALLOUT OF IT (Ø) (Ø) WITH NOTE ADDED, CLARIFIED IT (Ø) ADDED IT (Ø)	7-6-66	16504	Ø	
J		IT 18 ADD R2 CHGD QTY FR 1 TO 2, IT 10 DELE. R2 CHGD QTY, IT 11 ADDR, CHG POS Q8	8-26-66	16810	RME	
K		REVISED & UPDATED	10-21-66	17066	GDL	
L		DELE ALL ELEC. COMP. P/N'S & ADDED NOTE	5-23-67	18244	Ø	



WIRING OF Y2 (CIRCUIT SIDE)



WIRING OF Y1 (CIRCUIT SIDE)

A 3/4" INSULATED WIRE RUNS FROM FREE LEG OF POT TO EMITTER OF Q1

NOTE:  
ITEM 75 TO BE PUT ON ALL FOUR PINS OF FILTER BEFORE MOUNTING TO BOARD

R42 IS ACROSS (CR5)

- ASSEMBLY NOTES:
1. TO MOUNT COMPONENTS, INSERT LEAD THROUGH HOLES & BEND ABOUT 1/16 OF LEAD OVER COPPER FOIL AS SHOWN.
  2. APPLY HEAT & SOLDER TO LEAD & FOIL - CAUTION - TOO MUCH HEAT WILL CAUSE FOIL TO SEPARATE FROM BOARD.
  3. CLEAN & INSPECT AS PER S-676.

NOTE:  
FOR ELECTRICAL COMPONENT PART NO'S, REFER TO NPL A4020. USE SYMBOL NO'S FOR ASSY REF.

REQ'D.	ITEM	DESCRIPTION	SYMBOL
1	78	SEE NOTE	RESISTOR, VAR. COMP.
1	77	SEE NOTE	RESISTOR FIXED COMPOSITION
	76	DELETED	
4	75	WAI09-1	WASHER, FIBER
1	74	A4469	ASSY, PC BOARD
1	73	SEE NOTE	CAPACITOR, FIXED, MICA
1	72		COIL, RF FIXED
1	71		CAPACITOR, VARIABLE, CERAMIC
1	70		COIL RF
2	69	SEE NOTE	RESISTOR, FIXED COMPOSITION
6	68	FW04BN	WASHER, FLAT
2	67	NTH0440BN8	NUT, PLAIN, HEX
2	66	NTH0440BN8	NUT, PLAIN, HEX
4	65	LWE04MRN	WASHER, LOCK, EXTERNAL
2	64	SCBP0440BN7	SCREW, MACHINE
X	63	BS100	SOLDER, TIN ALLOY
11	62	PX829-1	PAD, TRANSISTOR, MOUNTING
1	61	WL100-8	WIRE, BUSS S224
	60	DELETED	
	59	DELETED	
	58	DELETED	
1	57	SEE NOTE	CRYSTAL, QUARTZ 1.5MC
1	56		CRYSTAL, QUARTZ 2.MC
1	55		CAPACITOR, FIXED
1	54	SEE NOTE	CAPACITOR, VARIABLE, CERAMIC
1	53	DELETED	
2	52	SEE NOTE	CAPACITOR, VARIABLE, CERAMIC
1	51	SEE NOTE	CAPACITOR, FIXED, ELECTRICAL
1	50		CAPACITOR, FIXED, ELECTRICAL
1	49		CAPACITOR, FIXED, ELECTRICAL
1	48	SEE NOTE	CAPACITOR, FIXED, ELECTRICAL
1	47	DELETED	
1	46	SEE NOTE	CAPACITOR, FIXED, ELECTRICAL
1	45	SEE NOTE	CAPACITOR, FIXED, ELECTRICAL
1	44	DELETED	
2	43	SEE NOTE	CAPACITOR, FIXED, MICA
1	42	DELETED	
2	41	SEE NOTE	CAPACITOR, FIXED, CERAMIC
6	40		CAPACITOR, FIXED, CERAMIC
4	39		CAPACITOR, FIXED, CERAMIC
3	38		CAPACITOR, FIXED, CERAMIC
5	37		CAPACITOR, FIXED, CERAMIC
9	36		CAPACITOR, FIXED, CERAMIC
2	35		RETAINER, CRYSTAL HOLDER
2	34		SOCKET, CRYSTAL
1	33	SEE NOTE	FILTER, BANDPASS 6KC BAND WIDTH
1	32	DELETED	
1	31	SEE NOTE	TRANSFORMER, PULSE
1	30	SEE NOTE	COIL, RF, FIXED
2	29	DELETED	
4	28	SEE NOTE	COIL, RF, FIXED
1	27		COIL, RF, FIXED
1	26		COIL, RF, FIXED
2	25		SECOND DEVICE, DIODE
3	24		SECOND DEVICE, DIODE
1	23		TRANSISTOR
1	22		TRANSISTOR
1	21		TRANSISTOR
7	19		TRANSISTOR
3	18	SEE NOTE	RESISTOR, FIXED, COMPOSITION
1	17	DELETED	
1	16	SEE NOTE	RESISTOR, FIXED, COMPOSITION
1	15		RESISTOR, FIXED, COMPOSITION
5	14		RESISTOR, FIXED, COMPOSITION
1	13		RESISTOR, FIXED, COMPOSITION
L	12		RESISTOR, VAR. COMP.
6	11		RESISTOR, FIXED COMPOSITION
7	10		RESISTOR, FIXED COMPOSITION
1	9		RESISTOR, FIXED COMPOSITION
2	8	SEE NOTE	RESISTOR, FIXED, COMPOSITION
2	7	DELETED	
2	6	SEE NOTE	RESISTOR, FIXED, COMPOSITION
2	5		RESISTOR, FIXED, COMPOSITION
3	4		RESISTOR, FIXED, COMPOSITION
1	3		RESISTOR, FIXED, COMPOSITION
1	2	SEE NOTE	RESISTOR, FIXED, COMPOSITION
1	1	PC190	PRINTED CIRCUIT BOARD

T. AALTONEN		LIST OF MATERIAL	
MATERIAL	—	THE TECHNICAL MATERIEL CORP.	
FINISH	—	MAMARONECK, NEW YORK	
		TITLE	
		PRINTED CIRCUIT BOARD ASSY	
		IF AMPL	
		DRAWN	DATE
		11-25-64	
		CHECKED	DATE
		12-5-64	
		ELECT. DES.	DATE
		12-5-64	
		MECH. DES.	DATE
		A4020 L	
		REV. LTR.	

STR-2		MODEL USED ON		ASSY. NO.	
QTY./UNIT	SCALE	CODE			
2:1	2:1	A			

THE CONTENTS OF THIS DRAWING ARE THE EXCLUSIVE PROPERTY OF THE TECHNICAL MATERIEL CORP. ITS UNAUTHORIZED USE OR REPRODUCTION IN WHOLE OR IN PART IS STRICTLY FORBIDDEN.

NOTES