

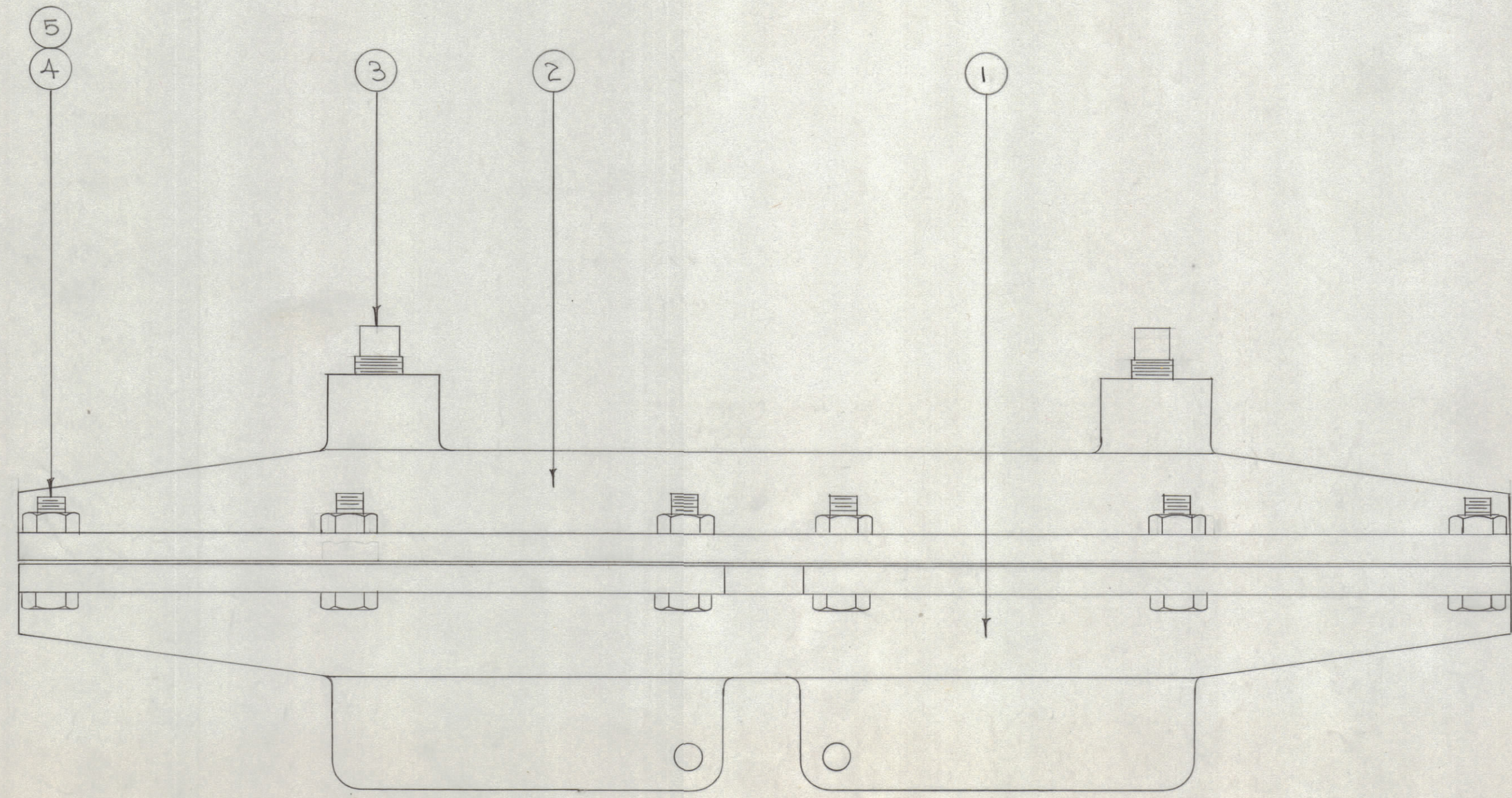
IF IT IS FOUND DESIRABLE TO CHANGE ANY TOLERANCE OR OTHER DETAIL SPECIFIED ON THIS DRAWING NOTIFY THE PURCHASER PROMPTLY.

MAXIMUM ALLOWABLE TOLERANCES HAVE BEEN DETERMINED AND DEVIATIONS WILL BE CAUSE FOR REJECTION. REMOVE ALL BURRS AND SHARP EDGES

NOTICE TO PERSONS RECEIVING THIS DRAWING

THE TECHNICAL MATERIEL CORPORATION claims proprietary right in the material disclosed hereon. This drawing is issued in confidence for engineering information only and may not be reproduced or used to manufacture anything shown hereon without permission from THE TECHNICAL MATERIEL CORPORATION to the user. This drawing is loaned for mutual assistance and is subject to recall at any time.

Property of:
 THE TECHNICAL MATERIEL CORPORATION
 MAMARONECK, NEW YORK



A-498

12	5	NTH2520SC1A	NUT, HEX	
12	4	SC-101	BOLT, HEX HEAD	
2	3	SC-121-3	PIPE PLUG	
1	2	PM-291	MATING JACKET	
1	1	PM-290	GROOVED JACKET	
REQ. ITEM	PART NO.		DESCRIPTION	SYMBOL
#			THE TECHNICAL MATERIEL CORP. MAMARONECK, NEW YORK	
#			STOCK SIZE	
#			PROTECTOR SHIELD ASSEMBLY	
MATERIAL		WEIGHT PER PC.	CDD. 4-29-54	
#			TYPE & TEMPER	
#			DRAWN	
#			HEAT TREAT. SPEC.	
#			FINISH & SPEC. NO.	
#			CHECKED	
#			FINAL APPROVAL	
#			A-498	

ISSUE	ITEM	CHANGED FROM	DATE	CN. NO.	DRAFTS	CHECKER	ENG. APP.
TOLERANCES		SCALE: 1/4"					
ALL OTHERS	DEC. DIM. ± FRAC. DIM. ± ANGULAR DIM. ±	DRILL, PUNCH, COMMERCIAL STOCK SIZES AND MANUFACTURERS TOLERANCES ARE NOT INCLUDED.					

5	K5-85-X	J-227		A-29-54
MODEL	PROJECT NO.	ASS'Y. NO.	DATE	
USED ON				