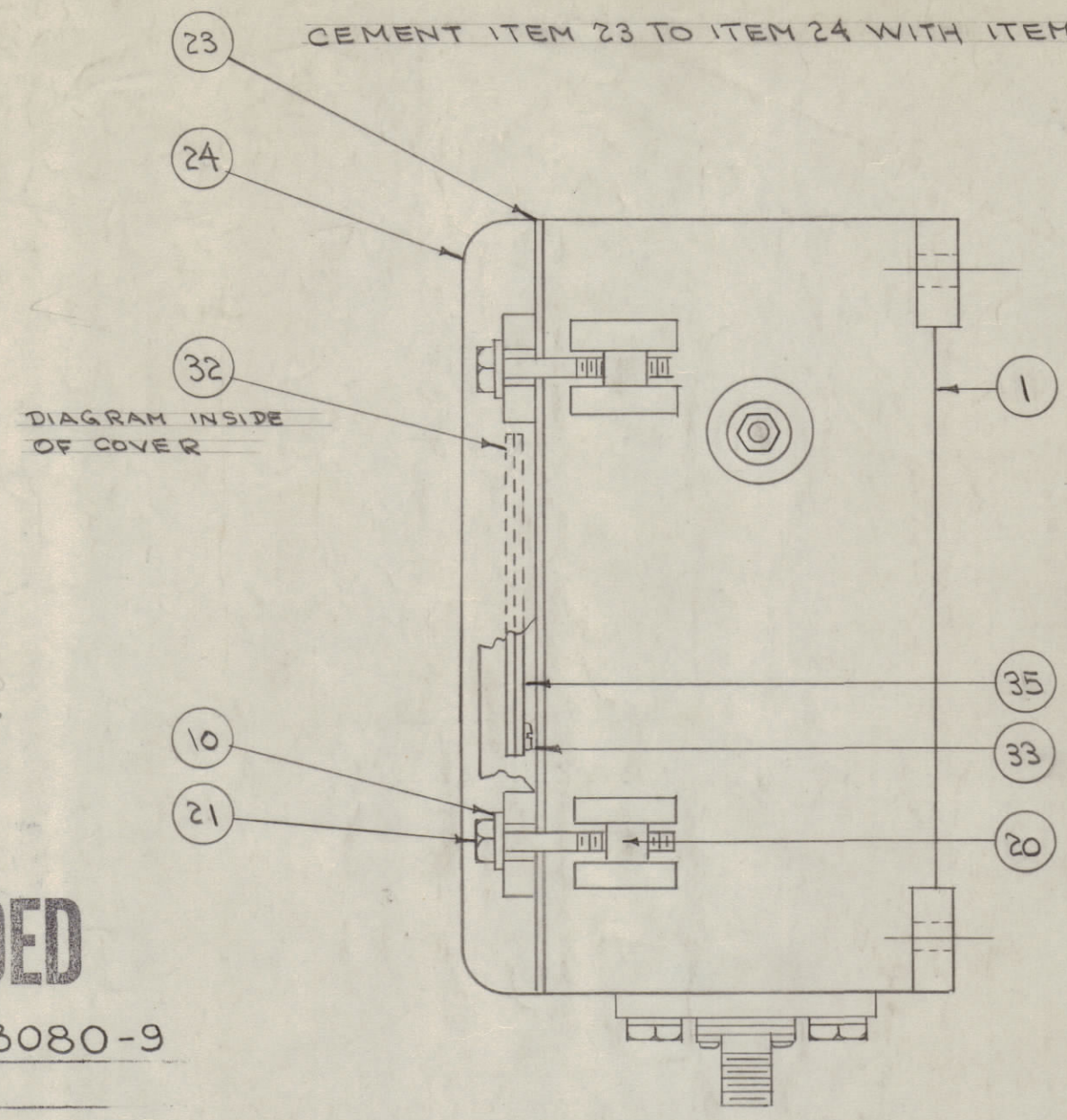
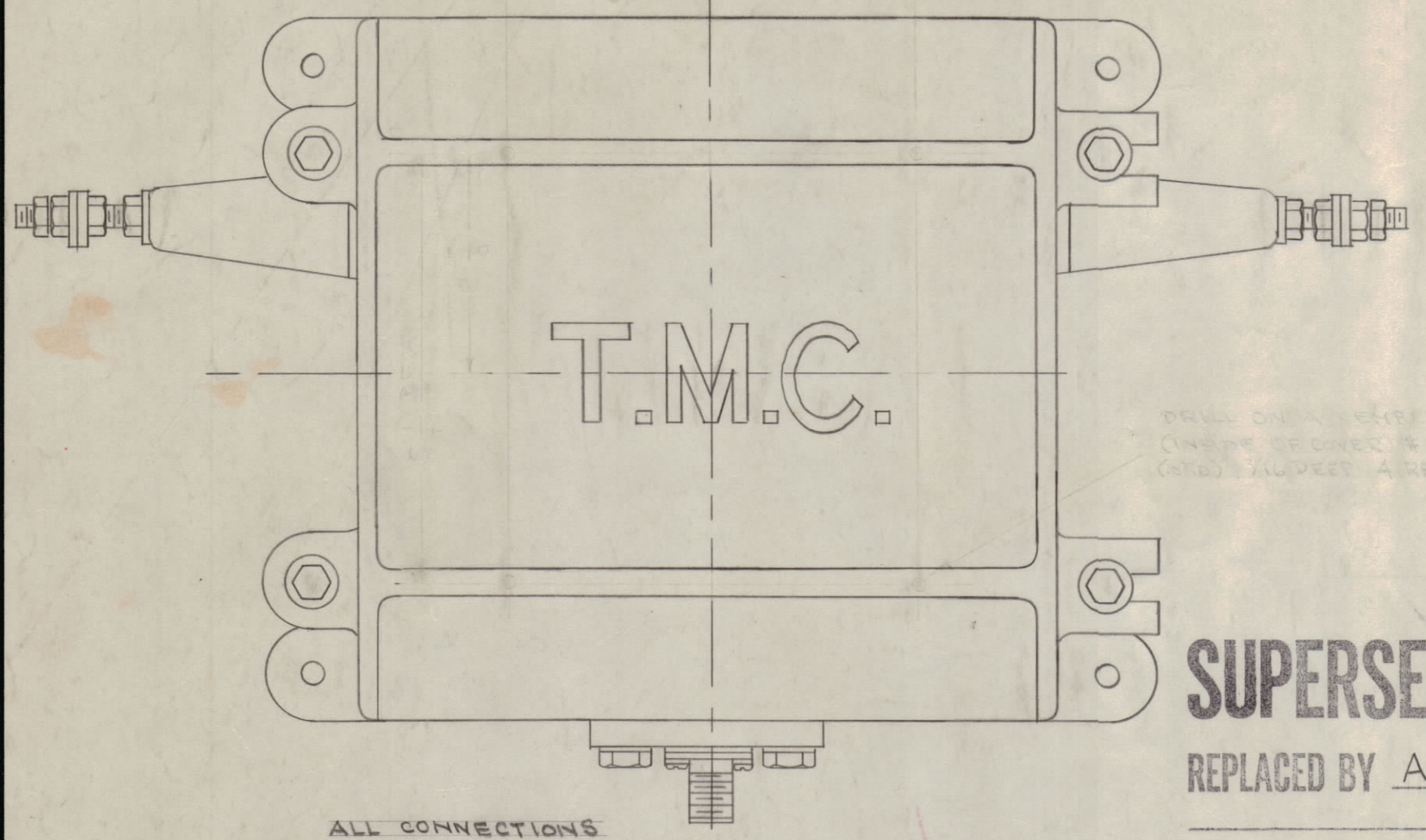


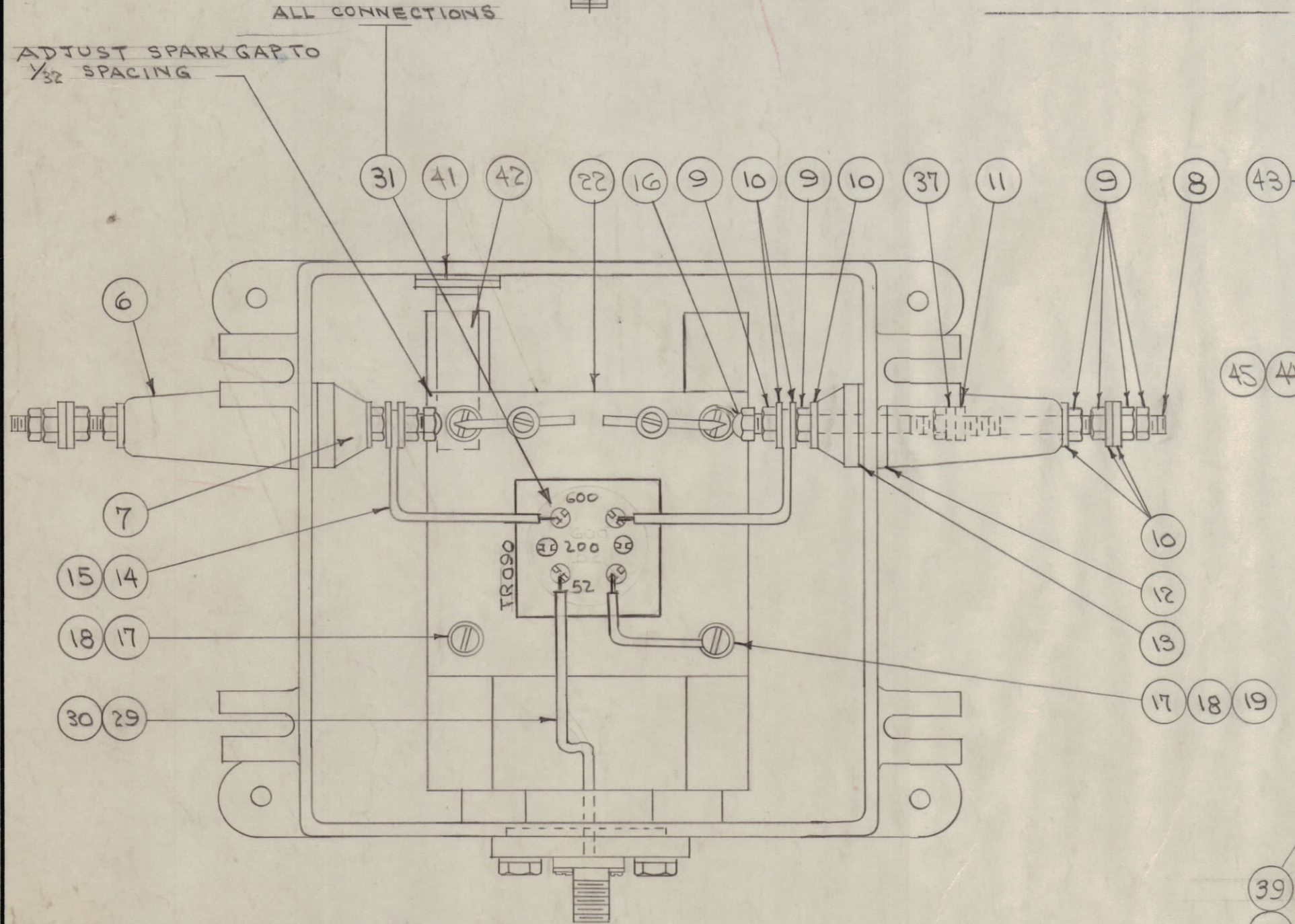
IF IT IS FOUND DESIRABLE TO CHANGE ANY TOLERANCE OR OTHER DETAIL SPECIFIED ON THIS DRAWING NOTIFY THE PURCHASER PROMPTLY.

MAXIMUM ALLOWABLE TOLERANCES HAVE BEEN DETERMINED AND DEVIATIONS WILL BE CAUSE FOR REJECTION. REMOVE ALL BURRS AND SHARP EDGES

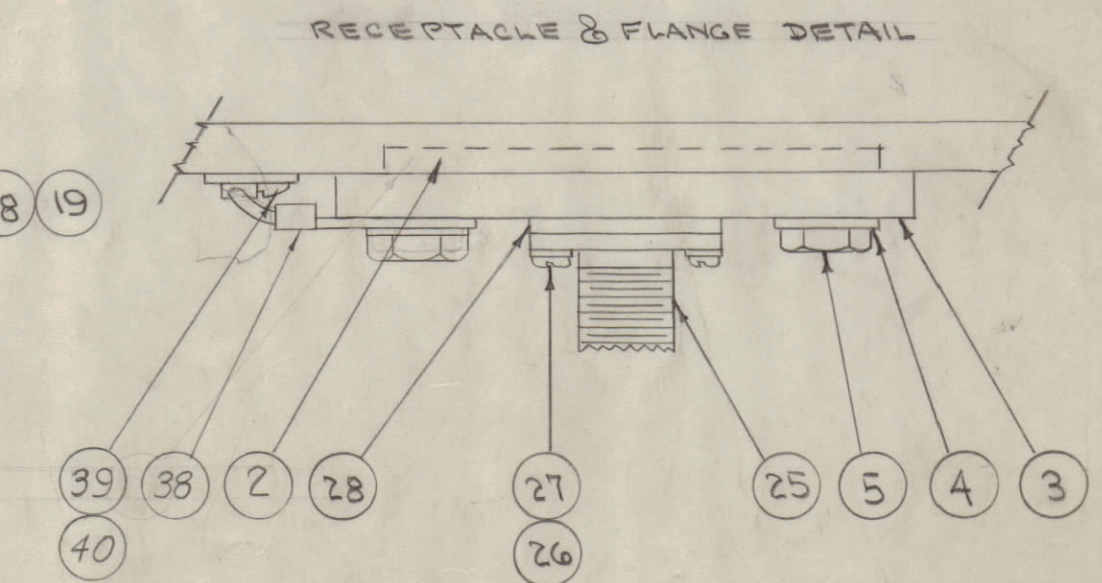
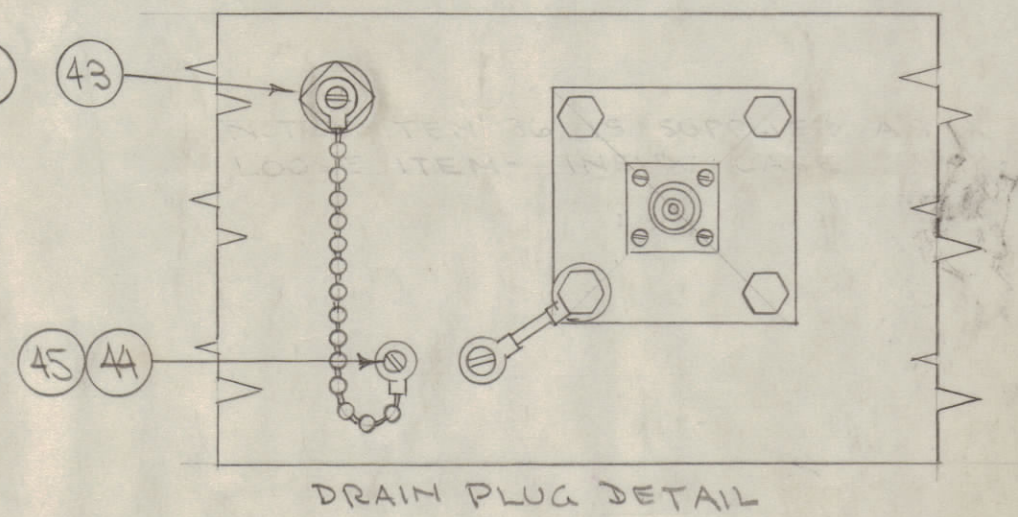


**SUPERSEDED**  
REPLACED BY A-3080-9

1	45	LWE06HSS	WASHER, LOCK
1	44	SCBS0632SS3	SCREW, MACHINE
1	43	A-1291	DRAIN PLUG ASSY.
1	42	MS-933	HOLDER, DESSICANT
2	41	AD-101-1/6	DESSICANT
1	40	SCBS1032SS4	SCREW, MACHINE
1	39	LWE10MSS	LOCKWASHER
1	38	A-1164	GROUND STRAP, CASE
2	37	FW25LBC	WASHER, FLAT
1	36	UG-495/U	PLUG (LOOSE ITEM INSIDE)
1	35	PX-115	GUARD
X	34	GL-101-2	CEMENT, PLOBOND
4	33	SC-102-1	SCREW, THD. CUTTING
1	32	LD-151	SCHEMATIC DIAGRAM
X	31	BS-100	SOLDER, SOFT
8"	30	PX-104-1-.066	INSULATION, SLEEVING
9"	29	WL-100-3	WIRE, BUSS BAR
1	28	GA-116	GASKET
4	27	LWS04MSS	WASHER, LOCK
4	26	SCBS0440SS6	SCREW, MACHINE
1	25	UG-496/U	RECEPTACLE
1	24	PM-105	COVER
1	23	GA-103	GASKET, COVER
1	22	A-482	TRANSFORMER, SUB ASSY.



NOTE: ITEM 36 IS SUPPLIED AS A LOOSE ITEM, INSIDE CASE.



A-481 H

4	21	SC-108-9	BOLT, HEX
4	20	PM-100	PIN, COVER BOLT
1	19	FW08MBC	WASHER, FLAT
4	18	LWE08MRC	WASHER, LOCK
4	17	SCBS0832BC6	SCREW, MACHINE
2	16	NHC2520BCL	NUT, CAP
4"	15	PX-104-1-.066	INSULATION, SLEEVING
6"	14	WL-100-3	WIRE, BUSS BAR
2	13	GA-101	GASKET
2	12	GA-100	"
2	11	GA-104	"
20	10	FW25MSS	WASHER, FLAT
12	9	NTH2520SS14	NUT, HEX
2	8	A-100	STUD, SUB ASSY.
2	7	NS-101	INSULATOR, INSIDE
2	6	NS-100	" , OUTSIDE
4	5	SC-108-4	BOLT, HEX
4	4	LWS25MSS	WASHER, LOCK
1	3	PM-245	FLANGE
1	2	GA-102	GASKET
1	1	PM-106	CASE

F	1	TRANSFORMER PICTORIAL CHANGED FROM TR-03216TR090	6/28/61	5157	DDM	JSE	SPK
E	1	RAC-7 WAS RAC-7A	3/21/58	5	WLD	WLD	WLD
D	1	ITEMS 41 THRU 45 ADDED	6/10/54	4	WLD	WLD	WLD
C	1	RAC-7A WAS RAC-7	3/14/56	3	WLD	WLD	WLD
B	1	ITEMS 38, 39 & 40 ADDED	1-23-55	2	WLD	WLD	WLD
A	1	REDRAWN - ITEM 37 ADDED	7/15/54	1	WLD	WLD	WLD

ISSUE	ITEM	CHANGED FROM	DATE	CN. NO.	DRAFTS	CHECKER	ENG. APP.
TOLERANCES		SCALE: 1" = 1"					
ALL OTHERS	DEC. DIM. ±	DRILL, PUNCH, COMMERCIAL STOCK SIZES AND MANUFACTURERS TOLERANCES ARE NOT INCLUDED.					
	FRAC. DIM. ±						
	ANGULAR DIM. ±						

H	"SUPERSEDED" NOTE ADDED	6-9-64	11509	KB	@	WLD
G	ITEM 45 WAS LWE06MRN, 44 WAS SCBS0632BC3	8-17-62	7076	GS	JSE	WLD
	ITEM 40 WAS SCBS0632BC4, 39 WAS LWE10MRC					
ISSUE	CHANGED FROM	DATE	CN. NO.	DRAFT	CHECKER	ENG. APP.

RAC-7	209		6-25-53
MODEL	PROJECT NO.	ASSY. NO.	DATE
USED ON			

REQ. ITEM	PART NO.	DESCRIPTION	SYMBOL
THE TECHNICAL MATERIEL CORP. MAMARONECK, NEW YORK			
CASE & COVER ASSEMBLY			
RAC-7			
CDB. 2-15-54			
STOCK SIZE		DRAWN	ELEC. DES. APP.
MATERIAL		WEIGHT PER PC.	MECH. DES. APP.
TYPE & TEMPER		CHECKED	
HEAT TREAT. SPEC.		FINAL APPROVAL	
FINISH & SPEC. NO.		A-481 H	