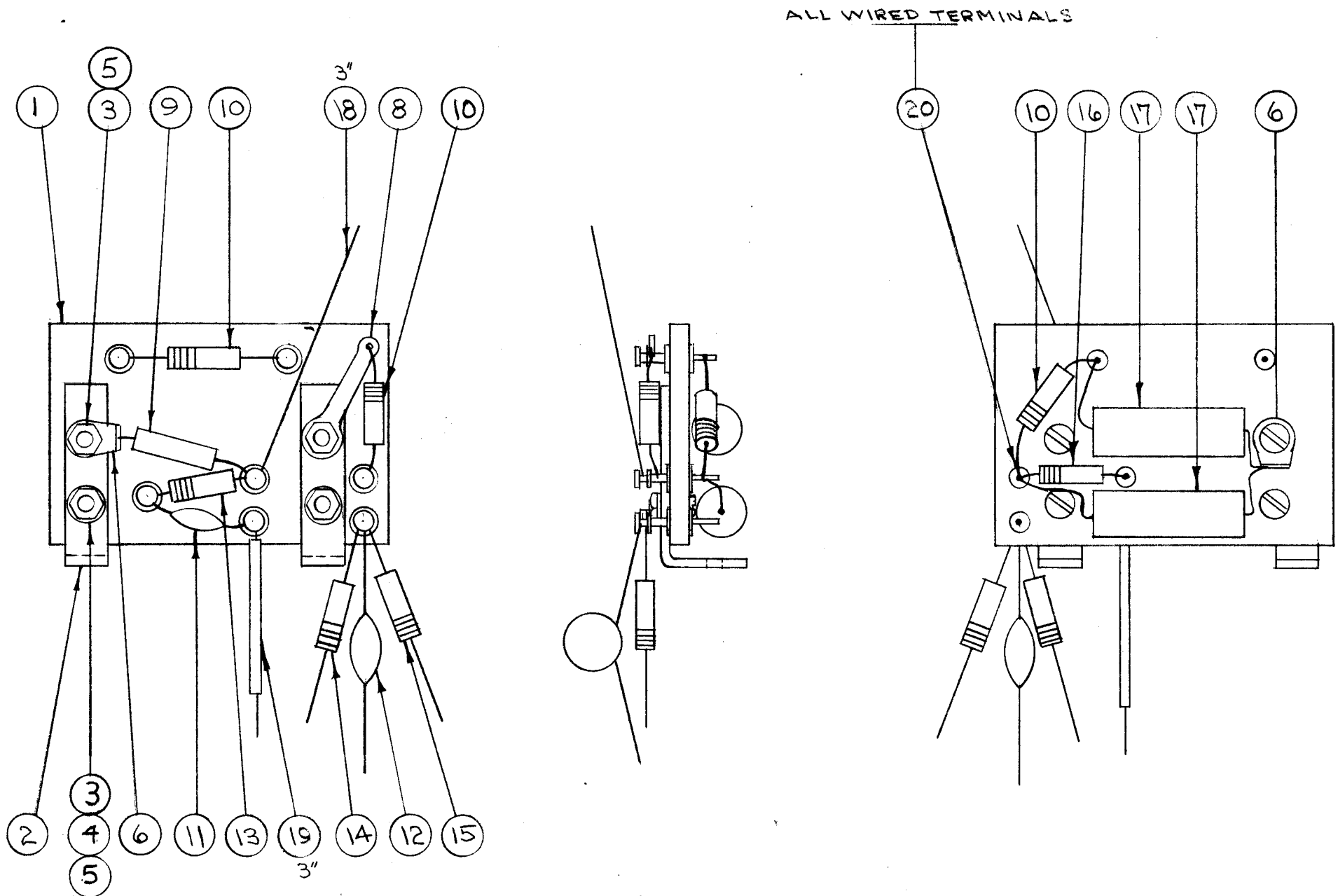


IF IT IS FOUND DESIRABLE TO CHANGE ANY TOLERANCE OR OTHER DETAIL SPECIFIED ON THIS DRAWING NOTIFY THE PURCHASER PROMPTLY.

MAXIMUM ALLOWABLE TOLERANCES HAVE BEEN DETERMINED AND DEVIATIONS WILL BE CAUSE FOR REJECTION. REMOVE ALL BURRS AND SHARP EDGES

A-464 B



X	20	BS-100	SOLDER, SOFT	
3"	19	MWC22(7)U96	CABLE, INSULATED	WH/ BLUE
3"	18	WL-100-8	WIRE, BUSS BAR	
2	17	CN-100-3	CAPACITOR, FIXED .05 μ f	C129 C130
1	16	RC20GF124K	RESISTOR, FIXED 120K	R132
1	15	RC20GF102J	RESISTOR, FIXED 1000 Ω	R135
1	14	RC20GF181K	RESISTOR, FIXED 180 Ω	R134
1	13	RC20GF823J	RESISTOR, FIXED 82K	R133
1	12	CC-100-15	CAPACITOR, FIXED .005 μ f	C133
1	11	CC-100-9	CAPACITOR, FIXED .001 μ f	C132
3	10	RC20GF474K	RESISTOR, FIXED 470K	R129 R130 R131
1	9	CC21SL220J	CAPACITOR, FIXED 22 μ f	C131
1	8	TE-104-2	TERMINAL, LOCKING	
#	7	DELETED		
2	6	TE-110-2	LUG, SOLDER	
4	5	NTH0440BN8	NUT, HEX.	
3	4	LW504MRN	LOCKWASHER, SPLIT	
4	3	SCBS0440BN6	SCREW, MACHINE	
2	2	MS-343	BRACKET, TERM. BD.	
1	1	A-1179	BOARD, TERMINAL (REACT.)	

REQ.	ITEM	PART NO.	DESCRIPTION	SYMBOL
#			THE TECHNICAL MATERIEL CORP. MAMARONECK. NEW YORK	
STOCK SIZE				
#			TERMINAL BOARD ASSEMBLY	
#			REACTANCE	
#			C.D.D. 4-23-53	
#			DRAWN	
#			ELEC. DES. APP.	
#			MECH. DES. APP.	
#			CHECKED	
#			FINAL APPROVAL	
#			A-464 B	
#			FINISH & SPEC. NO.	

ISSUE	ITEM	CHANGED FROM	DATE	CN. NO.	DRAFTS	CHECKER	ENG. APP.
B	2	ALL HDWRE. CHGD. FROM CAD. TO NICKEL	9-22-61	5602	LE	ab	LB
A	1	ITEM 19 WAS SRIR-3/8(7)22U96					
A	2	ITEM 7 WAS TE-131-4	12/14/53	1	PC	JAD	WDC
A	1	ITEM 1 WAS PX-166					

TOLERANCES		SCALE:
ALL OTHERS	DEC. DIM. \pm FRAC. DIM. \pm ANGULAR DIM. \pm	DRILL, PUNCH, COMMERCIAL STOCK SIZES AND MANUFACTURERS TOLERANCES ARE NOT INCLUDED.

FFR-3S	104	A-263	5-13-53
MODEL	PROJECT NO.	ASS'Y. NO.	DATE
USED ON			