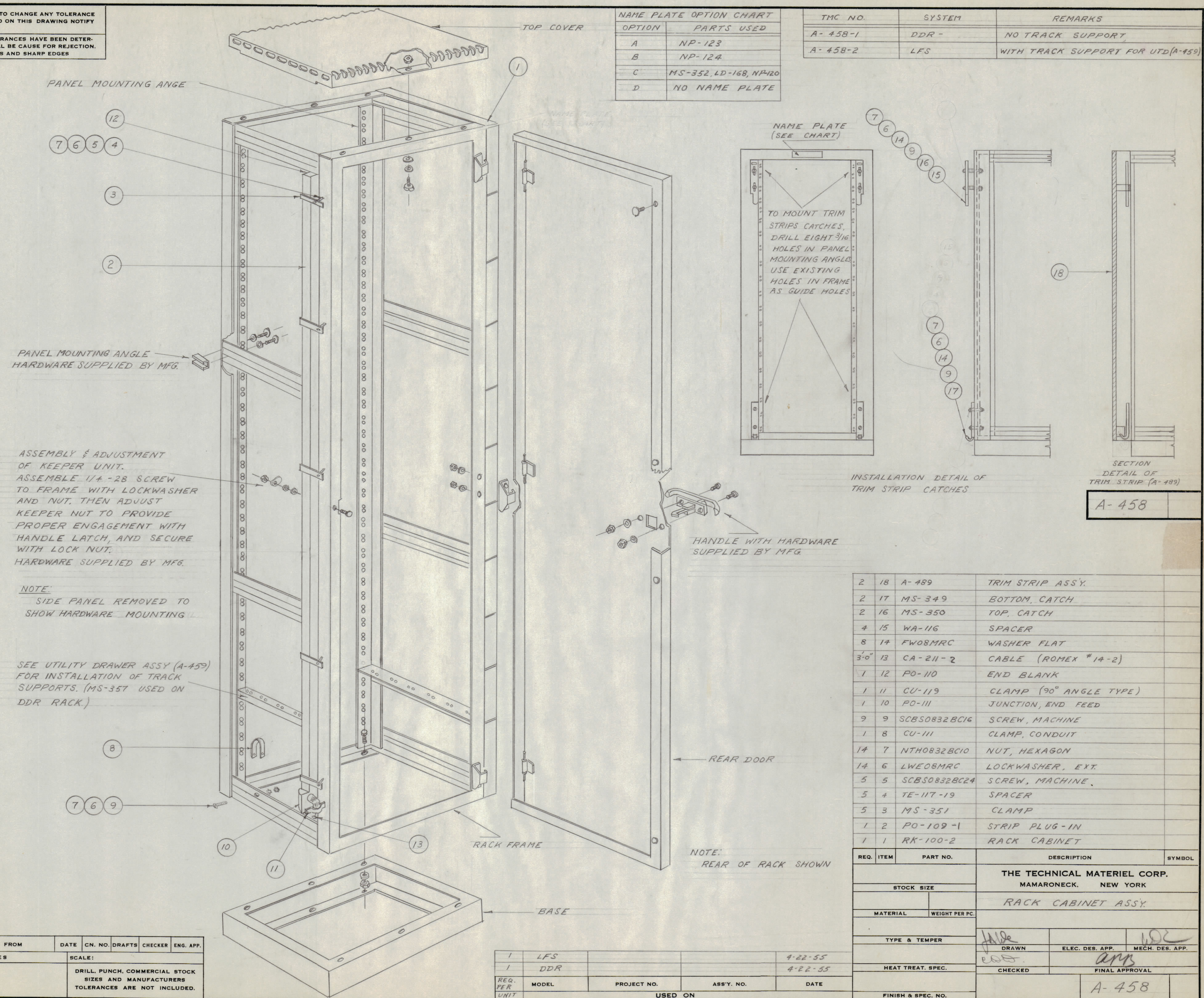


IF IT IS FOUND DESIRABLE TO CHANGE ANY TOLERANCE OR OTHER DETAIL SPECIFIED ON THIS DRAWING NOTIFY THE PURCHASER PROMPTLY.

MAXIMUM ALLOWABLE TOLERANCES HAVE BEEN DETERMINED AND DEVIATIONS WILL BE CAUSE FOR REJECTION. REMOVE ALL BURRS AND SHARP EDGES

NAME PLATE OPTION CHART	
OPTION	PARTS USED
A	NP-123
B	NP-124
C	MS-352, LD-168, NP-120
D	NO NAME PLATE

TMC NO.	SYSTEM	REMARKS
A-458-1	DDR-	NO TRACK SUPPORT
A-458-2	LFS	WITH TRACK SUPPORT FOR UTD(A-459)

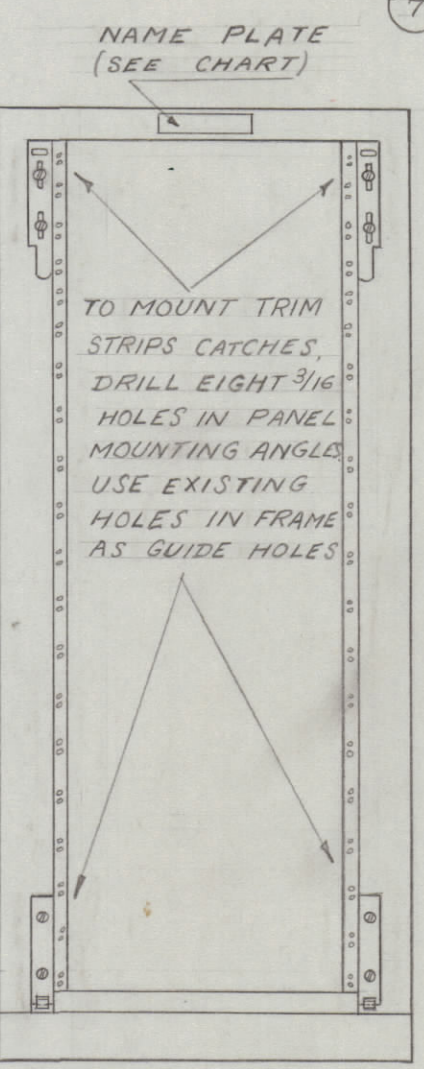


PANEL MOUNTING ANGLE HARDWARE SUPPLIED BY MFG.

ASSEMBLY & ADJUSTMENT OF KEEPER UNIT. ASSEMBLE 1/4-28 SCREW TO FRAME WITH LOCKWASHER AND NUT. THEN ADJUST KEEPER NUT TO PROVIDE PROPER ENGAGEMENT WITH HANDLE LATCH, AND SECURE WITH LOCK NUT. HARDWARE SUPPLIED BY MFG.

NOTE: SIDE PANEL REMOVED TO SHOW HARDWARE MOUNTING

SEE UTILITY DRAWER ASSY (A-459) FOR INSTALLATION OF TRACK SUPPORTS. (MS-357 USED ON DDR RACK.)



INSTALLATION DETAIL OF TRIM STRIP CATCHES

SECTION DETAIL OF TRIM STRIP (A-489)

2	18	A-489	TRIM STRIP ASS'Y.
2	17	MS-349	BOTTOM CATCH
2	16	MS-350	TOP CATCH
4	15	WA-116	SPACER
8	14	FW08MRC	WASHER FLAT
3'-0"	13	CA-211-2	CABLE (ROMEX #14-2)
1	12	PO-110	END BLANK
1	11	CU-119	CLAMP (90° ANGLE TYPE)
1	10	PO-111	JUNCTION, END FEED
9	9	SCBS0832BC16	SCREW, MACHINE
1	8	CU-111	CLAMP, CONDUIT
14	7	NTH0832BC10	NUT, HEXAGON
14	6	LWE08MRC	LOCKWASHER, EXT.
5	5	SCBS0832BC24	SCREW, MACHINE
5	4	TE-117-19	SPACER
5	3	MS-351	CLAMP
1	2	PO-109-1	STRIP PLUG-IN
1	1	RK-100-2	RACK CABINET

NOTE: REAR OF RACK SHOWN

REQ. ITEM	PART NO.	DESCRIPTION	SYMBOL
THE TECHNICAL MATERIEL CORP. MAMARONECK, NEW YORK			
RACK CABINET ASS'Y.			
STOCK SIZE			
MATERIAL		WEIGHT PER PC.	
TYPE & TEMPER			
HEAT TREAT. SPEC.			
FINISH & SPEC. NO.			

ISSUE ITEM	CHANGED FROM	DATE	CN. NO.	DRAFTS	CHECKER	ENG. APP.
TOLERANCES						
SCALE:						
DRILL, PUNCH, COMMERCIAL STOCK SIZES AND MANUFACTURERS TOLERANCES ARE NOT INCLUDED.						

1	LFS			4-22-55
1	DDR			4-22-55
REQ. PER UNIT	MODEL	PROJECT NO.	ASS'Y. NO.	DATE
USED ON				