

IF IT IS FOUND DESIRABLE TO CHANGE ANY TOLERANCE OR OTHER DETAIL SPECIFIED ON THIS DRAWING NOTIFY THE PURCHASER PROMPTLY.

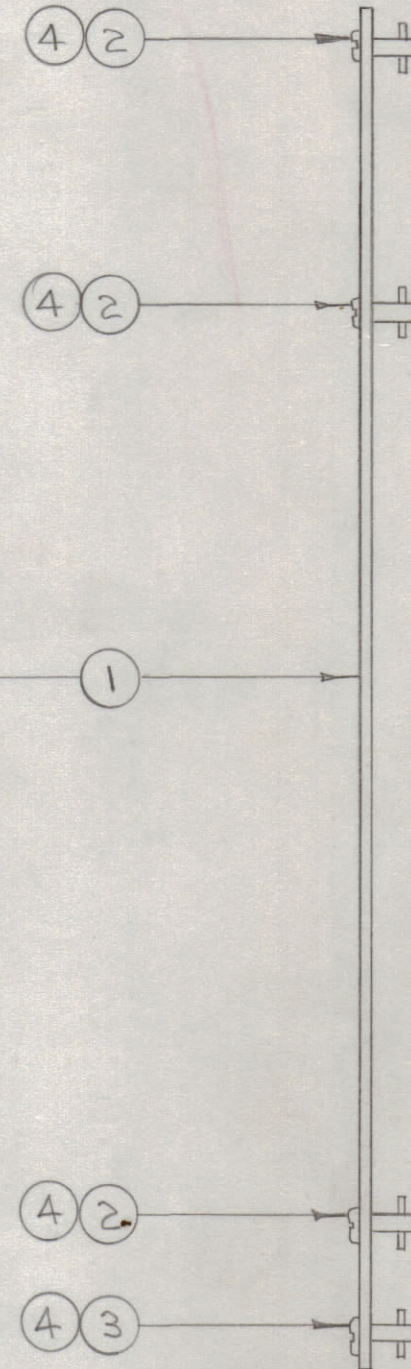
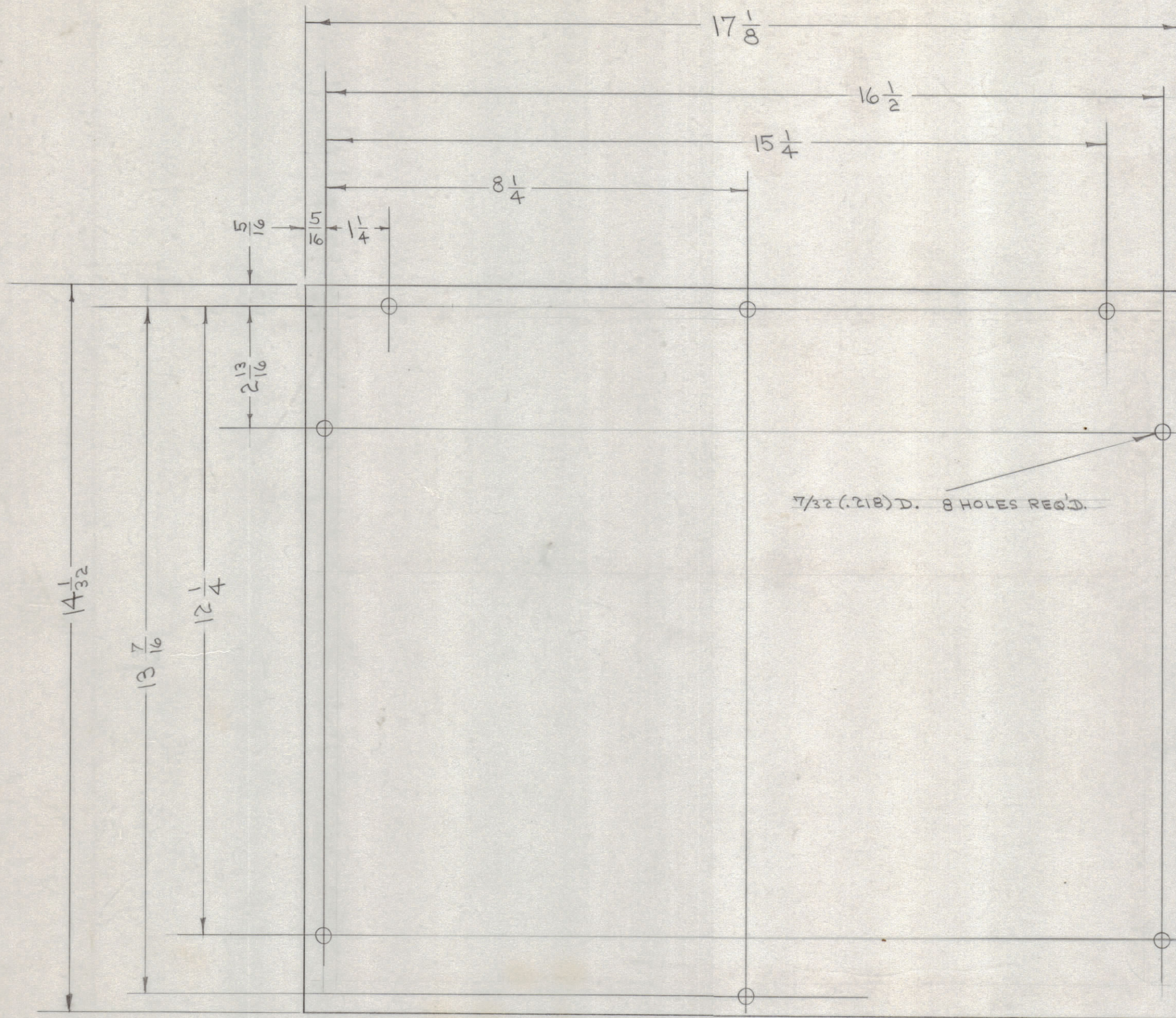
MAXIMUM ALLOWABLE TOLERANCES HAVE BEEN DETERMINED AND DEVIATIONS WILL BE CAUSE FOR REJECTION. REMOVE ALL BURRS AND SHARP EDGES

NOTICE TO PERSONS RECEIVING THIS DRAWING

THE TECHNICAL MATERIEL CORPORATION claims proprietary right in the material disclosed hereon. This drawing is issued in confidence for engineering information only and may not be reproduced or used to manufacture anything shown hereon without permission from THE TECHNICAL MATERIEL CORPORATION to the user. This drawing is loaned for mutual assistance and is subject to recall at any time.

Property of:

THE TECHNICAL MATERIEL CORPORATION
MAMARONECK, NEW YORK



A-456 B

B	1	S404-IRIDITE WAS SID-CAUSTIC DIP	12-8	1001	EMN	
A	1	DVM ADDED	5/28	1	EMN	
ISSUE	ITEM	CHANGED FROM	DATE	CN. NO. DRAFTS	CHECKER	ENG. APP.
TOLERANCES		SCALE: 1/8"				
ALL OTHERS	DEC. DIM. ±	DRILL, PUNCH, COMMERCIAL STOCK SIZES AND MANUFACTURERS TOLERANCES ARE NOT INCLUDED.				
	FRAC. DIM. ±					
	ANGULAR DIM. ±					

DVM	199	5-28-53
DCU	200	9-7-51
MODEL	PROJECT NO.	DATE

8	4	PN-105	CROSS PIN
1	3	FS-105-1	STUD
7	2	FS-105-5	STUD
1	1	MS-235	BOTTOM COVER (NO DWG.)
REQ. ITEM	PART NO.	DESCRIPTION	SYMBOL
.051		THE TECHNICAL MATERIEL CORP.	
STOCK SIZE		MAMARONECK, NEW YORK	
ALUMINUM		COVER, BOTTOM	
MATERIAL		WEIGHT PER PC.	
528-H32		C.D.D. 5-7-53	
TYPE & TEMPER		DRAWN	MECH. DES. APP.
#		DCU 5/2/53	EMN
HEAT TREAT. SPEC.		CHECKED	FINAL APPROVAL
S404 YEL IRIDITE		A-456 B	
FINISH & SPEC. NO.			