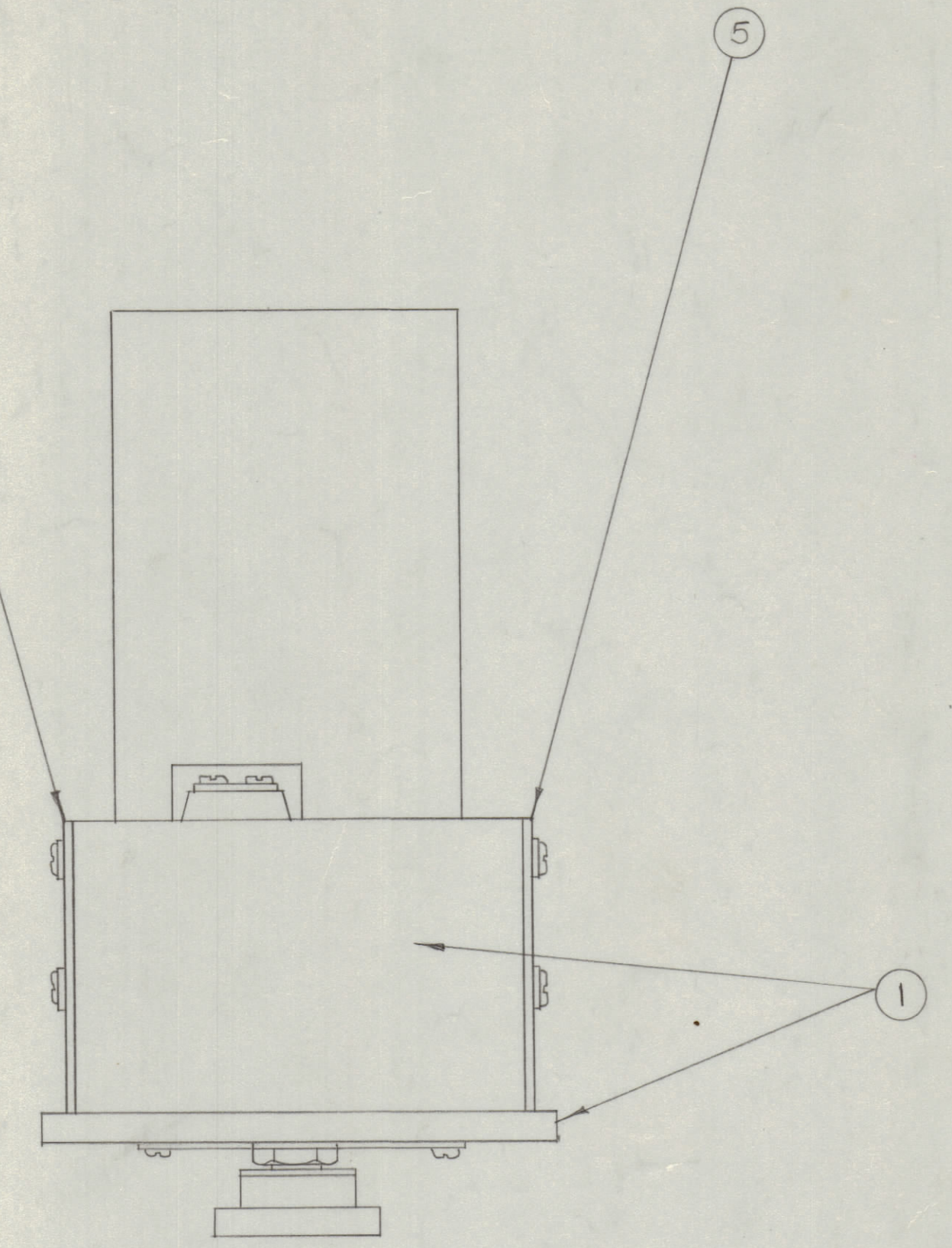
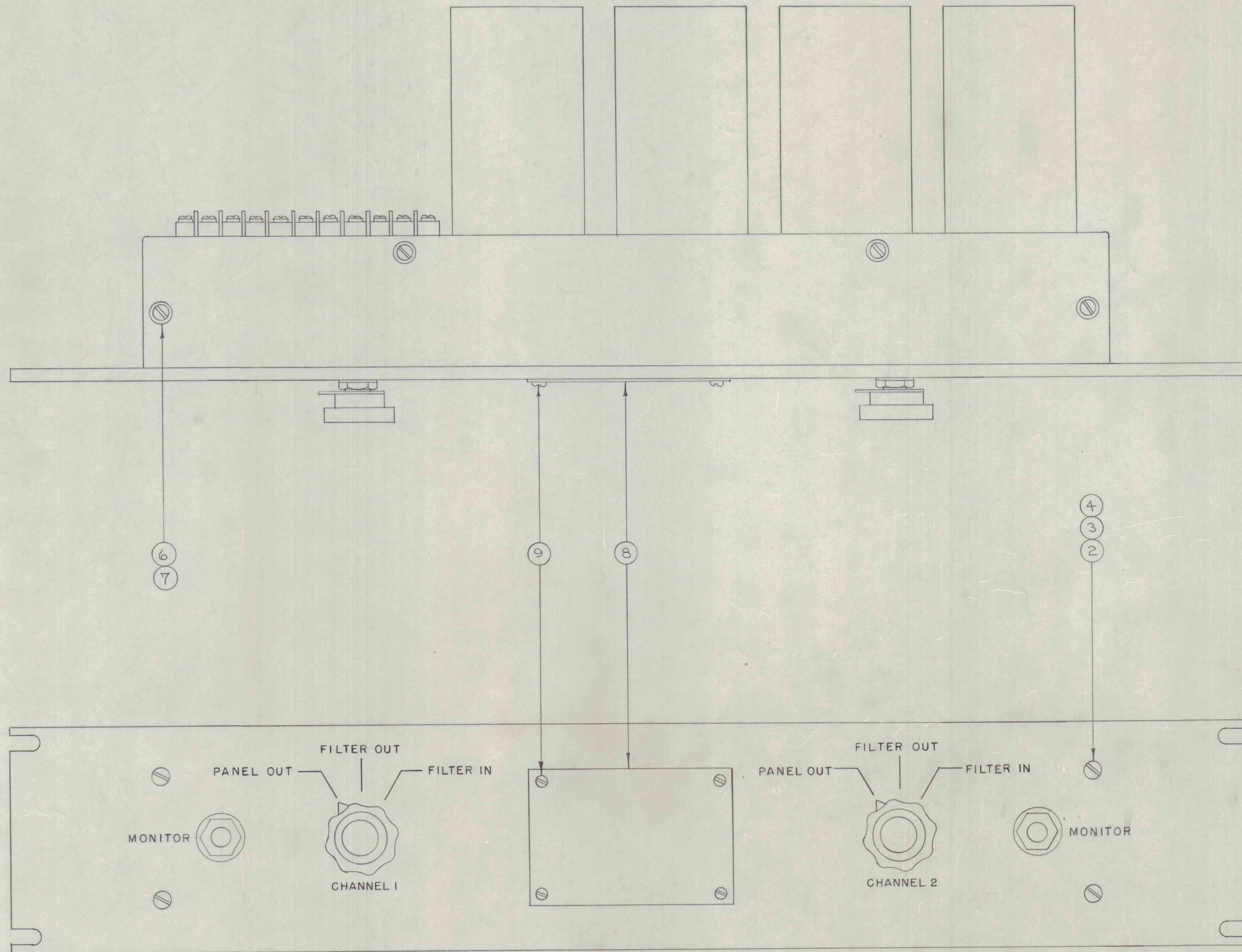


IF IT IS FOUND DESIRABLE TO CHANGE ANY TOLERANCE OR OTHER DETAIL SPECIFIED ON THIS DRAWING NOTIFY THE PURCHASER PROMPTLY.  
 MAXIMUM ALLOWABLE TOLERANCES HAVE BEEN DETERMINED AND DEVIATIONS WILL BE CAUSE FOR REJECTION. REMOVE ALL BURRS AND SHARP EDGES



| TMC P/N | ITEM #1 |
|---------|---------|
| A449    | A448    |
| A449-2  | A448-2  |

|   |   |             |                     |
|---|---|-------------|---------------------|
| 4 | 9 | SFB0256SN3  | SCREW, THD. CUTTING |
| 1 | 8 | NP 103-16   | NAMEPLATE           |
| 8 | 7 | LWS06MRN    | LOCKWASHER, SPLIT   |
| 8 | 6 | SCFP0632BNA | SCREW, MACHINE      |
| 2 | 5 | MS 102      | COVER, DUST         |
| 4 | 4 | NTH0832BN11 | NUT, HEX.           |
| 4 | 3 | LWS08MRN    | LOCKWASHER, SPLIT   |
| 4 | 2 | SCFP0832BNA | SCREW, MACHINE      |
| * | 1 | SEE CHART   | CABLE & COMP. ASSY. |

**NOTICE TO PERSONS RECEIVING THIS DRAWING**  
 THE TECHNICAL MATERIEL CORPORATION claims proprietary right in the material disclosed hereon. This drawing is issued in confidence for engineering information only and may not be reproduced or used to manufacture anything shown hereon without permission from THE TECHNICAL MATERIEL CORPORATION to the user. This drawing is loaned for mutual assistance and is subject to recall at any time.  
 Property of:  
 THE TECHNICAL MATERIEL CORPORATION  
 MAMARONECK, NEW JERSEY

| REQ. ITEM  | PART NO. | DESCRIPTION  | SYMBOL   |
|--|----------|--------------|----------|
| THE TECHNICAL MATERIEL CORP.<br>MAMARONECK, NEW YORK |          |              |          |
| FINAL ASSEMBLY                                       |          |              |          |
| SFP-2,3  |          |              |          |
| TYPE & TEMPER  |          | CDD, 4-10-53 | A. J. J. |
| HEAT TREAT. SPEC.                                    |          | M.H.S.       |          |
| FINISH & SPEC. NO.                                   |          |              |          |

|         |       |             |           |         |
|---------|-------|-------------|-----------|---------|
| A449-2  | SFP-3 |             |           | 3-8-67  |
| A449    | SFP-2 | 121         |           | A-20-53 |
| TMC P/N | MODEL | PROJECT NO. | ASSY. NO. | DATE    |

|            |                                       |                                |         |        |         |           |
|------------|---------------------------------------|--------------------------------|---------|--------|---------|-----------|
| B          | A449-2, A448-2 ADDED                  | 3-8-67                         | 17925   |        |         |           |
| A          | UPDATED HARDWARE<br>IT. 9 WAS SC110-1 | 7-27-64                        | 11916   | SRG    |         |           |
| ISSUE ITEM | CHANGED FROM                          | DATE                           | CN. NO. | DRAFTS | CHECKER | ENG. APP. |
| TOLERANCES |                                       |                                |         |        |         |           |
| ALL OTHERS | DEC. DIM. ±                           | DRILL, PUNCH, COMMERCIAL STOCK |         |        |         |           |
|            | FAC. DIM. ±                           | SIZES AND MANUFACTURERS        |         |        |         |           |
|            | ANGULAR DIM. ±                        | TOLERANCES ARE NOT INCLUDED.   |         |        |         |           |

A 449 B

A 449 B