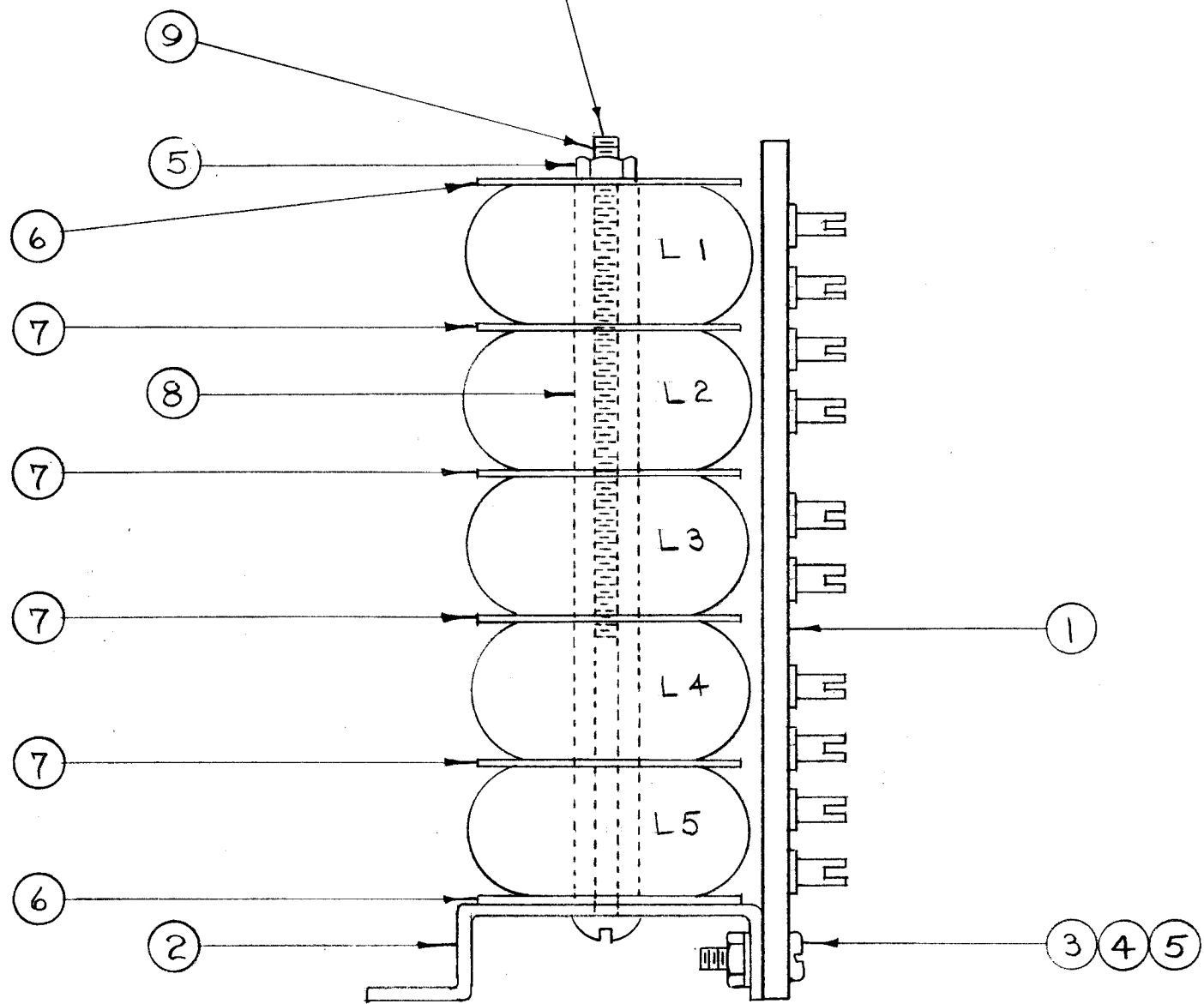


IF IT IS FOUND DESIRABLE TO CHANGE ANY TOLERANCE OR OTHER DETAIL SPECIFIED ON THIS DRAWING NOTIFY THE PURCHASER PROMPTLY.

MAXIMUM ALLOWABLE TOLERANCES HAVE BEEN DETERMINED AND DEVIATIONS WILL BE CAUSE FOR REJECTION. REMOVE ALL BURRS AND SHARP EDGES

CUT TO WITHIN $\frac{3}{16}$ OF NUT AFTER ASSEMBLY.

A-438



1	9	SC-114	SCREW, MACHINE	
X	8	PX-104-5-.234	INSULATION, SLEEVING.	
4	7	WA-110-2	WASHER, PAPER	
2	6	WA-110-1	WASHER, PAPER	
3	5	NTH0632BCB	NUT, HEX.	
2	4	LWS06MRC	LOCKWASHER, SPLIT	
2	3	SCBS0632BCG	SCREW, MACHINE	
1	2	MS-231	BRACKET, FILTER	
1	1	A-371	TERM. BD. ASSY., FILTER	

REQ.	ITEM	PART NO.	DESCRIPTION	SYMBOL
#			THE TECHNICAL MATERIEL CORP.	
STOCK SIZE			MAMARONECK. NEW YORK	
#		#	COIL AND TERMINAL BOARD	
MATERIAL		WEIGHT PER PC.	ASSEMBLY (FX-101)	
#		#	C.D.D. 3-30-53 A. J. J.	
TYPE & TEMPER			DRAWN	
#			ELEC. DES. APP.	
HEAT TREAT. SPEC.			MECH. DES. APP.	
#			Mottoso	
FINISH & SPEC. NO.			CHECKED	
			FINAL APPROVAL	
			A-438	

ISSUE	ITEM	CHANGED FROM	DATE	CN. NO.	DRAFTS	CHECKER	ENG. APP.	
TOLERANCES								
ALL OTHERS		DEC. DIM. \pm FRAC. DIM. \pm ANGULAR DIM. \pm	SCALE: #					DRILL, PUNCH, COMMERCIAL STOCK SIZES AND MANUFACTURERS TOLERANCES ARE NOT INCLUDED.

FX-101	121	A-440	4-3-53
MODEL	PROJECT NO.	ASS'Y. NO.	DATE
USED ON			