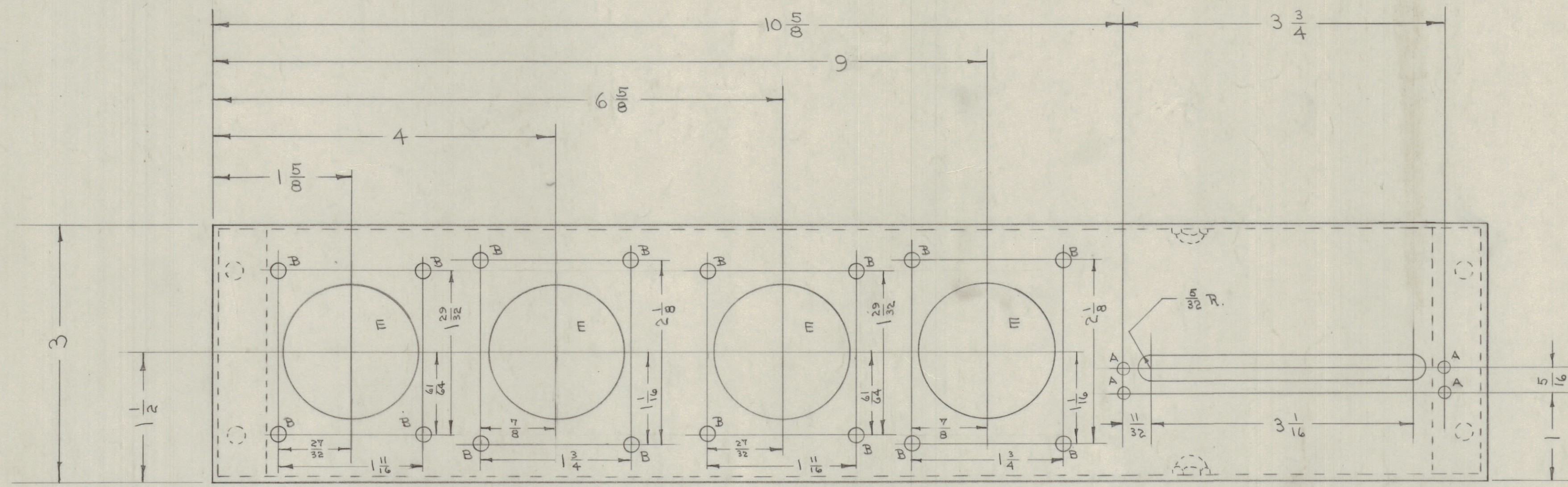
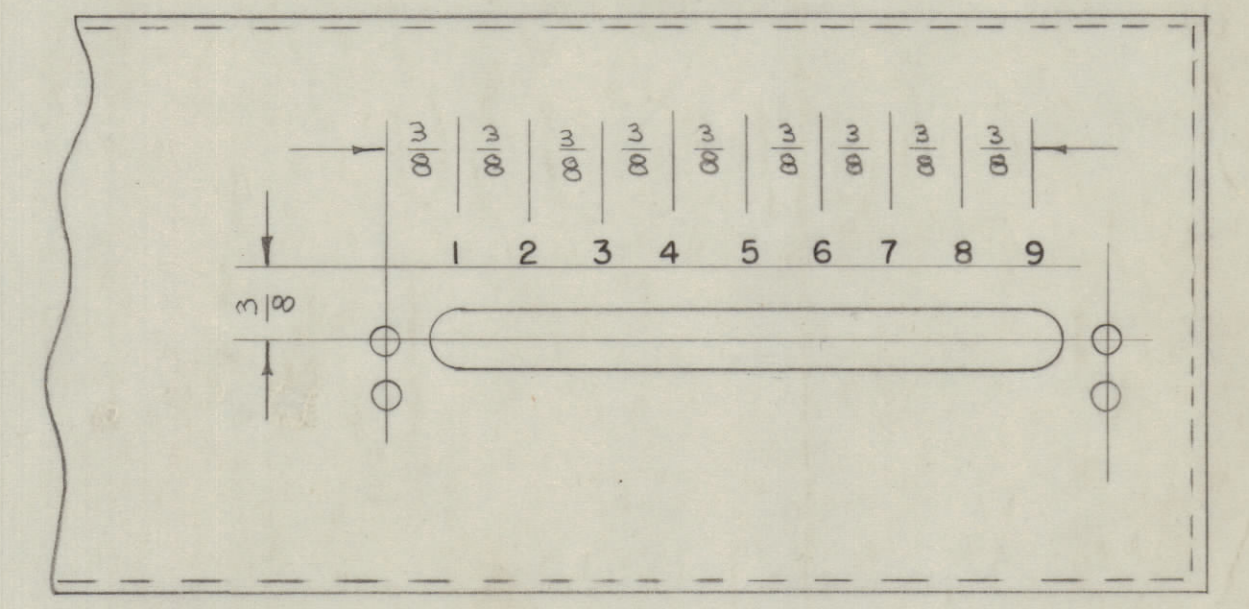


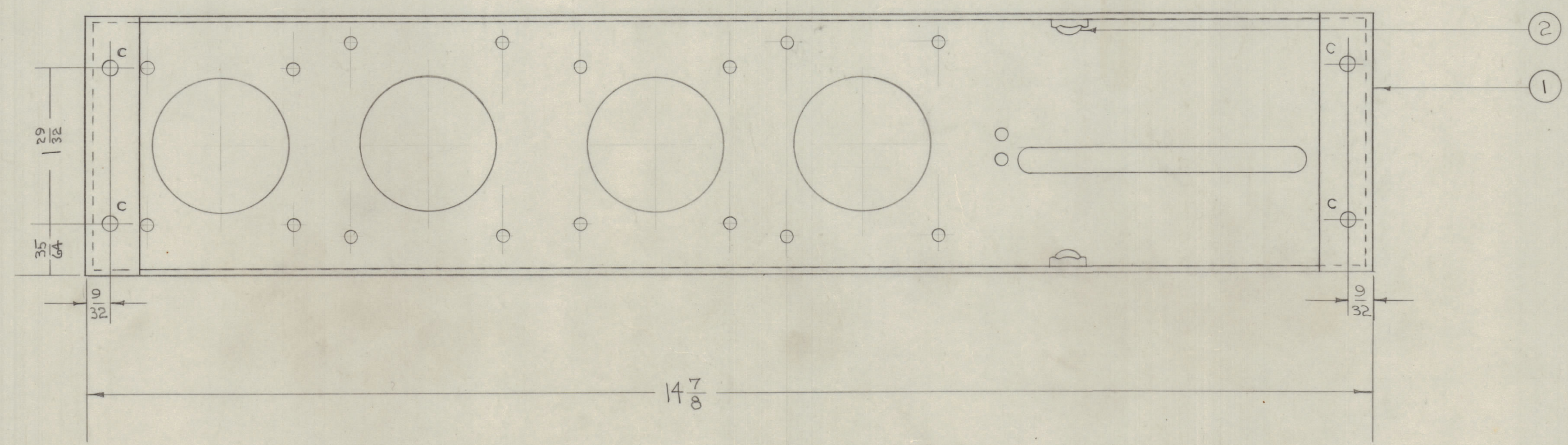
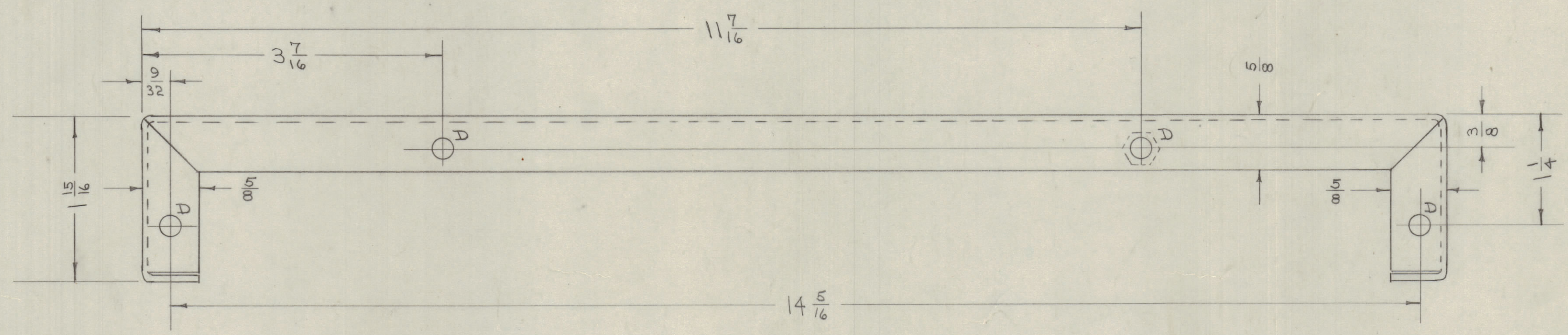
IF IT IS FOUND DESIRABLE TO CHANGE ANY TOLERANCE OR OTHER DETAIL SPECIFIED ON THIS DRAWING NOTIFY THE PURCHASER PROMPTLY.
 MAXIMUM ALLOWABLE TOLERANCES HAVE BEEN DETERMINED AND DEVIATIONS WILL BE CAUSE FOR REJECTION. REMOVE ALL BURRS AND SHARP EDGES



A- 5/32(.156)D. 4 HOLES REQ'D.
 B- 1/64(.112)D. 16 HOLES REQ'D.
 C- 13/64(.203)D. 4 HOLES REQ'D.
 D- 7/32(.218)D. 8 HOLES REQ'D.
 E- 1/2(1.500)D. 4 HOLES REQ'D.



STAMPING DETAIL
 LETTERS TO BE 1/8 HIGH BLACK GOTHIC



A-436 A

NOTICE TO PERSONS RECEIVING THIS DRAWING

THE TECHNICAL MATERIEL CORPORATION claims proprietary right in the material disclosed hereon. This drawing is issued in confidence for engineering information only and may not be reproduced or used to manufacture anything shown hereon without permission from THE TECHNICAL MATERIEL CORPORATION to the user. This drawing is loaned for mutual assistance and is subject to recall at any time.

Property of:
 THE TECHNICAL MATERIEL CORPORATION
 MAMARONECK, NEW YORK

ISSUE	ITEM	CHANGED FROM	DATE	CN. NO.	DRAFTS	CHECKER	ENG. APP.
A	1	5404 IRIDITE WAS 5181 CAUSTIC DIP	10/7/59	1001	A.B.		EMN
TOLERANCES							
ALL OTHERS		DEC. DIM. ± FRAC. DIM. ± ANGULAR DIM. ±	DRILL, PUNCH, COMMERCIAL STOCK SIZES AND MANUFACTURERS TOLERANCES ARE NOT INCLUDED.				

SFP-1	121	A-445	A-6-53
MODEL	PROJECT NO.	ASS'Y. NO.	DATE
USED ON			

8	2	SM-III-D306	NUTS, CINCH
1	1	MS-344	CHASSIS (NO DRAWING)
REQ. ITEM	PART NO.	DESCRIPTION	SYMBOL
.064		THE TECHNICAL MATERIEL CORP. MAMARONECK, NEW YORK	
ALUMINUM		CHASSIS ASSEMBLY.	
MATERIAL		WEIGHT PER PC.	
525 H32			
TYPE & TEMPER		E.S.D. 3-23-53 A.J.J.	
#		DRAWN	
HEAT TREAT. SPEC.		ELEC. DES. APP.	
5-404 IRIDITE		MECH. DES. APP.	
CHECKED		FINAL APPROVAL	
FINISH & SPEC. NO.		A-436 A	