

IF IT IS FOUND DESIRABLE TO CHANGE ANY TOLERANCE OR OTHER DETAIL SPECIFIED ON THIS DRAWING NOTIFY THE PURCHASER PROMPTLY.

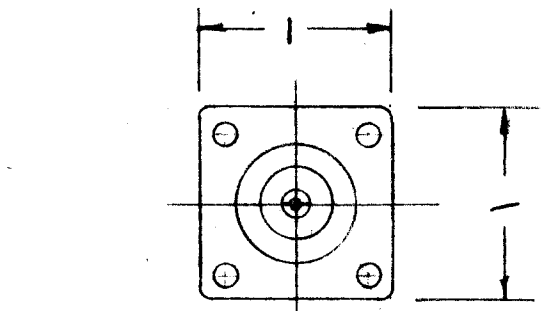
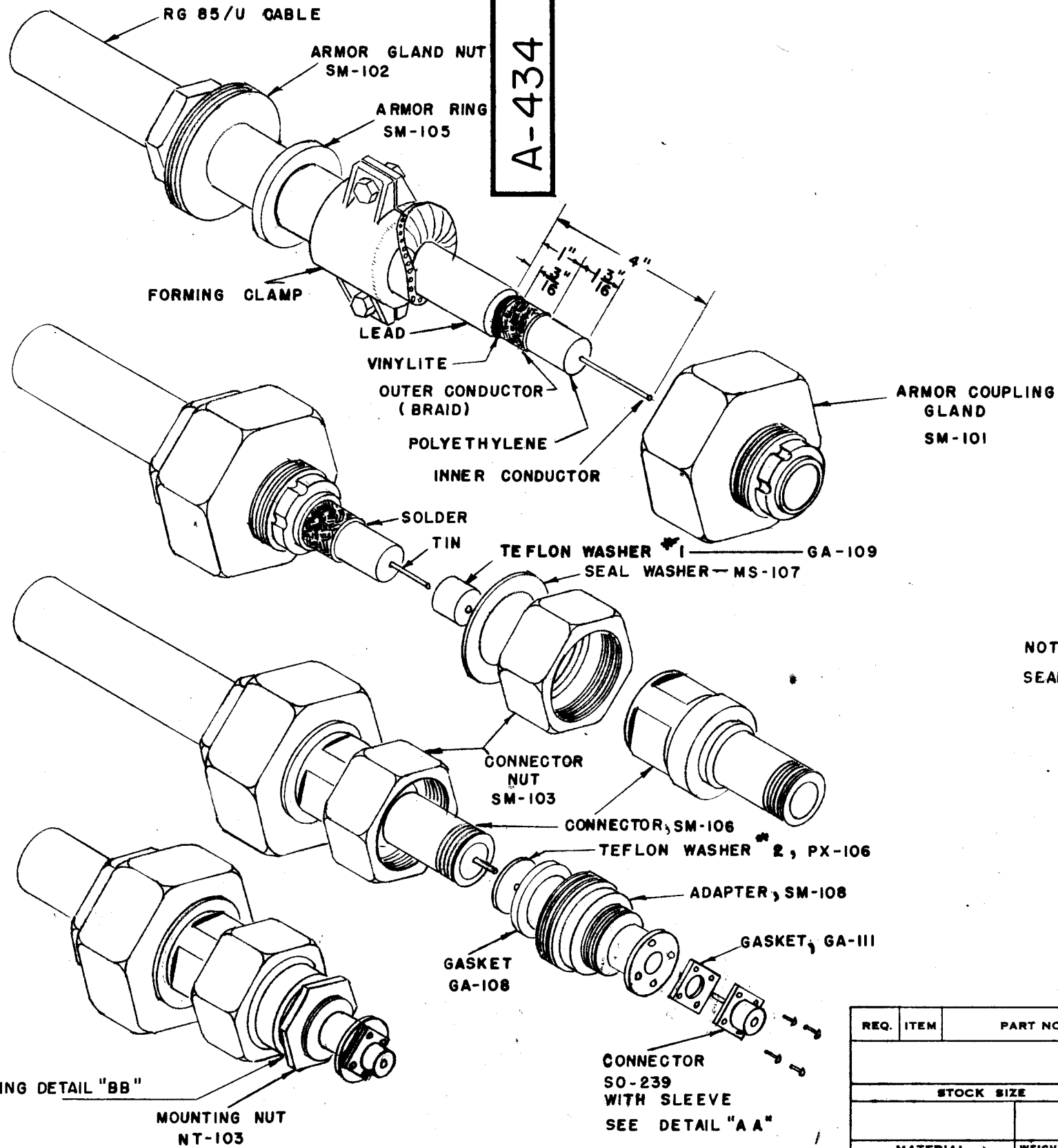
MAXIMUM ALLOWABLE TOLERANCES HAVE BEEN DETERMINED AND DEVIATIONS WILL BE CAUSE FOR REJECTION. REMOVE ALL BURRS AND SHARP EDGES

1. SQUARE OFF END OF RG 85/U CABLE AND SLIP ARMOR GLAND NUT AND ARMOR RING OVER CABLE, CUT OUTSIDE ARMOR TO LEAD SHEATH AND FLARE EVENLY, BEING CAREFUL THAT THE DIAMETER OF FLARE DOES NOT EXCEED  $2\frac{5}{8}$ ". GRIND OFF ROUGH SPOTS.

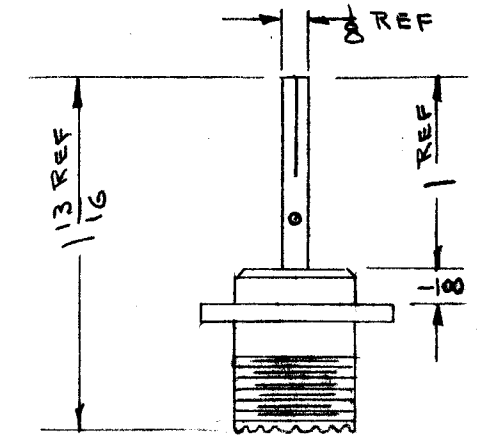
2. SLIP ON ARMOR COUPLING GLAND AND TIGHTEN ARMOR GLAND NUT. CUT LEAD SHEATH TO EXTEND  $\frac{1}{16}$ " LONGER THAN THE ARMOR COUPLING GLAND AND SOLDER. SKIN THE REMAINING LAYERS TO DIMENSIONS SHOWN AND SOLDER INTO PROVIDED SLOTS. ASSEMBLE PARTS IN ORDER INDICATED. TIN CENTER CONDUCTOR.

3. SLIP SLEEVE FIRMLY AGAINST TEFLON WASHER #2 AND SOLDER. CUT OFF CENTER CONDUCTOR FLUSH WITH TIP OF SLEEVE.

4. TIGHTEN ADAPTER WITH CONNECTOR NUT AND INSERT CONNECTOR SO-239.

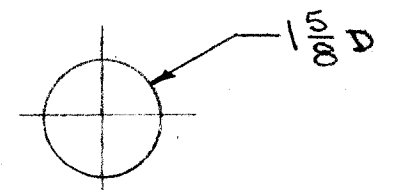


50



DETAIL "A A"

NOTE:  
SEAL ALL THREADS WITH GLYPTOL.



"B B" MOUNTING DETAIL

SEE MOUNTING DETAIL "BB"

CONNECTOR SO-239 WITH SLEEVE SEE DETAIL "A A"

C	1	TMC PART Nos Added	4-30-57	3	J.C.	JAD	
B	1	MTG. DETAIL ADDED	1/6/56	2	JAD	JAD	
A	1	Teflon Washer was necessary	8/2/54	1	JAD	JAD	
ISSUE	ITEM	CHANGED FROM	DATE	CN. NO.	DRAFTS	CHECKER	ENG. APP.

TOLERANCES		SCALE:	
ALL OTHERS	DEC. DIM. ± FRAC. DIM. ± ANGULAR DIM. ±	DRILL, PUNCH, COMMERCIAL STOCK SIZES AND MANUFACTURERS TOLERANCES ARE NOT INCLUDED.	

MODEL	PROJECT NO.	ASS'Y. NO.	DATE
USED ON			

REQ.	ITEM	PART NO.	DESCRIPTION	SYMBOL
			THE TECHNICAL MATERIEL CORP. MAMARONECK. NEW YORK	
STOCK SIZE			CONNECTOR - ADAPTER	
MATERIAL			TCA-85/12	
WEIGHT PER PC.				
TYPE & TEMPER			JAD 3-12-53	
HEAT TREAT. SPEC.			DRD 3-12-53	
FINISH & SPEC. NO.			CHECKED	FINAL APPROVAL
				A-434 B