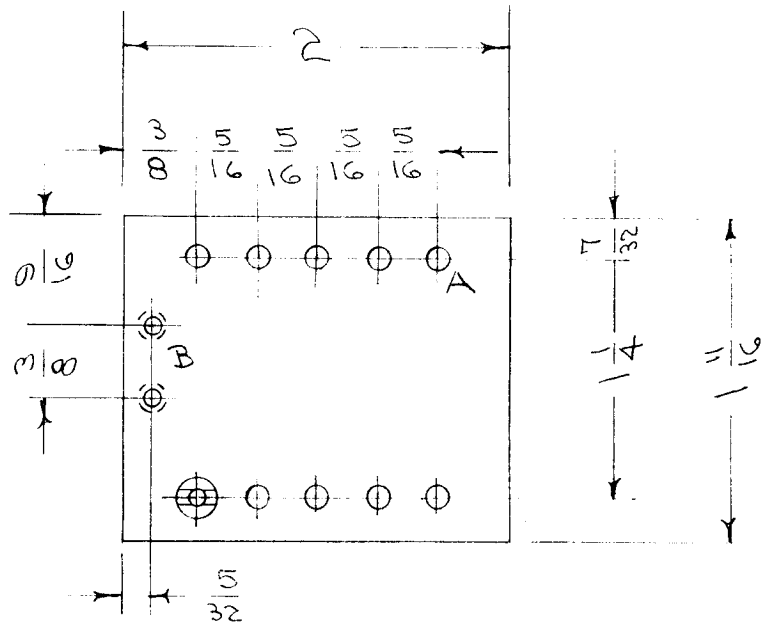


IF IT IS FOUND DESIRABLE TO CHANGE ANY TOLERANCE OR OTHER DETAIL SPECIFIED ON THIS DRAWING NOTIFY THE PURCHASER PROMPTLY.

A-400 A

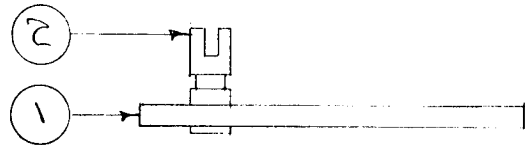
MAXIMUM ALLOWABLE TOLERANCES HAVE BEEN DETERMINED AND DEVIATIONS WILL BE CAUSE FOR REJECTION. REMOVE ALL BURRS AND SHARP EDGES

REQ. PER UNIT	USED ON			
	MODEL	PROJECT NO.	ASS'Y. NO.	DATE
1	CFA			8/30/55



A - 2.9 MM (.114) D. 10 HOLES REQ.
 B - DRILL & TAP 4-40 2 " "

NOTE POS. OF LUGS



REF: DWG. NO. CK-150

10	2	TE-109-3	LUG	
1	1	PX-151	TERM. BD. (NO DRAWING)	
REQ.	ITEM	PART NO.	DESCRIPTION	SYMBOL
1/8 THK.			THE TECHNICAL MATERIEL CORP.	
STOCK SIZE			MAMARONECK. NEW YORK	
PHENOLIC		#	NO. 2 TERM. BD. ASSY.	
MATERIAL		WEIGHT PER PC.	CFA	
XXXX LAMINATE			CDD 8/30/55	
TYPE & TEMPER			DRAWN	
			ELEC. DES. APP.	
			MECH. DES. APP.	
HEAT TREAT. SPEC.			CHECKED	
NATURAL			FINAL APPROVAL	
FINISH & SPEC. NO.			A-400 A	

#	#	REDRAWN	DATE	CN. NO.	DRAFTS	CHECKER	ENG. APP.

TOLERANCES	SCALE
ALL OTHERS DEC. DIM. ± FRAC. DIM. ± 1/64 ANGULAR DIM. ±	DRILL, PUNCH, COMMERCIAL STOCK SIZES AND MANUFACTURERS TOLERANCES ARE NOT INCLUDED.

IF IT IS FOUND DESIRABLE TO CHANGE ANY TOLERANCE OR OTHER DETAIL SPECIFIED ON THIS DRAWING NOTIFY THE PURCHASER PROMPTLY.

A-401 B

MAXIMUM ALLOWABLE TOLERANCES HAVE BEEN DETERMINED AND DEVIATIONS WILL BE CAUSE FOR REJECTION. REMOVE ALL BURRS AND SHARP EDGES

REQ. PER UNIT

USED ON

MODEL

PROJECT NO.

ASSY. NO.

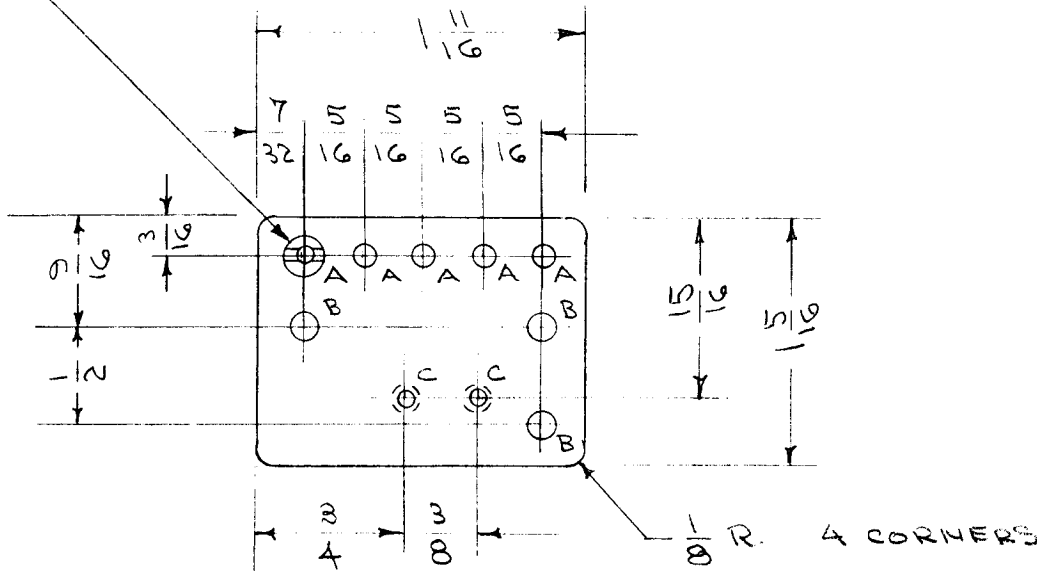
DATE

NOTE POSITION OF LUGS.

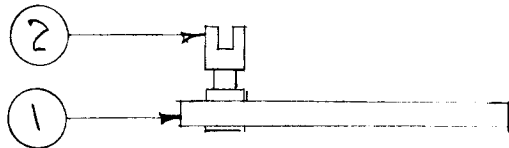
1

CFA

8-29-55



A - 2.9 M.M (.114) D 5 HOLES REQ.
 B - #30 (.128) D. 3 " "
 C - DRILL & TAP 4-40 2 " "



REF. DWG. CK-150

5	2	TE-109-3	LUG	
1	1	PX-152	TERM. BD. (NO DWG)	
REQ.	ITEM	PART NO.	DESCRIPTION	SYMBOL
1/8 THK.			THE TECHNICAL MATERIEL CORP.	
STOCK SIZE			MAMARONECK. NEW YORK	
PHENOLIC		#	TERM. BD. #1 ASSY	
MATERIAL		WEIGHT PER PC.	CFA.	
XXXXP LAMINATE			CDD. 8/29/55	
TYPE & TEMPER			WOL	
HEAT TREAT. SPEC.			A J J	
NATURAL			FINAL APPROVAL	
FINISH & SPEC. NO.			A-401 B	

#	#	REDRAWN	8/29/55	#	WOL	A J J	WOL
ISSUE	ITEM	CHANGED FROM	DATE	CN. NO.	DRAFTS	CHECKER	ENG. APP.

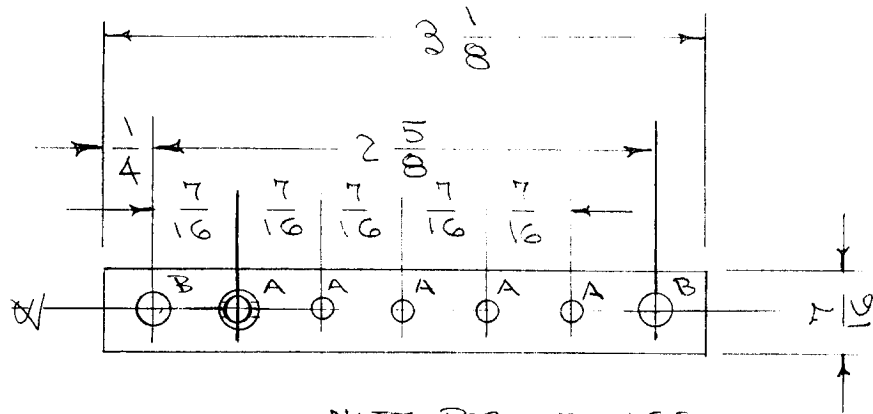
TOLERANCES		SCALE
ALL OTHERS	DEC. DIM. ± FRAC. DIM. ± 1/64 ANGULAR DIM. ±	DRILL, PUNCH, COMMERCIAL STOCK SIZES AND MANUFACTURERS TOLERANCES ARE NOT INCLUDED.

IF IT IS FOUND DESIRABLE TO CHANGE ANY TOLERANCE OR OTHER DETAIL SPECIFIED ON THIS DRAWING NOTIFY THE PURCHASER PROMPTLY.

A-402 C

MAXIMUM ALLOWABLE TOLERANCES HAVE BEEN DETERMINED AND DEVIATIONS WILL BE CAUSE FOR REJECTION. REMOVE ALL BURRS AND SHARP EDGES

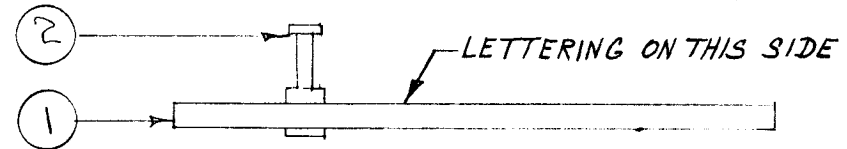
REQ. PER UNIT	USED ON			
	MODEL	PROJECT NO.	ASS'Y. NO.	DATE
2	CFA			8/29/55



A - 2.9 M.M (.114) D. 5 HOLES REQ.
 B - #21 (.159) D. 2 " "

TMC #	USE TMC LETTERING DWG.	TERM. BD.
A-402	LD-142-5	5

NOTE POS. OF LUGS



NOTE: TERM. BD. IS TO BE LETTERED BEFORE STAKING LUGS.

5	2	TE-105-A	LUG.	
1	1	PX-153	TERM. BD. (NO DWG)	
REQ.	ITEM	PART NO.	DESCRIPTION	SYMBOL
1/8 THK			THE TECHNICAL MATERIEL CORP.	
STOCK SIZE			MAMARONECK. NEW YORK	
PHENOLIC			TERM. BD. #5 ASSY.	
MATERIAL			CFA.	
WEIGHT PER PC.			XXXP LAMINATE	
TYPE & TEMPER			COD. 8-19-55	
HEAT TREAT. SPEC.			DRAWN	
FINISH & SPEC. NO.			ELEC. DES. APP.	
			MECH. DES. APP.	
			CHECKED	
			FINAL APPROVAL	
			A-402 C	

C	1	LETTERING DWG WAS LD-142	11-1-60	3334	MA		
B	1	LETTERING NOTE ADDED	10-13-60	3173	MA		
		REDRAWN	8/29/55		CS		
ISSUE	ITEM	CHANGED FROM	DATE	CN. NO.	DRAFTS	CHECKER	ENG. APP.

TOLERANCES		SCALE
ALL OTHERS	DEC. DIM. ± FRAC. DIM. ± 1/64 ANGULAR DIM. ±	DRAW, PUNCH, COMMERCIAL STOCK SIZES AND MANUFACTURERS TOLERANCES ARE NOT INCLUDED.

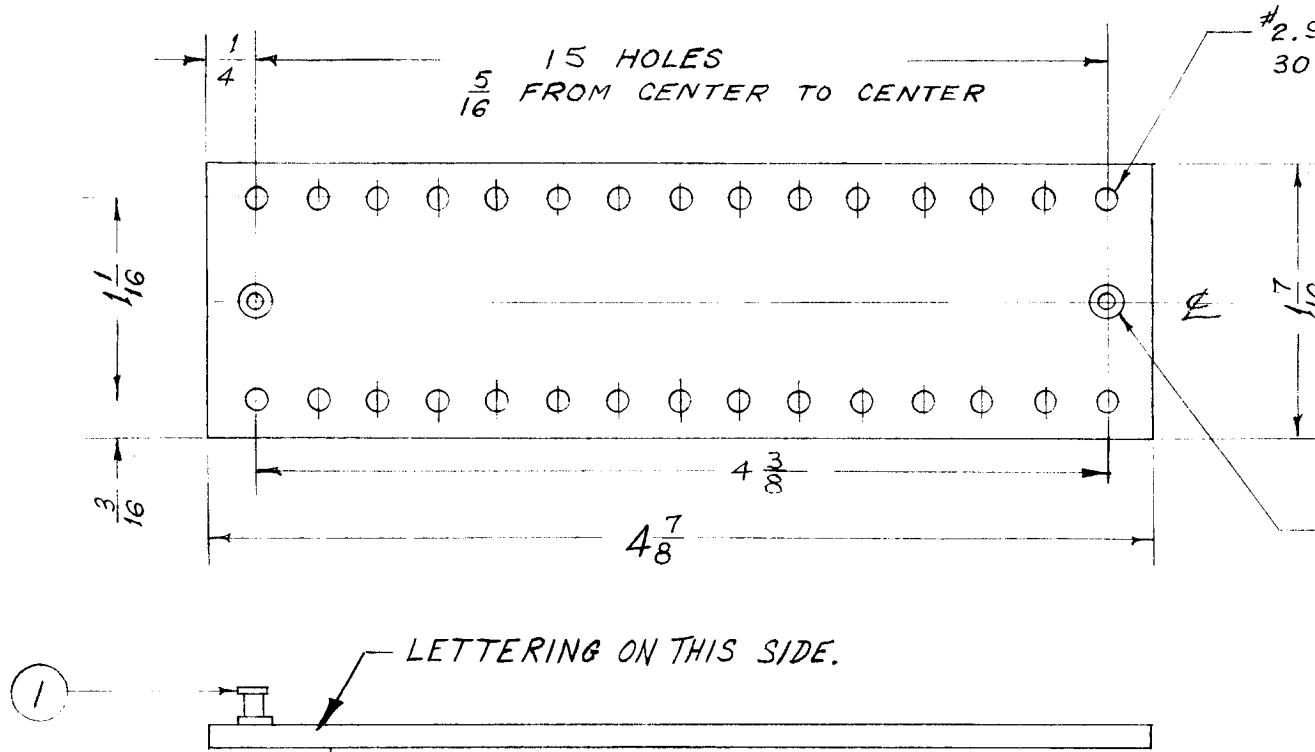
REQ. PER UNIT	USED ON			A-403	D
	MODEL	ASS'Y. NO.	DATE		
1	CFA		11-23-51		

TMC #	USE TMC LETTERING DWG.	TERM. BD.
A-403	LD-142-3	7

NOTE: TERM BD. LETTERED BEFORE STAKING LUGS.

REF: LD-142

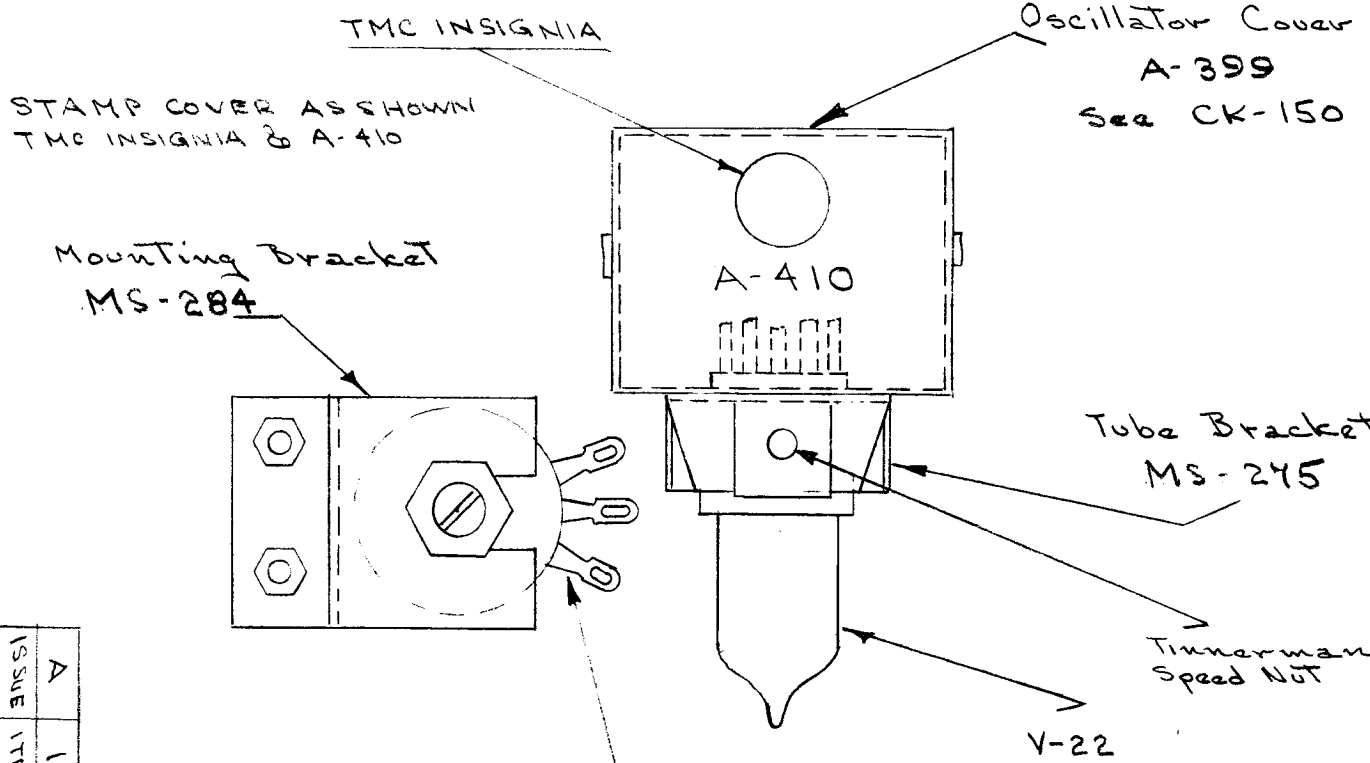
DRILL & C'SINK FOR 6-32 F.H. SCREW - 2 REQ.



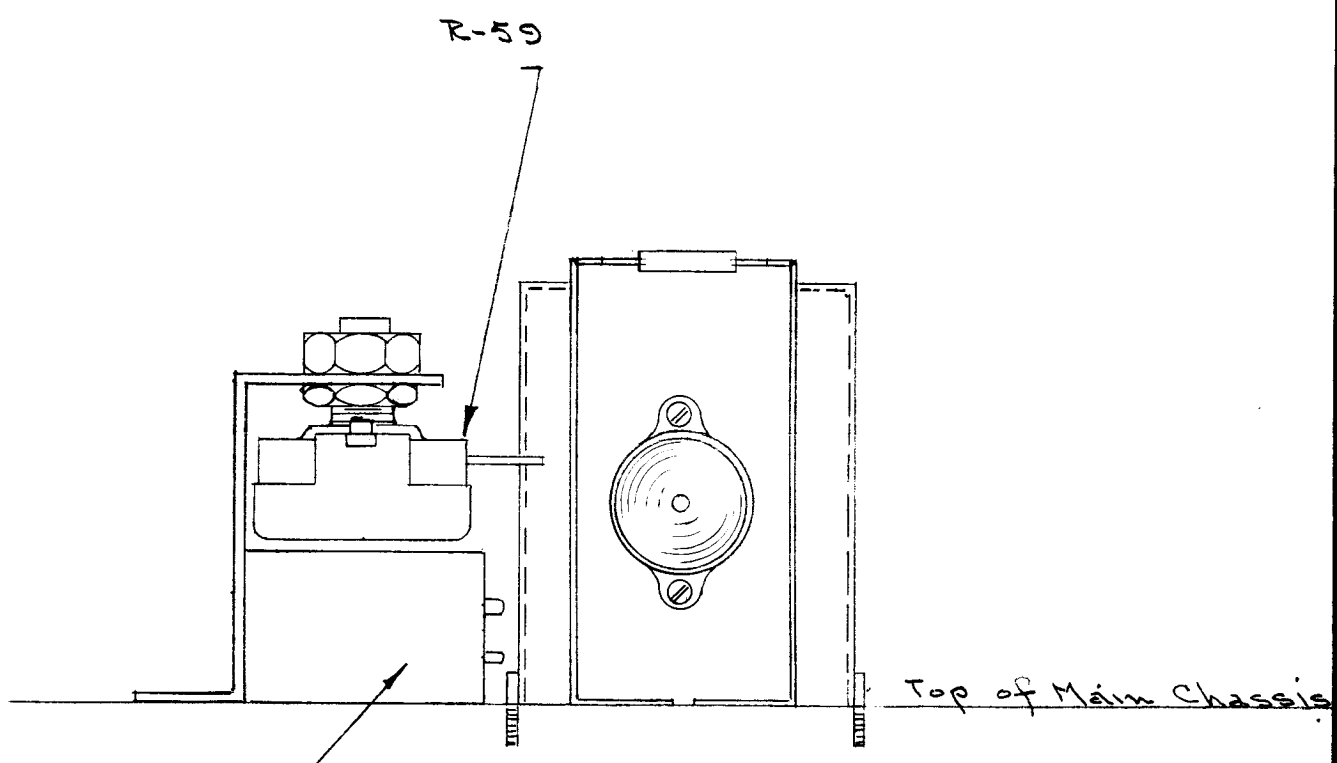
D	DELE. FX REF.	5/27/71	19232	GE	(6)	REQ.	30	1	TE-105-4	TERMINAL							
C	1 LETTERING DWG. WAS LD-142	11-1-60	333A	WJF		ITEM											
B	1 LETTERING NOTE ADDED	10-14-60	3173	WJF													
#	# REDRAWN NO CHANGE	9-8-55		WJF													
ISSUE	ITEM	CHANGED FROM	DATE	CH. NO.	DRAFTS	CHECKER	ENG. APP.	MATERIAL		DESCRIPTION							
TOLERANCES			SCALE:					XXXP LAMINATE		DRAWN		CHECKED					
DEC. DIM. ±			MAXIMUM ALLOWABLE TOLERANCES HAVE BEEN DETERMINED AND ANY DEVIATIONS WILL BE CAUSE FOR REJECTION. REMOVE ALL BURRS AND SHARP EDGES					TYPE & TEMPER		HEAT TREAT. SPEC.		DRAWN		CHECKED			
FRAC. DIM. ± 1/64								FINISH & SPEC. NO.		ELEC. DES. APP.		MECH. DES. APP.		FINAL APPR VAL			
ANGULAR DIM. ±														A-403		D	

A-410

TOP VIEW



ISSUE	A
ITEM	1
CHANGED FROM	STAMPING ADDED
DATE	2/15/54
CN. NO.	
DRAFT	C.O.D.
CHK.	<i>[Signature]</i>
APP.	<i>[Signature]</i>



L-6 SIDE VIEW

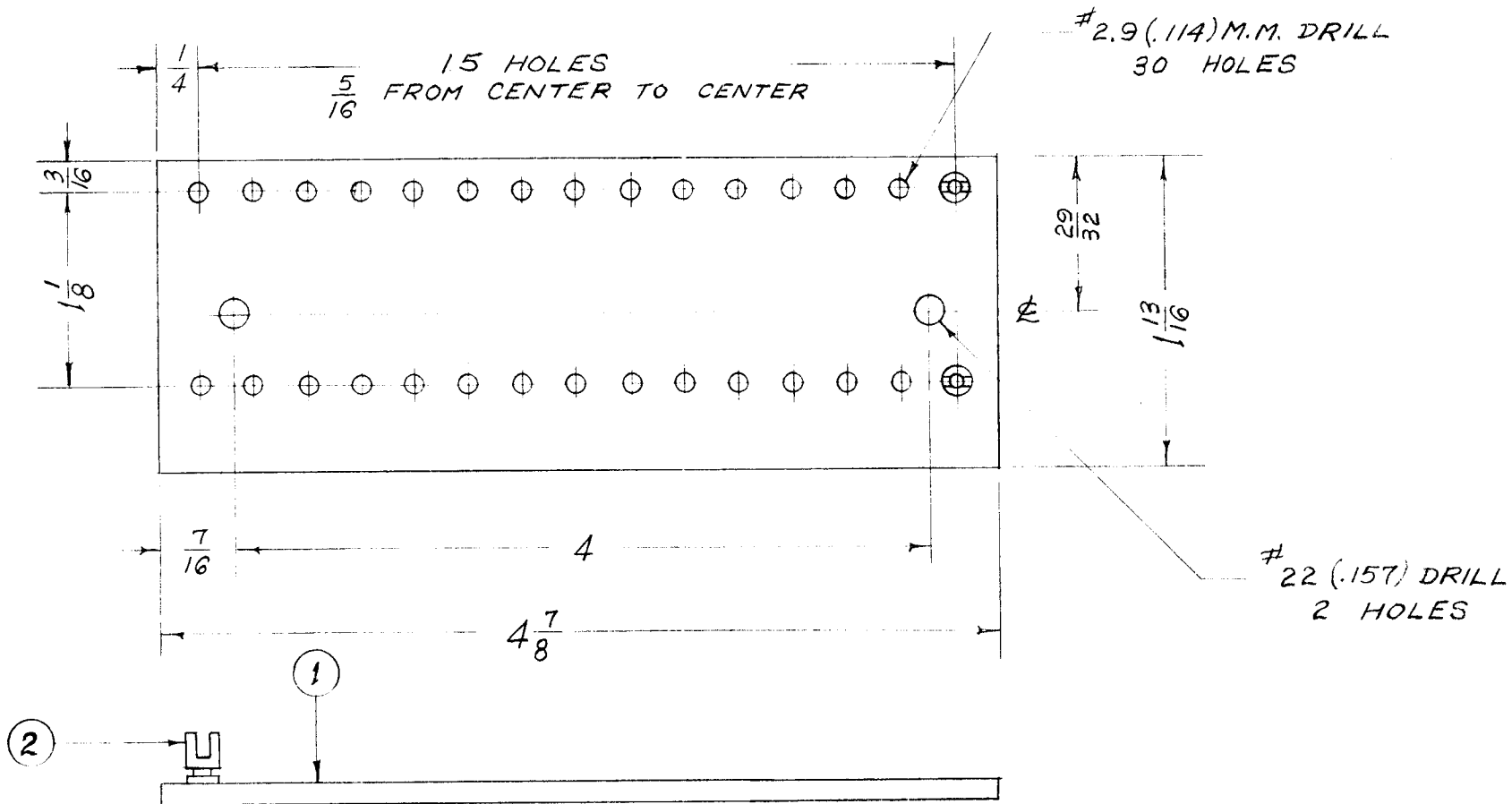
SUPERCEDES AMS255

DATE	12-17-51
DRN.	<i>JADe</i>
CHKD.	<i>[Signature]</i>
APPD.	<i>[Signature]</i>

SUB-ASSEMBLY,
OSCILLATOR
Model CFA

THE TECHNICAL MATERIEL
CORPORATION
MAMARONECK, NEW YORK

REQ. PER UNIT	USED ON			A-417	B
	MODEL	ASS'Y. NO.	DATE		
1	VOX	A-596	2-6-52		



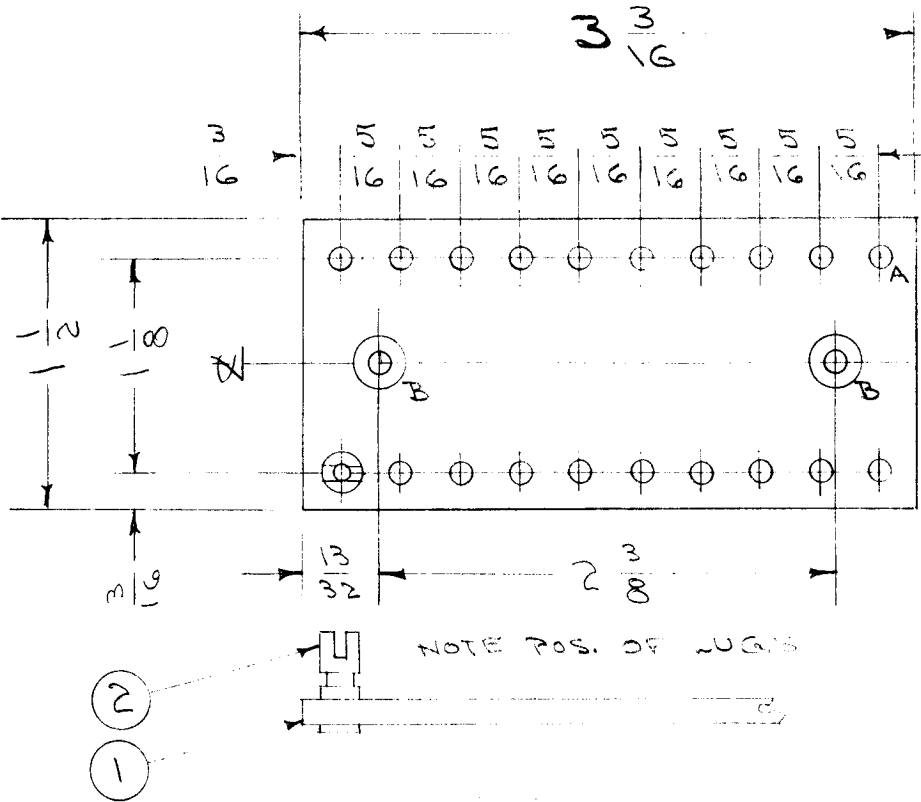
								30	2	TE-109-3	SPLIT TERMINAL LUG				
								1	1	PX-163	TERMINAL BOARD #2 (NO DWG)				
								REQ.	ITEM	PART NO.	DESCRIPTION	SYMBOL			
								1/8		THE TECHNICAL MATERIEL CORP. MAMARONECK, NEW YORK					
								STOCK SIZE		TERMINAL BOARD #2					
B	1	NO. 2.9 DRILL WAS #33 REDRAWN	8-9-55	2	RB			PHENOLIC		POWER SUPPLY					
								MATERIAL							
								XXXP LAMINATE		#	PB 9-9-55				
ISSUE			TOLERANCES				SCALE:			DRAWN					
										CHECKED					
										FINAL APPROVAL					
DEC. DIM. ±			MAXIMUM ALLOWABLE TOLERANCES HAVE BEEN DETERMINED AND ANY DEVIATIONS WILL BE CAUSE FOR REJECTION. REMOVE ALL BURRS AND SHARP EDGES				TYPE & TEMPER			HEAT TREAT. SPEC.					
FRAC. DIM. ±							FINISH & SPEC. NO.			ELEC. DES. APP.			MECH. DES. APP.		
ANGULAR DIM. ±															
										A-417					
										B					

IF IT IS FOUND DESIRABLE TO CHANGE ANY TOLERANCE OR OTHER DETAIL SPECIFIED ON THIS DRAWING NOTIFY THE PURCHASER PROMPTLY.

A-418 B

MAXIMUM ALLOWABLE TOLERANCES HAVE BEEN DETERMINED AND DEVIATIONS WILL BE CAUSE FOR REJECTION. REMOVE ALL BURRS AND SHARP EDGES

REQ. PER UNIT	USED ON			
	MODEL	PROJECT NO.	ASS'Y. NO.	DATE
1	VOX		A-595	8/30/55



A - 2.9 MM (.114) D 20 HOLES REQ.
 B - DRILL & C/SK FOR G-32 F.H.S.

NOTE:
 FOR LETTERING SEE LD-145.

20	2	TE-109-3	LUG	
1	1	PX-164	TERM. BD. (NO DRAWING)	
REQ.	ITEM	PART NO.	DESCRIPTION	SYMBOL
1/8 THICK.			THE TECHNICAL MATERIEL CORP.	
STOCK SIZE			MAMARONECK. NEW YORK	
PHENOLIC		#	TERM. BD. NO. 1 ASSY.	
MATERIAL		WEIGHT PER PC.	POWER SUPPLY VOX	
XXXXP LAMINATE			CDD 8/30/55	
TYPE & TEMPER			WOC	
HEAT TREAT. SPEC.			DRAWN	
SEE NOTE			ELEC. DES. APP.	
FINISH & SPEC. NO.			MECH. DES. APP.	
			CHECKED	
			FINAL APPROVAL	
			A-418 B	

#	#	REDRAWN	8/30/55	#	CDD	FAIR	WOC
ISSUE	ITEM	CHANGED FROM	DATE	CN. NO.	DRAFTS	CHECKER	ENG. APP.

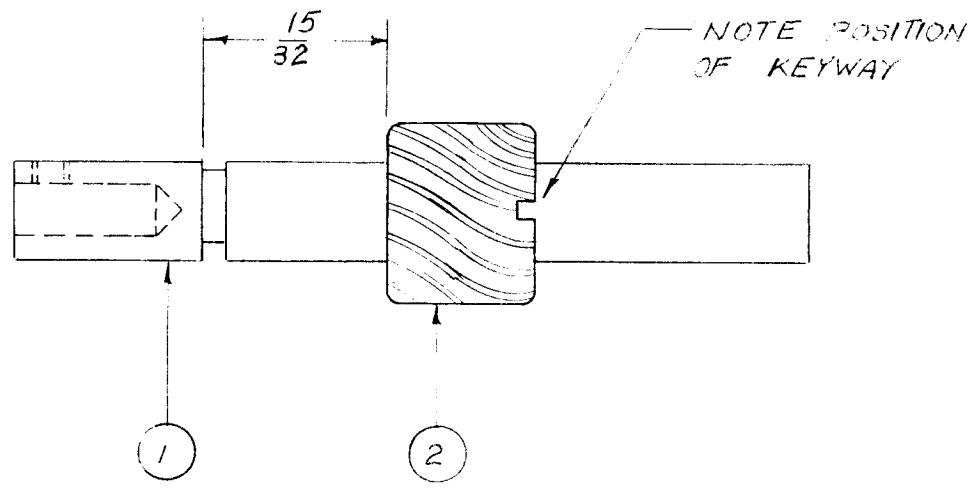
TOLERANCES		SCALE
ALL OTHERS	DEC. DIM. ± FRAC. DIM. ± 1/64 ANGULAR DIM. ±	DRILL, PUNCH, COMMERCIAL STOCK SIZES AND MANUFACTURERS TOLERANCES ARE NOT INCLUDED.

IF IT IS FOUND DESIRABLE TO CHANGE ANY TOLERANCE OR OTHER DETAIL SPECIFIED ON THIS DRAWING NOTIFY THE PURCHASER PROMPTLY.

A-419

MAXIMUM ALLOWABLE TOLERANCES HAVE BEEN DETERMINED AND DEVIATIONS WILL BE CAUSE FOR REJECTION. REMOVE ALL BURRS AND SHARP EDGES

REQ. PER UNIT	USED ON			
	MODEL	PROJECT NO.	ASS'Y. NO.	DATE
1	VOX		A-420	2-1-52



1	2	GR-107	GEAR	
1	1	PM-208	SHAFT, GEAR	
REQ.	ITEM	PART NO.	DESCRIPTION	SYMBOL
			THE TECHNICAL MATERIEL CORP.	
STOCK SIZE			MAMARONECK. NEW YORK	
			HELICAL GEAR SHAFT	
MATERIAL			SUB-ASS'Y.	
WEIGHT PER PC.				
TYPE & TEMPER			AK 8-31-55	WDC
			DRAWN	ELEC. DES. APP. MECH. DES. APP.
HEAT TREAT. SPEC.			WDC	WDC
FINISH & SPEC. NO.			A-419	

#	#	REDRAWN	NO CHANGE	DATE	#	NO	DATE	WDC
				8-31-55				
ISSUE	ITEM	CHANGED FROM		DATE	CN. NO.	DRAFTS	CHECKER	ENG. APP.

TOLERANCES		SCALE
ALL OTHERS	DEC. DIM. ± FRAC. DIM. ± ANGULAR DIM. ±	DRILL, PUNCH, COMMERCIAL STOCK SIZES AND MANUFACTURERS TOLERANCES ARE NOT INCLUDED.

IF IT IS FOUND DESIRABLE TO CHANGE ANY TOLERANCE OR OTHER DETAIL SPECIFIED ON THIS DRAWING NOTIFY THE PURCHASER PROMPTLY.

A-420

A

MAXIMUM ALLOWABLE TOLERANCES HAVE BEEN DETERMINED AND DEVIATIONS WILL BE CAUSE FOR REJECTION. REMOVE ALL BURRS AND SHARP EDGES

REQ. PER UNIT

USED ON

MODEL

PROJECT NO.

ASS'Y. NO.

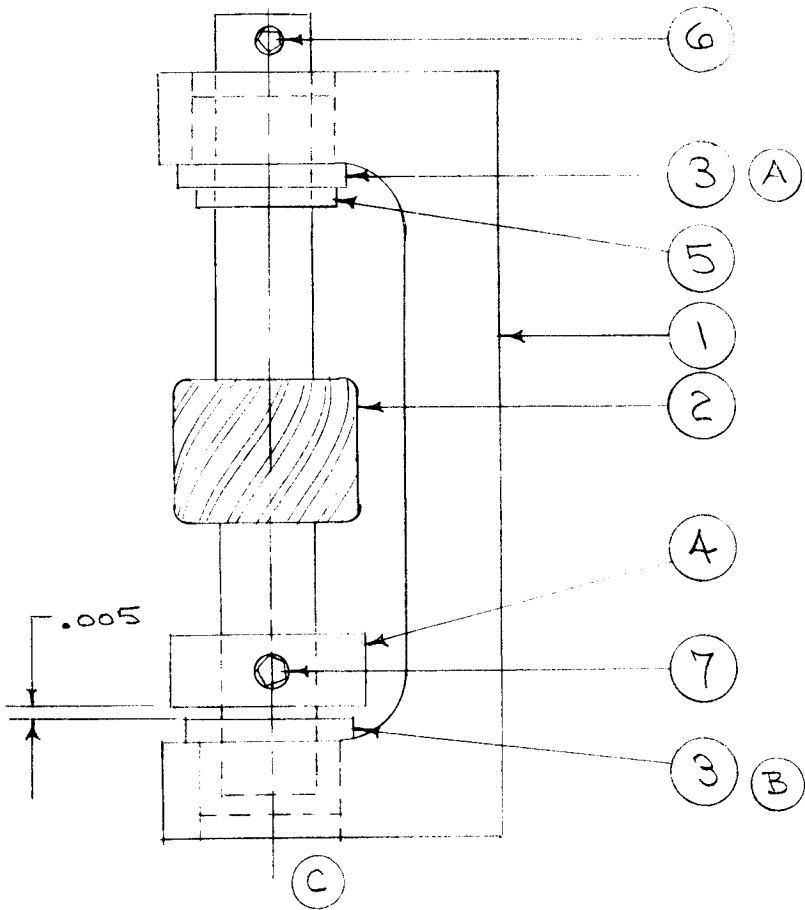
DATE

1

VOX

A-424

8/29/55



ASSEMBLY PROCEDURE -
 1- PRESS BEARING (A) INTO ITEM 1.
 2- SLIP ITEM 2 INTO END (C), THEN INTO BEARING (A).
 3- SLIP ITEM 4 & BEARING (B) ONTO SHAFT
 4 PRESS BEARING (B) INTO HOLE (C).
 5- PUT ON ITEM 5.
 6- LOCK ITEM 7 IN PLACE AS SHOWN

1	7	SC-115-2	SCREW, HEADLESS SET
1	6	SC-115-1	" " " "
1	5	WA-112	RING, RETAINING
1	4	PM-210	SHAFT LOCK, GEAR
2	3	BB-108	BEARING, OILITE
1	2	A-419	HEL. GEAR/SHAFT SUB ASSY.
1	1	PM-209	MOUNT, HELICAL GEAR

REQ.	ITEM	PART NO.	DESCRIPTION	SYMBOL
THE TECHNICAL MATERIEL CORP.				
MAMARONECK. NEW YORK				
STOCK SIZE			HELICAL GEAR SHAFT	
MATERIAL			ASSEMBLY	
WEIGHT PER PC.			VOX	
TYPE & TEMPER			CDD. 8/29/55	
HEAT TREAT. SPEC.			DRAWN	
FINISH & SPEC. NO.			ELEC. DES. APP.	
			MECH. DES. APP.	
			CHECKED	
			FINAL APPROVAL	
			A-420	
			A	

#	#	REDRAWN	8/29/55	#	COO	ANDERSON	WILSON
ISSUE	ITEM	CHANGED FROM	DATE	CN. NO.	DRAFTS	CHECKER	ENG. APP.

TOLERANCES		SCALE
ALL OTHERS	DEC. DIM. ± FRAC. DIM. ± ANGULAR DIM. ±	DRILL, PUNCH, COMMERCIAL STOCK SIZES AND MANUFACTURERS TOLERANCES ARE NOT INCLUDED.

IF IT IS FOUND DESIRABLE TO CHANGE ANY TOLERANCE OR OTHER DETAIL SPECIFIED ON THIS DRAWING NOTIFY THE PURCHASER PROMPTLY.

A-421

C

MAXIMUM ALLOWABLE TOLERANCES HAVE BEEN DETERMINED AND DEVIATIONS WILL BE CAUSE FOR REJECTION. REMOVE ALL BURRS AND SHARP EDGES

REQ. PER UNIT

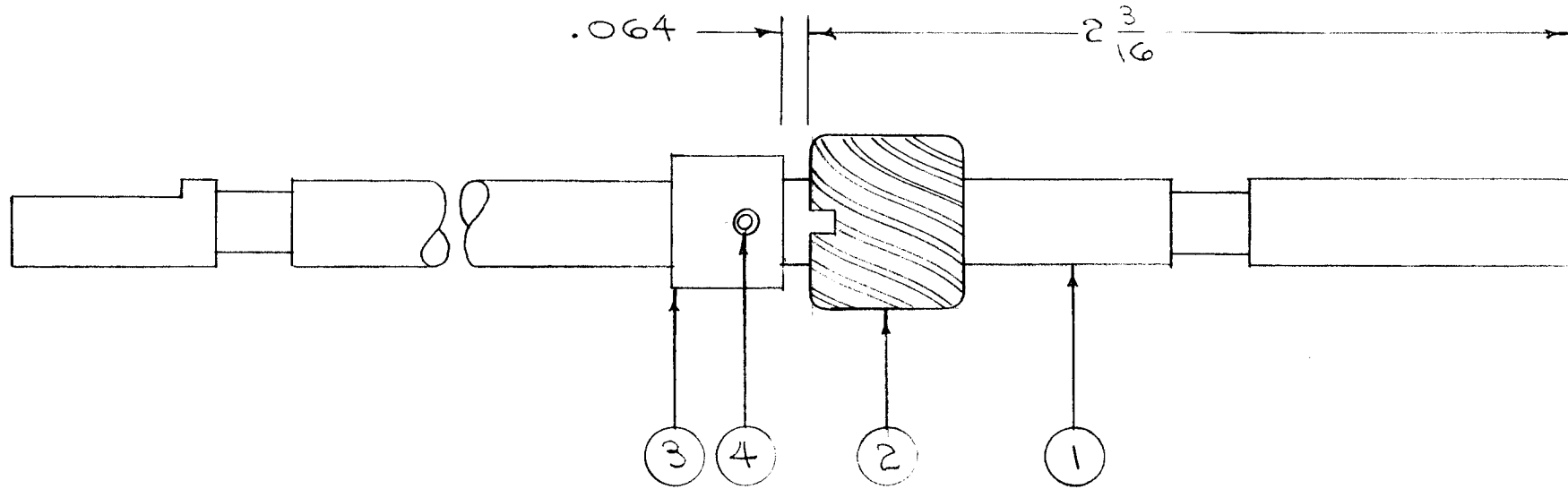
USED ON

MODEL

PROJECT NO.

ASS'Y. NO.

DATE



ITEM 2 IS PRESS FIT.

ITEM 3 PINNED ON AS SHOWN USING NO. 52 (.063) DRILL.

CAUTION -

DO NOT BEND SHAFT DURING INSTALLATION OF PIN.

1	4	PN-109-1	PIN, ROLL	
1	3	PM-116	BUSHING	
1	2	GR-107	GEAR	
1	1	PM-202	DIAL SHAFT	

REQ.	ITEM	PART NO.	DESCRIPTION	SYMBOL
------	------	----------	-------------	--------

THE TECHNICAL MATERIEL CORP.
MAMARONECK, NEW YORK

DIAL SHAFT ASSEMBLY

MATERIAL WEIGHT PER PC.

STOCK SIZE

TYPE & TEMPER

HEAT TREAT. SPEC.

FINISH & SPEC. NO.

CDD 12/28/54

DRAWN

ELEC. DES. APP.

MECH. DES. APP.

CHECKED

FINAL APPROVAL

A-421

C

ISSUE	ITEM	CHANGED FROM	DATE	CN. NO.	DRAFTS	CHECKER	ENG. APP.
-------	------	--------------	------	---------	--------	---------	-----------

TOLERANCES		SCALE
ALL OTHERS	DEC. DIM. ± .005 FRAC. DIM. ± ANGULAR DIM. ±	DRILL, PUNCH, COMMERCIAL STOCK SIZES AND MANUFACTURERS TOLERANCES ARE NOT INCLUDED.

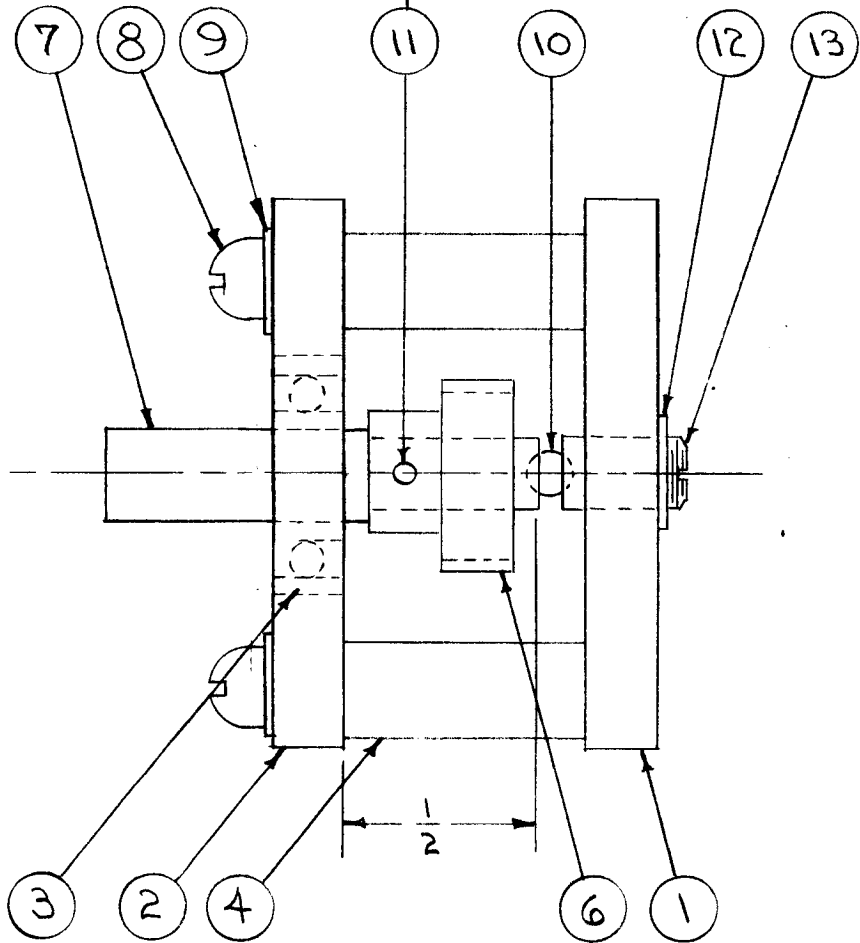
IF IT IS FOUND DESIRABLE TO CHANGE ANY TOLERANCE OR OTHER DETAIL SPECIFIED ON THIS DRAWING NOTIFY THE PURCHASER PROMPTLY.

A-422 E

MAXIMUM ALLOWABLE TOLERANCES HAVE BEEN DETERMINED AND DEVIATIONS WILL BE CAUSE FOR REJECTION. REMOVE ALL BURRS AND SHARP EDGES

REQ. PER UNIT	USED ON			
	MODEL	PROJECT NO.	ASS'Y. NO.	DATE
1	A-1000		A-1000	11-23-54

DRILL THRU. NO. 52 (.063) D. DRILL



1	13	SC-124	SCREW, SET	12-32
1	12	NT-109	NUT, LOCKING	
1	11	PN-109-1	PIN, ROLL	
1	10	BB-103-1	BALL BEARING	
3	9	LWE06MRN	WASHER, LOCK	
3	8	SCR0632BNIG	SCREW, MACHINE	
1	7	PM-215	SHAFT, PINION	
1	6	GR-109	GEAR, PINION	
—	5	—	—	—
3	4	TE-140	SPACER	
1	3	BB-120-1	BEARING	
1	2	MS-308	BEARING MOUNT	
1	1	MS-307	BASE PINION MOUNT	

REQ.	ITEM	PART NO.	DESCRIPTION	SYMBOL
		#	THE TECHNICAL MATERIEL CORP.	
		STOCK SIZE	MAMARONECK. NEW YORK	
		#	PINION GEAR ASSEMBLY	
		MATERIAL	WEIGHT PER PC.	
		TYPE & TEMPER	CDD. 11-23-54	
		HEAT TREAT. SPEC.	DRAWN	ELEC. DES. APP. MECH. DES. APP.
		FINISH & SPEC. NO.	CHECKED	FINAL APPROVAL

E	1	ITEMS 5 & 14 DELETED	4/30/64	11294	AM.	@	
D	2	ITEM (3) WAS BB-103 HOWR UPDATED & STANDARDIZED	2-20-63	931C			
C	1	ITEMS 5 & 14 ADDED	7/21/54	3	CDD		
ISSUE	ITEM	CHANGED FROM	DATE	CN. NO.	DRAFTS	CHECKER	ENG. APP.

TOLERANCES		SCALE
ALL	DEC. DIM. ±	DRILL, PUNCH, COMMERCIAL STOCK SIZES AND MANUFACTURERS TOLERANCES ARE NOT INCLUDED.
THESE	FRAC. DIM. ±	
	ANGULAR DIM. ±	

IF IT IS FOUND DESIRABLE TO CHANGE ANY TOLERANCE OR OTHER DETAIL SPECIFIED ON THIS DRAWING NOTIFY THE PURCHASER PROMPTLY.

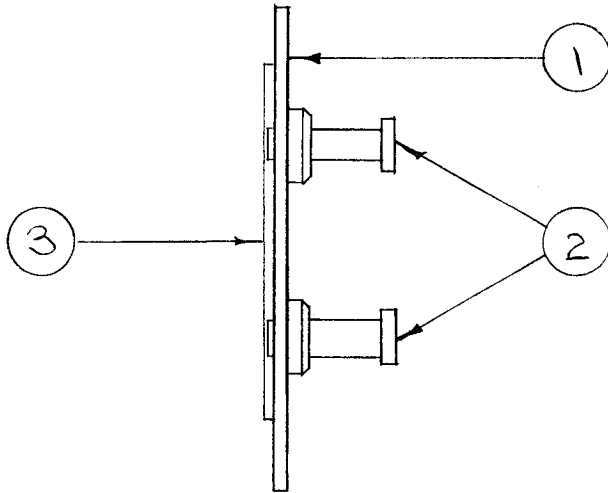
A-450 A

MAXIMUM ALLOWABLE TOLERANCES HAVE BEEN DETERMINED AND DEVIATIONS WILL BE CAUSE FOR REJECTION. REMOVE ALL BURRS AND SHARP EDGES

USED ON

MODEL	PROJECT NO.	ASS'Y. NO.	DATE
-------	-------------	------------	------

SFP-2



1"	3	TA-102-2	TAPE, PAPER	
2	2	TE-127-1	TERMINAL, MIDGET	
1	1	TM-109-1	TERMINAL STRIP, TOROID	
REQ.	ITEM	PART NO.	DESCRIPTION	SYMBOL
#			THE TECHNICAL MATERIEL CORP. MAMARONECK, NEW YORK	
STOCK SIZE				
#		#	TERMINAL STRIP ASSY.	
MATERIAL		WEIGHT PER PC.	TOROID	
#			C.D.D. 4-22-53	
TYPE & TEMPER			DRAWN	ELEC. DES. APP. MECH. DES. APP.
#			M.H.S.	
HEAT TREAT. SPEC.			CHECKED	FINAL APPROVAL
#			A-450 A	
FINISH & SPEC. NO.				

A	1	ITEM 3 ADDED	A/30/53	1	C.D.D.	M.H.S.	09/18
ISSUE	ITEM	CHANGED FROM	DATE	CN. NO.	DRAFTS	CHECKER	ENG. APP.

TOLERANCES		SCALE	#
ALL OTHERS	DEC. DIM. ± FRAC. DIM. ± ANGULAR DIM. ±	DRILL, PUNCH, COMMERCIAL STOCK SIZES AND MANUFACTURERS TOLERANCES ARE NOT INCLUDED.	

IF IT IS FOUND DESIRABLE TO CHANGE ANY TOLERANCE OR OTHER DETAIL SPECIFIED ON THIS DRAWING NOTIFY THE PURCHASER PROMPTLY.

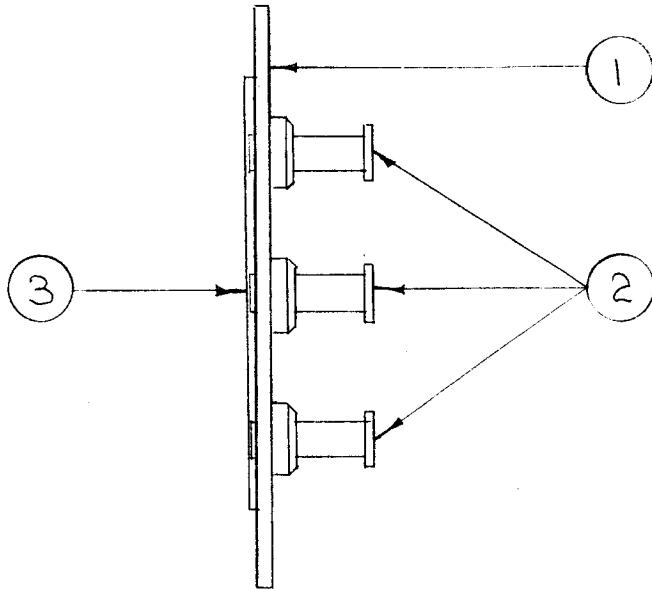
MAXIMUM ALLOWABLE TOLERANCES HAVE BEEN DETERMINED AND DEVIATIONS WILL BE CAUSE FOR REJECTION. REMOVE ALL BURRS AND SHARP EDGES

A-451

A

USED ON

MODEL	PROJECT NO.	ASS'Y. NO.	DATE
SFP-2			



1/2"	3	TA-102-2	TAPE, PAPER	
3	2	TE-127-1	TERMINAL, MIDGET	
1	1	TM-109-2	TERMINAL STRIP, TOROID	
REQ.	ITEM	PART NO.	DESCRIPTION	SYMBOL
STOCK SIZE			THE TECHNICAL MATERIEL CORP. MAMARONECK, NEW YORK	
MATERIAL				
WEIGHT PER PC.			TERMINAL STRIP ASSY.	
			TOROID	
TYPE & TEMPER			C.D.D. 4-22-53	
HEAT TREAT. SPEC.			DRAWN	ELEC. DES. APP.
FINISH & SPEC. NO.			MECH. DES. APP.	
			CHECKED	FINAL APPROVAL
			A-451 A	

A	1	ITEM 3 ADDED	4/30/53	1	C.D.D.	M.H.S.	[Signature]
ISSUE	ITEM	CHANGED FROM	DATE	CN. NO.	DRAFTS	CHECKER	ENG. APP.
TOLERANCES			SCALE				
ALL OTHERS	DEC. DIM. ± FRAC. DIM. ± ANGULAR DIM. ±		DRILL, PUNCH, COMMERCIAL STOCK SIZES AND MANUFACTURERS TOLERANCES ARE NOT INCLUDED.				

IF IT IS FOUND DESIRABLE TO CHANGE ANY TOLERANCE OR OTHER DETAIL SPECIFIED ON THIS DRAWING NOTIFY THE PURCHASER PROMPTLY.

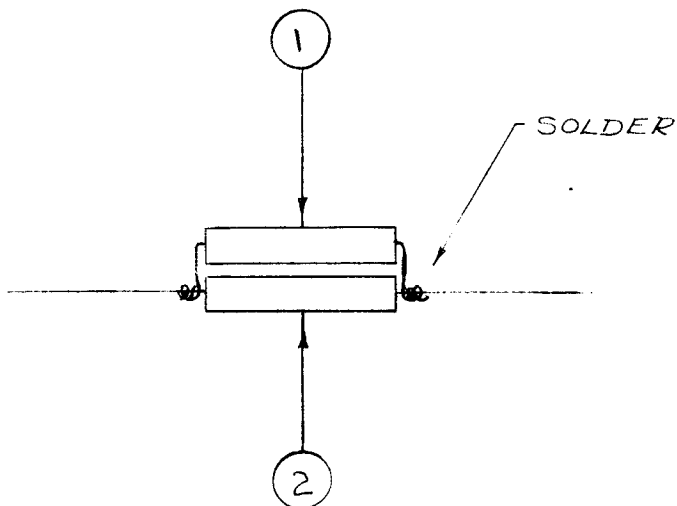
A-452

B

MAXIMUM ALLOWABLE TOLERANCES HAVE BEEN DETERMINED AND DEVIATIONS WILL BE CAUSE FOR REJECTION. REMOVE ALL BURRS AND SHARP EDGES

USED ON

MODEL	PROJECT NO.	ASS'Y. NO.	DATE
VOX	101	A-595	4-27-52



X	3	BS-100	SOLDER, SOFT	
1	2	CM20A102J	CAPACITOR, FIXED	
1	1	CM20A501J	CAPACITOR, FIXED	
REQ.	ITEM	PART NO.	DESCRIPTION	SYMBOL
//			THE TECHNICAL MATERIEL CORP.	
STOCK SIZE			MAMARONECK, NEW YORK	
//			CAPACITOR NETWORK, FIXED	
MATERIAL			1500 μ f. \pm 5%	
WEIGHT PER PC.			C.D.D. 4-27-53	
TYPE & TEMPER			A J J	
HEAT TREAT. SPEC.			DRAWN	
FINISH & SPEC. NO.			ELEC. DES. APP.	
			MECH. DES. APP.	
			CHECKED	
			FINAL APPROVAL	
			A-452	
			B	

B	1	ITEM 3 ADDED	11-30-52	2	P.B.	FAIR	W.D.
A	1	ITEM 2 WAS CM20A501J	11/30/53	1	FAIR	C.D.D.	W.D.
ISSUE	ITEM	CHANGED FROM	DATE	CN. NO.	DRAFTS	CHECKER	ENG. APP.

TOLERANCES		SCALE
ALL OTHERS	DEC. DIM. \pm FRAC. DIM. \pm ANGULAR DIM. \pm	DRILL, PUNCH, COMMERCIAL STOCK SIZES AND MANUFACTURERS TOLERANCES ARE NOT INCLUDED.

IF IT IS FOUND DESIRABLE TO CHANGE ANY TOLERANCE OR OTHER DETAIL SPECIFIED ON THIS DRAWING NOTIFY THE PURCHASER PROMPTLY.

A-489

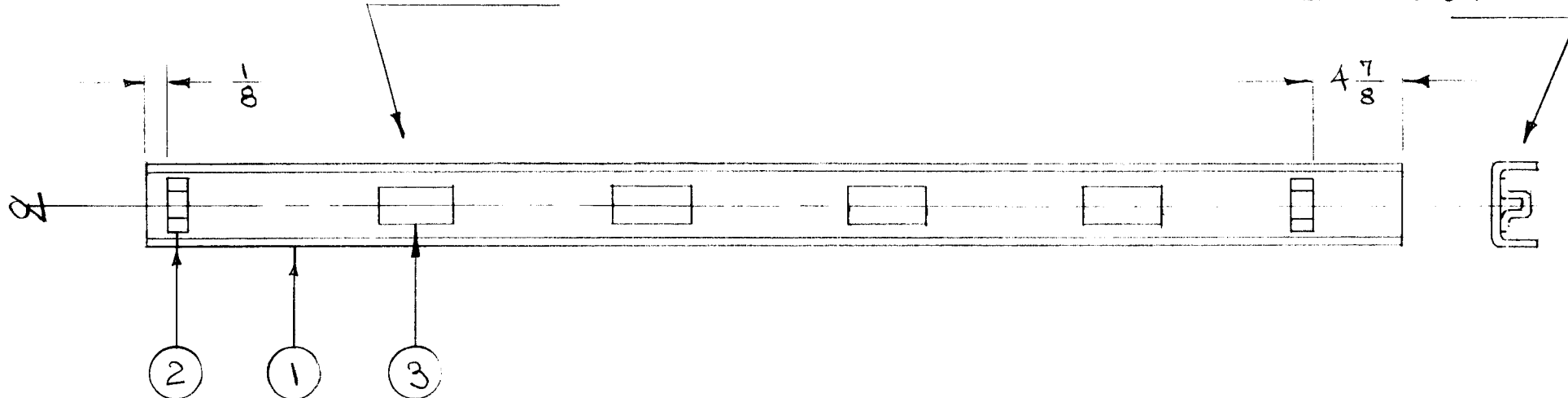
MAXIMUM ALLOWABLE TOLERANCES HAVE BEEN DETERMINED AND DEVIATIONS WILL BE CAUSE FOR REJECTION. REMOVE ALL BURRS AND SHARP EDGES

USED ON

MODEL	PROJECT NO.	ASS'Y. NO.	DATE
DDR-2			7-8-53

CEMENT ITEM 3 TO ITEM 1. SPACE EVENLY OVER LENGTH OF STRIP

WELD ITEM 2 AS SHOWN



4	3	RY-106	STOP, RUBBER	
2	2	MS-376	BRACKET	
1	1	FP-119	TRIM STRIP	
REQ.	ITEM	PART NO.	DESCRIPTION	SYMBOL
//			THE TECHNICAL MATERIEL CORP. MAMARONECK. NEW YORK	
STOCK SIZE				
//		//	TRIM STRIP	
MATERIAL		WEIGHT PER PC.	ASSEMBLY	
//		C.D.D. 7/8/53		
TYPE & TEMPER			DRAWN	MECH. DES. APP.
//			ELEC. DES. APP.	
HEAT TREAT. SPEC.			CHECKED	FINAL APPROVAL
//			A-489	
FINISH & SPEC. NO.				

ISSUE	ITEM	CHANGED FROM	DATE	CN. NO.	DRAFTS	CHECKER	ENG. APP.

TOLERANCES

SCALE

ALL OTHERS
DEC. DIM. ±
FRAC. DIM. ±
ANGULAR DIM. ±

DRILL, PUNCH, COMMERCIAL STOCK SIZES AND MANUFACTURERS TOLERANCES ARE NOT INCLUDED.

IF IT IS FOUND DESIRABLE TO CHANGE ANY TOLERANCE OR OTHER DETAIL SPECIFIED ON THIS DRAWING NOTIFY THE PURCHASER PROMPTLY.

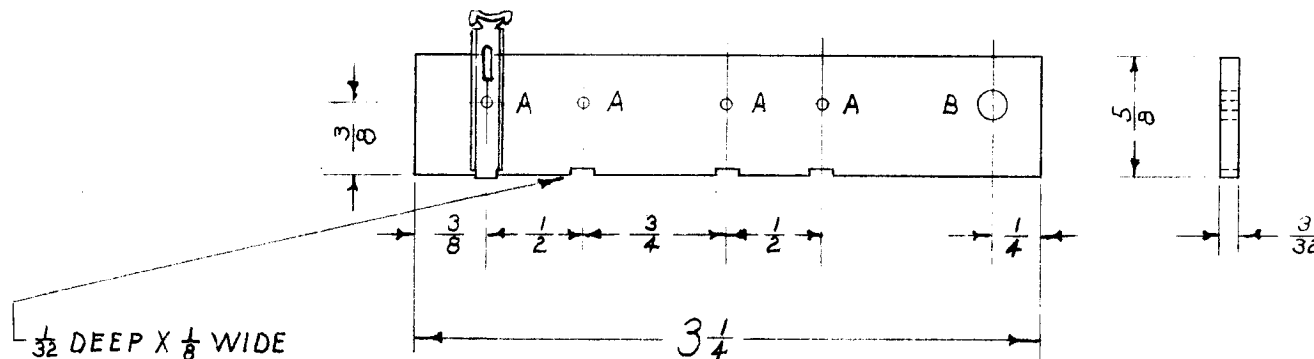
A-491

MAXIMUM ALLOWABLE TOLERANCES HAVE BEEN DETERMINED AND DEVIATIONS WILL BE CAUSE FOR REJECTION. REMOVE ALL BURRS AND SHARP EDGES

USED ON

MODEL	PROJECT NO.	ASS'Y. NO.	DATE
DDR-2D		CA-184	7-20-53

A = #51 DRILL - 4 HOLES
B = #27 DRILL - 1 HOLE



4	3	EY-100-4	EYELET	
4	2	TE-136	FANNING STRIP LUG	
1	1	PX-171	BOARD (NO DRAWING)	
REQ.	ITEM	PART NO.	DESCRIPTION	SYMBOL
3/32" THICK			THE TECHNICAL MATERIEL CORP.	
STOCK SIZE			MAMARONECK, NEW YORK	
PHENOLIC			FANNING STRIP BOARD,	
MATERIAL			ASSEMBLY	
XXX			F. M.	
TYPE & TEMPER			DRAWN	MECH. DES. APP.
HEAT TREAT. SPEC.			CHECKED	FINAL APPROVAL
NATURAL			A-491	
FINISH & SPEC. NO.				

ISSUE	ITEM	CHANGED FROM	DATE	CN. NO.	DRAFTS	CHECKER	ENG. APP.
TOLERANCES			SCALE --- 1/1 ---				
ALL OTHERS	DEC. DIM. ± FRAC. DIM. ± ANGULAR DIM. ±		DRILL, PUNCH, COMMERCIAL STOCK SIZES AND MANUFACTURERS TOLERANCES ARE NOT INCLUDED.				