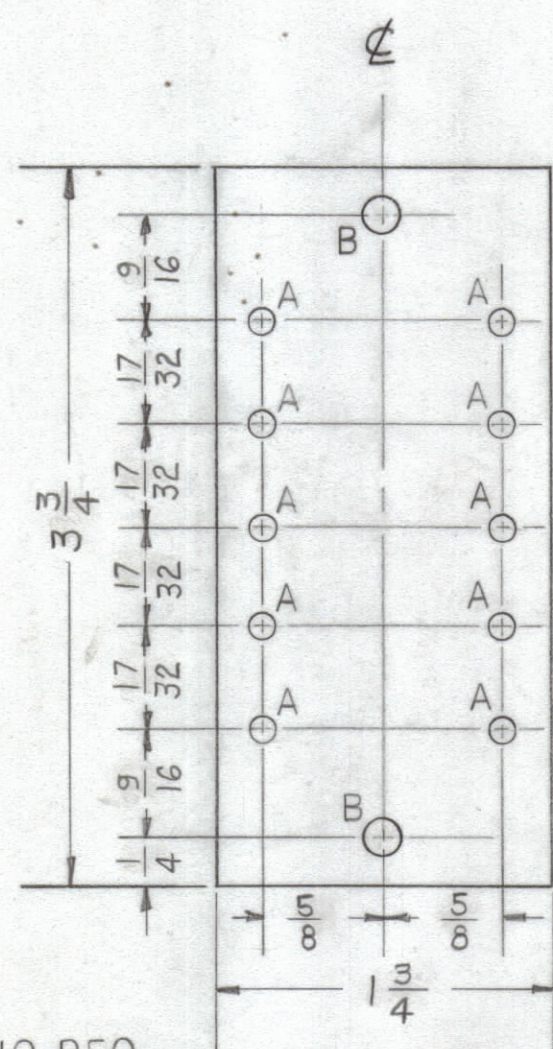
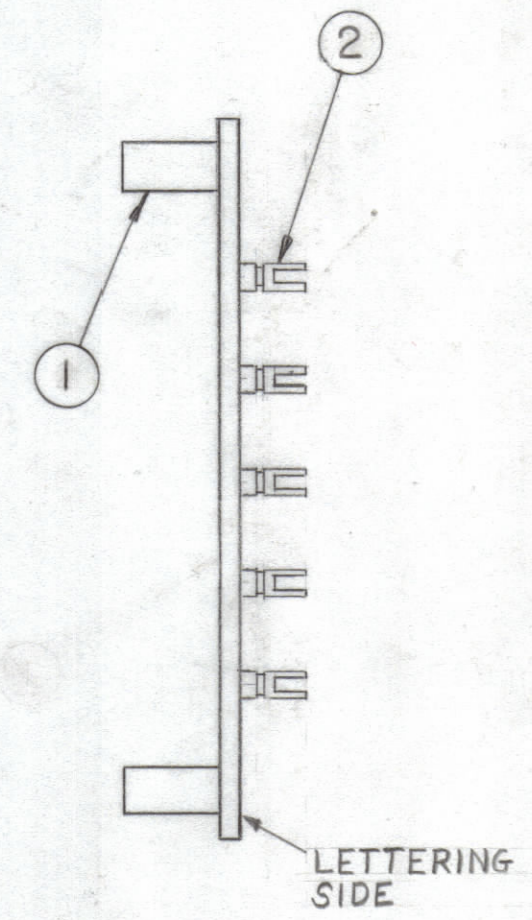


REVISIONS					
ZONE	SYM	DESCRIPTION	DATE	E.M.N. NO.	APPR
Ø		ORIGINAL RELEASE FOR PRODUCTION	5/16/67	Ø	CV

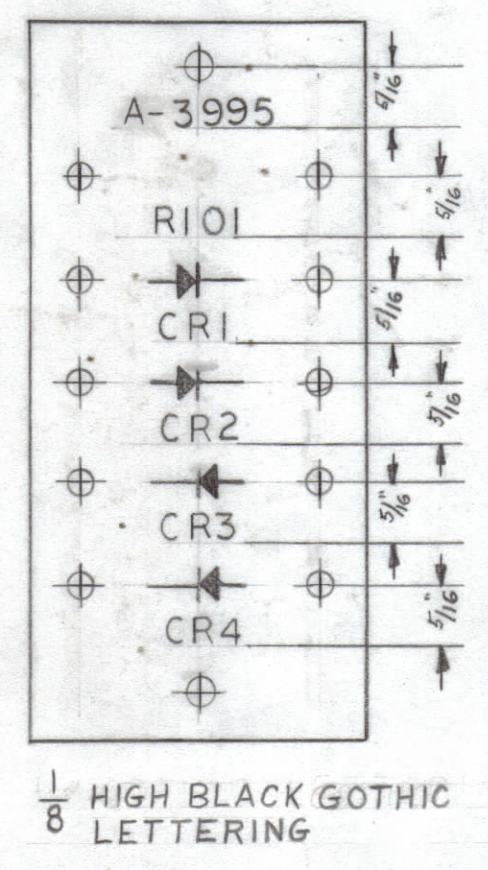


A-.116 DIA. 10 REQ.  
 B-.189 DIA. 2 REQ.  
 MATERIAL:  
 3/32 THICK, EPOXY,  
 G-II NATURAL

A-3995-1

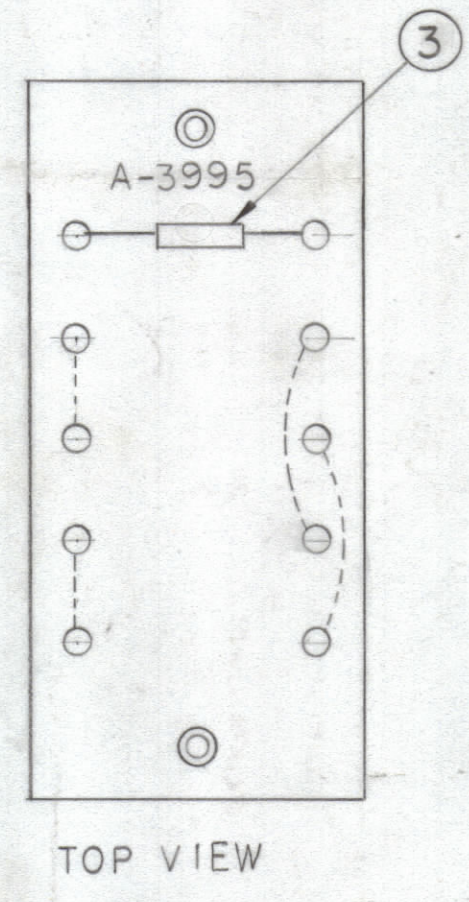


SUB-ASSEMBLY  
 A-3995-3

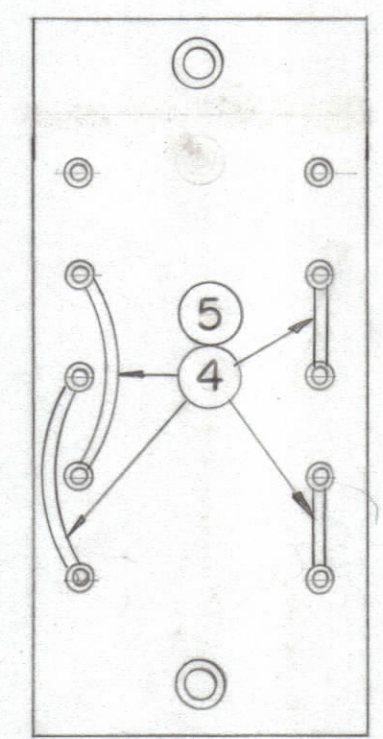


MARKING  
 A-3995-2

A-3995-4  
 FINAL ASSEMBLY



TOP VIEW



BOTTOM VIEW

NOTES

QTY./UNIT	MODEL USED ON	ASS'Y. NO.
1	LSP-6X	A-3999
SCALE	CODE	

THE CONTENTS OF THIS DRAWING ARE THE EXCLUSIVE PROPERTY OF THE TECHNICAL MATERIEL CORP. ITS UNAUTHORIZED USE OR REPRODUCTION IN WHOLE OR IN PART IS STRICTLY FORBIDDEN.

REQ'D.	ITEM	PART NUMBER	DESCRIPTION	SYMBOL
6	BS-100		SOLDER, SOFT	
5	PX104-1-034		INS. SLVG. SZ20	
4	WL100-7		WIRE ELEC - BUSS	
1	3	RC20GF224K	RES. FXD. COMP.	R101
10	2	TE-109-2	TERM. STUD	
2	1	TE-108-16	NUT, PLN. CINCH	

LIST OF MATERIAL			
REQ'D.	ITEM	PART NUMBER	DESCRIPTION
MATERIAL			
FINISH			
THE TECHNICAL MATERIEL CORP. MAMARONECK, NEW YORK			
TITLE DIODE BOARD ASSEMBLY			
DRAWN	BN	DATE	FINAL APPROVAL
CHECKED		DATE	
ELECT. DES.		DATE	A-3995
MECH. DES.		DATE	
SHEET			REV. LTR.

A3995