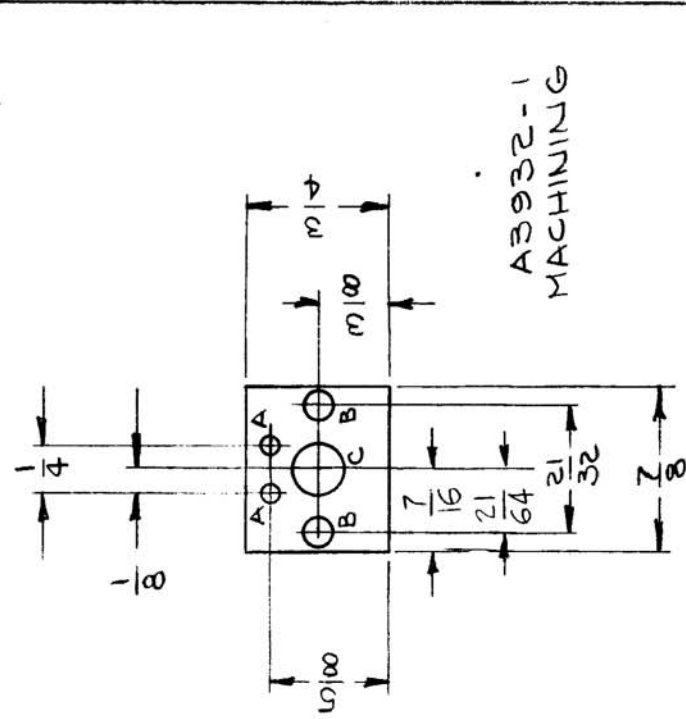


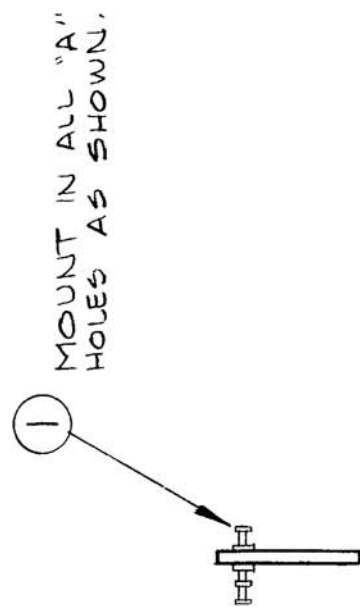
REQ. PER UNIT	MODEL	USED ON
5	VLRB-1	ASSY. NO.
		DATE
		11-12-64

A3932



A3932-1  
MACHINING

- A - .073 DIA. 2 REQ.
- B - 5/32 DIA. 2 REQ.
- C - 1/4 DIA. 1 REQ.



A3932-2  
SUB ASSY

2	1	TE168-4B	TERMINAL, STUD	A
REQ. ITEM	PART NO.	DESCRIPTION	SYMBOL	
	1/16 THK	THE TECHNICAL MATERIEL CORP. MAMARONECK. NEW YORK		
	STOCK SIZE	TERMINAL BOARD, TRANSFORMER		
	LINEX BASE PHENOLIC	2 TERMINALS		
	MATERIAL			
	TYPE & TEMPER	DRAWN	CHECKED	FINAL APPROVAL
	HEAT TREAT. SPEC.			
	NATURAL			
	FINISH & SPEC. NO.	ELEC. DES. APP.	MECH. DES. APP.	
				A3932

ORIGINAL RELEASE FOR PRODUCTION  
 X1 MATERI 45 BAKELITE  
 X EXPR. RELEASE  
 SYM DESCRIPTION DATE CH. NO. DRAFTS CHECKER ENG. APP.  
 4/9/65  
 12-22-64  
 1/12/69 X  
 SCALE 1:1  
 CODE A  
 UNLESS OTHERWISE SPECIFIED DIMENSIONS ARE IN INCHES AND INCLUDE CHEMICALLY APPLIED OR PLATED FINISHES  
 TOLERANCES DECIMALS FRACTIONS  
 .X ± .05 ± 1/64  
 .XX ± .01 ANGLES  
 .XXX ± .005 ± 0° 30'