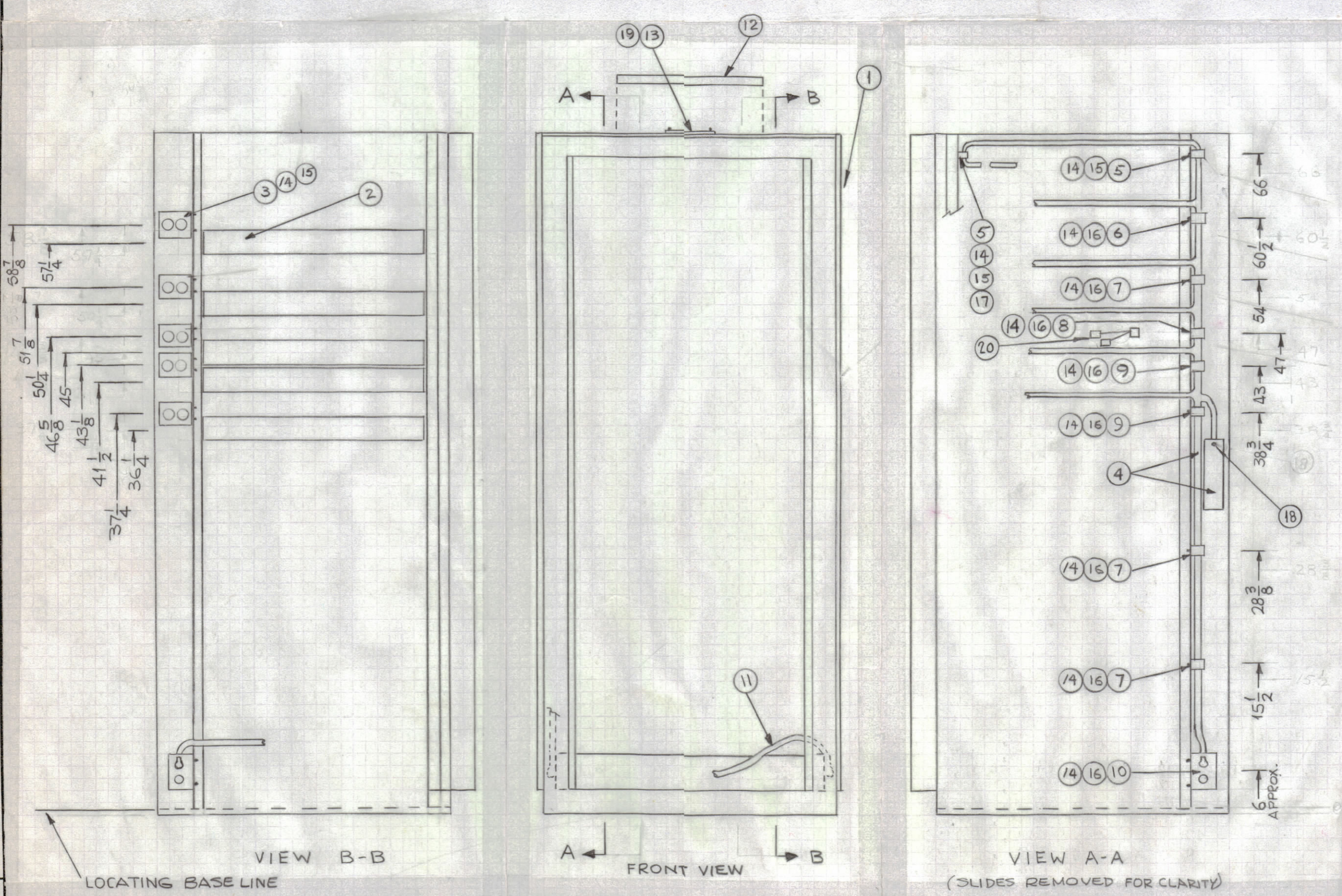


REVISIONS						
ZONE	SYM	DESCRIPTION	DATE	E.M.N. NO.	DRAFT	CHKD APPD
X		EXP. RELEASE	10-1-64	X	SLC	
Ø		ORIGINAL RELEASE FOR PRODUCTION	10-20-64	Ø	Ø	
A		ON B/M IT. 1 WAS A3885	11-19-64	12954	Z.F.	W. B. 100
B		CHGD. IT. 4 & 19; ADD. IT. 20 & 21; UPDATED TITLES & DESCRIPTION	2-1-65	13391	HLA	
C		ITEM 4 PT/NO WAS A3840. ITEM 4 DESC WAS WIRING HARNESS/CHASSIS	12-16-66	17510	WTD	

ITEM NO.	USED TO MOUNT	QTY	
14	3	10	
	5	2	
	6	1	
	7	3	
	8	1	
	9	2	
	10	4	
	15	3	10
		5	2
		6	1
16	7	3	
	8	1	
	9	2	
17	10	4	
	5	1	
18	4	2	
19	13	4	



REQ'D.	ITEM	PART NUMBER	DESCRIPTION	SYMBOL
1	21	PX871-7	WIRING DIAGRAM, LAM	
1	20	CA864	CABLE ASSY, RF	
4	19	SFP0256SN3	SCREW, TAPPING, THREAD CUTTING	
2	18	SCBP0632BN6	SCREW, MACHINE	
1	17	NTH1032BN12	NUT, PLAIN, HEX	
11	16	SCBP1032BN5	SCREW, MACHINE	
12	15	SCBP1032BN7	SCREW, MACHINE	
23	14	LWE10MRN	WASHER, LOCK, EXTERNAL	
1	13	NP103-42	PLATE, IDENTIFICATION	
1	12	AD103-5	FILTER, AIR CONDITIONING	
1	11	CA795-5	CABLE ASSEMBLY, POWER, 3/C	
1	10	A3730	FILTER ASSEMBLY	
2	9	CU131-9	CLAMP, LOOP, CUSHION-1-1/4D	
1	8	CU131-8	CLAMP, LOOP, CUSHION-1-1/16D	
3	7	CU131-7	CLAMP, LOOP, CUSHION-7/8D	
1	6	CU131-6	CLAMP, LOOP, CUSHION-3/4D	
2	5	CU102-3	CLAMP, LOOP-1/4D	
1	4	A4308	ASSY, OUTPUT CHASSIS	
5	3	A3517	RETRACTOR ASSEMBLY	
5	2	TK115-18	TRACK, SET, TILT LOCK	
1	1	MS4026	CABINET, ELECTRICAL EQUIPMENT	

STURMER LIST OF MATERIAL				
MATERIAL	THE TECHNICAL MATERIEL CORP. MAMARONECK, NEW YORK			
FINISH	TITLE RAK-44, FINAL ASSY.			
UNLESS OTHERWISE SPECIFIED DIMENSIONS ARE IN INCHES AND INCLUDE CHEMICALLY APPLIED OR PLATED FINISHES		DRAWN	DATE	FINAL APPROVAL
DECIMALS .X ± .05 .XX ± .01 .XXX ± .005		SPC	10-1-64	KAC
FRACTIONS ± 1/64 ANGLES ± 0° 30'		CHECKED	DATE	DATE
TOLERANCES		Ø	10-20-64	
		ELECT. DES.	DATE	
		MECH. DES.	DATE	
			10-20-64	
			SHEET	

NOTE: ALL DIMENSIONS TO CENTER LINE OF ITEMS BEING MOUNTED.

1	RAK-44 LRRA-1	
QTY./UNIT	MODEL USED ON	ASSY. NO.
SCALE	CODE	

NOTES

THE CONTENTS OF THIS DRAWING ARE THE EXCLUSIVE PROPERTY OF THE TECHNICAL MATERIEL CORP. ITS UNAUTHORIZED USE OR REPRODUCTION IN WHOLE OR IN PART IS STRICTLY FORBIDDEN.

DATE	DATE	DATE	DATE
10-1-64	10-20-64	10-20-64	10-20-64

A3867